



Set on a mature and generous site of approximately 0.75 of an acre this delightful family home enjoys panoramic views in all directions, yet remains only a few miles from Hillsborough village centre with the A1 also very convenient making Belfast, Lisburn and further south very easily accessible.

The property presents a light and bright feel throughout featuring two formal reception rooms and access to the garden. The kitchen is in keeping with the setting and open plan to a casual living area. On the first floor are four generous bedrooms, master with en suite shower room complimenting the family bathroom and ground floor wc. Externally there are generous gardens and integral garage.

Early viewing is encouraged to appreciate the setting, with views as far as Slieve Gullion in the south and 'Napoleon's Nose' & Cavehill to the north.

Offers Over
£499,950

17 Edentrillick Hill,
Hillsborough,
BT26 6PQ

Viewing by
appointment with
& through agent
028 9266 1700

- Architecturally Designed Contemporary Residence with Stunning Views Across the Lagan Valley
- Impressively proportioned Reception Hall with Feature Brick Fireplace and Dining Area
- Formal Lounge with Feature Pine Fireplace
- Family Living Room with Feature Brick Fireplace
- Magnificent Luxury Kitchen finished with Solid Granite Work Surfaces
- Master Bedroom Suite featuring walk-in Wardrobe and Ensuite Shower Room
- Three Additional Double Bedrooms
- Separate Utility/Laundry Room leading to rear garden and integral plaster finish centrally heated garage area (ideal for further accommodation if required, subject to statutory regulations)
- Exceptional Attention to Detail Evident throughout with Many Unique Design Features including Solid Light Pine Internal Doors, Architraves and Fittings
- Contemporary Aluminium Powder Coated Double Glazed Windows
- Oil Fired Central Heating (Replaced in Recent Years with the Addition of Condensing Boiler)
- Well-Proportioned Integral Garage
- Landscaped surrounding gardens. Extensive Parking, Turning area. Functional Storage Area and Superb Patio Area that are Sheltered to the Rear
- Just minutes from Sprucefield, Lisburn and amenities. Easy Commuting Distance from Belfast via M1 Motorway

The Property Comprises:

Ground Floor

PORCH: Composite door, door though to reception hall.



RECEPTION HALL: Feature brick fireplace, brick inlay, granite hearth, gas fired stove.



LOUNGE: 14' 11" x 14' 4" (4.54m x 4.37m) Feature fireplace, cast iron inlay, ceramic tiled detailing, tiled slate hearth, gas fire.

WC: Low flush wc, pedestal wash hand basin, access to garage.

STUDY: 5' 11" x 6' 6" (1.80m x 1.97m)



FAMILY ROOM: 15' 6" x 14' 4" (4.72m x 4.38m) Feature brick fireplace, timber mantle, tiled hearth and open fire, doors out to patio.



KITCHEN: 15' 5" x 14' 3" (4.70m x 4.35m) Granite worktop, built in dishwasher and fridge, 1 1/2 stainless steel sink unit, mixer tap, part tiled walls, ceramic tiled floor, AEG double electric oven, stainless steel splash back, stainless steel extractor with glass pelmet, 4 ring ceramic hob, spot lighting and door through to....



UTILITY: Continuation of ceramic tiled floor, matching high and low level units to kitchen with stainless steel sink, mixer tap, plumbed for washing machine, ceramic tiled splashbacks, door out to rear garden/patio.



First Floor

LANDING: Vaulted ceiling, velux in roof, feature brick chimney, access into eave storage, hot press off.



BEDROOM (1): 25' 3" x 15' 7"
(7.70m x 4.74m) Velux in roof, spotlighting, dressing area, walk in robe with access to roofspace.



ENSUITE SHOWER ROOM: Ceramic tiled floor, floor to ceiling tiling, low flush wc, pedestal wash hand basin, mixer tap, large fully tiled shower cubicle with Aqualisa power shower, spots and extractor fan.



BEDROOM (2): 13' 7" x 12' 3" (4.14m x 3.73m) (at widest points) Velux in roof, spot lights.

BEDROOM (3): 12' 3" x 9' 9" (3.73m x 2.96m) Velux in roof, spot lights.



BEDROOM (4): 10' 5" x 11' 5" (3.18m x 3.47m)



BATHROOM: White bathroom suite comprising of low flush wc, pedestal wash hand basin with mixer tap, panelled bath with telephone hand shower attachment over, spots and extractor fan, velux window.



Outside

Pillared tarmac driveway leads to a sweeping gravel driveway with ample parking for multiple vehicles and access to integral garage.

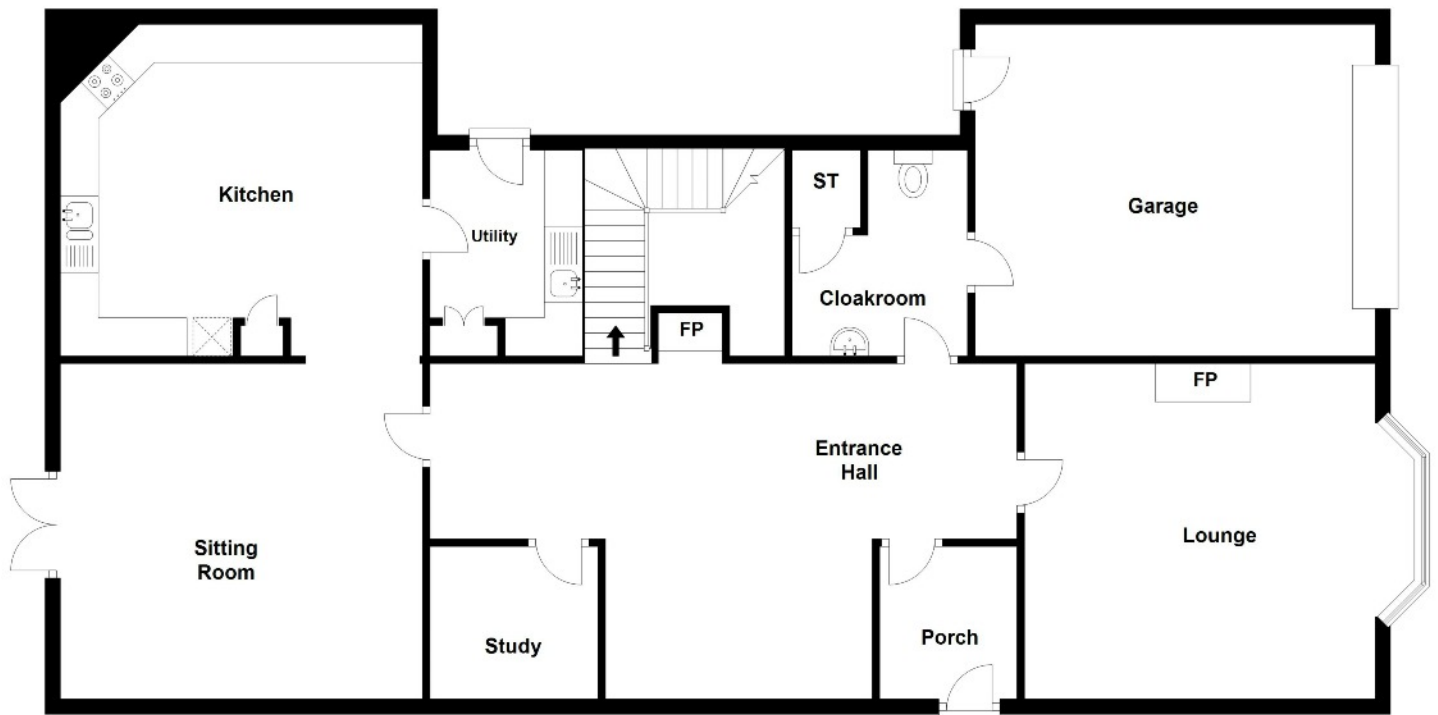
Front gardens laid in lawn with feature specimen trees and shrub beds

Rear sheltered flagged patio area in front of generous rear lawn. The site is fully bordered by mature hedging on all sides.

GARAGE: 17' 1" x 14' 2" (5.20m x 4.33m) Automated sectioned, insulated door with remote fob access, oil boiler, door to patio.

Ground Floor

Approx. 144.4 sq. metres (1554.2 sq. feet)

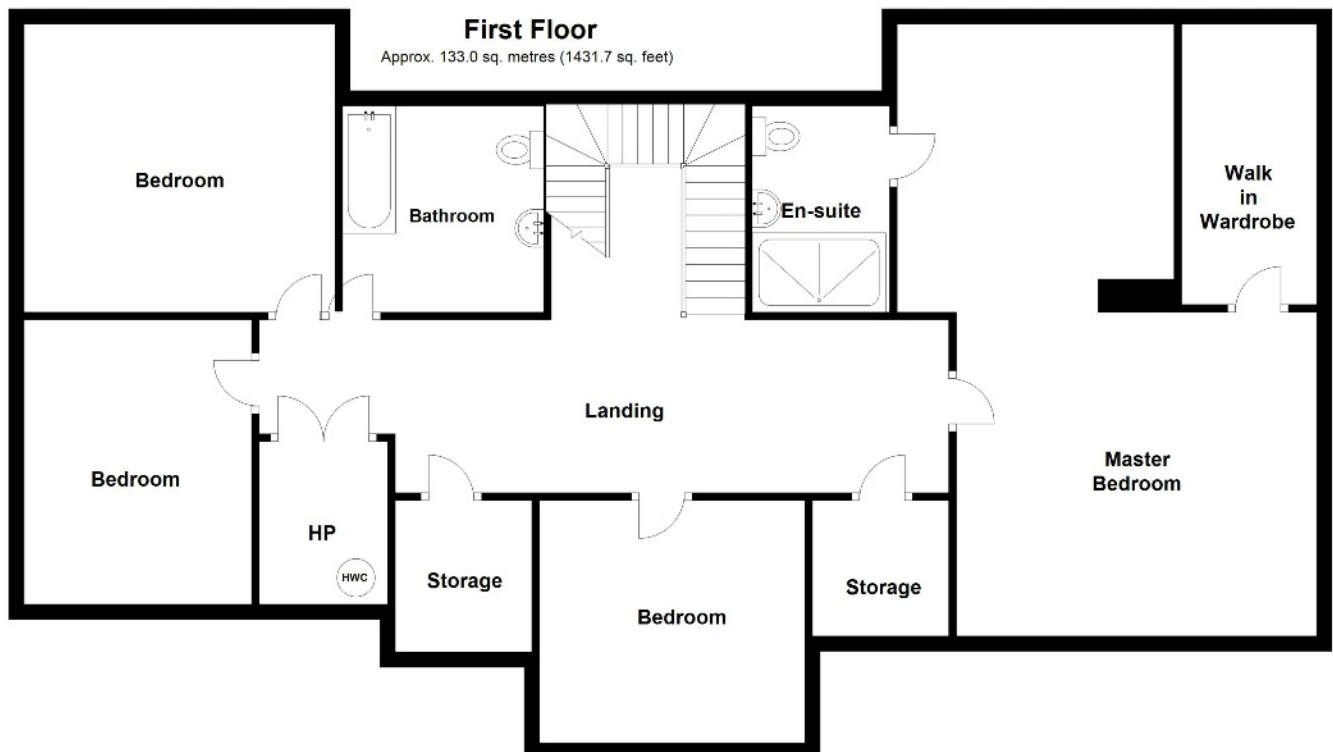


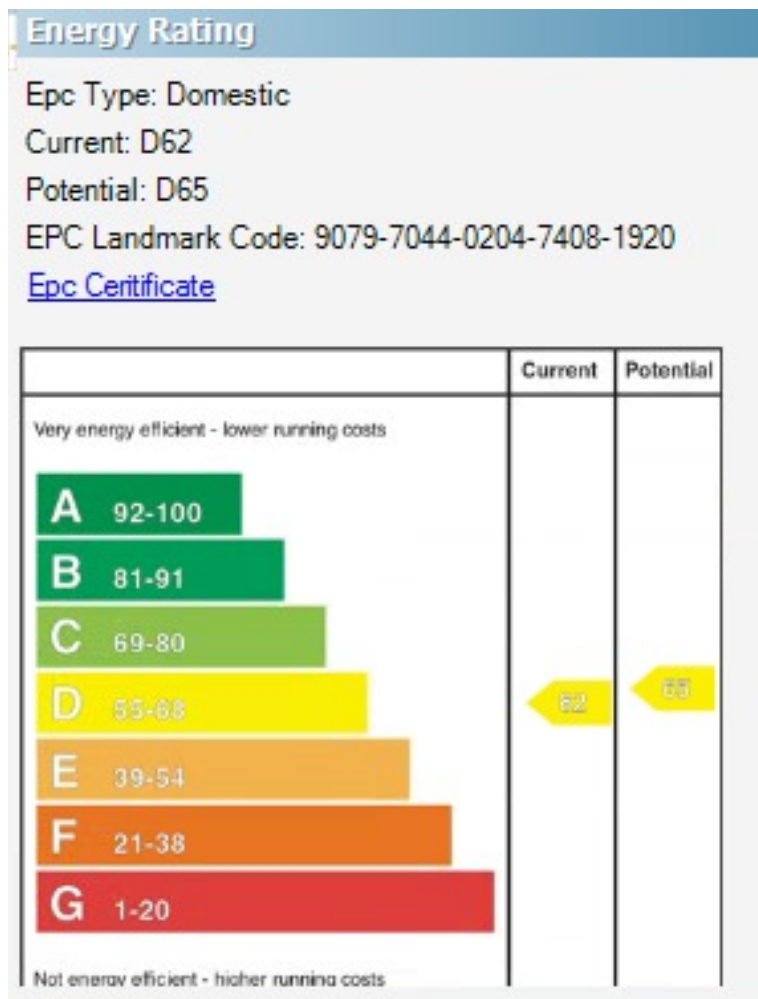
Total area: approx. 277.4 sq. metres (2985.9 sq. feet)

This plan is for illustrative purposes only.
Plan produced using PlanUp.

First Floor

Approx. 133.0 sq. metres (1431.7 sq. feet)





Location:

From Hillsborough roundabout take the dual carriageway, turn left at the second exit (Dromara sign post)

After 25 yards turn right at the T-Junction along the Dromore Road and take the first left into Edentrillick Road.

Continue out Edentrillick Road for just over 1 mile and turn left into Edentrillick Hill.

Lisburn - 028 92 66 1700
Ballyhackamore - 028 90 65 0000
Lisburn Road - 028 90 66 3030
North Down - 028 90 42 4747

www.templetonrobinson.com



With You
Every Step
of the Way

These particulars do not constitute any part of an offer or contract. None of the statements contained in these particulars are to be relied on as statements or representations of fact and intending purchasers must satisfy themselves by inspection or otherwise to the correctness of each of the statements contained in these particulars. The Vendor does not make or give, neither Templeton Robinson, nor any person in its employment has any authority to make or give, any representation or warranty whatever in relation to this property. All dimensions are taken to nearest 3 inches.