



An exceptional modern semi-detached home situated in a now well established quiet location, just minutes walk and drive to a wide range of local amenities and leading schools.

This three bedroom (master ensuite) property provides excellent accommodation and is finished to an exceptionally high standard throughout.

Rarely does an opportunity come up to purchase a property within Penworth Green, the condition and location is sure to have broad appeal.

Early viewing is recommended.

Offers Around  
£205,000

18 Penworth Green,  
LISBURN,  
BT28 3WW

---

Viewing by  
appointment with  
& through agent  
028 9266 1700



- Extremely Well Presented Semi-Detached Family Home in a Modern Development
- Generous Lounge with Feature Sandstone Fireplace & Open Fire
- Modern Fitted Kitchen with Full Range of Appliances Open to Dining Area, Through to Rear Sun Room
- Ground Floor WC
- 3 Well Proportioned Bedrooms Including Master with Ensuite
- Oil Fired Central Heating
- uPVC Double Glazed Windows
- Finished to a High Standard Throughout
- Driveway Parking for Several Cars
- Private Rear Garden with Low Maintenance Pavior Patio Area, Lawn and Shed for Storage
- Convenient to a Range of Local Amenities & Leading Schools
- Comfortable Commuting Distance to Belfast and Further Parts of the Province
- Early Viewing is Highly Recommended



The Property Comprises:

Ground Floor

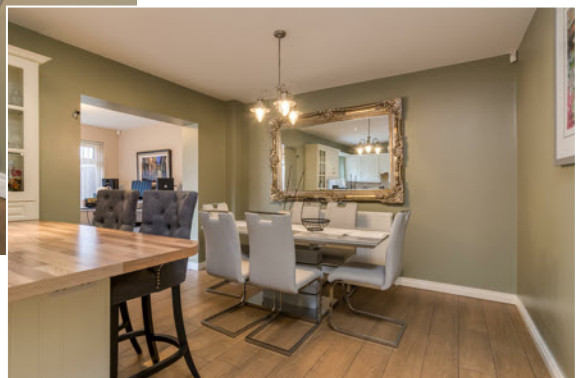
ENTRANCE HALL: PVC front door with glazed side panels.

DOWNSTAIRS W.C.: Low flush WC, wash hand basin.

LOUNGE: 11' 1" x 19' 6" (3.38m awp x 5.94m) Feature sandstone fireplace with open fire.



KITCHEN/DINING: 11' 11" x 18' 6" (3.62m x 5.64m) Modern fitted kitchen with built-in fridge/freezer, dishwasher and washing machine, open to dining area, ceramic tiled wood effect flooring.





SUN ROOM: 10' 4" x 11' 5" (3.14m x 3.47m) Continuation of ceramic tiled wood effect flooring, door to rear garden.



First Floor  
LANDING;



Telephone 028 9266 1700  
[www.templetonrobinson.com](http://www.templetonrobinson.com)

MASTER BEDROOM: 11' 2" x 12' 11" (3.41m x 3.93m)

ENSUITE SHOWER ROOM: Low flush WC, wash hand basin, shower cubicle, ceramic tiled floor, spotlighting.



BEDROOM (2): 12' 0" x 9' 1" (3.66m x 2.76m)



BEDROOM (3): 11' 12" x 9' 1" (3.65m x 2.77m)





BATHROOM: Panel bath with shower over, spotlighting, low flush WC, wash hand basin, hotpress, ceramic tiled floor.



## Outside

Private rear garden with low maintenance paved patio area and lawn.



Telephone 028 9266 1700

[www.templetonrobinson.com](http://www.templetonrobinson.com)

## Location:

From Prince William Road turn onto Ballymacash Road which becomes the Glenavy Road and Penworth Green is on the right hand side.

Lisburn - 028 92 66 1700

Ballyhackamore - 028 90 65 0000

Lisburn Road - 028 90 66 3030

North Down - 028 90 42 4747

[www.templetonrobinson.com](http://www.templetonrobinson.com)

These particulars do not constitute any part of an offer or contract. None of the statements contained in these particulars are to be relied on as statements or representations of fact and intending purchasers must satisfy themselves by inspection or otherwise to the correctness of each of the statements contained in these particulars. The Vendor does not make or give, neither Templeton Robinson, nor any person in its employment has any authority to make or give, any representation or warranty whatever in relation to this property. All dimensions are taken to nearest 3 inches.

