

CRAWFORDSBURN VILLAGE BROW

Crawfordsburn



SITES 38-39

Computer visual.

SITES 38 - 39

LOWER GROUND FLOOR

Living / Dining	16'7" x 12'11"
Kitchen	13'8" x 9'6"
Utility	9'9" x 5'11"
WC	6'7" x 5'11"

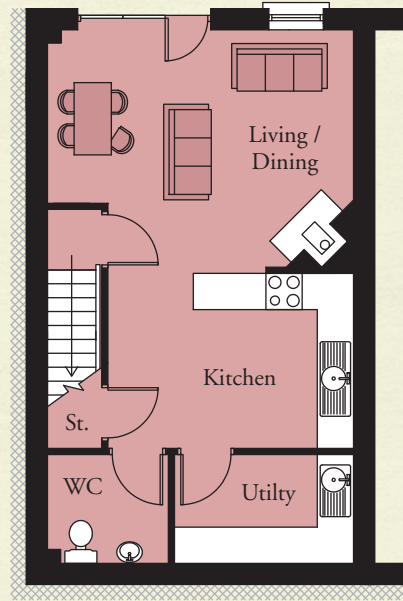
GROUND FLOOR

Entrance Hall	
Lounge	16'7" x 12'11"
Master Bedroom	11'6" x 9'9"
Ensuite	7'1" x 3'11"

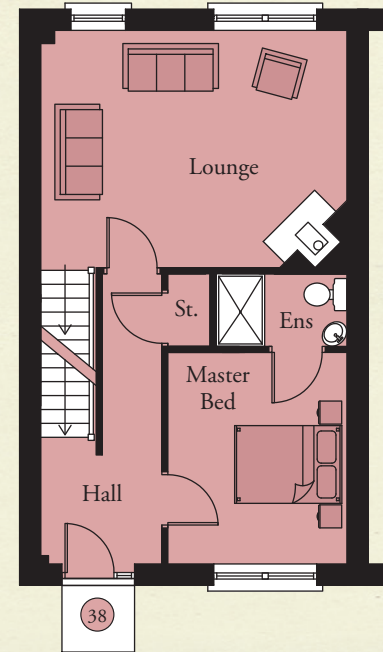
FIRST FLOOR

Bedroom 2	10'0" x 9'2"
Bedroom 3	10'0" x 10'4"
Bathroom	7'10" x 8'5"

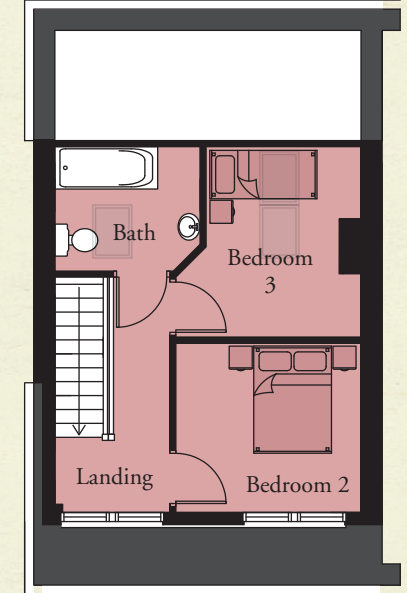
LOWER GROUND FLOOR



GROUND FLOOR

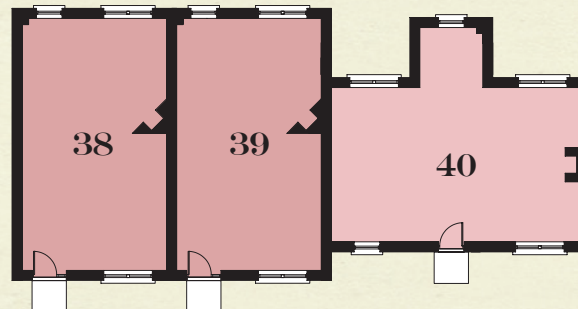


FIRST FLOOR



**TOTAL FLOOR AREA:
1270 SQ. FT. APPROX.**

KEY - SITES 38, 39 & 40



**TEMPLETON
ROBINSON**

NORTH DOWN
54 High Street
Holywood
Co Down
BT18 9AE

028 9042 4747

WWW.TEMPLETONROBINSON.COM

CGI computer visual is for illustrative purposes only. Floorplans are not to scale and all measurements are approximate.



**CRAWFORDSBURN
VILLAGE BROW**