



The Crescent has long been regarded as one of Hollywood's best kept secrets. This private, gated community is located with minutes walking distance of Hollywood town centre and dates back to the 1800's.

This end terrace house lets the purchasers buy a bit of history as the property still holds onto many of its original features which include high ceiling cornices and intricate ceiling roses.

Although the property requires a degree of modernisation, it is perfect for a property developer or someone who wants to turn this gem into their dream home, in one of Hollywood's most sought after addresses.

Offers Around
£399,950

1 The Crescent,
Hollywood,
BT18 9AY

Viewing by
appointment with
& through agent
028 9042 4747

- Listed Period Terrace House in Hollywood town centre (Grade 2 Listed) - With Period Features
- Secure Gated Entrance with ample Parking
- 5 Well Proportioned Bedrooms
- 3 Spacious Reception Rooms
- Kitchen / Dining Area
- Oil Fired Central Heating
- Private Enclosed Rear Patio / Concrete Fuel Store
- Garden Area to Rear
- Single Garage off property with shared block





The Property Comprises:

Entrance

ENCLOSED ENTRANCE PORCH: Enclosed tiled entrance porch, leaded stained glass top light and matching side lights.

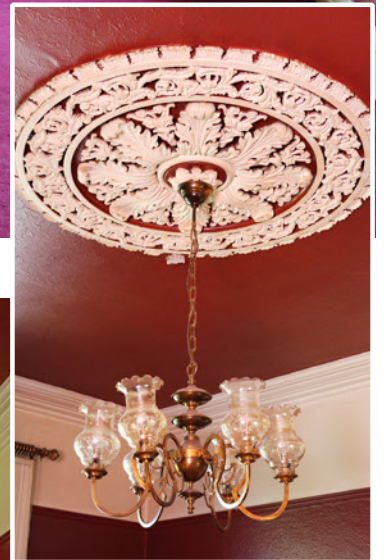
Ground Floor

ENTRANCE HALL: Cornice ceiling.

CLOAKROOM WC: Low flush wc, wash hand basin, Terracotta tiles.



DRAWING ROOM: 16' 7" x 14' 10" (5.05m x 4.52m) Fireplace with cast iron grate, open fire, cornice ceiling, ceiling rose.



Double doors to . . .

DINING ROOM: 15' 0" x 10' 5" (4.57m x 3.18m) (At widest points) - Cornice ceiling, ceiling rose.

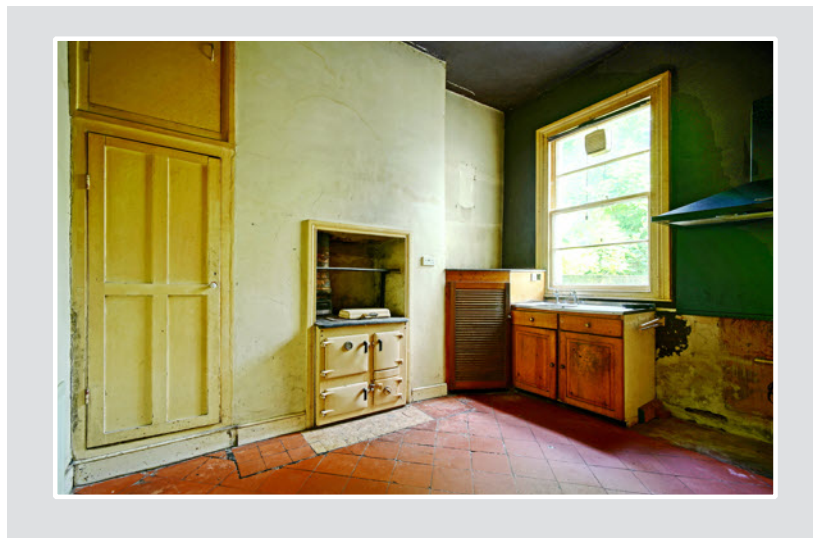


LIVING ROOM: 13' 9" x 13' 0" (4.19m x 3.96m) Fireplace with open fire, cornice ceiling.



KITCHEN: 13' 0" x 12' 1" (3.96m x 3.68m) Range of built-in units, stainless steel single drainer sink unit, built-in oven/hob plus solid fuel Rayburn Range, recess for cooking range, Terracotta tiled floor.





UTILITY ROOM: 12' 7" x 6' 8" (3.84m x 2.03m) Belfast sink, plumbed for washing machine.

WORKROOM / BOILER ROOM: 9' 10" x 7' 8" (3.00m x 2.34m) Oil fired central heating boiler, lagged copper cylinder, Terracotta tiled floor.



First Floor Return

BATHROOM: White suite comprising sink, panelled bath, pedestal wash hand basin, low flush wc.

BEDROOM (5): 12' 6" x 6' 6" (3.81m x 1.98m)





First Floor

BEDROOM (1): 19' 10" x 13' 8" (6.05m x 4.17m) Cast iron fireplace with tiled inset, hearth, cornice ceiling



BEDROOM (2): 16' 0" x 14' 9" (4.88m x 4.5m) Cornice ceiling.

BEDROOM (3): 13' 0" x 12' 10" (3.96m x 3.91m) Cast iron fireplace, cornice ceiling.

BEDROOM (4): 15' 0" x 10' 4" (4.57m x 3.15m) Cornice ceiling.



Outside

Enclosed private walled garden.

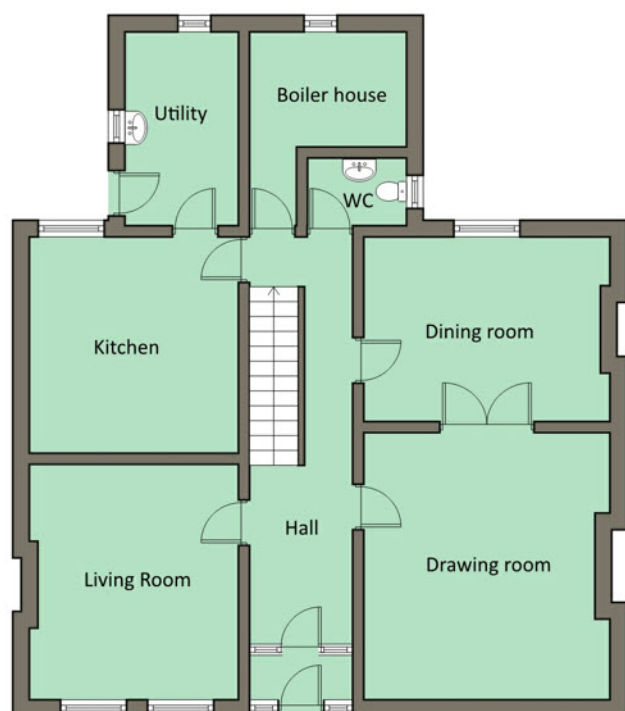
Garden store.

SINGLE GARAGE: 16' 3" x 9' 10" (4.95m x 3.00m)





Floor Plans



Ground Floor



First Floor



Location:

Entrance is opposite The Priory, off High Street.



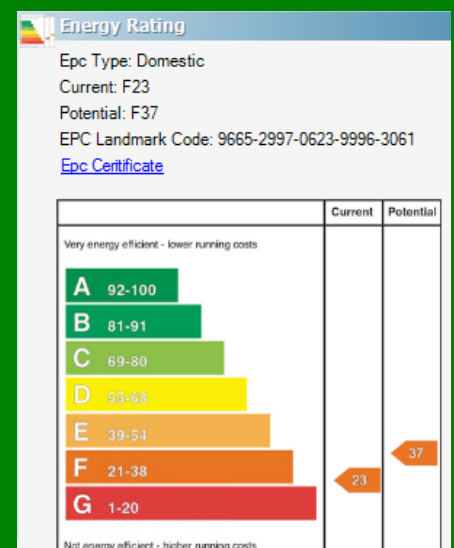
Belfast Branches

Lisburn Road - 028 90 66 3030
Ballyhackamore - 028 90 65 0000

Other Branches

Bangor - 028 91 45 1166
Holywood - 028 90 42 4747
Lisburn - 028 92 66 1700

www.templetonrobinson.com



With You Every Step of the Way

These particulars do not constitute any part of an offer or contract. None of the statements contained in these particulars are to be relied on as statements or representations of fact and intending purchasers must satisfy themselves by inspection or otherwise to the correctness of each of the statements contained in these particulars. The Vendor does not make or give, neither Templeton Robinson, nor any person in its employment has any authority to make or give, any representation or warranty whatever in relation to this property. All dimensions are taken to nearest 3 inches.