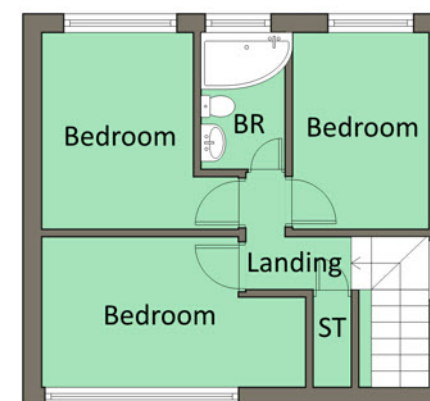
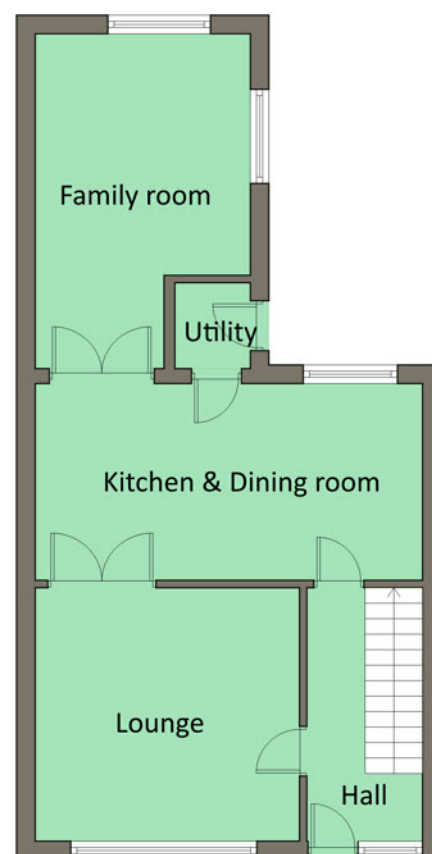




TEMPLETON
ROBINSON

TEMPLETON
ROBINSON



This most attractive extended semi detached chalet bungalow enjoys a delightful position within this much sought after and highly regarded area of Bangor West. The property is situated within close proximity to leading schools, local amenities and within commuting distance to Belfast and Bangor.

Internally the accommodation is both bright and extremely spacious offering a good sized lounge, kitchen open plan to dining room/family room enjoying direct access to the garden and on the first floor three bedrooms and bathroom. Externally the property enjoys a private garden in paving and shrubs etc which is ideal for low maintenance living.

Recent sales in this locality have proved successful, therefore early viewing is strongly advised.

Offers Around
£157,500

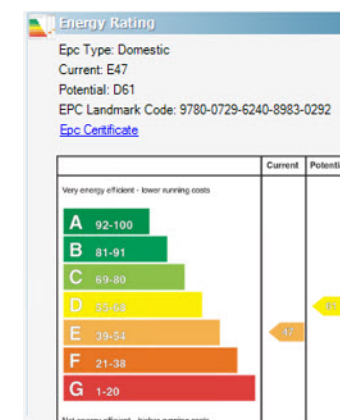
27 Lynne Road,
Bangor,
BT19 1PE

Viewing by
appointment with
& through agent
028 9042 4747

North Down - 028 90 42 4747
Lisburn Road - 028 90 66 3030
Ballyhackamore - 028 90 65 0000
Lisburn - 028 92 66 1700
www.templetonrobinson.com



These particulars do not constitute any part of an offer or contract. None of the statements contained in these particulars are to be relied on as statements or representations of fact and intending purchasers must satisfy themselves by inspection or otherwise to the correctness of each of the statements contained in these particulars. The Vendor does not make or give, neither Templeton Robinson, nor any person in its employment has any authority to make or give, any representation or warranty whatever in relation to this property. All dimensions are taken to nearest 3 inches.



Telegraph
PROPERTY
AWARDS 2019
In partnership with

WINNER
Residential Estate Agency (Multi Branch) of the year 2019

27 Lynne Road,
Bangor,
BT19 1PE

Property Features

Extended Semi Detached Villa

Well Presented Throughout

Spacious Living Room & Family Room

Kitchen open plan to Dining Room

Three Well Proportioned Bedrooms

White Bathroom Suite

Upvc Double Glazed Windows

Oil Fired Central Heating

Attached Garage, additional pebbled driveway

Front & Enclosed Rear Garden

Superb Bangor West Location



Location:

From Old Belfast Road turn into Rathmore Road and Lynne Road is 1st on left.

Property Comprises

Ground Floor

uPVC front door.

ENTRANCE HALL: Cloaks area.

LIVING ROOM: 14' 4" x 13' 7" (4.37m x 4.14m) Hole in wall fireplace

with tiled hearth, solid oak floor, cornice ceiling.

KITCHEN / DINING: 20' 6" x 10' 3" (6.25m x 3.12m) Fully fitted

kitchen with excellent range of high and low level units, laminate work

surfaces, 1.5 stainless steel sink unit with mixer taps, electric cooker

point, glazed display cabinet, plumbed for dishwasher, built-in wine

rack, part tiled walls. Glazed double doors to...

FAMILY ROOM: 18' 1" x 11' 4" (5.51m x 3.45m)

REAR PORCH: Door to outside.

First Floor

BEDROOM (1): 14' 1" x 9' 6" (4.29m x 2.9m)

BEDROOM (2): 10' 7" x 10' 4" (3.23m x 3.15m)

BEDROOM (3): 10' 6" x 6' 8" (3.2m x 2.03m)

BATHROOM: White suite comprising corner bath with mixer taps,

Mira Sport electric shower, vanity uinit, ceramic tiled floor, extractor

fan. Hotpress with built-in shelving.

GARAGE: 23' 2" x 10' 3" (7.06m x 3.12m) Roller shutter door.

Oil fired boiler.

