



Enjoying a private, generous site, situated on the leafy prestigious Circular Road in East Belfast, this beautiful semi-detached home has been modernised and maintained over the past number of years by its current owners, giving little to do but move in.

Extending to circa 2,500 sq ft with spacious ground floor living, with a layout designed specifically for the growing modern family, whilst on the first and second floors offer bright well proportioned, good sized bedrooms; two of which have an adjoining ensuite shower room, while the master bedroom incorporates both an ensuite bathroom and dressing room; a further double bedroom and family bathroom provide excellent accommodation.

Within an exclusive gated development that offers low maintenance and maximum convenience with its close proximity to George Best City Airport, the outer ring and the Sydenham bypass. The popular restaurants of Ballyhackamore, Belmont Road and shops are close to hand while CIYMS sports club and Belmont Park are within walking distance.

**Offers Over
£525,000**

2B Wilshire Drive,
Circular Road,
BELFAST,
BT4 2GP

Viewing by
appointment with
& through agent
028 9065 0000



- Superb, semi-detached home extending to Circa: 2,500 sq ft
- Private development of 4 houses
- Four double bedrooms, over two floors, Jack & Jill ensuite on top floor
- Principal bedroom with large dressing room and ensuite
- Living room into bay window & feature fireplace
- Downstairs W.C.
- Modern fitted kitchen with appliances & breakfast bar, open to:
- Living & dining areas, double doors to rear garden
- Family bathroom on first floor
- Two large landings which can include study/working areas
- Enclosed westerly facing garden
- Garage / Parking for up to 3 vehicles
- GFCH / double glazing throughout
- Close to excellent schools for all ages
- Belmont, Ballyhackamore village, Hollywood and City Airport all within close vicinity

The Property Comprises:

Wooden front door to...

Ground Floor

ENTRANCE HALL: Wood effect flooring.



LIVING ROOM: 15' 5" x 12' 8" (4.7m x 3.85m) Into Bay. Cornice ceiling, cast iron fireplace with marble hearth.



Telephone 028 9065 0000
www.templetonrobinson.com

DOWNSTAIRS W.C.: White suite comprising wall hung WC, vanity unit with ceramic sink and mixer tap, splashback, wood effect flooring.



KITCHEN/LIVING/DINING 19' 3" x 24' 4" (5.86m x 7.41m) Modern fully fitted kitchen with range of high and low level units, wooden worksurface, 1.5 stainless steel sink unit with mixer tap, integrated oven and microwave, 4 ring gas hob, extractor, integrated fridge/freezer, integrated dish washer, breakfast bar, tiled splashback, plinth lighting, wood effect flooring, open plan to...
LIVING AREA Cornice ceiling, wood effect flooring, double doors to rear.



First Floor

LANDING: Cornice ceiling, study space.

PRIMARY BEDROOM 12' 6" x 23' 4" (3.8m x 7.10m) Into Bay. Cornice ceiling, door to...

DRESSING ROOM/ENSUITE 12' 4" x 11' 9" (3.76m x 3.57m) Access to roofspace, door to...

ENSUITE White suite comprising low flush WC, Jack and Jill sink unit, wall mounted mirror, Bath with mixer taps, shower cubicle with thermostatic shower, tiled walls, tiled floor, spotlights.



BEDROOM (2): 15' 1" x 12' 6" (4.6m x 3.81m) Cornice ceiling.



BATHROOM: White suite comprising low flush WC, pedestal wash hand basin with mixer tap, claw foot bath with mixer tap, shower cubicle with thermostatic shower, part wood panelled walls, cornice ceiling, tiled flooring, spotlights.



Second Floor

LANDING: Access to roofspace, study area, large storage cupboard.

BEDROOM (3): 12' 6" x 12' 2" (3.82m x 3.71m) Door to shower room.



SHOWER ROOM: White suite comprising low flush WC, pedestal wash hand basin with mixer tap, shower cubicle with thermostatic shower, tiled floor, spotlights.

BEDROOM (4): 13' 4" x 12' 6" (4.07m x 3.81m) Door to shower room.



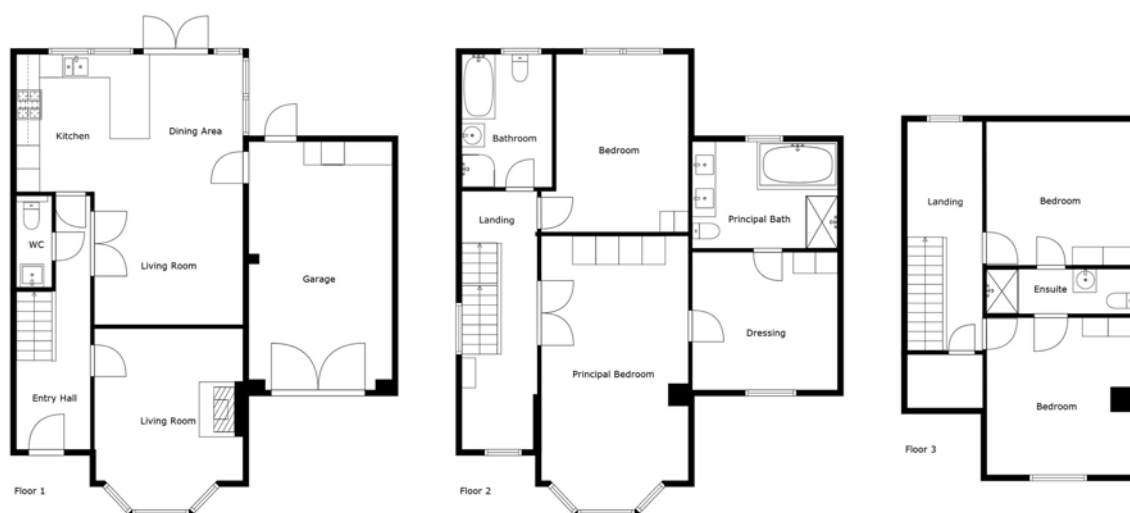
Outside

GARAGE: 21' 1" x 12' 2" (6.42m x 3.71m) Plumbed for washing machine, space for tumble dryer, power and light.

FRONT Gated entrance to shared brick pavior driveway with parking for up to 3 vehicles, garden laid in lawns,

REAR Enclosed westerly facing rear garden, decking area, additional patio seating area, laid in lawns, surrounding hedging, outside light and tap.





Sizes And Dimensions Are Approximate. Actual May Vary.

Location:

From Tillysburn roundabout travelling on the Holywood Road, turn left into Circular Road and Wilshire Drive is on the right hand side before CIYMS.

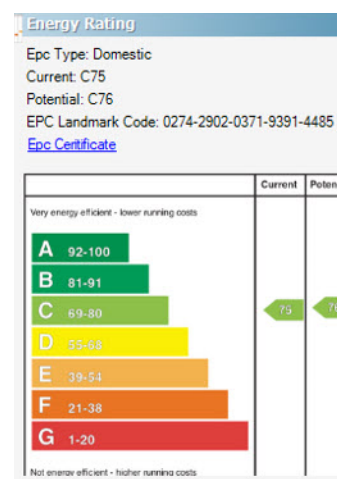
Belfast Branches

Lisburn Road - 028 90 66 3030
Ballyhackamore - 028 90 65 0000

Other Branches

North Down - 028 90 42 4747
Lisburn - 028 92 66 1700

www.templetonrobinson.com



These particulars do not constitute any part of an offer or contract. None of the statements contained in these particulars are to be relied on as statements or representations of fact and intending purchasers must satisfy themselves by inspection or otherwise to the correctness of each of the statements contained in these particulars. The Vendor does not make or give, neither Templeton Robinson, nor any person in its employment has any authority to make or give, any representation or warranty whatever in relation to this property. All dimensions are taken to nearest 3 inches.