



Computer Visual

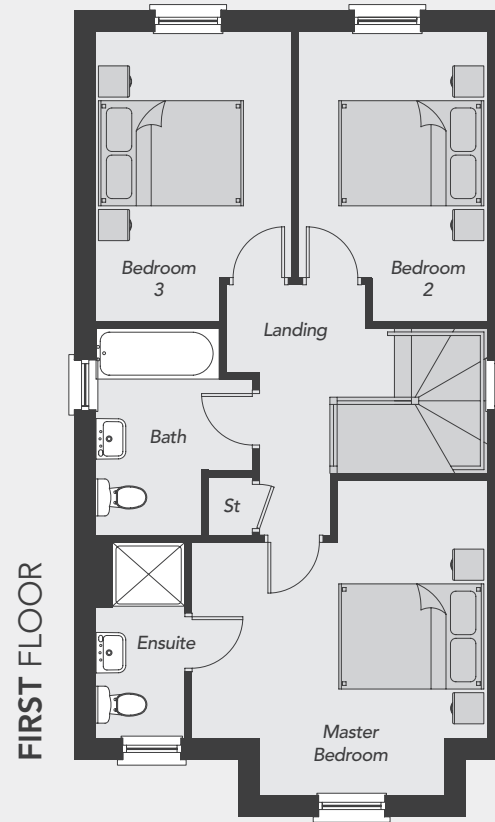
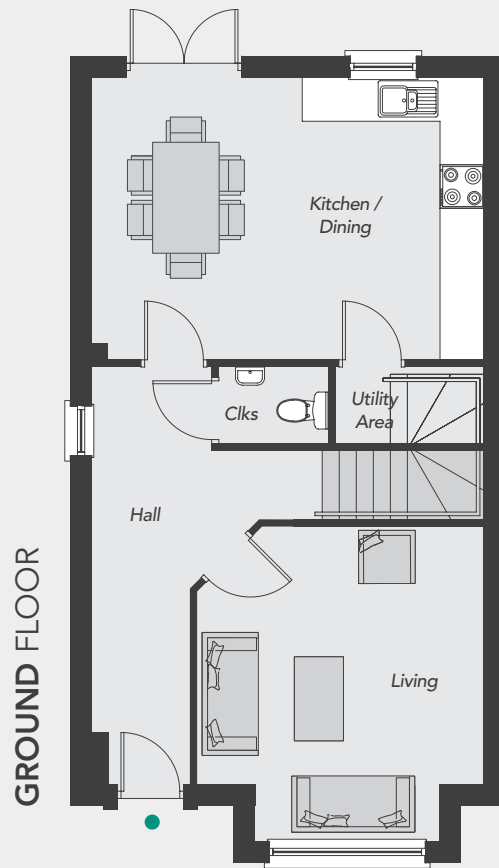
The Alnwick BR

Total Floor Area: 1,175 sq ft approx.



**Drumnagoon
Park**
DRUMNAGOON ROAD
CRAIGAVON

Visit us online at: www.drumnagoonpark.co.uk



The Alnwick BR

GROUND FLOOR

Entrance Hall	
Living <i>Plus Bay</i>	12'11" x 11'7"
Kitchen/Dining	17'8" x 12'9"
Utility Area	6'8" x 3'5"
Cloakroom	4'11" x 3'5"

FIRST FLOOR

Master Bedroom <i>Max</i>	14'2" x 13'4"
Ensuite	8'6" x 4'0"
Bedroom 2	13'1" x 8'10"
Bedroom 3	13'1" x 8"
Bathroom	9'4" x 5'6"

Total Floor Area
1,175 sq ft approx.



All dimensions are approximate and 3D computer generated images are for illustration purposes only, both of which may be subject to change.