

The Clontarf

The Sutton

Computer visual

The Sutton

Total Floor Area: 1022 sq ft / 95 sq. m approx.



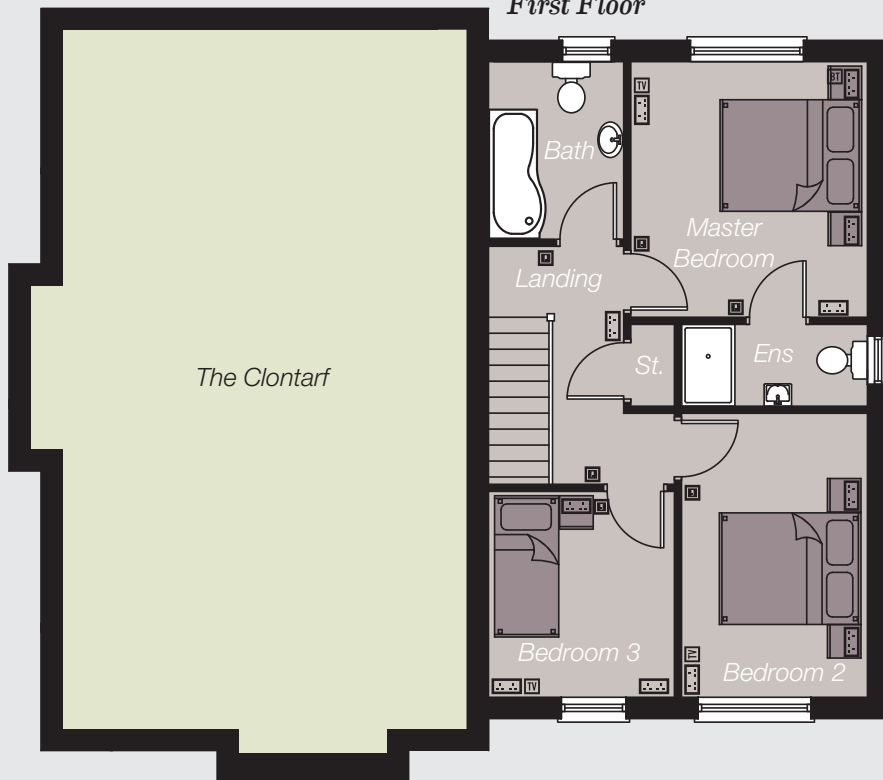
49 Church Place, Lurgan
028 **3834 4888**
www.msrestateagents.com

ASHGROVE HEIGHTS

ASHGROVE ROAD
PORTADOWN

The Sutton

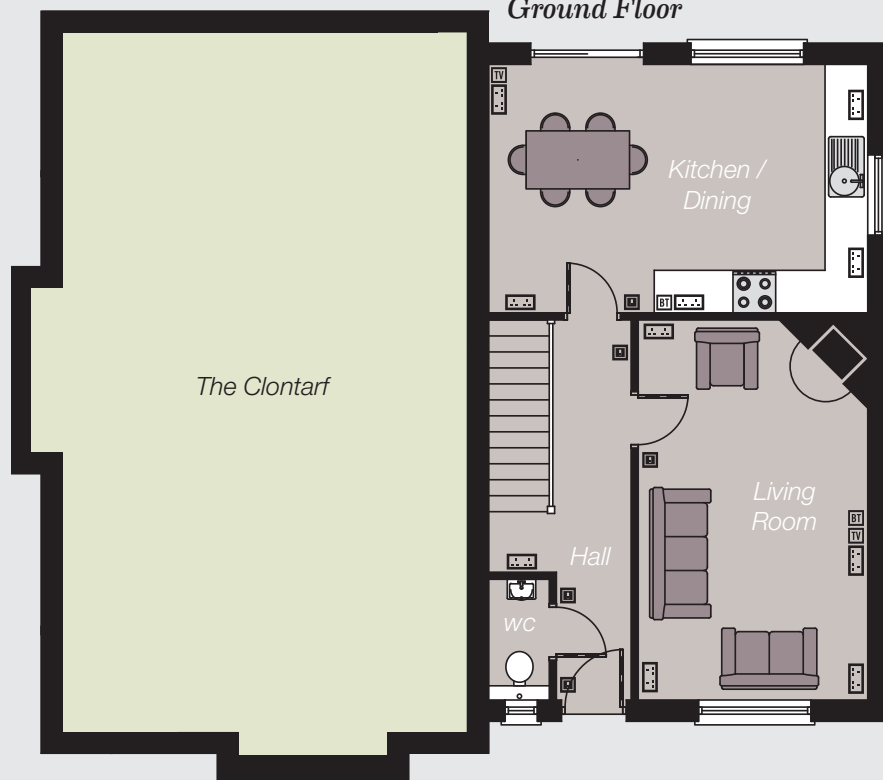
First Floor



First Floor

Master Bed	11'9" x 10'10"
	3.60m x 3.32m
Ensuite	
Bedroom 2	13'1" x 8'6"
	4.00m x 2.61m
Bedroom 3	9'6" x 8'6"
	2.90m x 2.61m
Bathroom	8'2" x 6'2"
	2.50m x 1.90m

Ground Floor



Ground Floor

Living Room	17'6" x 10'6"
	5.35m x 3.22m
Kitchen / Dining	17'5" x 11'5"
	5.32m x 3.50m
WC	

Total Floor Area:
1022 sq ft approx.
95 sq m approx.

Key

Socket	⏏
Light Switch	⏻
Telephone Connection Point	BT
Television Connection Point	TV

The computer visual on the other side of this insert is for illustrative purposes only. Floorplans above are not to scale and all measurements are approximate. Whilst every care is taken in preparing this information, no representation is given, and it does not form any part of a contract. Any intending purchaser must satisfy himself/herself as to the correctness of each of the statements contained in these particulars. We reserve the right to alter specifications without due notice.