

Dundrod Drive, Lisburn, County Down, BT28

Asking Price: £135,000 To be advised

 **Reeds Rains**

[reedsrains.co.uk](https://www.reedsrains.co.uk)

Dundrod Drive, Lisburn, County Down, BT28
Asking Price: £135,000 To be advised

Council Tax Band:
EPC Rating: E

This charming end of terrace house features 3 bedrooms, a spacious living room, and a modern kitchen with integrated appliances. The property boasts a private garden and off-street parking. Conveniently located near schools, parks, and transport links. Ideal for families looking for a cosy home in a sought-after area.

Entrance Hall

Kitchen
12'4" x 9' (3.76m x 2.74m)
Exception a range of modern fitted high and low level units, laminate work tops, built-in ceramic hob and electric coven, inlaid sink unit, mixer tap, over head extractor fan , part tiled walls, open to casual dining area.

Living Room
16' x 11'11" (4.88m x 3.63m)
Feature fireplace

Bathroom
A deluxe white suite comprising panelled bath, wash hand basin, vanity unit, separate shower cubicle, part tiled walls, low level WC, part tiled walls.

Utility Room
4'10" x 3'8" (1.47m x 1.12m)

Bedroom 1
12'4" x 10' (3.76m x 3.05m)

Bedroom 2
12'8" x 12'4" (3.86m x 3.76m)

Bedroom 3
12'4" x 9'10" (3.76m x 3m)

Basement Storage

Rear Gardens
Part paved patio, oil storage tank, oil fire boiler.

The Reeds Rains branches at 350 Upper Newtownards Road, Ballyhackamore, Belfast, N Ireland BT4 3EX, 18 Main Street, Bangor, Co Down, N Ireland BT20 5AG, Somerset House, 240-242 Ormeau Road, Belfast, Co Antrim, N Ireland BT7 2FZ, 10 High Street, Carrickfergus, Co Antrim, N Ireland BT38 7AF, 8/8A Carrmoney Road, Glengormley, County Antrim, N Ireland BT36 6HN, 14/16 Market Street, Lisburn, County Antrim , N Ireland BT28 1AB and 2 Frances Street, Newtownards, County Down, N Ireland BT23 4JA are operated by Favsko NI Limited which is independently owned and operated under a Licence from Reeds Rains Limited.

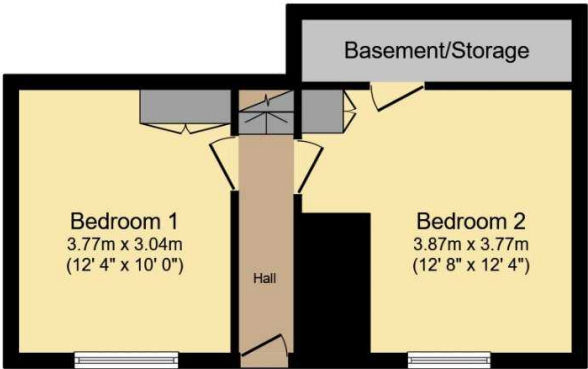
All Measurements
All Measurements are Approximate.

Laser Tape Clause
All measurements have been taken using a laser tape measure and therefore, may be subject to a small margin of error.

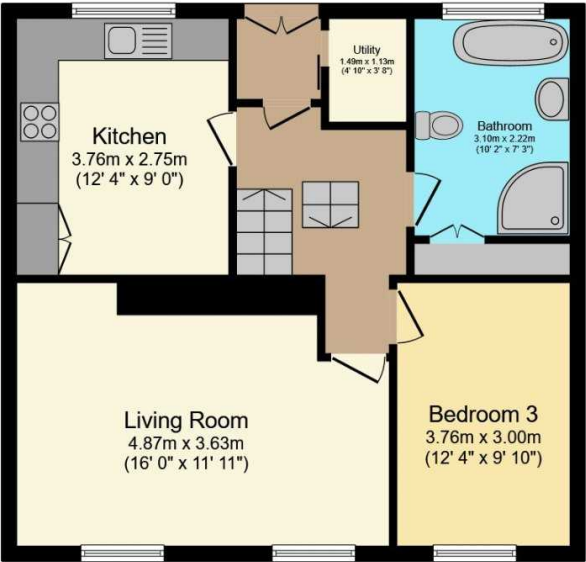
Floorplan Clause
Measurements are approximate. Not to Scale. For illustrative purposes only.



For full EPC please contact the branch.



Ground Floor



First Floor

Total floor area 93.3 sq.m. (1,005 sq.ft.) approx

This floor plan is for illustrative purposes only. It is not drawn to scale. Any measurements, floor areas (including any total floor area), openings and orientation are approximate. No details are guaranteed, they cannot be relied upon for any purpose and they do not form part of any agreement. No liability is taken for any error, omission or misstatement. A party must rely upon its own inspection(s).
Powered by www.focalagent.com

We may refer you to recommended providers of ancillary services such as Conveyancing, Mortgages, Insurance and Surveying. We may receive a referral fee for recommending their services. You are not under any obligation to use the services of the recommended provider, which may also be an associated company of Reeds Rains.

Other important information which you will need to know about this property can be found at reedsrains.co.uk