

Glenmore Drive, Lisburn, County
Down, BT27

Asking Price: £130,000
Leasehold

 **Reeds Rains**

[reedsrains.co.uk](https://www.reedsrains.co.uk)

Glenmore Drive, Lisburn, County Down, BT27
Asking Price: £130,000 Leasehold

Council Tax Band:
EPC Rating: D

Charming 3-bedroom mid-terraced house in this highly desirable location within Glenmore This property offers a modern kitchen, spacious living area, three bedroom plus shower room, convenient access to local amenities. Ideal for families seeking a cosy home in a desirable neighbourhood. Book your viewing today.

Entrance Hall

Living Room

14'3" x 13'9" (4.34m x 4.2m)
Laminate flooring

Kitchen/ Dining

11'11" x 10'2" (3.63m x 3.1m)
Extensive range of high and low level units, built-in oven and hob unit, single drainer stainless steel sink unit, feature island unit.

Utility Room

10'2" x 4'9" (3.1m x 1.45m)

Landing

Bedroom 1

10'9" x 10'3" (3.28m x 3.12m)

Bedroom 2

11'9" x 8'4" (3.58m x 2.54m)

Bedroom 3

8'9" x 8'4" (2.67m x 2.54m)

Shower Room

Separate shower cubicle, wash handbasin, low level WC

Outside

Front in lawns, enclosed to rear,m oil fired boiler, oil storage tank.

Note To Purchasers

CUSTOMER DUE DILIGENCE As a business carrying out estate agency work, we are required to verify the identity of both the vendor and the purchaser as outlined in the following: The Money Laundering, Terrorist Financing and Transfer of Funds (Information on the Payer) Regulations 2017 - <https://www.legislation.gov.uk/ukxi/2017/692/c> ontents

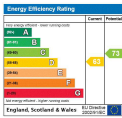
To be able to purchase a property in the United Kingdom all agents have a legal requirement to conduct Identity checks on all customers involved in the transaction to fulfil their obligations under Anti Money Laundering regulations. We outsource this check to a third party and a charge will apply of £20 + Vat for each person.

The Reeds Rains branches at 350 Upper Newtownards Road, Ballyhackamore, Belfast, N Ireland BT4 3EX, 18 Main Street, Bangor, Co Down, N Ireland BT20 5AG, Somerset House, 240-242 Ormeau Road, Belfast, Co Antrim, N Ireland BT7 2FZ, 10 High Street, Carrickfergus, Co Antrim, N Ireland BT38 7AF, 8/8A Carnmoney Road, Glengormley, County Antrim, N Ireland BT36 6HN, 14/16 Market Street, Lisburn, County Antrim , N Ireland BT28 1AB and 2 Frances Street, Newtownards, County Down, N Ireland BT23 4JA are operated by Favsko NI Limited which is independently owned and operated under a Licence from Reeds Rains Limited.

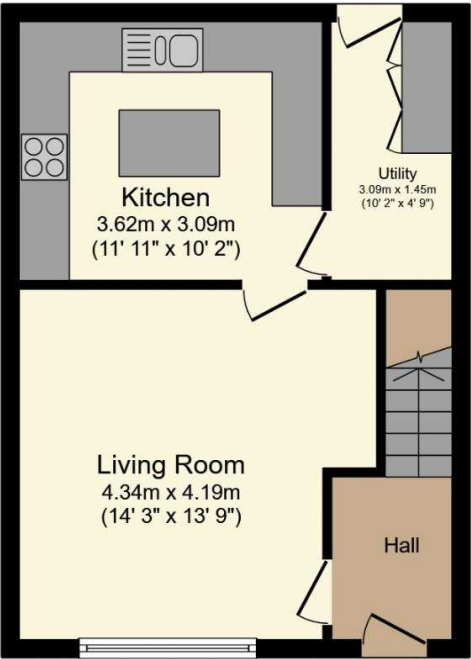
All Measurements
All Measurements are Approximate.

Laser Tape Clause
All measurements have been taken using a laser tape measure and therefore, may be subject to a small margin of error.

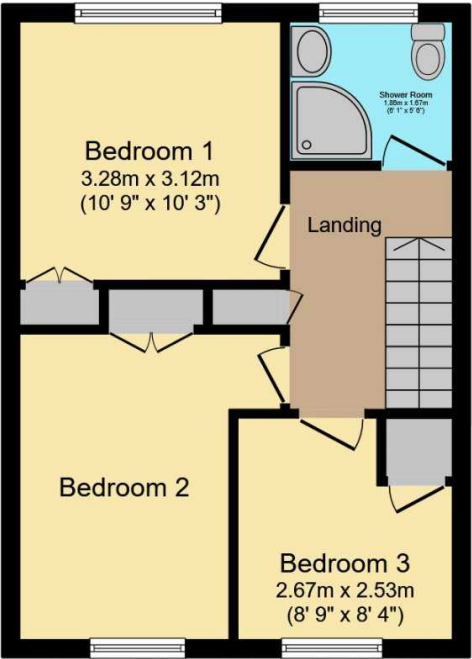
Floorplan Clause
Measurements are approximate. Not to Scale. For illustrative purposes only.



For full EPC please contact the branch.



Ground Floor



First Floor

Total floor area 76.3 sq.m. (821 sq.ft.) approx

This floor plan is for illustrative purposes only. It is not drawn to scale. Any measurements, floor areas (including any total floor area), openings and orientation are approximate. No details are guaranteed, they cannot be relied upon for any purpose and they do not form part of any agreement. No liability is taken for any error, omission or misstatement. A party must rely upon its own inspection(s).
Powered by www.focalagent.com