


The Old Mill, Hillsborough, County Down, BT26

**Asking Price: £199,950**

**Freehold**

 **Reeds Rains**

[reedsrains.co.uk](https://www.reedsrains.co.uk)



The Old Mill, Hillsborough, County Down, BT26  
Asking Price: £199,950 Freehold

Council Tax Band:  
EPC Rating: D

Charming semi-detached 3-bedroom house boasting a beautiful garden and off-street parking. Situated in a desirable neighbourhood, this property offers a perfect blend of comfort and convenience. Don't miss out on this fantastic opportunity to make it your home!

**Entrance Hall**  
Wooden flooring.

**Living Room**  
13'8" x 12'1" (4.17m x 3.68m)  
Feature fireplace with wooden surround, open fire, slate hearth, wooden flooring.

**Kitchen/ Dining Area**  
18'3" x 10'4" (5.56m x 3.15m)  
Extensive range of high and low level units, laminate work tops, single drainer stainless steel sink unit, built-in ceramic hob and electric oven, dishwasher, open to casual dining area, double glazed sliding doors to rear patio.

**Landing**  
Built-on hot press

**Bedroom 1**  
13'10" x 10'8" (4.22m x 3.25m)

**Bedroom 2**  
10'8" x 10'6" (3.25m x 3.2m)

**Bedroom 3**  
10'1" x 7'4" (3.07m x 2.24m)

**Bathroom**  
White suite comprising panel;led bath, wash hand basin, low level WC, wall and floor tiling.

**Driveway / Car Parking**  
To front

**Gardens**

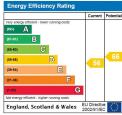
Laid in neat lawns to side and rear, paved patio area. Oil Fired heating/ oil fired boiler.

The Reeds Rains branches at 350 Upper Newtownards Road, Ballyhackamore, Belfast, N Ireland BT4 3EX, 18 Main Street, Bangor, Co Down, N Ireland BT20 5AG, Somerset House, 240-242 Ormeau Road, Belfast, Co Antrim, N Ireland BT7 2FZ, 10 High Street, Carrickfergus, Co Antrim, N Ireland BT38 7AF, 8/8A Carrmoney Road, Glengormley, County Antrim, N Ireland BT36 6HN, 14/16 Market Street, Lisburn, County Antrim , N Ireland BT28 1AB and 2 Frances Street, Newtownards, County Down, N Ireland BT23 4JA are operated by Favsko NI Limited which is independently owned and operated under a Licence from Reeds Rains Limited.

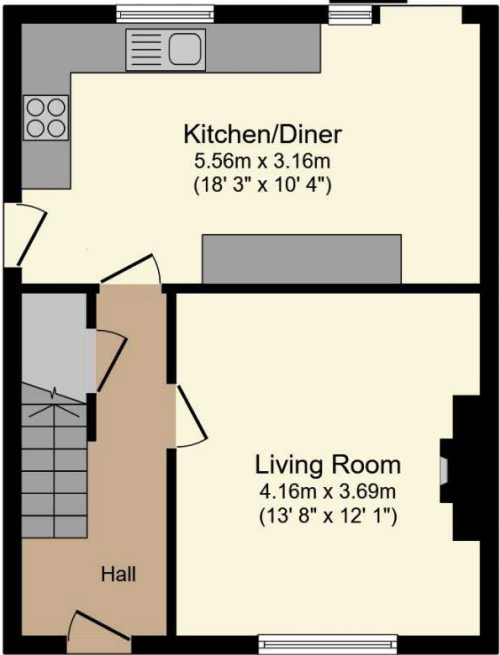
All Measurements  
All Measurements are Approximate.

Laser Tape Clause  
All measurements have been taken using a laser tape measure and therefore, may be subject to a small margin of error.

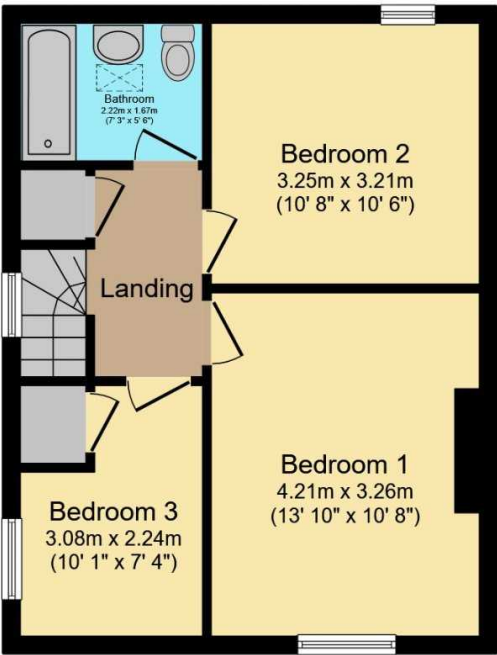
Floorplan Clause  
Measurements are approximate. Not to Scale. For illustrative purposes only.



For full EPC please contact the branch.



Ground Floor



First Floor

Total floor area 82.5 sq.m. (888 sq.ft.) approx

This floor plan is for illustrative purposes only. It is not drawn to scale. Any measurements, floor areas (including any total floor area), openings and orientation are approximate. No details are guaranteed, they cannot be relied upon for any purpose and they do not form part of any agreement. No liability is taken for any error, omission or misstatement. A party must rely upon its own inspection(s).  
Powered by [www.focalagent.com](http://www.focalagent.com)

We may refer you to recommended providers of ancillary services such as Conveyancing, Mortgages, Insurance and Surveying. We may receive a referral fee for recommending their services. You are not under any obligation to use the services of the recommended provider, which may also be an associated company of Reeds Rains.

Other important information which you will need to know about this property can be found at [reedsrains.co.uk](http://reedsrains.co.uk)