

Property People™

FOR SALE



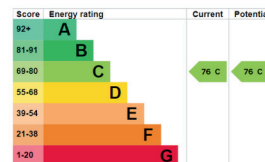
D1 7, Whitehall Square

Belfast, BT12 5EU

Offers from **£139,950**

Features

- Modern Two Bedroom Apartment
- Open Plan Living/Kitchen Area
- Master Bedroom with En-suite
- Extensive Communal Courtyard
- Minutes from City Centre
- Heating: Gas
- C76 / C76



Property Information

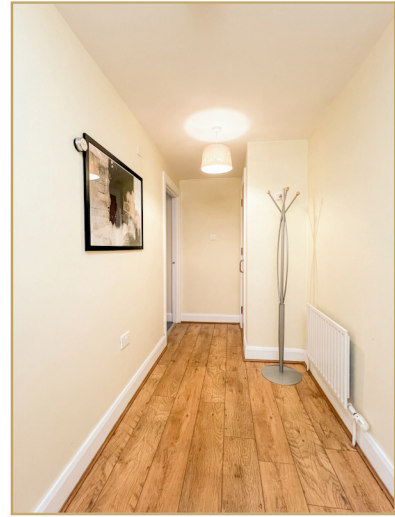
This property presents an exceptional opportunity for both first-time buyers and investors alike. Nestled in the sought-after locale of South Belfast, its strategic positioning offers unparalleled convenience, being in close proximity to Belfast City Centre and Queen's University.

Upon entry, you are greeted by a spacious entrance hall adorned with laminate wood flooring, setting a tone of modern elegance. The generously proportioned lounge seamlessly integrates with the kitchen, creating a fluid and functional living space. The accommodation boasts two well-appointed bedrooms, with the master bedroom featuring an en-suite shower room, while a separate shower room serves the main hallway, ensuring utmost convenience and comfort for residents.

The development's central communal courtyard adds a charming touch to the living experience, providing an inviting outdoor space for relaxation and socialisation. Ideal for young professionals, the property offers easy access to local transport links and a diverse range of amenities, further enhancing its appeal.

Moreover, the absence of a chain ensures a swift and hassle-free transaction, facilitating a seamless transition for potential buyers or investors. With its desirable location, modern amenities, and investment potential in the rental market, this property stands as a compelling opportunity in the vibrant landscape of South Belfast.

Give our South Belfast office a call today to register interest on 028 9074 7300!





Room Measurements

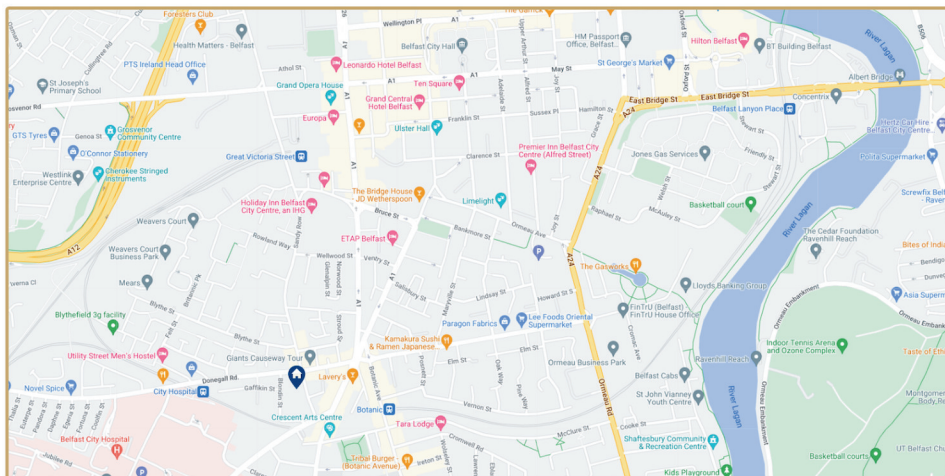
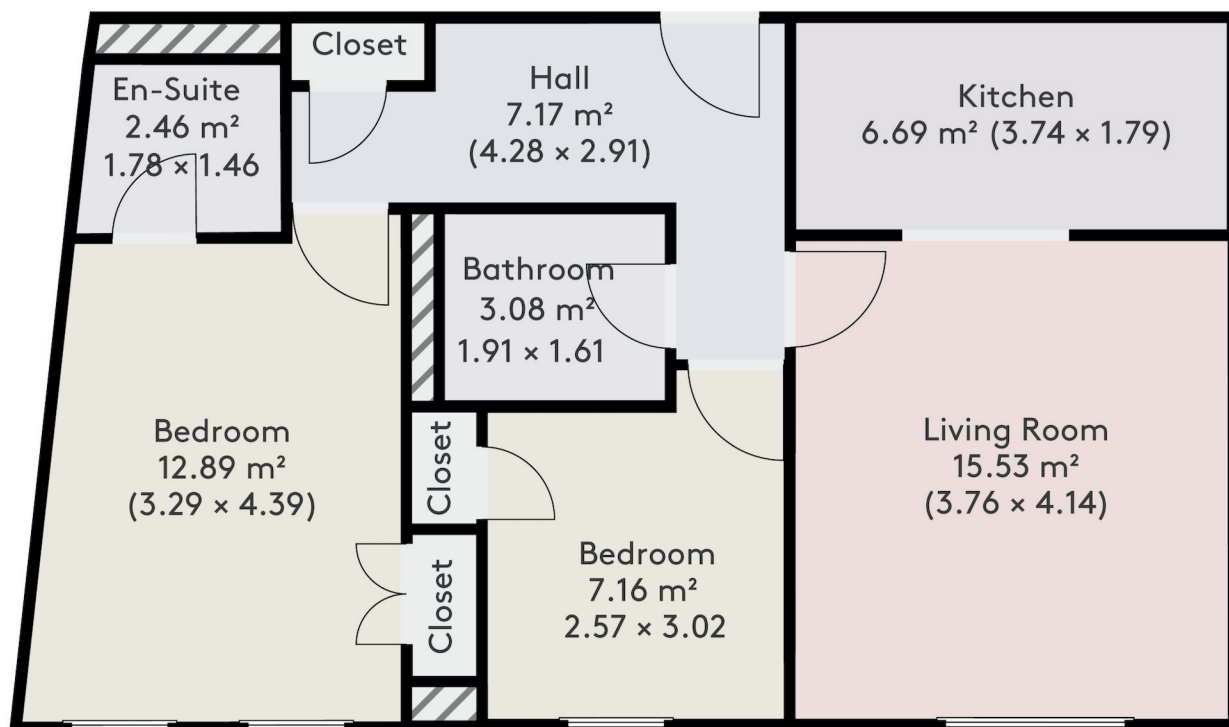
- APARTMENT HALL 2.91M (9'7) X 4.28M (14'1)
- LIVING ROOM 3.76M (12'4) X 4.14M (13'7)
- KITCHEN 3.74M (12'3) X 1.79M (5'10)
- MAIN BATHROOM 1.91M (6'3) X 1.61M (5'3)
- BEDROOM 1 3.29M (10'10) X 4.39M (14'5)
- EN-SUITE 1.78M (5'10) X 1.46M (4'9)
- BEDROOM 2 2.57M (8'5) X 3.02M (9'11)

Emma McCloy

emma@propertypeopleni.com
07766 748 095



1st Floor



Clogher Valley
 24 Main Street
 Augher
 BT77 OBD
 028 8556 9209

North & West Belfast
 223 Antrim Road
 Belfast
 BT15 2GY
 028 9074 7300

South & East Belfast
 122 Lisburn Road
 Belfast
 BT9 6AH
 028 9074 7300

www.propertypeopleni.com

advice@propertypeopleni.com

