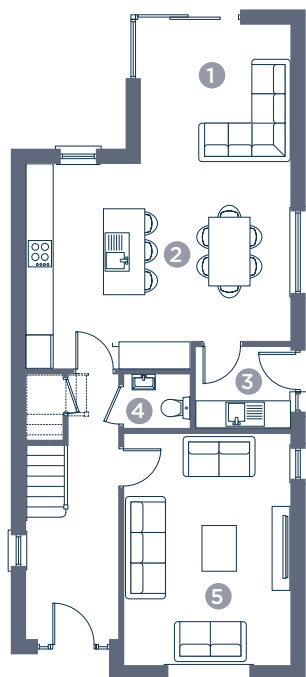


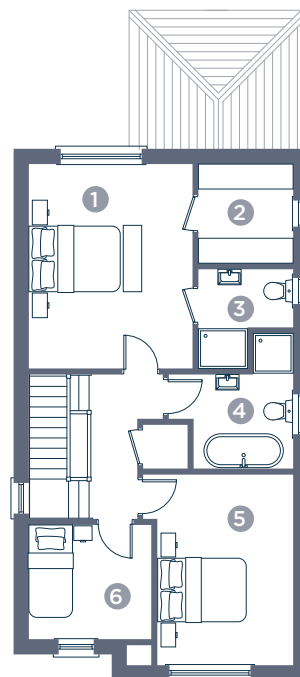
LISOWEN

Limavady Road



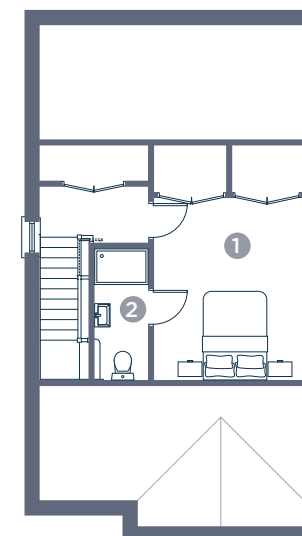
GROUND FLOOR

- | | |
|-------------------|-------------|
| 1. Family | 3.3m × 3.0m |
| 2. Kitchen/Dining | 5.8m × 4.5m |
| 3. Utility | 2.1m × 1.8m |
| 4. WC | 1.5m × 1.5m |
| 5. Living | 3.7m × 5.1m |



FIRST FLOOR

- | | |
|--------------------|-------------|
| 1. Master Bedroom | 3.6m × 4.5m |
| 2. Master Dressing | 2.1m × 2.2m |
| 3. Master En-suite | 2.1m × 2.2m |
| 4. Bathroom | 3.0m × 2.1m |
| 5. Bedroom 2 | 3.0m × 4.2m |
| 6. Bedroom 3 | 2.7m × 2.5m |



SECOND FLOOR

- | | |
|--------------|-------------|
| 1. Bedroom 4 | 3.3m × 4.0m |
| 2. En-suite | 1.2m × 2.9m |