



3 MEADOW PARK, PORTBALLINTRAE



X 3



X 1



X 1

Energy Efficiency Rating		Current	Potential
Very energy efficient - lower running costs			
(92 plus)	A		
(81-91)	B		
(69-80)	C		
(55-68)	D		
(39-54)	E	58	67
(21-38)	F		
(1-20)	G		
Not energy efficient - higher running costs			

OFFERS OVER £225,000

3 MEADOW PARK, PORTBALLINTRAIE

This charming 3 bedroom semi detached bungalow is ideally located, just a short distance from Portballintrae Harbour, Bushmills and the stunning Runkerry Beach. The property offers peaceful countryside views to the rear, spacious living accommodation and a well maintained garden. It's perfect for those seeking a coastal lifestyle with easy access to local attractions.

FEATURES

- Oil fired central heating.
- Double glazed windows & sun room in uPVC frames.
- Stunning panoramic countryside views.
- Fully enclosed garden area to the rear.
- Concrete driveway and parking area.
- Detached garage.
-
-
-

ADDITIONAL INFORMATION

TENURE:

ANNUAL RATES: £1,127.46

ANNUAL SERVICE CHARGE: £0

SCAN THE QR CODE BELOW FOR FULL DETAILS



VIEWING & FURTHER QUERIES

Philip Tweedie & Company (Portstewart Office)
81 The Promenade
Portstewart
BT55 7AF

T: 028 7083 5444
E: portstewart@philiptweedie.com
W: www.philiptweedie.com

ENTRANCE PORCH

0.80 m x 1.26 m (2'7" x 4'2")

Tiled floor; electrics cupboard; glass panel door leading to the hallway.

ENTRANCE HALL

4.16 m x 1.55 m (13'8" x 5'1")

Engineered wood floor; shelved hot press; cloaks cupboard; storage cupboard; access to the roof space.

LOUNGE

3.57 m x 5.09 m (11'9" x 16'8")

Multi fuel stove set on a stone hearth with wooden mantle; engineered wood floor.

DINING KITCHEN

4.39 m x 3.28 m (14'5" x 10'9")

Range of fitted units; laminate work surfaces; stainless steel sink & drainer; space for cooker, dishwasher & under counter fridge; plumbed for washing machine; engineered wood floor; part tiled walls; recessed lighting; door to the sun room.

SUN ROOM

1.87 m x 3.26 m (6'2" x 10'8")

Double glazed sun room; tiled floor; door to the rear.

BEDROOM 1

2.96 m x 3.58 m (9'9" x 11'9")

Double bedroom to the rear; engineered wood floor.

BEDROOM 2

2.98 m x 2.70 m (9'9" x 8'10")

Double bedroom to the front; engineered wood floor.

BEDROOM 3

2.98 m x 2.49 m (9'9" x 8'2")

Double bedroom to the rear; engineered wood floor.

BATHROOM

1.89 m x 2.61 m (6'2" x 8'7")

Panel bath with electric shower & glass screen; toilet; wash hand basin; wall mounted vanity unit; towel radiator; tiled floor; part tiled walls; recessed lighting; extractor fan.

EXTERIOR

()

GARAGE

4.88 m x 3.14 m (16'0" x 10'4")

Roller door; concrete floor; oil boiler; power & light.

OUTSIDE FEATURES

()

- Stunning panoramic countryside views to the rear.
- Double glazed sun room.
- Enclosed garden area to the rear.
- Garden in lawn to the front.
- Concrete driveway with parking area.
- Detached garage.

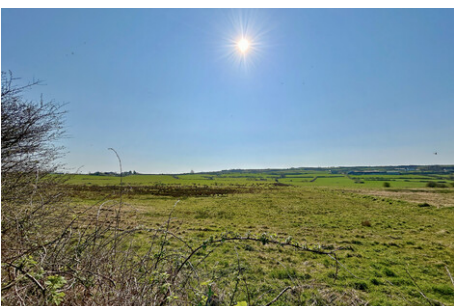
()

()



PHILIP TWEEDIE LIMITED (REGISTRATION NUMBER: NI 631370) - REGISTERED OFFICE: 62-64 NEW ROW, COLERAINE, BT52 1EJ
Whilst we endeavour to make our sales details accurate and reliable in every way, if there is any point which is of particular importance to you in deciding whether to submit an offer please contact our offices and we will be pleased to verify the information to you. Philip Tweedie & Company for themselves and for the Vendors of this property whose agents they are give notice that: (i) the particulars are set out as a general outline only for the guidance of intending purchasers and do not constitute part of an offer of contract; (ii) all descriptions, dimensions, references to condition and necessary permissions for use and occupation and other details are given in good faith and are believed to be correct but their accuracy is not guaranteed and any intending purchaser should not rely on them as statements or representations of fact but must satisfy themselves by inspection or otherwise as to the correctness of each of them; (iii) no person in the employment of Philip Tweedie & Company has any authority to make or give any representation or warranty in relation to this property.

PHOTOS



PHOTOS

