



Computer Visual

The Primrose - Type B

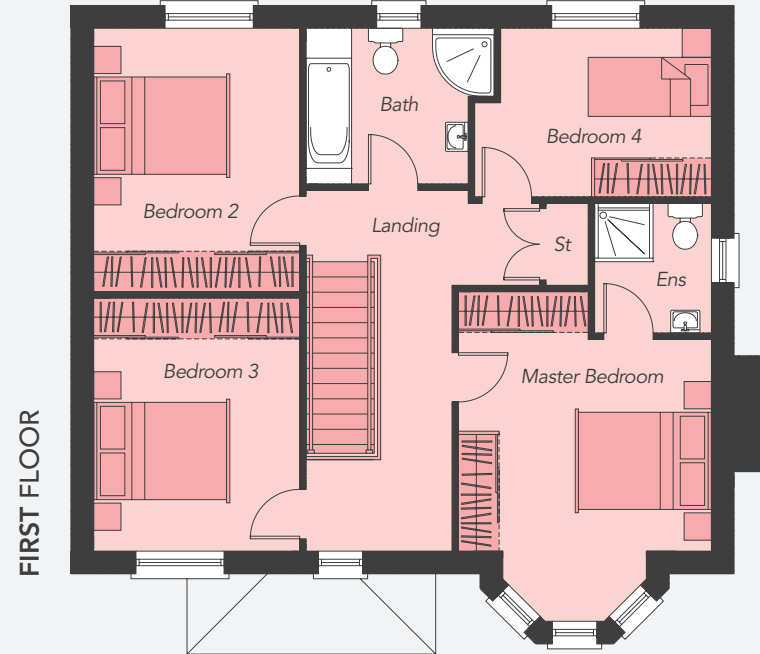
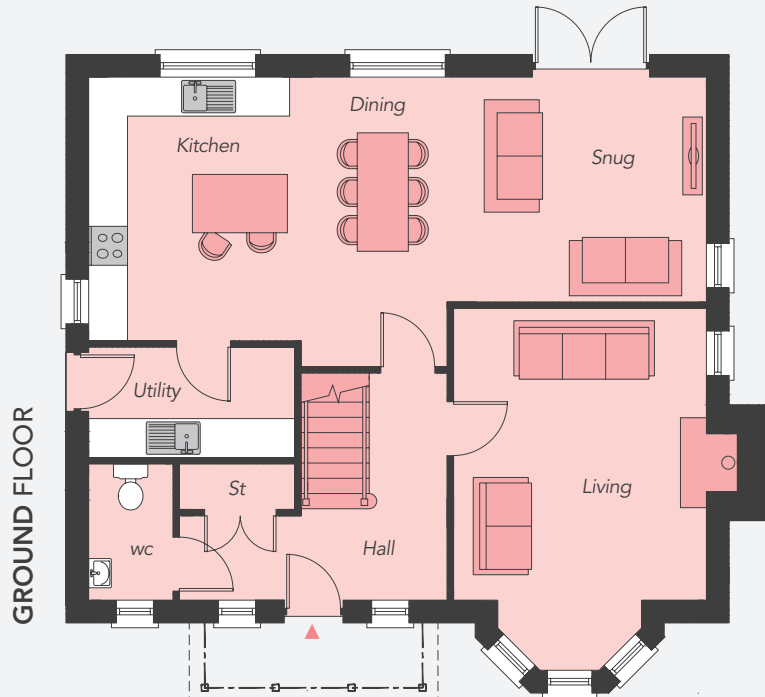
Total Floor Area:  
1,710 sq ft approx.





# DRUMMAN MEADOWS

OFF PORTADOWN ROAD  
ARMAGH



## The Primrose Type B

Total Floor Area:  
1,710 sq ft approx. (Inc. Garage)

### GROUND FLOOR

Entrance Hall	
Living (plus bay)	14'9" x 12'9"
Kitchen / Dining (max)	18'1" x 13'4"
Snug	13'1" x 11'4"
Utility Room	10'5" x 5'6"
WC	6'10" x 4'3"

### FIRST FLOOR

Master Bed (plus bay)	13'1" x 12'9"
Ensuite	6'6" x 5'10"
Bedroom 2	13'4" x 10'5"
Bedroom 3	12'9" x 10'5"
Bedroom 4 (max)	11'11" x 8'6"
Bathroom (max)	9'6" x 7'10"

Layout of Bathroom / Ensuite / WC subject to change

