

A background of soft-focus pink roses. In the bottom left corner, a single rose is in sharp focus, showing its delicate petals. The rest of the image is a bokeh of many more roses in various shades of pink and red, creating a romantic and elegant atmosphere.

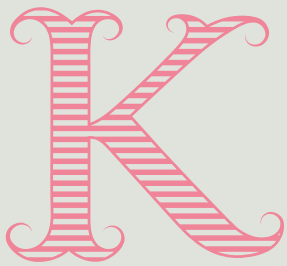
K

KENVARRA

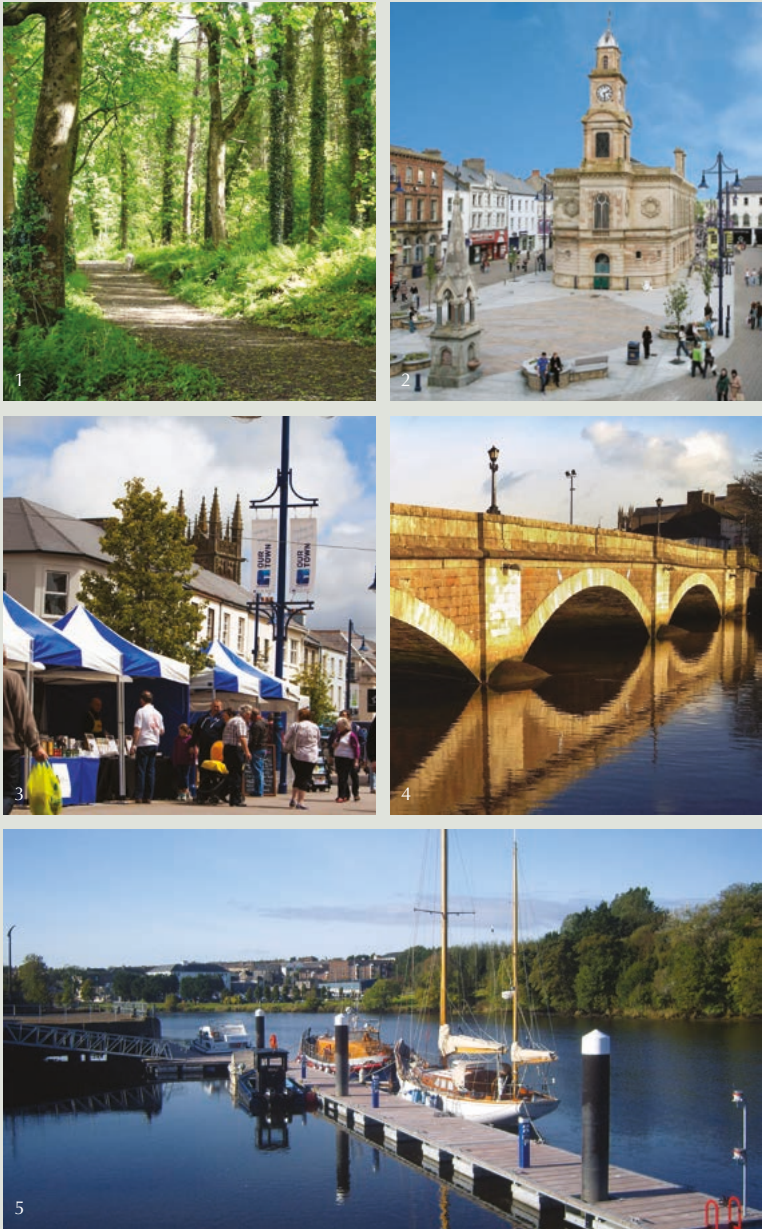
COLERAINE

BEAUTIFUL FAMILY HOMES

A PEACEFUL SANCTUARY IN WHICH
TO APPRECIATE ALL THAT
WATERSIDE LIVING HAS TO OFFER



WELCOME TO KENVARRA



1 | Somerset Forest 2 | Coleraine Town Hall 3 | Coleraine Town Centre
4 | River Bann 5 | Coleraine Marina





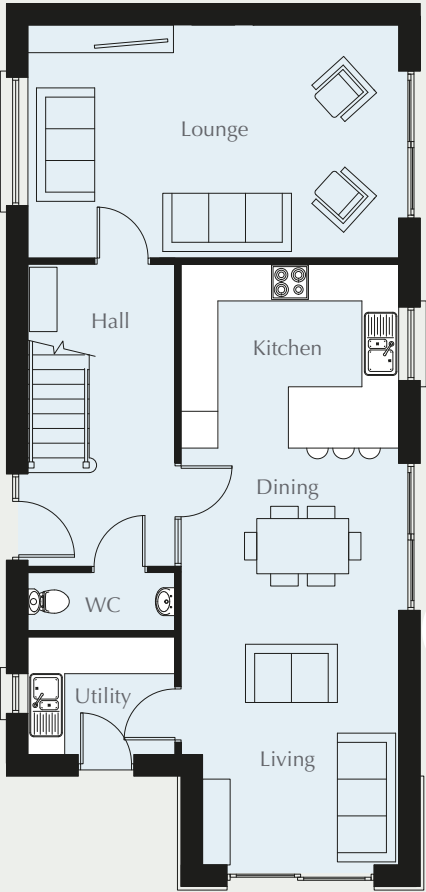
THE KINGFISHER

4 BEDROOM DETACHED FAMILY HOME

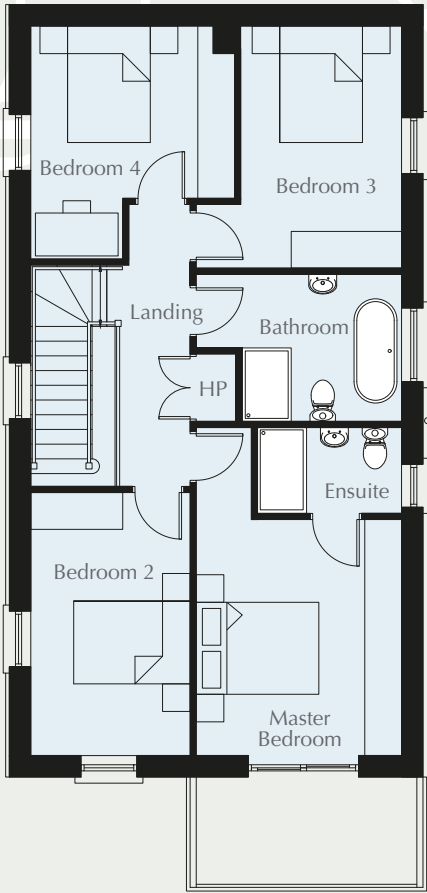
No. 4 - 1611 sq ft



SITE LAYOUT (not to scale)



GROUND FLOOR	ft/in	meters
Entrance Hall with separate WC		
Kitchen Dining Living	32'2" x 10'5"	9.80 x 3.20
Utility	8'2" x 6'3"	2.50 x 1.92
Lounge	19'9" x 12'5"	6.05 x 3.80



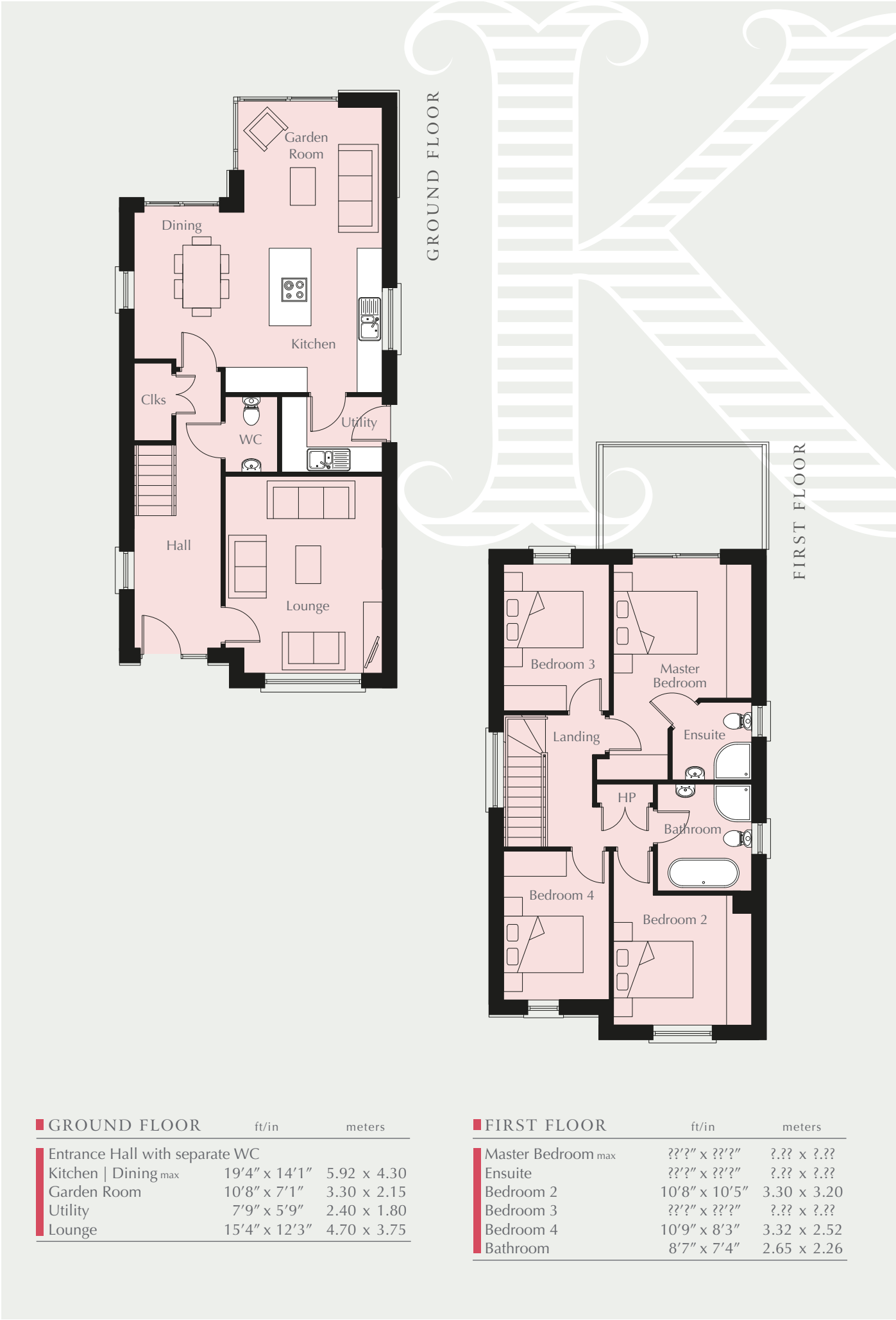
FIRST FLOOR	ft/in	meters
Master Bedroom	12'6" x 10'10"	3.85 x 3.35
Ensuite	7'7" x 4'6"	2.35 x 1.40
Bedroom 2	14'1" x 8'5"	4.29 x 2.60
Bedroom 3	12'10" x 8'6"	3.95 x 2.62
Bedroom 4	12'5" x 10'9"	3.80 x 3.32
Bathroom	10'10" x 7'9"	3.35 x 2.40



THE MOORHEN
4 BEDROOM DETACHED FAMILY HOME
Nos. 5 | 6 - 1458 sq ft



SITE LAYOUT (not to scale)





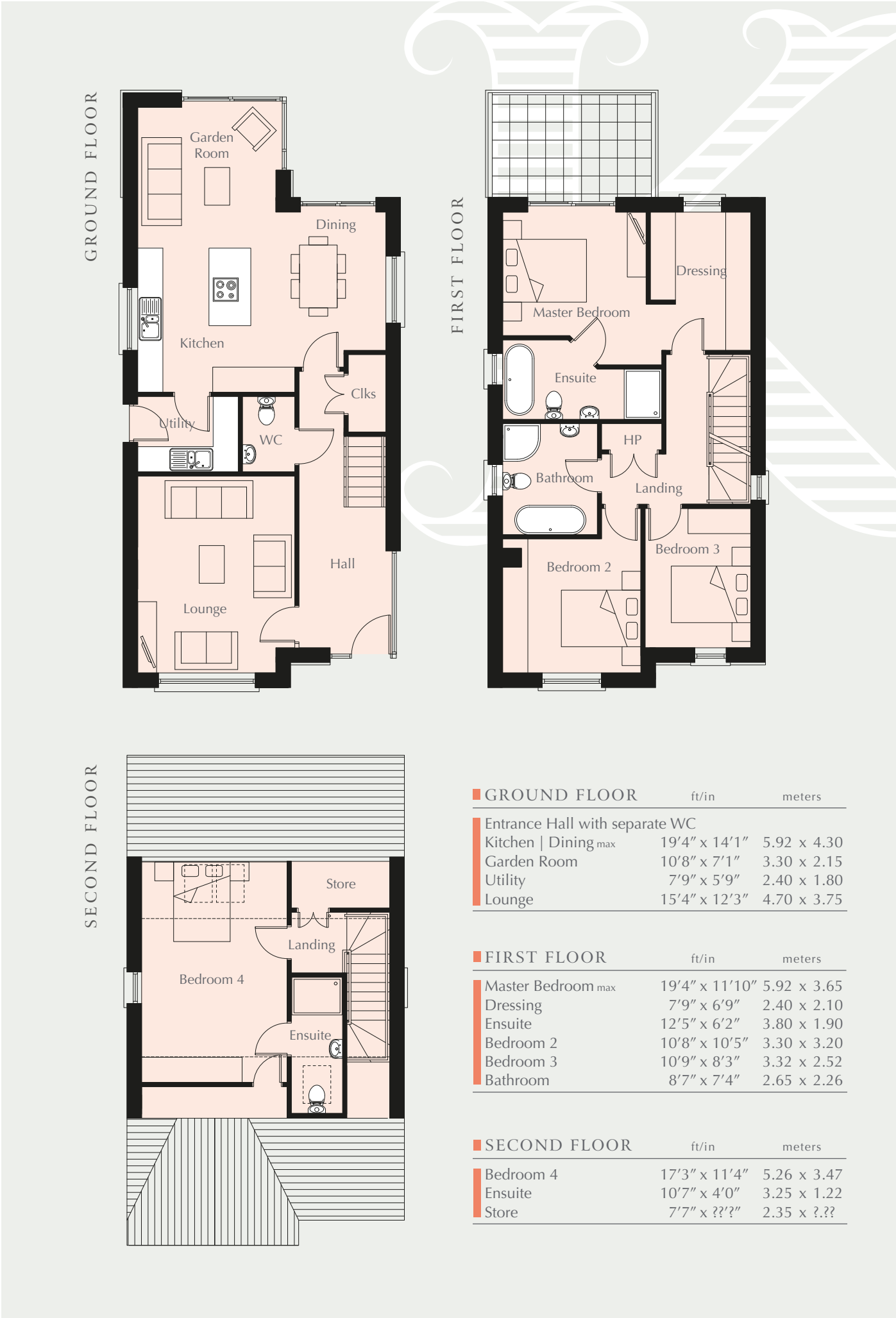
THE OSPREY

4 BEDROOM DETACHED FAMILY HOME

No. 7 - 1794 sq ft



SITE LAYOUT (not to scale)

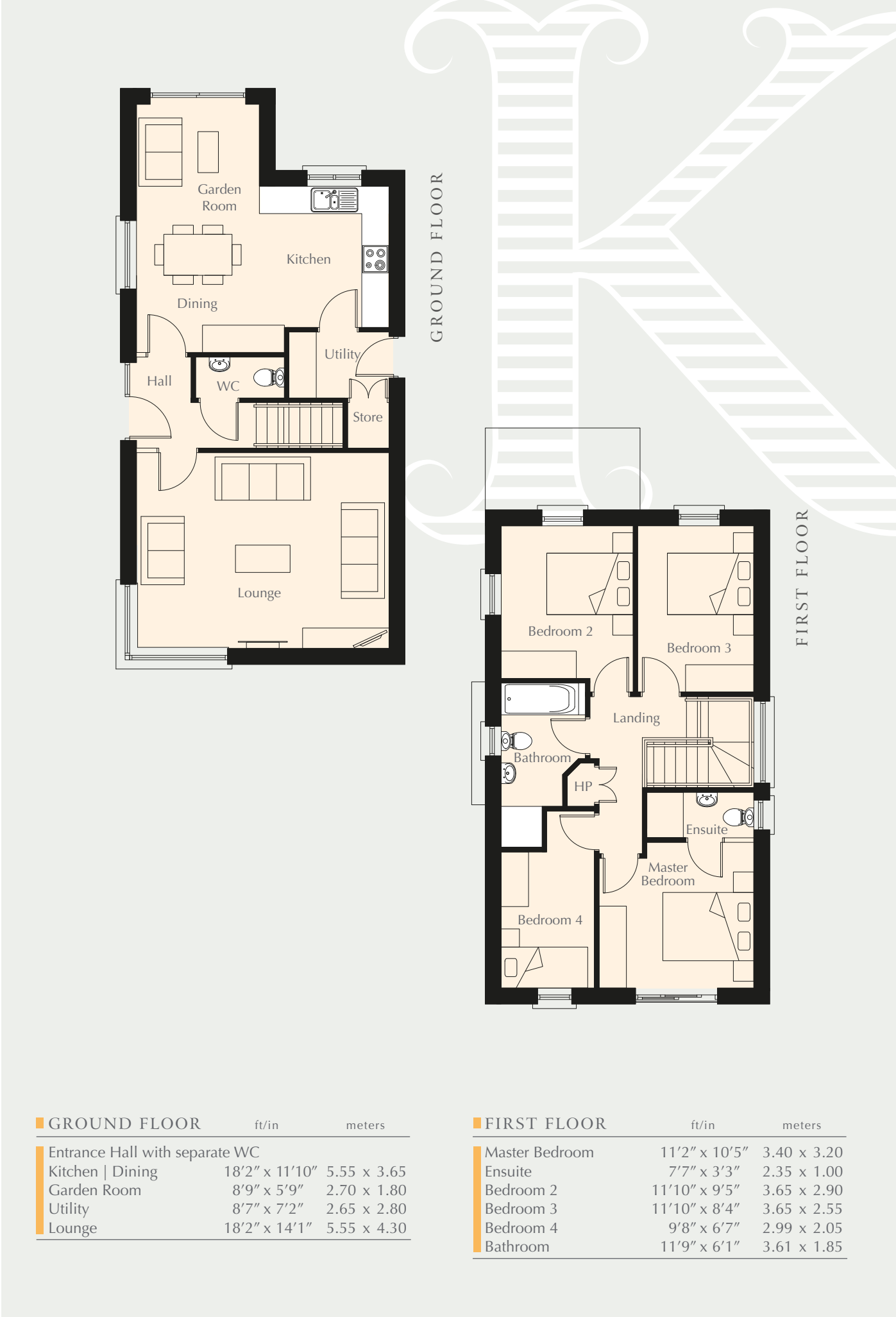




THE SANDPIPER
4 BEDROOM DETACHED FAMILY HOME
No. 1 - 1265 sq ft



SITE LAYOUT (not to scale)





Images shown for illustration purposes only

QUALITY SPECIFICATION

KITCHEN

- Contemporary range of kitchen finishes with choice of doors and worktops
- Kitchen appliances to include hob, oven, fridge freezer and washing machine
 - Fully tiled floor
- Upstand between worktop and high level units

SANITARY WARE

- Modern white sanitary ware to bathrooms, ensembles and WCs
 - Fully tiled floor
- Fully tiled shower enclosures and splash backs to sinks and baths

INTERNAL DETAILING

- Pre finished Oak internal doors with contemporary door furniture
 - Bevelled and painted skirting boards and architraves
 - Painted balustrades and handrails to stairs
 - Wired for alarm system
 - Walls and ceilings painted in emulsion
- Quality carpet to bedrooms, reception room, hall, stairs and landing
- Excellent level of floor, walls and roofspace insulation to latest Building Control regulations

EXTERNAL FINISHES

- Gas fired central heating
- Double glazed windows in uPVC frames
- Composite front and rear door with 5 point locking system
- Aluminium guttering and PVC downpipes
 - Landscaped front and rear gardens
 - Tarmac driveways
 - Timber fencing to rear boundaries

WARRANTY

- Global Homes 10 year warranty





WELL CONNECTED

Coleraine Town Centre	1.6 miles	Giant's Causeway	12.0 miles
Portstewart.....	3.0 miles	Ballymena	28.0 miles
Portrush	5.0 miles	Derry	30.0 miles
Portballintrae	8.5 miles		



T. 028 7034 4433 | www.philiptweedie.com

These particulars do not constitute any part of an offer or contract. None of the statements contained in these particulars are to be relied on as statements or representations of fact and intending purchasers must satisfy themselves by inspection or otherwise as to the correctness of each of the statements contained in these particulars. All measurements of area are quoted as Net Sales Area which is calculated in accordance with the RICS Code of Measuring Practice (6th Edition) APP21. Configures of kitchens, bathrooms and wardrobes may be subject to alteration from those illustrated without prior notification. Purchasers should satisfy themselves as to the current specification at the time of booking.

The Vendor does not make or give, and neither the Selling Agent, nor any person in their employment, has any authority to make or give any representation or warranty whatever in relation to any property. Artist's impressions and internal photographs are for illustration only. Plans are not to scale and all dimensions shown are approximate E. & O. E.

B L O C K
creative property marketing