

Apartment 11.17 The Arc, Belfast, BT3 9FN

Price: £270,000





McGuinness |
Fleck

Luxury, Style and Location In Highly Regarded Development

Price: £270,000

2 | 2 | 1

We are delighted to offer for sale this fabulous fourth floor apartment, which offers exclusive luxury, style and location. This magnificent, beautifully finished property presents a great opportunity for buyers to enjoy large, waterside, open plan living overlooking the River Lagan and Belfast Harbour Marina.

The property is located in one of Belfast's most sought after areas with easy access to the city centre, motorway network, greenway/cycle routes, airports, Titanic Belfast, Titanic Hotel, Maritime Mile, and SSE Arena.

This dual aspect apartment comprises two large double bedrooms, master with ensuite opening onto an impressive balcony, perfect for entertaining catching the evening sun with stunning views over Belfast Harbour Marina, the River Lagan, the city and its hills beyond. The light-filled open plan lounge, kitchen and dining area offers amazing views with a second and generous wraparound balcony overlooking the iconic H&W cranes, SS Nomadic, Maritime Mile, Titanic Hotel and Titanic Belfast.

Two Double Bedrooms (Master En-Suite)
Open Plan Lounge, Dining And Kitchen
Luxury Bathroom
Integrated Home Audio Technology
Modern Fitted Kitchen With Range Of Integrated Appliances
Air Circulation System
Gas Fired Heating System
Door Intercom System
Secure Underground Car Parking



Seamus McFlynn

Email: seamus.mcflynn@mcguinnessfleck.com

Phone: 07872 841317

433 435 Lisburn Road, Belfast, BT9 7EY
(0)28 9068 3020 | info@mcguinnessfleck.com

**McGuinness
Fleck**





McGuinness |
Fleck |



McGuinness |
Fleck |



McGuinness |
Fleck

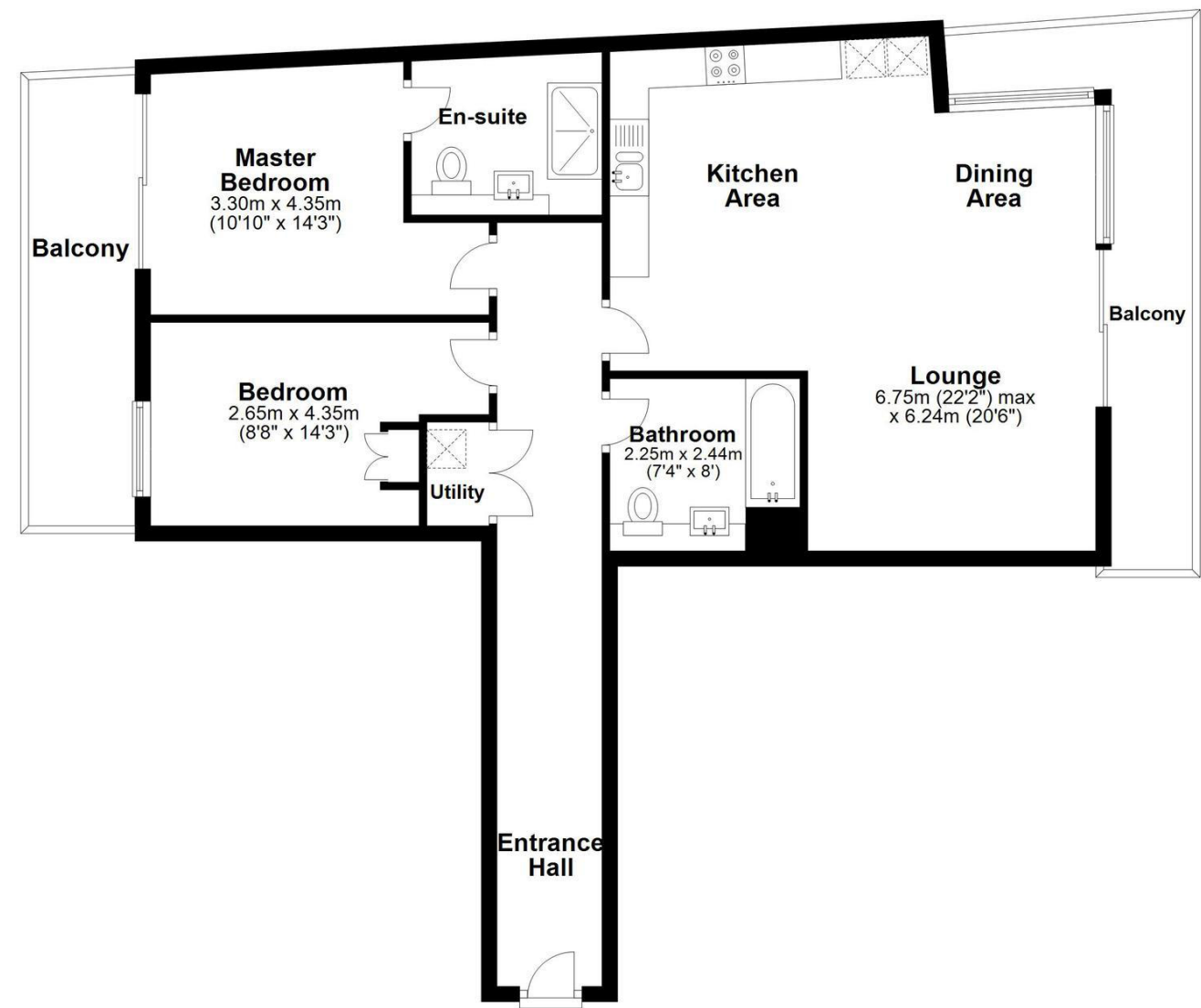


McGuinness |
Fleck

Apartment 11.17 The Arc, Belfast, BT3 9FN

Fourth Floor

Approx 83.5 sq metres (900sq. feet)



Total area: Approx 83.5 sq metres (900sq. feet)

Score	Energy rating	Current	Potential
92+	A		
81-91	B	82 B	82 B
69-80	C		
55-68	D		
39-54	E		
21-38	F		
1-20	G		