

148 Saintfield Road, Belfast, BT8 6HE

Price: Offers Over £175,000





McGuinness
Fleck

Sleek, Stylish Interiors On The Saintfield Road

Price: Offers over £175,000

3 | 1 | 1

This beautifully presented, three bedroom, semi detached property is a fantastic opportunity in South Belfast.

Uniquely positioned on the Saintfield Road, this stylish home property offers modern living and is sure to appeal to both first time buyers and young families.

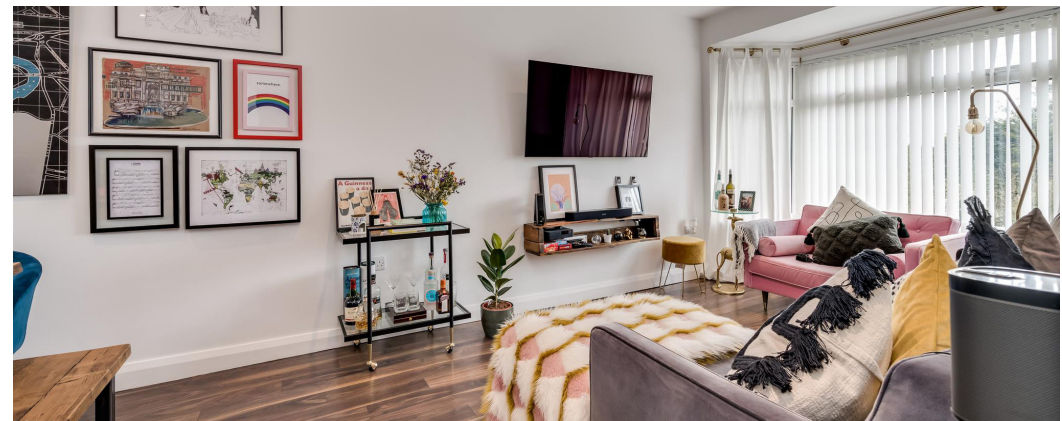
Internally, the property has light-filled front lounge and dining room. This leads onto modern kitchen opening onto large decked area perfect for entertaining.

Upstairs there are three bedrooms.

Externally there is parking at the rear.

Saintfield Road is convenient to schools for all ages in the area, plus straightforward access to the wider motorway network. Forestside shopping centre and a large Tesco superstore are close by with family friendly restaurants and easy access into the city centre.

This fabulous home needs to be inspected to fully appreciate it, and with such demand for property in the area we anticipate strong interest, so early viewing is advised.



Seamus McFlynn

Email: seamus.mcflynn@mcguinnessfleck.com

Phone: 07872 841317

433 435 Lisburn Road, Belfast, BT9 7EY
(0)28 9068 3020 | info@mcguinnessfleck.com

**McGuinness
Fleck**



McGuinness |
Fleck

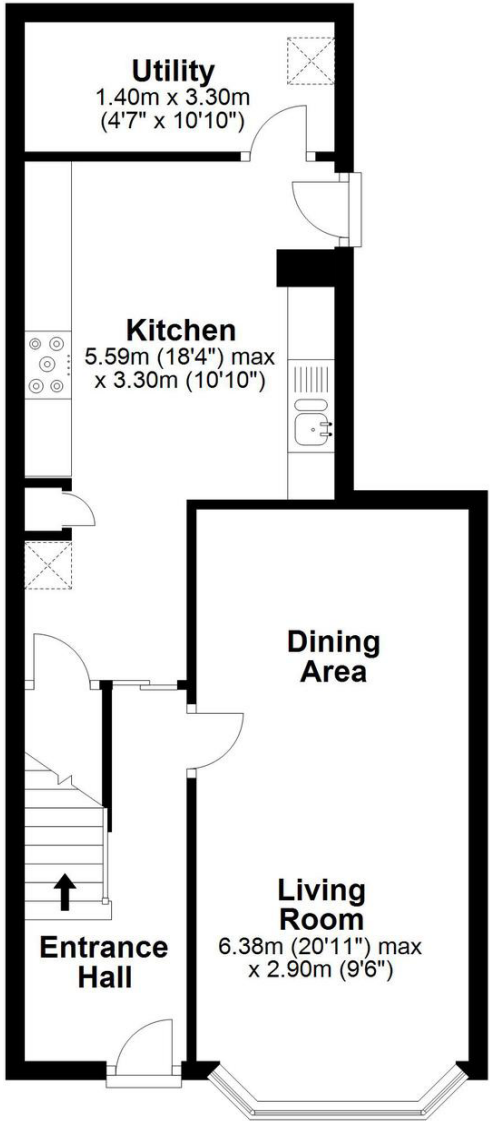


McGuinness |
Fleck |

148 Saintfield Road, Belfast, BT8 6HE

Ground Floor

Approx. 45.8 sq. metres (492.6 sq. feet)



Score	Energy rating	Current	Potential
92+	A		
81-91	B		
69-80	C		
55-68	D	56 D	61 D
39-54	E		
21-38	F		
1-20	G		

First Floor

Approx. 27.9 sq. metres (300.8 sq. feet)

