

5 Ravenhill Reach Mews, Belfast, BT6 8RE

Price: £165,000





McGuinness |
Fleck

Luxury on The Lagan

Price: £165,000

3 | 1 | 1

Situated just off the Ormeau Embankment this splendid two bedroom apartment presents a great opportunity to purchase in a quiet yet convenient development.

Close to many local amenities throughout the area including shops, cafes, schools and excellent transport links into Belfast City centre.

Internally the apartment is beautifully presented offering two bedrooms, modern luxury bathroom and open plan light filled lounge, kitchen and dining enjoying water views across the city.

Additionally there are plans for The Lagan Pedestrian and Cycle Bridge project which comprises the detailed design and construction of a steel twin-pylon cable-stayed bridge, the proposed bridge will span 143m across the River Lagan from the Lagan Towpath at the Gasworks site to the Ormeau Embankment, close to the 'Ozone' indoor tennis centre and leisure complex. This will further enhance access to the city centre.

With water views facing everything the city has to offer and with very good rental demand we highly recommend internal viewing.



Seamus McFlynn

Email: seamus.mcflynn@mcguinnessfleck.com

Phone: 07872 841317

7 Pattons Lane | Holywood | BT18 9FX
(0)28 9068 3020 | info@mcguinnessfleck.com

**McGuinness
Fleck**

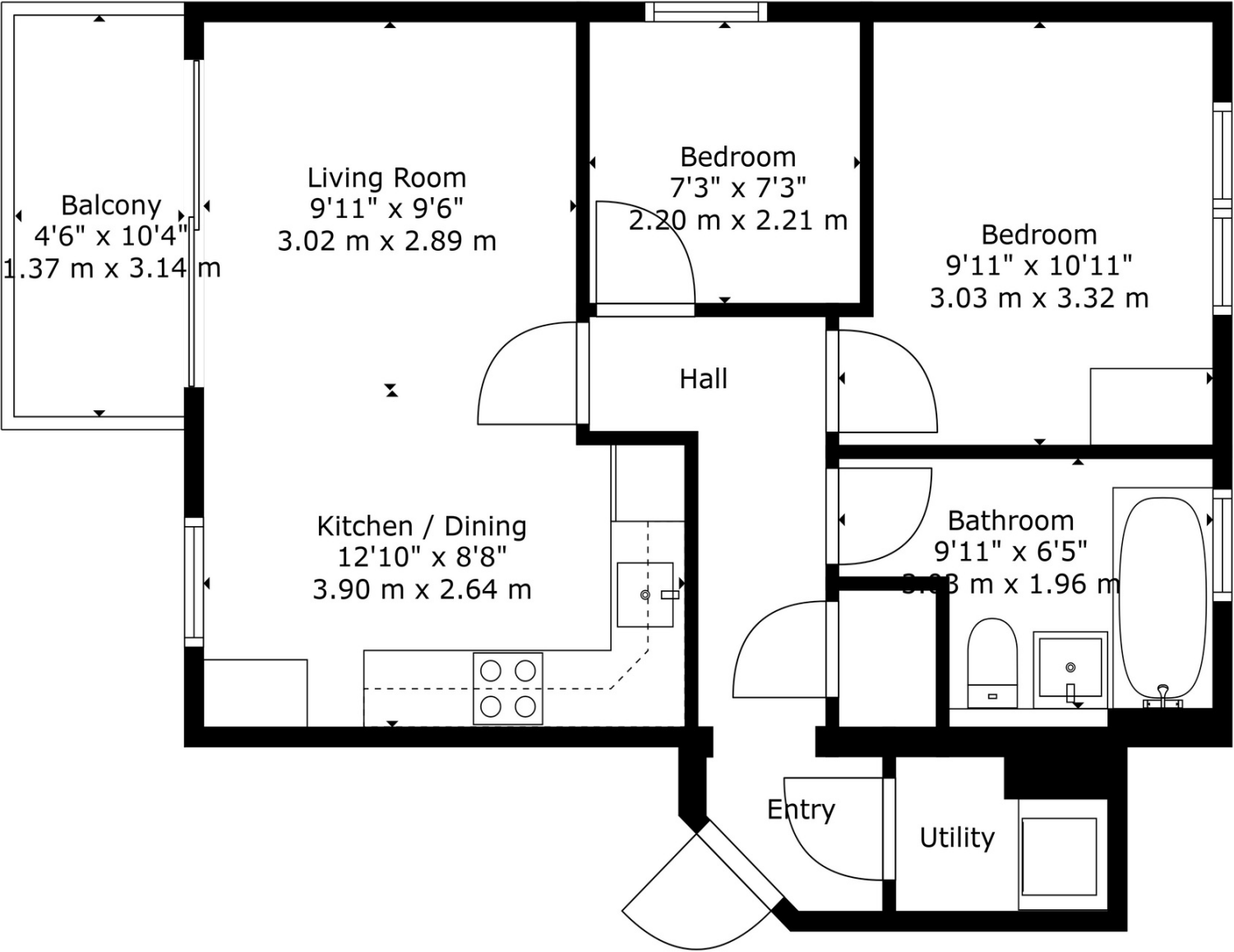


McGuinness
Fleck



McGuinness |
Fleck

5 Ravenhill Reach Mews, Belfast, BT6 8RE



Score	Energy rating	Current	Potential
92+	A		
81-91	B		
69-80	C	74 C	75 C
55-68	D		
39-54	E		
21-38	F		
1-20	G		

- Two Large Bedrooms
- Open Plan Living / Kitchen/ Dining
- Modern Fitted Kitchen
- Double Glazing
- Phoenix Gas Heating
- Service Charge - £1622.28
- Rates - £1,055.23