

6 Uppertown Drive, Newtownabbey, BT36 5NU

For Sale
Offers Over
£74,950

This is a bright, comfortable, mid townhouses situated in a quiet and highly popular regarded area of Mossley. The property will ideally suit a young couple hoping to acquire a house of their own. Early viewing is advised.



Energy Efficiency Rating F.

T: 028 9080 0000





Energy efficiency rating for this property

This property's current energy rating is F. It has the potential to be C.

[See how to improve this property's energy performance.](#)

Score	Energy rating	Current	Potential
92+	A		
81-91	B		
69-80	C		69 C
55-68	D		
39-54	E		
21-38	F	37 F	
1-20	G		

- Mid townhouse in popular residential area
- 3 Bedrooms
- Lounge with polished wood flooring and feature fireplace
- Kitchen open plan to dining area
- Spacious bathroom with white suite and separate shower
- Oil fired central heating
- Double glazing mahogany effect frames
- Car parking space



GROUND FLOOR

RECEPTION HALL: Polished wood flooring

LOUNGE: 14' 10" x 11' 10" (4.52m x 3.61m) Polished wood flooring, feature fireplace, under stair storage

KITCHEN OPEN PLAN TO DINING AREA: 18' 3" x 8' 0" (5.56m x 2.44m) Built in units, laminate work surfaces, single drainer stainless steel sink unit with mixer tap, fridge, extractor fan, washing machine and cooker

FIRST FLOOR

BEDROOM (1): 10' 2" x 8' 2" (3.1m x 2.49m)
Laminate wood flooring

BEDROOM (2): 11' 1" x 10' 4" (3.38m x 3.15m)
Laminate wood flooring

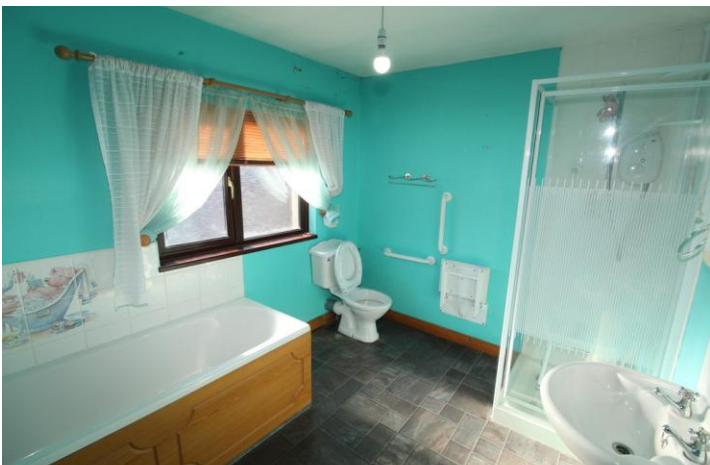
BEDROOM (3): 9' 11" x 7' 0" (3.02m x 2.13m)
Laminate wood flooring, built in robe

SPACIOUS BATHROOM: White suite, panelled bath, pedestal wash hand basin, low flush WC, shower unit with electric shower

OUTSIDE

Front in car parking space

Paved to rear, store with oil fired boiler, oil storage tank



McMillan

jimmcmillan.co.uk

Honesty Integrity Respect

Our business is founded on our values. We strive to demonstrate honesty and

Integrity, treating all our clients with respect, insuring they are paramount concern.

As a forward thinking company we invest heavily in IT, staffing and the wider community to build a foundation for the future.

Our enthusiasm, commitment, energy and professionalism have helped us achieve our position and excellent reputation in the market.

As a local, family-owned business we are proud to serve our clients and community.

Please
call in or
contact us
for any
advice

McMillan Estate Agents

11 Portland Avenue

Glengormley

Newtownabbey

County Antrim

BT36 5EY

T: 028 9080 0000

F:

E: info@jimmcmillan.co.uk



@mcmillanestates



facebook.com/mcmillanestates

Did you know?

For each sale with McMillan Estate Agents a donation is made to the following charities

