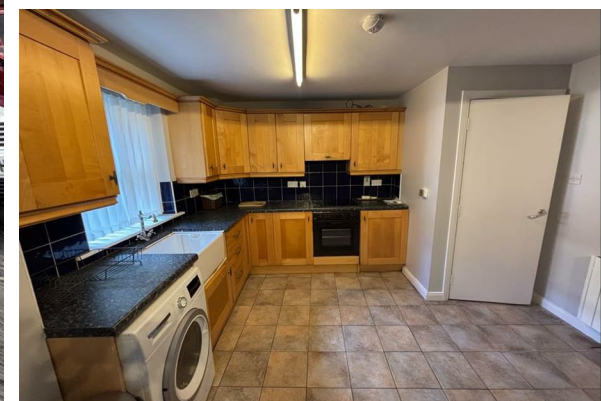




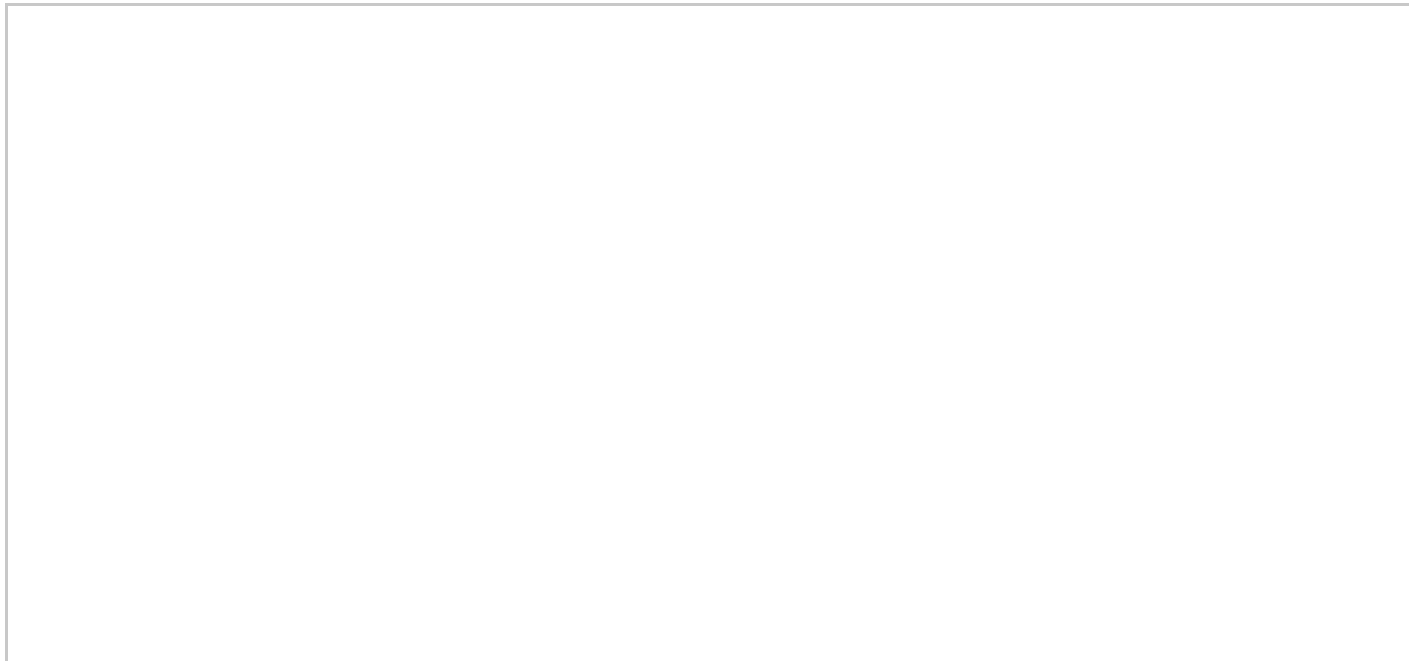
TO LET

Apartment 11, 48 Rossmore Drive, Ormeau Road, Belfast, BT7 3LA
£950 Per month



**LAVERY
MITCHELL**

- Ground Floor Apartment in desirable South Belfast Location
- Open Planned Kitchen, Living & Dining Area
- Private, Enclosed Rear Garden / Decking Area
- Property Has Been Redecorated Throughout
- Available Immediately
- Two Double Bedrooms
- Bathroom With Shower Above Bath-Tub
- Secure Gated Parking
- Electric Heating



Directions

Rossmore Drive is located at the top of the Ormeau Road with access via Ardmore Avenue just prior to the Ormeau / Ravenhill Road roundabout.

THE PROPERTY

Don't miss the opportunity to make this charming apartment your next home.

Tucked away in the delightful Upper Ormeau area, this lovely ground floor apartment on Rossmore Drive offers a wonderful balance of comfort and convenience. Set back from the main road, it provides a peaceful retreat while remaining within easy reach of local amenities, popular restaurants and cafés, Ormeau Park, Forestside Shopping Centre, and excellent transport links.

The property features a smartly designed layout that includes a welcoming reception room with space for both living and dining—perfect for everyday living. The kitchen offers generous counter-top space and comes with integrated appliances.

There are two well-proportioned bedrooms, each offering ample space and comfort. The bathroom is thoughtfully fitted with a shower over the bathtub, meeting all your daily needs with ease.

A secure, gated parking area adds peace of mind, offering both convenience and safety.

To the rear, a private garden enclosed by a high wall creates an ideal spot for entertaining guests or enjoying a quiet escape—perfect for social gatherings or gardening enthusiasts alike.

SITUATION

Wellington Park Business Centre, 3 Wellington Park, Belfast BT9 6DJ.
Unit C11 The Business Centre, 80-82 Rainey Street, Magherafelt, BT45 5AJ.
Tel: 028 95 575555 Email: info@laverymitchell.com www.laverymitchell.com