



3 Rosepark Meadows, Belfast, BT5 7TL
Spacious Family Home in a Quiet Cul-De-Sac Position - £329,950



3 Rosepark Meadows Belfast, BT5 7TL

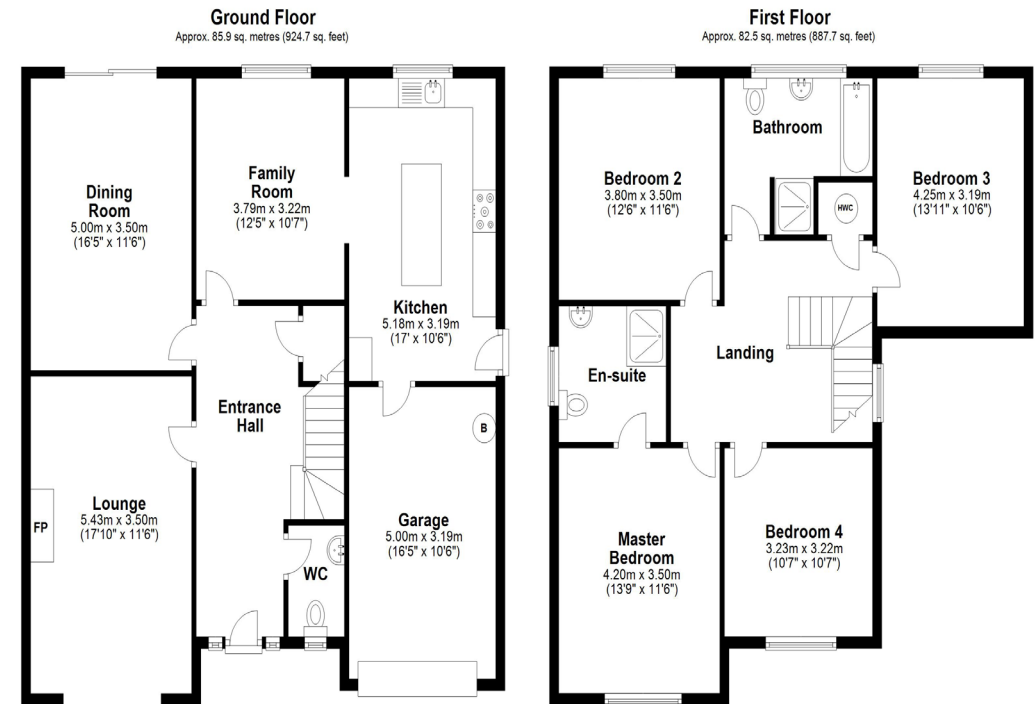
Spacious Family Home in a Quiet Cul-De-Sac Position - £329,950

Highly regarded for its maturity and convenience, Rosepark has long been established as a location of choice for a wide range of buyers. Enjoying ease of access to the Stormont Estate, The Ulster Hospital and vibrant Ballyhackamore with its social amenities, nothing here is missing to enable a comfortable modern lifestyle.

Key Features

- Spacious Family Home in a Quiet Cul-De-Sac Position
- Four Double Bedrooms and Three Reception Rooms
- Well Fitted Kitchen with Modern Cream Units, Granite Worktops and Range
- Bathroom, Shower Room En Suite to Master Bedroom Plus Ground Floor Cloakroom Suite
- Gas Fired Central Heating and Double Glazed Windows
- Burglar Alarm System
- Private Rear Garden
- Integral Garage and Pavior Driveway

Floor Plans



Total area: approx. 168.4 sq. metres (1812.4 sq. feet)

Square footage does not include garage

For illustrative purposes only. Not to scale. Whilst every effort has been made to ensure the accuracy of the floor plan all measurements are approximate and no responsibility is taken for any error, omission or measurement. Plan produced using PlanUp.

3 Rosepark Meadows, Belfast

We endeavour to make our sales details accurate and reliable, however they should not be relied on as statements or representations of fact and they do not constitute any part of an offer or contract. The reseller does not make any representation or give any warranty in relation to the property and we have no authority to do so on behalf of the seller. Any information given by us in these sales details or otherwise is given without responsibility on our part. Services, fitting, and equipment referred to in the sales details have not been tested (unless otherwise stated) and no warranty can be given as to their condition. We strongly recommend that all information, which we provide, about the property is verified by yourself or your advisers. Site plans on brochures are not drawn to scale, however we are happy to provide scale drawings from our office. Artist's impressions are for illustrative purposes only. All details including materials, finishes etc. should be clarified with the agents prior to booking.



 Lindsay
Fyfe & Co.



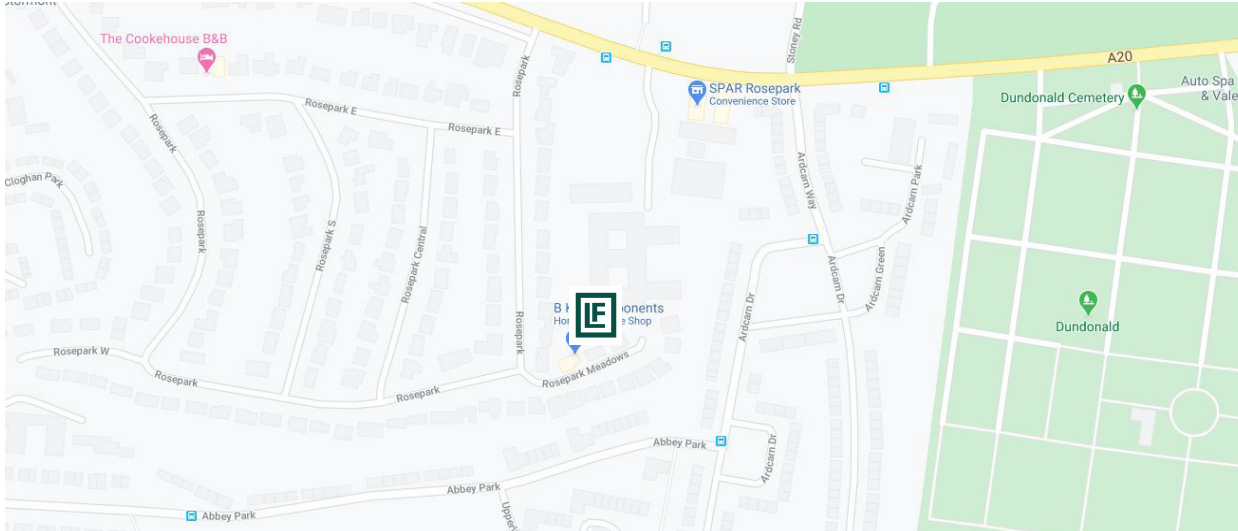
www.lindsayfyfe.co.uk





3 Rosepark Meadows Belfast, BT5 7TL

Spacious Family Home in a Quiet Cul-De-Sac Position - £329,950



Energy Efficiency Rating		
	Current	Potential
Very energy efficient - lower running costs		
A 92 plus		
B 81-91		
C 69-80		
D 55-68		
E 39-54	46	51
F 21-38		
G 1-20		
Not energy efficient - higher running costs		

Office Information

Comber office

2 The Square, Comber, BT23 5DT

028 9187 1787

comber@lindsayfyfe.co.uk

