



30-30A GRAYS HILL

Bangor BT20 3BB

Offers Around

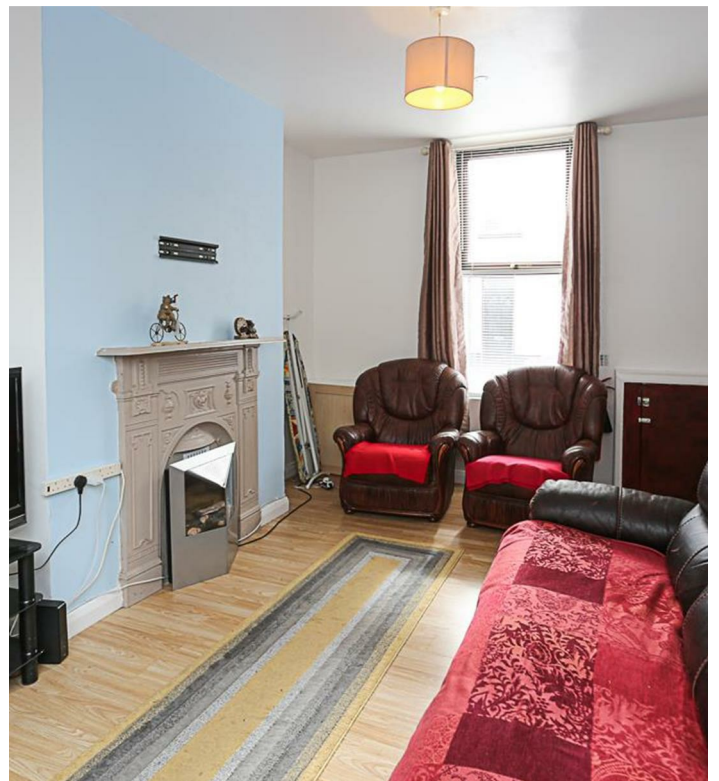
£179,950



APARTMENT | 3  | NO  | 2 

Add text here

- Townhouse split into two self-contained apartments
- One-bedroom ground floor apartment
- Two-bedroom duplex apartment on the first and second floor
- Gas central heating in both units
- Prime city centre location with excellent transport links
- Walking distance to shops, restaurants, marina, and leisure facilities
- Sold as single unit
- Ideal for investors or multi-generational living



ROOM DETAILS

**RECEPTION
HALL:**

LOUNGE:
(12'7" x 10'10")

KITCHEN:
(12'8" x 10'10")

BEDROOM (1):
(11'2" x 7'4")

SHOWER ROOM:

KITCHEN:
(12'8" x 8'1")

BATHROOM:
(10'7" x 7'4")

BEDROOM (1):
(14'6" x 12'7")

BEDROOM (2):
(12'8" x 8'1")

Outside

*30A Grays Hill
Entrance*

LOUNGE:
(14'6" x 12'7")



DIRECTIONS

Travelling on Grays Hill towards Bangor City Center number 30 & 30a is located on the left hand side.



THE LOCAL AREA



Energy Efficiency Rating		
	Current	Potential
Very energy efficient - lower running costs		
(92 plus) A		
(81-91) B		
(69-80) C		
(55-68) D	66	66
(39-54) E		
(21-38) F		
(1-20) G		
Not energy efficient - higher running costs		
Northern Ireland		EU Directive 2002/91/EC

Scan QR code for more details and to arrange a viewing.

OUR BRANCHES

B' FAST (028) 9065 3333 H'WOOD (028) 9042 8888 BANGOR (028) 9131 3833 D'DEE (028) 9188 8881 COMBER (028) 9187 1212

property@johnminnis.co.uk JOHNMINNIS.CO.UK f @ X in ▶



These particulars do not constitute any part of an offer or contract. None of the statements contained in these particulars are to be relied on as statements or representations of fact and intending purchasers must satisfy themselves by inspection or otherwise to the correctness of each of the statements contained in these particulars. The vendor does not make or give, neither John Minnis, nor any person in its employment any authority to make or give, any representation or warranty whatever in relation to the property. All dimensions are taken to the nearest 3 inches.