



67A WARREN ROAD

DONAGHADEE BT21 0PQ

Offers Around

£249,950

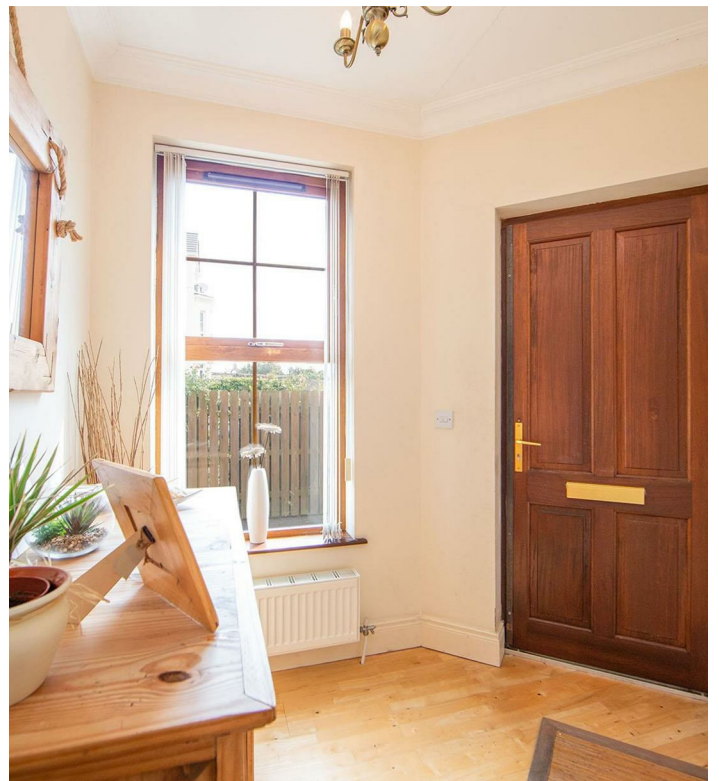


APARTMENT

| 2  | 2  | 2 

Add text here

- Outstanding Ground Floor Apartment
- Stunning Views of Donaghadee Sound, Irish Sea, Copeland Islands and Beyond
- Bright, Spacious and Versatile Accommodation
- Living Room with Stunning Views and Double Glazed Sliding Patio Door to Garden
- Dining Room with Views to Donaghadee Sound, Copeland Islands and Beyond
- Fitted Kitchen with Range of Units
- Two Bedrooms, Both with Cornice Ceiling, Main Bedroom with En Suite Shower Room
- Bathroom with Three Piece White Suite
- Phoenix Gas Heating
- Double Glazed Windows



ROOM DETAILS

Ground Floor

BATHROOM:

RECEPTION

Outside

HALL:

LIVING ROOM:

(15'2" x 13'11")

DINING ROOM:

(10'4" x 8'4")

KITCHEN:

(9'9" x 6'9")

BEDROOM (1):

(14'5" x 12'11")

SHOWER ROOM:

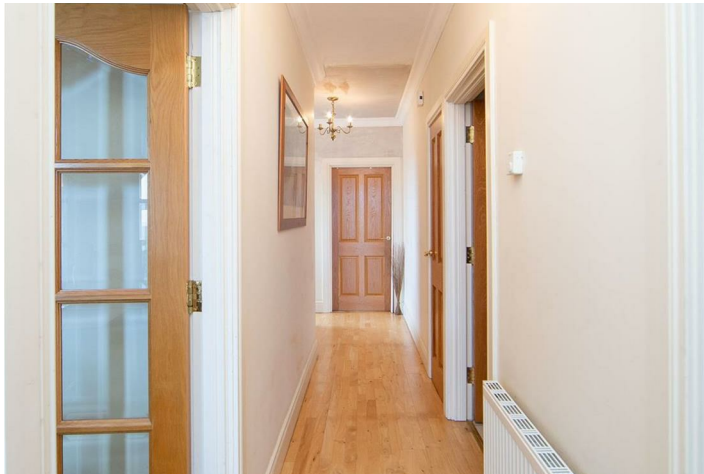
BEDROOM (2):

(10'0" x 8'4")

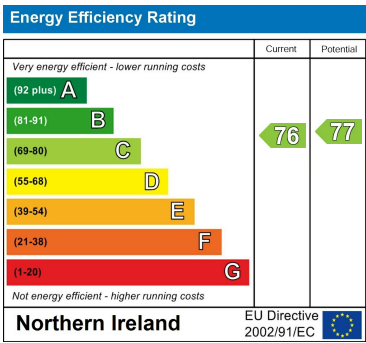


DIRECTIONS

Heading into Donaghadee along Warren Road 67A is on your left just opposite the golf course.



THE LOCAL AREA



Scan QR code for more details and to arrange a viewing.

OUR BRANCHES

B' FAST (028) 9065 3333 H'WOOD (028) 9042 8888 BANGOR (028) 9131 3833 D'DEE (028) 9188 8881 COMBER (028) 9187 1212

property@johnminnis.co.uk JOHNMINNIS.CO.UK

