



35 BEXLEY PARKS

BANGOR BT19 7UT

Offers Around

£199,950

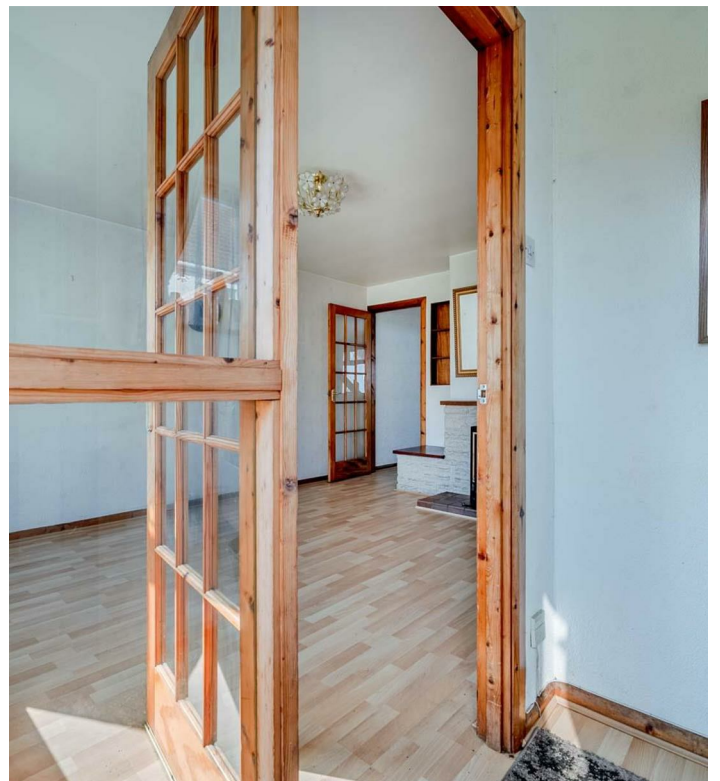


HOUSE - DETACHED

| 3  | 1  | 2 

Add text here

- Detached Property with No Onward Chain
- Popular Sought After Residential Area
- Property Requires Sympathetic Updating but Offers Huge Potential
- Living Room with Fireplace and Glass Fronted Fire
- Kitchen with Casual Dining Area and Access onto the Rear Garden
- Three Bedrooms Including Main Bedroom with Double Built-in Wardrobe
- Bathroom with Three Piece Suite
- Additional Downstairs WC
- Phoenix Gas Heating
- uPVC Double Glazed Windows



ROOM DETAILS

Entrance

*ENCLOSED
ENTRANCE
PORCH:*

LIVING ROOM:
(14'9" x 14'7")

*KITCHEN WITH
CASUAL DINING
AREA:*
(14'7" x 9'5")

*DOWNSTAIRS
WC:*

LANDING:

BEDROOM (1):
(12'9" x 8'3")

BEDROOM (2):
(9'5" x 8'5")

BEDROOM (3):
(11'9" x 6'0")

BATHROOM:

Outside

GARAGE:

Outside.

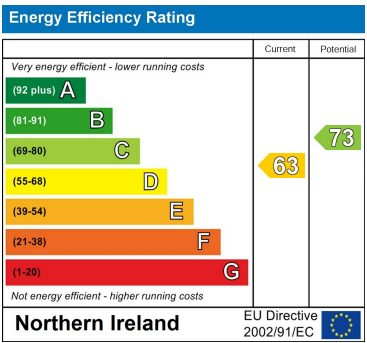


DIRECTIONS

Heading along Bexley Road in the direction of Gransha Road turn right into Bexley Parks.



THE LOCAL AREA



Scan QR code for more details and to arrange a viewing.

OUR BRANCHES

B' FAST (028) 9065 3333 H'WOOD (028) 9042 8888 BANGOR (028) 9131 3833 D'DEE (028) 9188 8881 COMBER (028) 9187 1212

property@johnminnis.co.uk

JOHNMINNIS.CO.UK

