



147 DARRAGH ROAD

NEWTOWNARDS BT23 5JL

---

*Offers Around*

**£149,950**



HOUSE - TERRACED | 3  | N/G  | 2 

Add text here

- Delightful Mid Terrace Property Offering Generous Family Living Accommodation Perfect for a Growing Family
- Comber is a Charming Market Town With Strong Sense of Community
- Close to Many Local Amenities Including Schools, Shops, Restaurants, Churches and Leisure Facilities
- Offers Ease of Access to Belfast and Surrounding Towns via Good Road and Transport Links
- Strangford Lough is Close by Offering Nature Lovers Access to Scenic Walks and Many Outdoor Activities
- Family Lounge with Feature Electric Fire
- Kitchen with Range of Low and High Level Units and Access to Utility Area
- Separate Dining Room with Outlook Over the Rear Garden
- Three Well Proportioned Bedrooms
- Family Bathroom / WC





## ROOM DETAILS

### *Entrance*

### *ENTRANCE*

### *HALLWAY*

(4'11" x 8'1")

### *FAMILY LOUNGE*

(14'6" x 13'0")

### *KITCHEN*

(9'4" x 13'1")

### *UTILITY ROOM*

(9'3" x 8'1")

### *LANDING*

### *BEDROOM (1)*

(11'11" x 11'11")

### *BEDROOM (2)*

(10'6" x 9'3")

### *BEDROOM (3)*

(8'10" x 12'10")

### *BATHROOM*

(5'6" x 5'3")

### *SEPARATE WC*

### *GARAGE*

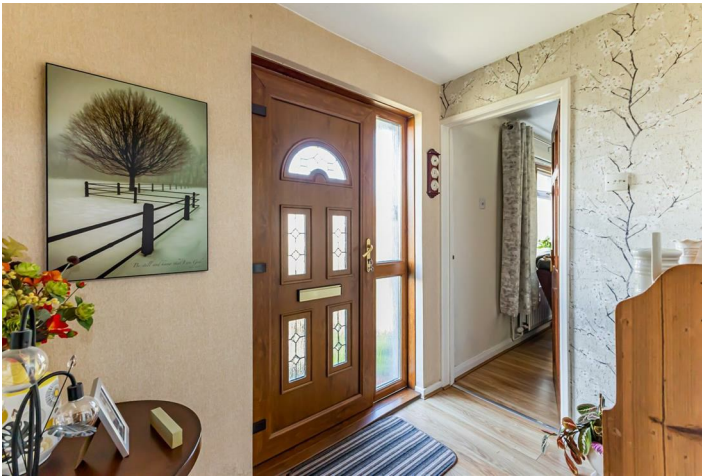
### *Outside*



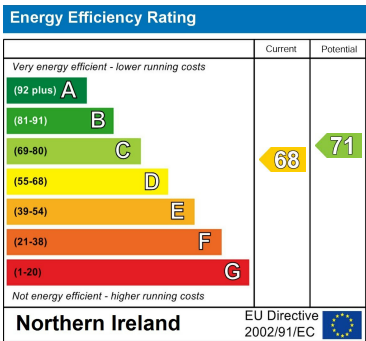


DIRECTIONS

From Comber Square head along Bridge Street, turn left up Darragh Road, number 147 will be on your right-hand side.



THE LOCAL AREA



Scan QR code for more details and to arrange a viewing.

OUR BRANCHES

B' FAST (028) 9065 3333 H'WOOD (028) 9042 8888 BANGOR (028) 9131 3833 D'DEE (028) 9188 8881 COMBER (028) 9187 1212

property@johnminnis.co.uk JOHNMINNIS.CO.UK



These particulars do not constitute any part of an offer or contract. None of the statements contained in these particulars are to be relied on as statements or representations of fact and intending purchasers must satisfy themselves by inspection or otherwise to the correctness of each of the statements contained in these particulars. The vendor does not make or give, neither John Minnis, nor any person in its employment any authority to make or give, any representation or warranty whatever in relation to the property. All dimensions are taken to the nearest 3 inches.