



**7 OGLES GROVE,  
HILLSBOROUGH BT26 6RS**

**OFFERS AROUND  
£650,000**



We are delighted to bring this truly outstanding Hillsborough home to the market. Set within the prestigious Ogles Grove development, no 7 is an extended family home just a short walk or drive from the centre of the village and its renowned amenities including award winning pubs and restaurants, shops and boutiques, churches, Hillsborough Castle and forest park.

Hillsborough enjoys an enviable location with fantastic road access via the A1 toward Newry and Dublin, and the nearby Sprucefield junction of the M1 for those travelling to Belfast or Craigavon.

The ground floor accommodation in brief comprises porch, reception hall, 3 reception rooms, a spacious kitchen, dining and family room with bi-fold doors to the rear garden, utility and WC.

There is an attached double garage, to the rear of which is a large multi functional room, with another WC off, which could be used as a home gym, office, or games room, again with patio doors to the rear garden.

At first floor is a spacious landing and 4 bedrooms, 2 with en-suite shower and dressing rooms, and a luxury main bathroom.

7 Ogles Grove has everything you would expect of a home of this calibre, and more. The large landscaped site has excellent parking in tarmac and pavior finishes and the garden is mostly level with lawn and patio areas with direct access to the rear from the lounge, open plan kitchen and dining area, and the games room.

The property has oil fired heating which is complemented by double glazing in mostly PVC frames

This excellent family home is certain to impress the most discerning of purchasers and interested parties should contact Falloon Estate Agents as soon as possible.

## **GROUND FLOOR :**

### **Entrance porch**

Mahogany effect PVC glazed double doors and windows. Tiled floor. Single panelled radiator.

Glazed screen with mahogany panelled door to entrance hall.



## Entrance hall

Oak flooring. Cornice. Contemporary vertical radiator. Glazed screen to dining room. Cloaks cupboard. Stairs to first floor level with half landing, mahogany balustrade.



## Lounge

4.97m x 5.51m (16' 4" x 18' 1")

Feature carved hardwood fireplace with marble and granite inset and hearth. Open fire. Ceiling cornice. 2 double panelled radiators. Triple aspect glazing with double french doors to rear garden.





## Dining Room

3.47m x 4.93m (11' 5" x 16' 2")

Cornice. Double panelled radiator.



## Kitchen/Dining/Family

3.83m x 8.66m (12' 7" x 28' 5")

Good range of high and low level units in cream finish. Corian worktop, sink and drainer, upstands and splashback. Integrated double oven. Ceramic hob with extractor over. 'Butchers block' island unit.

Dishwasher. 'Samsung' american style fridge/freezer. Inset lighting. Bifold doors to patio area.







## Utility Room

1.77m x 4.16m ( 5' 10" x 13' 8")

Range of fitted cupboards. Stainless steel sink unit, mixer tap. Plumbed for washing machine. Space for tumble dryer. Tiled floor. Single panelled radiator. Alarm control panel. Door to garage.



## Family room

4.02m x 4.34m (13' 2" x 14' 3")

Feature stone fireplace with slate tiled inset and stove. Granite hearth. Dual aspect windows. Double panelled radiator.



## WC

Low flush WC and wash hand basin.



## FIRST FLOOR:

### Landing

Spacious landing with good natural light. 3 storage cupboards. Double panelled radiator.

### Bedroom 1

3.85m x 5.13m (12' 8" x 16' 10")

Double panelled radiator. Spot lights.

### En-suite

1.87m x 3.36m (6' 2" x 11' )

Large walk in shower with glass screen and dual rain head and hand held showers. Wash hand basin on vanity, mixer tap. Low flush WC. Chrome towel radiator. Spot lights. Extractor fan. Co-ordinated wall and floor tiling. Velux window. Single panelled radiator.

### Dressing room

1.85m x 3.17m (6' 1" x 10' 5")

Tiled floor. Double panelled radiator. Velux window.





## Bedroom 2

3.61m x 4.94m (11' 10" x 16' 2")

Excellent range of fitted bedroom furniture including wardrobes, drawers and headboard. Spot lights.

Double panelled radiator. Open to dressing area.

## Dressing area

1.78m x 2.5m (5' 10" x 8' 2")

Range of fitted cupboards. Wash hand basin on vanity, mixer tap. Spot lights. Single panelled radiator.

## En-suite

1.78m x 2.4m (5' 10" x 7' 10")

Shower enclosure with mixer shower. Wash hand basin on vanity, mixer tap. . Low flush WC. Part tiled walls. Extractor fan. Single panelled radiator.





### Bedroom 3

3.89m x 4.03m (12' 9" x 13' 3")

Single panelled radiator. 2 double built in wardrobes.

### Bedroom 4

2.57m x 3.5m (8' 5" x 11' 6")

Range of fitted office furniture. Spot lights. Single panelled radiator.

Access to roofspace with fitted ladder.





## Bathroom

2.25m x 3.5m (7' 5" x 11' 6")

Modern suite comprising panelled bath with mixer tap and shower fitting. Shower enclosure with panelled walls, dual rain head and hand held showers. Wash hand basin on vanity, mixer tap. Low flush WC.

Co-ordinated wall and floor tiling. Shaver point. Spot lights. Extractor fan. Contemporary heated towel rail.



## Outside

Excellent on site parking for several cars in tarmac and pavior brick finishes.

Gardens to front, side and rear in lawn. Paved patio area and paths.

Mature shrubs. Hedged and fenced boundaries. Outside tap.

## Double garage

5.4m x 6.6m (17' 9" x 21' 8")

Remote controlled electrically operated up and over door. Light and power. Boiler area with oil fired boiler and pressurised water tank.

## Games room

3.57m x 7.17m (11' 9" x 23' 6")

May also be suitable for consulting room/home office or gym. Access from garage. Double panelled radiator. Glazed double hardwood doors to patio. WC off with wash hand basin and low flush WC.

## Required info under Trading Standards Guidance

### TENURE

We have been advised the tenure for this property is freehold, we recommend the purchaser and their solicitor verify the details.

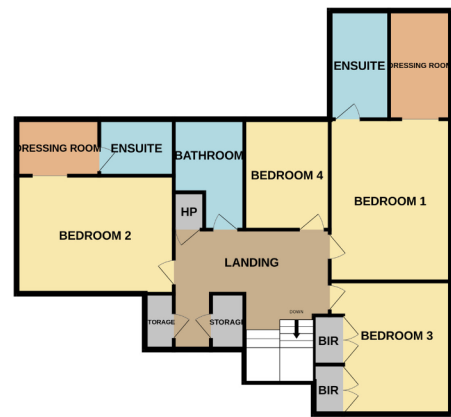
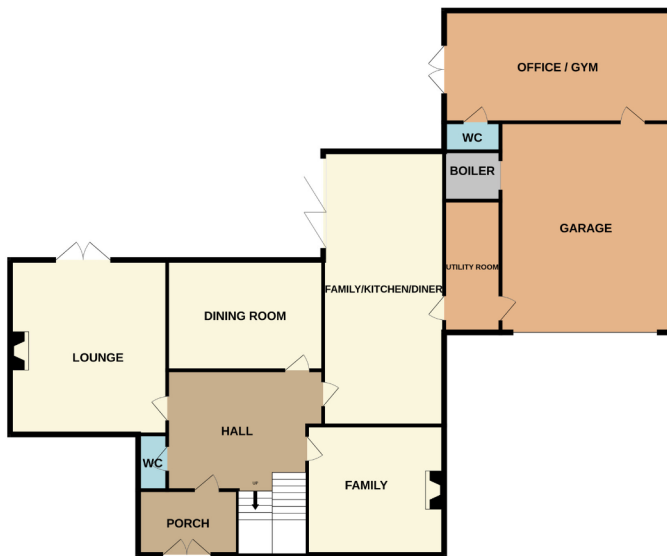
### RATES PAYABLE

Details from the LPSNI website - estimated rates bill £3480.00









Whilst every attempt has been made to ensure the accuracy of the floorplan contained here, measurements of doors, windows, rooms and any other items are approximate and no responsibility is taken for any error, omission or mis-statement. This plan is for illustrative purposes only and should be used as such by any prospective purchaser. The services, systems and appliances shown have not been tested and no guarantee as to their operability or efficiency can be given.  
Made with Metropix ©2025

## VIEWING

By appointment with Agent

## VALUATIONS

Thinking of selling ? We offer FREE, no obligation pre-sale valuations.

## FINANCIAL ADVICE

We offer an independent mortgage advice service. Please contact us for further details.



## ENERGY PERFORMANCE CERTIFICATE

Energy Efficiency Rating		
	Current	Potential
Very energy efficient - lower running costs		
(92+) <b>A</b>		
(81-91) <b>B</b>		
(69-80) <b>C</b>	<b>69</b>	<b>69</b>
(55-68) <b>D</b>		
(39-54) <b>E</b>		
(21-38) <b>F</b>		
(1-20) <b>G</b>		
Not energy efficient - higher running costs		
<b>Northern Ireland</b>	EU Directive 2002/91/EC	

The energy efficiency rating is a measure of the overall efficiency of a home. The higher the rating the more energy efficient the home is and the lower the fuel bills will be.

11 Smithfield Square, Lisburn

BT28 1TH

T : 028 9266 3396

E : admin@falloonestateagents.com

These particulars, whilst believed to be accurate are set out as a general outline only for guidance and do not constitute any part of an offer or contract. Intending purchasers should not rely on them as statements of representation of fact, but must satisfy themselves by inspection or otherwise as to their accuracy. No person in this firm's employment has the authority to make or give any representation or warranty in respect of the property. Dimensions are taken at the widest points and photographs may have been taken using a wide angle lens. Floorplans, if given, are for general guidance only. We have not tested any services in this property and cannot verify their condition. Intending purchasers should make or commission their own reports if necessary

'Falloon' is a trading style of J K Falloon + Co  
Partners : K E Falloon BSc(Hons) MRICS H E Falloon