



2 Cardinal O'Fiaich Square
, Crossmaglen, BT35 9AA

£1,000 Per Calendar Month

2 Cardinal O'Fiaich Square, Crossmaglen, BT35 9AA

Prominent Town Centre Retail Unit

Ground Floor - 589 sq ft (55 sq m)
The unit benefits from a modern fit out, with large upvc frame showroom windows. Internally, the unit comprises ceramic tiled floors, plastered and painted walls. To the rear consists of staff and disabled WC facilities.

First Floor - 355 sq ft (33 sq m)
Two x treatment rooms / offices. WC and kitchen facilities.

Rates: Tenants Responsibility

Previous Occupiers:
Crossmaglen Credit Union
Styling Sisters Salon



Salon
22'7" x 20'8" (6.9 x 6.3)

Kitchen
10'2" x 6'6" (3.1 x 2)

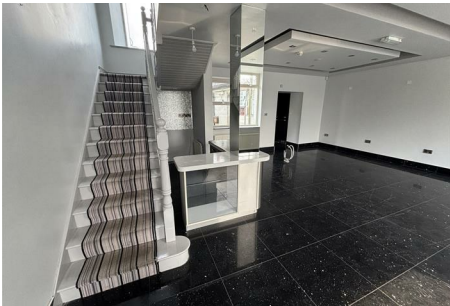
W/C
8'2" x 6'6" (2.5 x 2)

Room 1
10'5" x 14'1" (3.2 x 4.3)

Room 2
10'5" x 7'2" (3.2 x 2.2)

Upstairs Kitchen
10'2" x 9'6" (3.1 x 2.9)

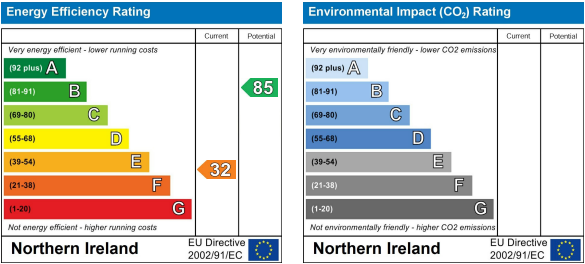
Upstairs W/C
5'2" x 6'6" (1.6 x 2)



Area Map



Energy Efficiency Graph



These particulars, whilst believed to be accurate are set out as a general outline only for guidance and do not constitute any part of an offer or contract. Intending purchasers should not rely on them as statements of representation of fact, but must satisfy themselves by inspection or otherwise as to their accuracy. No person in this firms employment has the authority to make or give any representation or warranty in respect of the property.