

independent  
homes

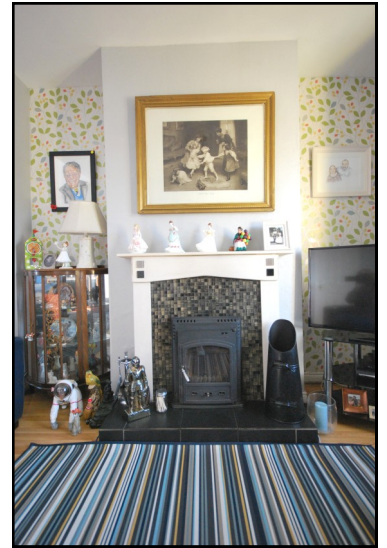


19 portland road  
larne

tel 028 28276060

[www.independenthomes.eu](http://www.independenthomes.eu)





£99,950







## we love the harbour area

This beautiful four bedroom house, at an amazing price  
Just a short distance to primary school, beach, parks promenade,  
leisure centre, shopping and off course transport routes

### ENTRANCE HALL

### RECEPTION ROOM DINING ROOM

Beautifully presented. Laminate flooring

### KITCHEN

Creamy country style kitchen. Integrated oven and hob .

Co ordinating floor and wall tiles.

### ULILITY ROOM

Range of units and shelving. Plumbed for washer/dryer etc.

### FIRST FLOOR

### SHOWER ROOM

White Suite

### BEDROOM

Lovely room full of sunlight.

### BEDROOM

### TOP FLOOR

### BEDROOM

### BEDROOM

22'0" x 11'9" ( 6.70m x 3.58m )

11'1" x 8'0" ( 3.37m x 2.5m )

8'0" x 6'5" ( 2.45m x 1.95m )

8'2" x 8'1" ( 2.50m x 2.46m )

14'8" x 11'5" ( 4.48m x 3.48 )

10'7" x 9'1" ( 3.22m x 2.78m )

14'8" x 11'4" ( 4.48m x 3.46m )

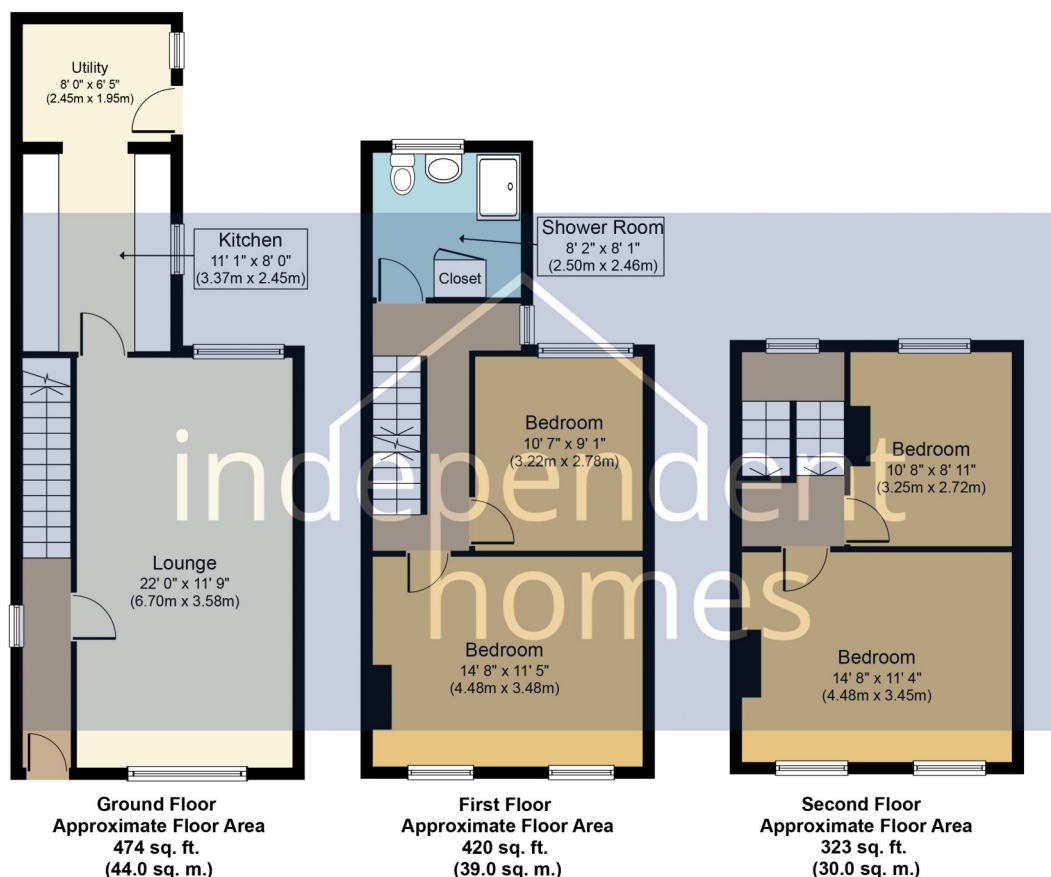
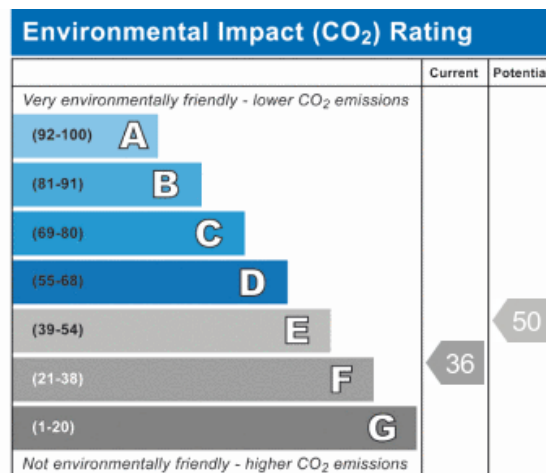
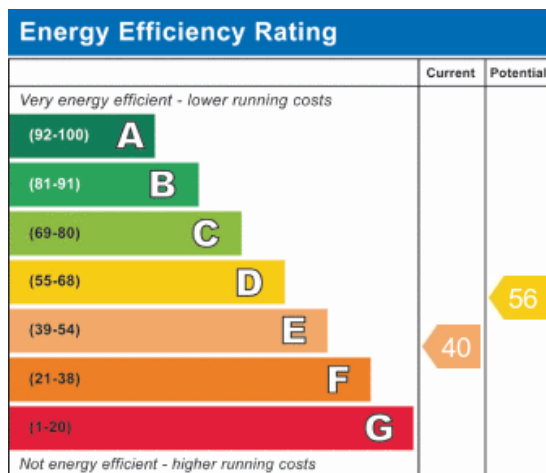
10'8" x 8'11" ( 3.25m x 2.72m )

Oil Heating

Garden to front and rear. Pretty decking area

We loved this house. A traditional style property but thoughtfully refurbished and full of character.

# independent homes



**Approx. Gross Internal Floor Area 1,216 sq. ft. (113.0 sq. m.)**

Whilst every attempt has been made to ensure the accuracy of the floor plan contained here, measurements of doors, windows, rooms and any other items are approximate and no responsibility is taken for any error, omission, or mis-statement. This plan is for illustrative purposes only and should be used as such by any prospective purchaser or tenant. The services, systems and appliances shown have not been tested and no guarantee as to their operability or efficiency can be given.

Copyright V360 Ltd 2019 | [www.houseviz.com](http://www.houseviz.com)

