



14 GRAND COURT, HILDEN, LISBURN, BT27 4AR

- An Excellent First Floor Apartment Situated Within This Small Cul De Sac Location
- Entrance Hall With Mahogany Effect PVC Double Glazed Entrance Door
- Lounge/Dining Area With Open Plan To Kitchen
- Kitchen With Private Outlook
- One Bedroom With Built In Robe And Private Outlook
- Bathroom With White Suite And Aqualisa Shower Plus Heated Towel Rail
- Store Room With Light And Window
- PVC Double Glazed Windows And Entrance Door

PRICE: OFFERS IN THE REGION OF £64,950

VIEWING BY APPOINTMENT THROUGH AGENTS

ENERGY EFFICIENCY RATING D68

REF:GNI5I0I9HG

- Economy 7 Heating
- Communal Carparking Area

ACCOMMODATION

Measurements are approximate

ENTRANCE HALL:

Mahogany effect PVC double glazed entrance door. Circular porthole window. Stairs leading to first floor.

FIRST FLOOR

LOUNGE/DINING AREA:

12' 4" x 9' 9" (3.75m x 2.98m)

Economy 7 storage heater. Open plan to kitchen.



KITCHEN:

9' 9" x 4' 11" (2.98m x 1.50m)

Range of high and low level units. Round edge work surfaces. Single drainer stainless steel sink unit. Part tiled walls. Plumbed for washing machine. Tiled floor. Private outlook.



BEDROOM (1):

12' 10" x 8' 2" (3.90m x 2.50m)

Measurement to include built in robe and hotpress. Economy 7 storage heater. Private outlook.



BATHROOM:

White suite. Panelled bath. Aqualisa electric shower. Floating wash hand basin with mono style mixer tap. Low flush wc. Heated towel rail.



STORE ROOM:

Window and light.

OUTSIDE

Communal car parking area.

SERVICE CHARGE:

At present, there is a service charge of £53 per month, this includes buildings insurance, communal maintenance/repairs and ground rent, we recommend the purchaser and their solicitor confirm the charge and inclusions.



DIRECTIONS

From Grand Street turn into Grand Court, number 14 is at the end of the cul de sac.

Please note we have not tested any systems in this property, we recommend the purchaser checks all systems are working prior to completion.

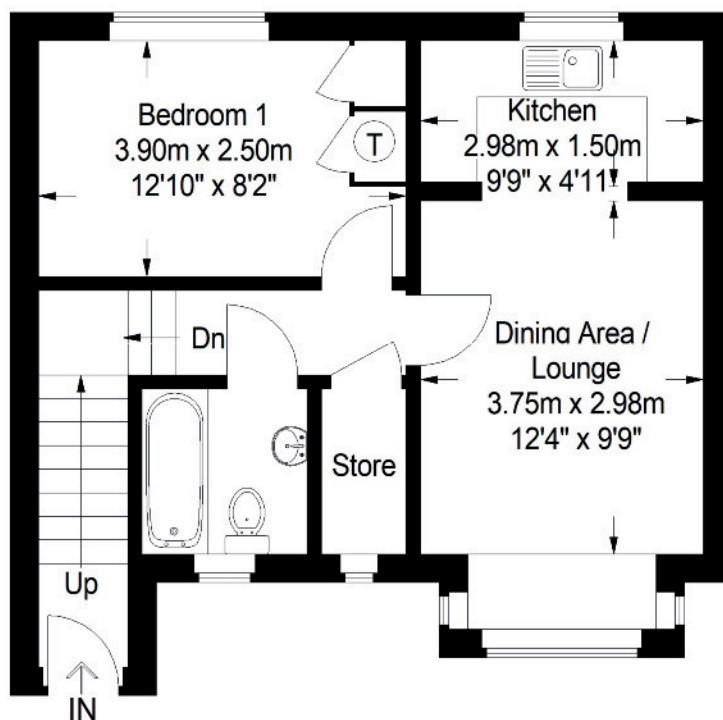
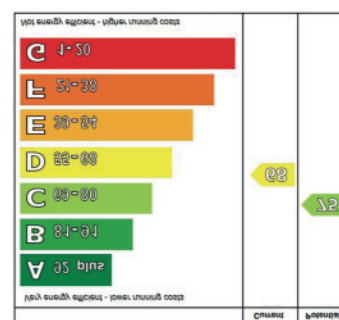


Illustration for identification purposes only, measurements are approximate, not to scale.
FloorplansUsketch.com © 2019 (ID 594160)



VALUATION SERVICE

We can arrange a **FREE** pre sale valuation of your property at a time to suit you.

www.hgraham.co.uk

58-60 Bachelors Walk, Lisburn, Co. Antrim BT28 1XN T: 028 9267 2929 E: info@hgraham.co.uk

The above details do not constitute any part of an offer or contract. None of the statements contained in this sales brochure is to be relied on as statements or representations of fact and any intending purchaser must satisfy himself by inspection or otherwise as to their correctness. Neither the vendor, nor Henry Graham Estate Agents, nor any person employed in the company has any authority to make or give any representation or warranty whatsoever in relation to this property. All dimensions are approximate and are taken at widest points.