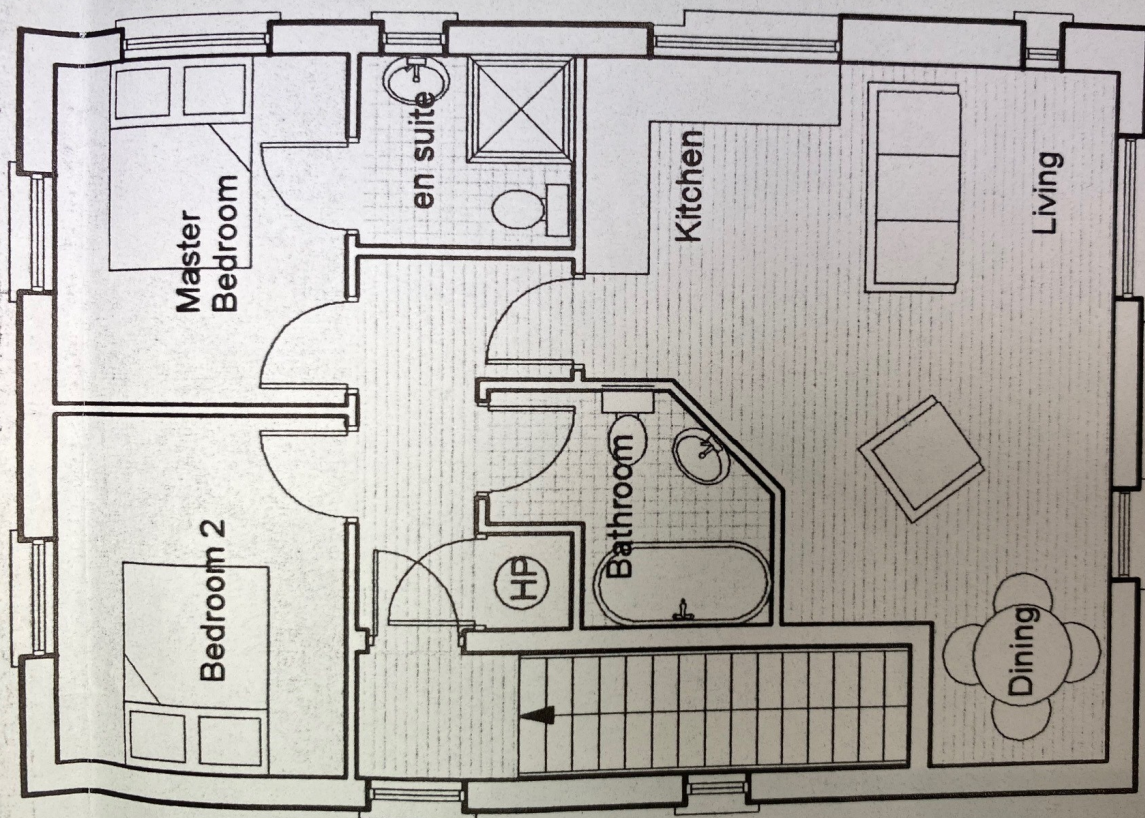
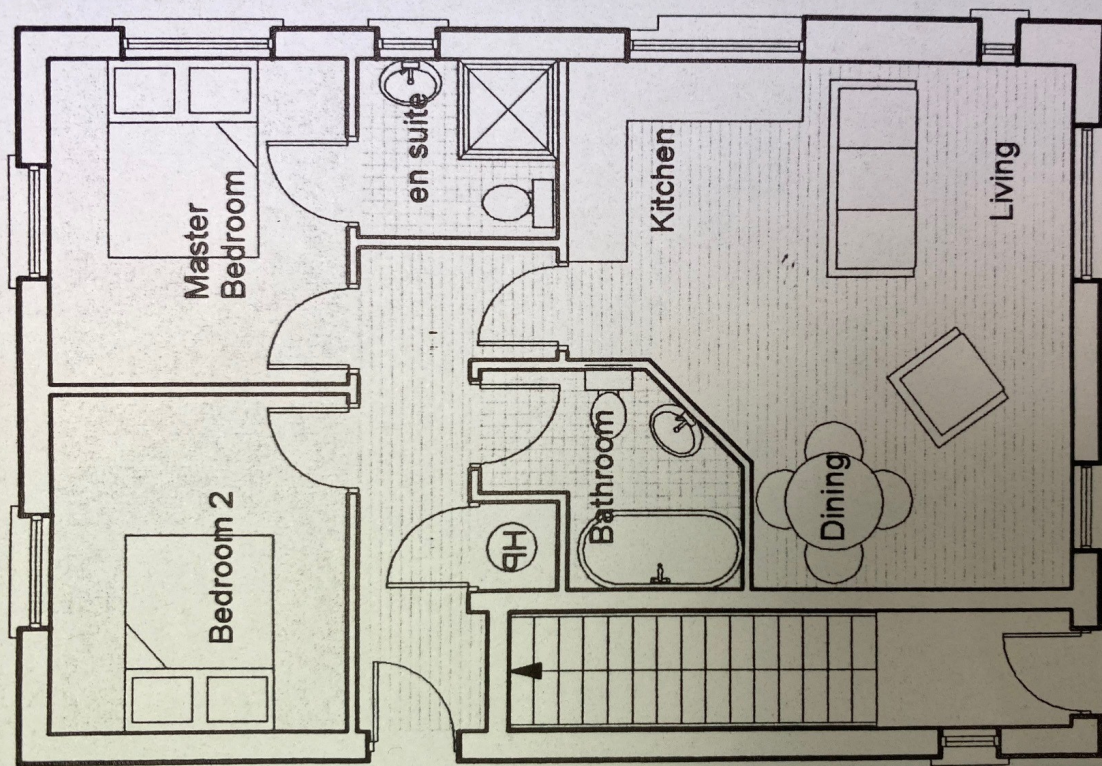




Site adj. to 20 Charles Drive | Ballyclare, BT39 9BX

OFFERS OVER £40,000

- Site with full planning permission for two apartments
- Planning reference U/2004/0671/F
- Planning held live & valid by building control inspection dated 12/2/2010
- Planning provides for 2No. Two bedroom apartments extending to approx. 675 sq ft each
- Convenient location
- Early enquiry highly recommended!



These particulars do not constitute any part of an offer or contract. None of the statements contained in these particulars are to be relied on as statements or representations of fact and intending purchasers must satisfy themselves by inspection or otherwise to the correctness of each of the statements contained in these particulars. The Vendor does not make or give, neither Hunter Campbell, nor any person in its employment has any authority to make or give, any representation or warranty whatever in relation to this property. All dimensions are taken to nearest 3 inches.