



485 Lisburn Road, Belfast, BT9 7EZ
Tel: 02890 661111
Email: info@fetherstons.com
Web: www.fetherstons.com

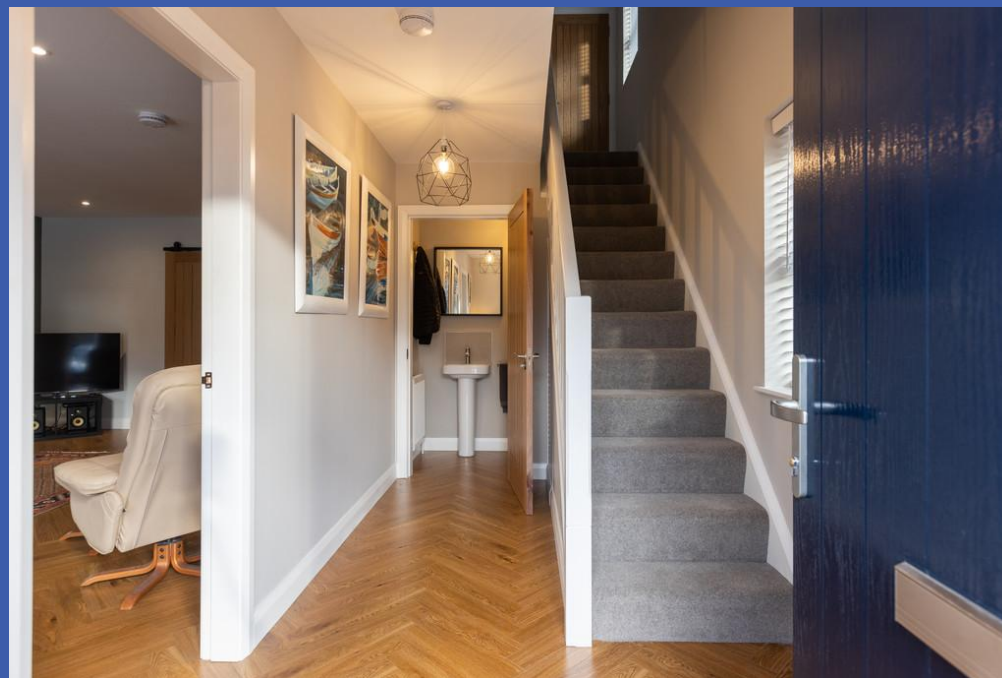
Box Cottage, 51 Roughfort Road

Newtownabbey
BT36 4RE

Offers In Region Of £285,000

BOX COTTAGE, 51 ROUGHFORT ROAD, BT36 4RE

- **Attractive Recently Constructed Detached Cottage**
- **Three Bedrooms (Master Ensuite)**
- **Lounge With Feature Contemporary Wood Burning Stove**
- **Kitchen With Dining Area And Modern Fully Fitted Kitchen**
- **Family Bathroom With Contemporary Suite**
- **Ground Floor WC/Cloakroom**
- **Oil Fired Central Heating / Double Glazed Windows**
- **Enclosed Rear Patio Garden / Driveway With Parking For Three Cars**
- **High Standard Of Decor Throughout**
- **Convenient Location Close To Mallusk And M2 Motorway For Commuters**



We are delighted to present this superb recently constructed detached property to market. Located in the picturesque village of Roughfort on the fringes of Mallusk this charming home is sure to have broad market appeal. The location offers ease of access for those travelling to Belfast and North to Antrim and Ballymena via the M2 Motorway.

This bright deceptively spacious home enjoys beautifully presented accommodation throughout with tasteful internal decor.

The ground floor accommodation is beautifully laid out with an open plan configuration. It comprises of a lounge with feature contemporary wood burning stove and sliding doors opening to the modern fully fitted kitchen and dining area with a range of integrated appliances plus a separate utility room off the kitchen.

On the first floor are three well proportioned bedrooms (master ensuite) and bathroom with contemporary white suite. This property exudes character and charm and can only fully be appreciated upon viewing.

The rear enclosed patio garden offers the perfect space to enjoy a BBQ and relax. To the front is a driveway with parking for three cars.





PROPERTY COMPRISES

Composite entrance door, leading to reception hall.

ENTRANCE HALL Herringbone flooring, under stairs storage cupboard, stairs to first floor.

WC / CLOAKROOM Low flush WC, pedestal wash hand basin, tiled splashback, herringbone flooring, extractor fan.

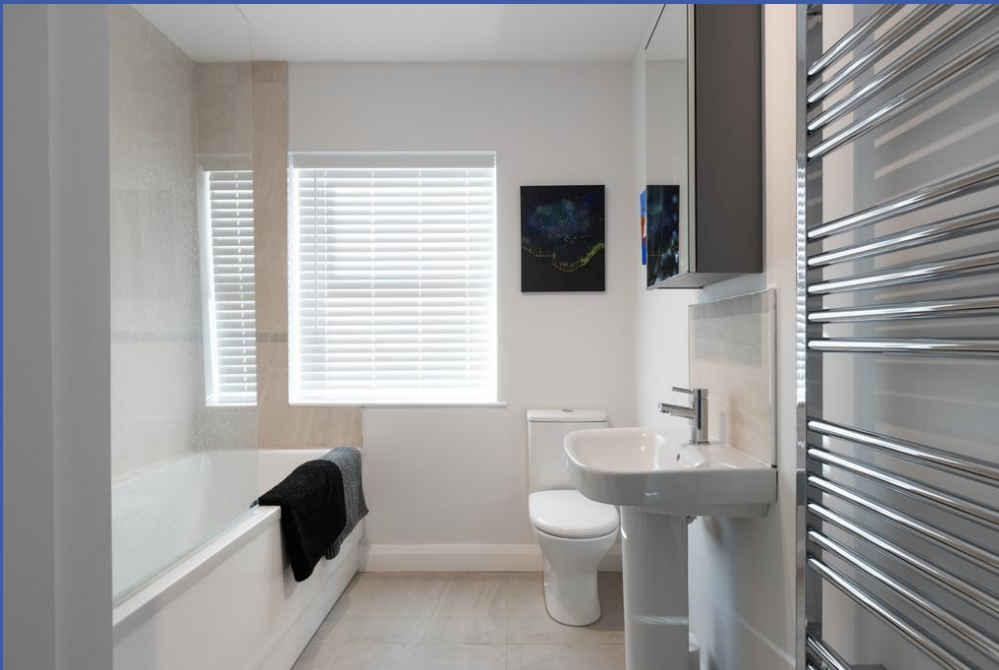
LOUNGE 19' 10" x 14' 9" (6.05m x 4.5m) Herringbone flooring, recessed low voltage spotlights, 9kw integrated contemporary wood burning stove, feature sliding doors leading to...

KITCHEN / DINING 16' 10" x 12' 9" (5.15m x 3.89m) Range of fitted high and low level units, marble effect work surfaces, tiled splashback, 1.5 bowl stainless steel single drainer sink unit with mixer taps, integrated 4 ring induction hob, integrated eye level oven, integrated dishwasher, integrated fridge, integrated freezer, recessed low voltage spotlights, herringbone flooring, patio door to rear garden.

UTILITY ROOM 9' 11" x 3' 11" (3.04m x 1.2m) Range of low level fitted units, marble effect work surfaces, single drainer stainless steel sink unit with mixer taps, tiled splashback, herringbone flooring.

FIRST FLOOR LANDING Access to roof space, airing cupboard with shelving.





MASTER BEDROOM 13' 9" x 12' 8" (4.2m x 3.88m)

ENSUITE Suite comprising of enclosed shower cubicle, low flush WC, pedestal wash hand basin, stainless steel towel radiator, tiled splashback, tiled floor, extractor fan, recessed low voltage spotlights.

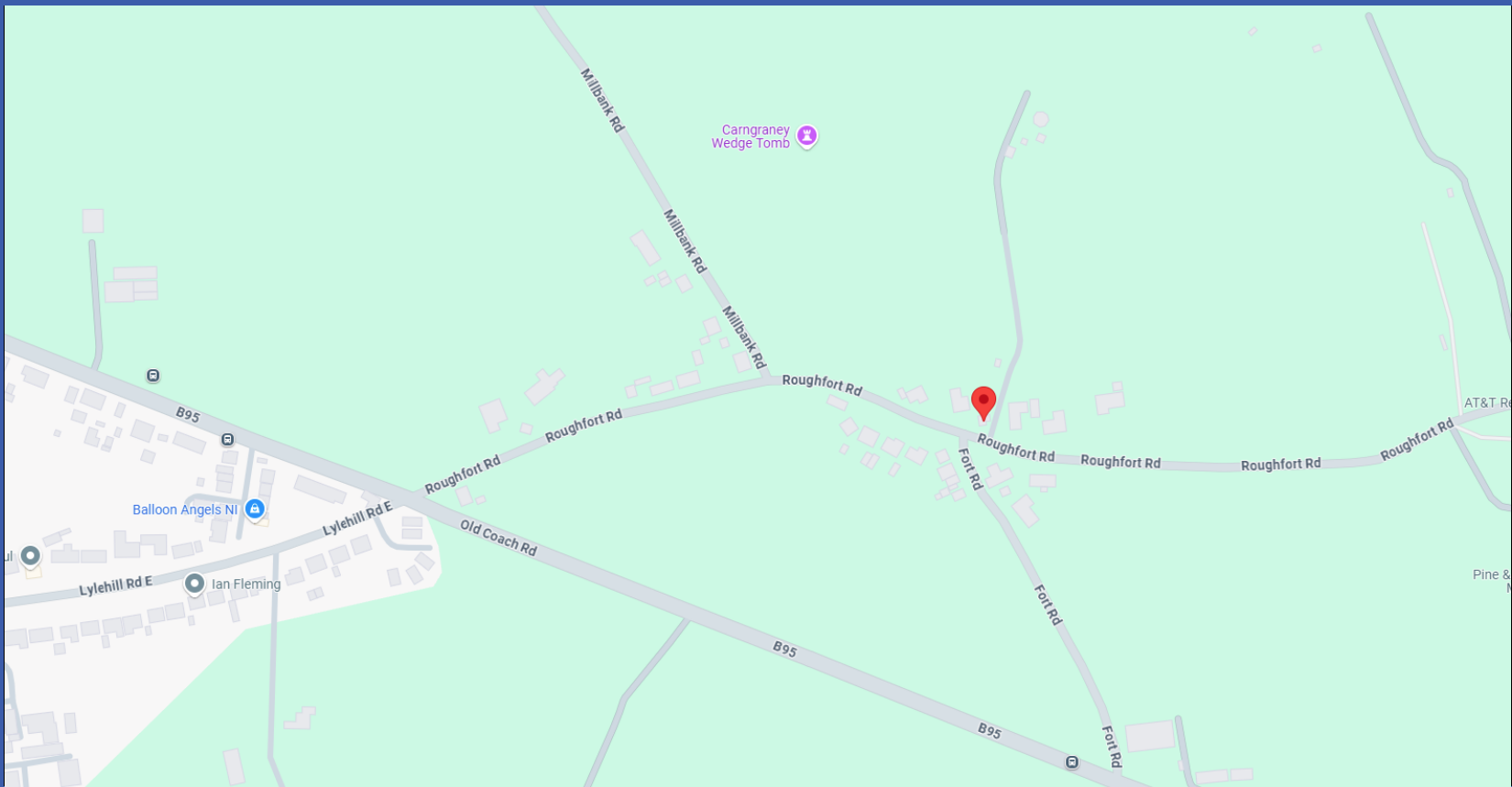
BATHROOM Suite comprising of a panelled bath with Mira shower unit, low flush WC, pedestal wash hand basin, tiled splashback, tiled floor, stainless steel towel radiator, storage cupboard.

BEDROOM 2 14' 5" x 11' 5" (4.41m x 3.49m)

BEDROOM 3 14' 5" x 8' 0" (4.41m x 2.44m)

OUTSIDE Driveway with car parking for three cars. Enclosed rear patio garden, paved patio area, uPVC oil tank, traditional corrugated large shed.





Score	Energy rating	Current	Potential
92+	A		
81-91	B	85 B	85 B
69-80	C		
55-68	D		
39-54	E		
21-38	F		
1-20	G		



Fetherstons Estate Agents for themselves and for the Vendors or Lessors of the property whose agents they are give notice that; i) these particulars are given without responsibility of Fetherstons or the Vendors or Lessors as a general outline only, for the guidance of prospective purchasers or tenants, and do not constitute the whole or any part of an offer or contract; ii) Fetherstons cannot guarantee the accuracy of any description, dimensions, references to condition, necessary permissions for the use and occupation and other details contained herein and any prospective purchasers or tenants should not rely on them as statements of representation of fact but must satisfy themselves by inspection or otherwise as to the accuracy of each of them; iii) no employee of Fetherstons has authority to make or give any representation or warranty or enter into any contract whatsoever in relation to the property; iv) VAT may be payable on the purchase price and / or rent, all figures are quoted exclusive of VAT, intending purchasers or tenants must satisfy themselves as to the applicable VAT position, if necessary by taking the appropriate professional advice; v) Fetherstons will not be liable in negligence or otherwise, for any loss arising from the use of these particulars; vi) Appliances not tested or verified.