The background image is a photograph of a two-story detached house, likely a semi-detached pair. It has a light-colored brick or stone exterior and a dark roof with a central chimney. The house has multiple windows, some with white frames. A dark-colored car is parked in the driveway on the left side. The entire image is overlaid with a dark teal color and contains white and gold text.

# Cromlyn Wood

LISBURN ROAD  
ROYAL HILLSBOROUGH

## THE MARQUESS

4 BEDROOM DETACHED HOME  
**SITES 2, 3 & 14**  
TOTAL FLOOR AREA 1,905 FT<sup>2</sup> APPROX.

THE MARQUESS  
4 BEDROOM DETACHED HOME

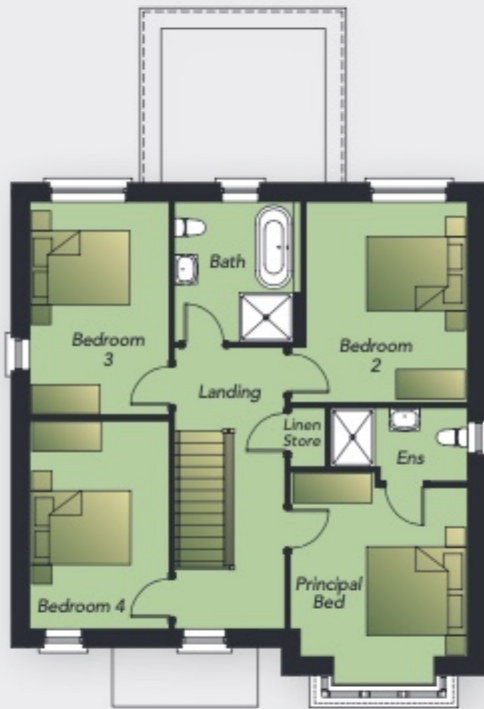
SITES 2, 3 & 14  
TOTAL FLOOR AREA 1,905 FT<sup>2</sup> APPROX.

*Note. Site 14 is a handed version of these plans*



GROUND FLOOR

Entrance Hall	Utility Room	9'1" x 5'7"
Lounge (max)	Garden Room	11'5" x 10'7"
Kitchen / Dining / Living	WC	7'5" x 4'3"
	Cloakroom	4'6" x 3'1"



FIRST FLOOR

Principal Bed (max)	14'1" x 11'8"	Bedroom 4	13'8" x 9'3"
Ensuite (max)	9'1" x 4'9"	Bathroom	9'3" x 7'9"
Bedroom 2	13'3" x 10'7"	Linen Store	3'9" x 2'3"
Bedroom 3	14'2" x 9'3"		





## SITE LAYOUT NOT TO SCALE

In compliance with Consumer Protection from Unfair Trading and Business Protection from Misleading Marketing Regulations, please note that any visual or pictorial representations as featured in this brochure such as 3D computer generated images are purely intended as a guide for illustrative, concept purposes only and often may be subject to change. Any floor plans and site layouts used are not to scale and all dimensions are approximate and subject to change. Also note the brochure does not feature exact location or presence of specific or detailed items such as street lighting, sub stations or full finishes etc. All specific details to your chosen plot or immediate boundaries etc. should be checked with the agent, developer, or your legal advisor prior to purchase.

Copyright notice: All rights reserved. The contents of this brochure may not be reproduced, copied, redistributed, or otherwise made available in whole or part without the prior written consent from the developer.

SALES REPRESENTATION BY



**South Belfast Office**  
525 Lisburn Road, Belfast BT9 7GQ  
Telephone 028 9066 8888  
[www.simonbrien.com](http://www.simonbrien.com)



15 Main Street, Royal Hillsborough BT26 6AE  
Telephone 028 9268 3762  
[www.downshireestateagents.co.uk](http://www.downshireestateagents.co.uk)

  
**Alskea**

[alskea.com](http://alskea.com)

# Cromlyn Wood

LISBURN ROAD  
ROYAL HILLSBOROUGH

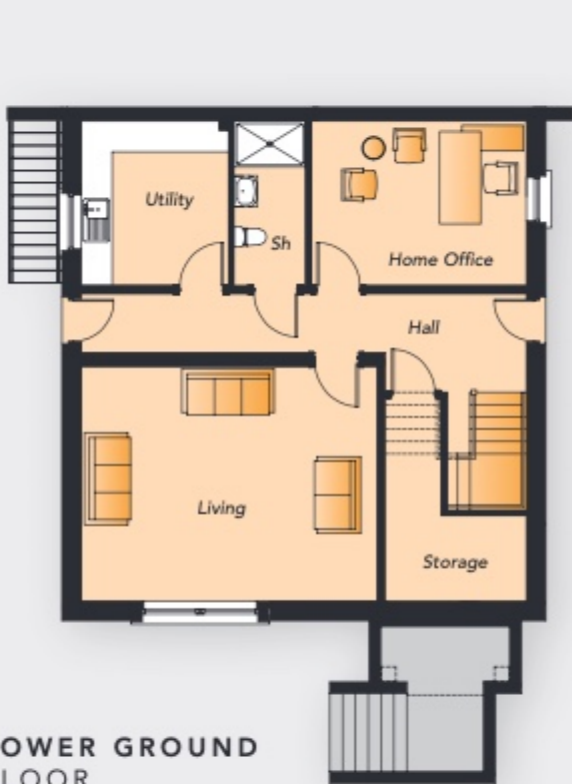
## THE ARTHUR

4 BEDROOM DETACHED HOME  
SITES 4, 5, 7, 8, 10 & 11  
TOTAL FLOOR AREA 2,690 FT<sup>2</sup> APPROX.

THE ARTHUR  
4 BEDROOM DETACHED HOME

SITES 4, 5, 7, 8, 10 & 11  
TOTAL FLOOR AREA 2,690 FT<sup>2</sup> APPROX.

Note. Site 11 is a handed version of these plans.



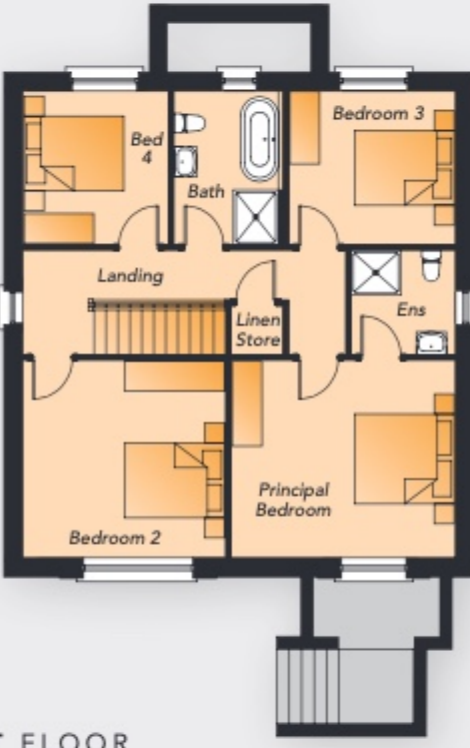
**LOWER GROUND FLOOR**

Living	18'9" x 14'9"
Home Office	13'7" x 10'5"
Utility Room	10'5" x 9'4"
Storage (max)	13'0" x 9'0"
Shower Room	10'5" x 4'5"



**GROUND FLOOR**

Entrance Hall	
Lounge	18'9" x 12'8"
Kitchen /Dining / Snug (max)	28'4" x 18'1"
Pantry	8'8" x 3'2"
WC	7'5" x 3'2"



**FIRST FLOOR**

Principal Bed	14'7" x 13'0"
Ensuite	6'8" x 6'8"
Bedroom 2	13'3" x 13'0"
Bedroom 3	11'0" x 10'1"
Bedroom 4	10'1" x 9'5"
Bathroom	10'1" x 7'2"





## SITE LAYOUT NOT TO SCALE

In compliance with Consumer Protection from Unfair Trading and Business Protection from Misleading Marketing Regulations, please note that any visual or pictorial representations as featured in this brochure such as 3D computer generated images are purely intended as a guide for illustrative, concept purposes only and often may be subject to change. Any floor plans and site layouts used are not to scale and all dimensions are approximate and subject to change. Also note the brochure does not feature exact location or presence of specific or detailed items such as street lighting, sub stations or full finishes etc. All specific details to your chosen plot or immediate boundaries etc. should be checked with the agent, developer, or your legal advisor prior to purchase.

Copyright notice: All rights reserved. The contents of this brochure may not be reproduced, copied, redistributed, or otherwise made available in whole or part without the prior written consent from the developer.

SALES REPRESENTATION BY



**South Belfast Office**  
525 Lisburn Road, Belfast BT9 7GQ  
Telephone 028 9066 8888  
[www.simonbrien.com](http://www.simonbrien.com)



15 Main Street, Royal Hillsborough BT26 6AE  
Telephone 028 9268 3762  
[www.downshireestateagents.co.uk](http://www.downshireestateagents.co.uk)

**Alskea**

[alskea.com](http://alskea.com)



# Cromlyn Wood

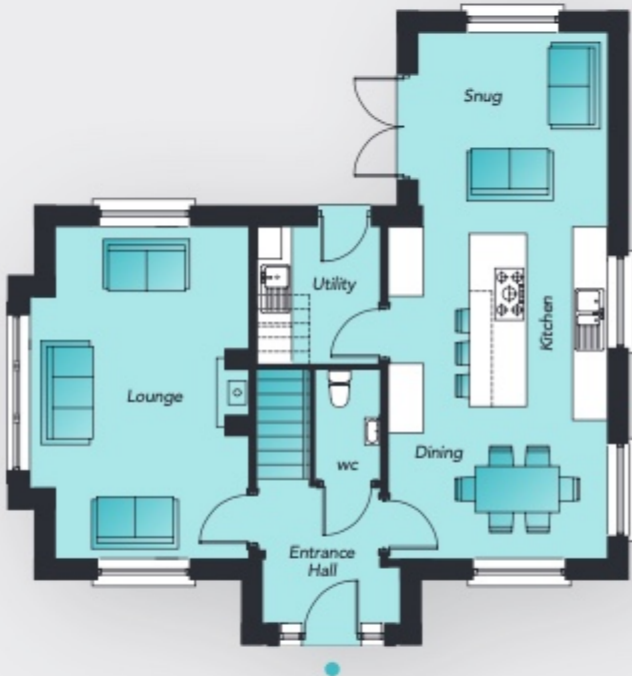
LISBURN ROAD  
ROYAL HILLSBOROUGH

## THE TENNYSON

3 BEDROOM DETACHED HOME  
**SITE 38**  
TOTAL FLOOR AREA 1,356 FT<sup>2</sup> APPROX.

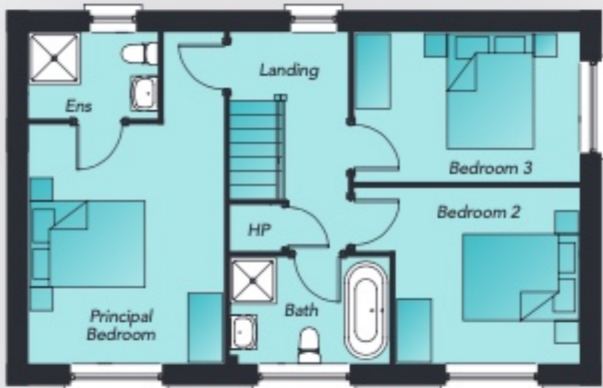
THE TENNYSON  
3 BEDROOM DETACHED HOME

SITE 38  
TOTAL FLOOR AREA 1,356 FT<sup>2</sup> APPROX.



GROUND FLOOR

Entrance Hall		Snug	11'1" x 10'8"
Lounge (max)	18'9" x 12'4"	Utility Room	7'8" x 7'0"
Kitchen / Dining	18'9" x 12'4"	WC	6'4" x 3'7"



FIRST FLOOR

Principal Bed (min)	13'6" x 11'2"	Bedroom 2 (min)	10'5" x 10'0"
Ensuite	7'4" x 4'9"	Bedroom 3	12'9" x 8'5"
		Bathroom	9'1" x 6'1"



Computer Visual



## SITE LAYOUT NOT TO SCALE

In compliance with Consumer Protection from Unfair Trading and Business Protection from Misleading Marketing Regulations, please note that any visual or pictorial representations as featured in this brochure such as 3D computer generated images are purely intended as a guide for illustrative, concept purposes only and often may be subject to change. Any floor plans and site layouts used are not to scale and all dimensions are approximate and subject to change. Also note the brochure does not feature exact location or presence of specific or detailed items such as street lighting, sub stations or full finishes etc. All specific details to your chosen plot or immediate boundaries etc. should be checked with the agent, developer, or your legal advisor prior to purchase.

Copyright notice: All rights reserved. The contents of this brochure may not be reproduced, copied, redistributed, or otherwise made available in whole or part without the prior written consent from the developer.

SALES REPRESENTATION BY



**South Belfast Office**  
525 Lisburn Road, Belfast BT9 7GQ  
Telephone 028 9066 8888  
[www.simonbrien.com](http://www.simonbrien.com)



15 Main Street, Royal Hillsborough BT26 6AE  
Telephone 028 9268 3762  
[www.downshireestateagents.co.uk](http://www.downshireestateagents.co.uk)

**Alskea**

[alskea.com](http://alskea.com)



# Cromlyn Wood

LISBURN ROAD  
ROYAL HILLSBOROUGH

## THE CROSSLEY

3 BEDROOM DETACHED HOME  
SITES 18 & 19  
TOTAL FLOOR AREA 1,356 FT<sup>2</sup> APPROX.

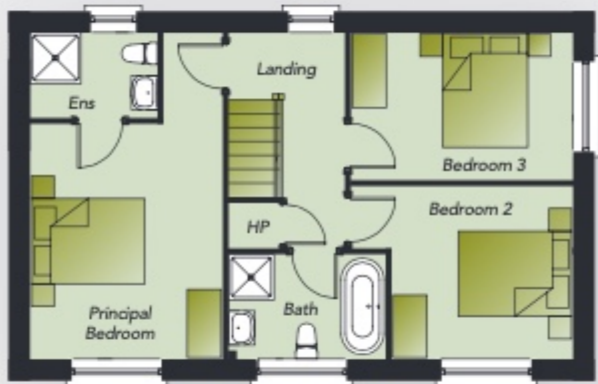
THE CROSSLEY  
3 BEDROOM DETACHED HOME

SITES 18 & 19  
TOTAL FLOOR AREA 1,356 FT<sup>2</sup> APPROX.



GROUND FLOOR

Entrance Hall		Snug	11'1" x 10'8"
Lounge	18'9" x 11'0"	Utility Room	7'8" x 7'0"
Kitchen / Dining	18'9" x 12'4"	WC	6'4" x 3'7"



FIRST FLOOR

Principal Bed (min)	13'6" x 11'2"	Bedroom 2 (min)	10'5" x 10'0"
Ensuite	7'4" x 4'9"	Bedroom 3	12'9" x 8'5"
		Bathroom	9'1" x 6'1"



Computer Visual



## SITE LAYOUT NOT TO SCALE

In compliance with Consumer Protection from Unfair Trading and Business Protection from Misleading Marketing Regulations, please note that any visual or pictorial representations as featured in this brochure such as 3D computer generated images are purely intended as a guide for illustrative, concept purposes only and often may be subject to change. Any floor plans and site layouts used are not to scale and all dimensions are approximate and subject to change. Also note the brochure does not feature exact location or presence of specific or detailed items such as street lighting, sub stations or full finishes etc. All specific details to your chosen plot or immediate boundaries etc. should be checked with the agent, developer, or your legal advisor prior to purchase.

Copyright notice: All rights reserved. The contents of this brochure may not be reproduced, copied, redistributed, or otherwise made available in whole or part without the prior written consent from the developer.

SALES REPRESENTATION BY



**South Belfast Office**  
525 Lisburn Road, Belfast BT9 7GQ  
Telephone 028 9066 8888  
[www.simonbrien.com](http://www.simonbrien.com)



15 Main Street, Royal Hillsborough BT26 6AE  
Telephone 028 9268 3762  
[www.downshireestateagents.co.uk](http://www.downshireestateagents.co.uk)

  
**Alskea**

[alskea.com](http://alskea.com)



# Cromlyn Wood

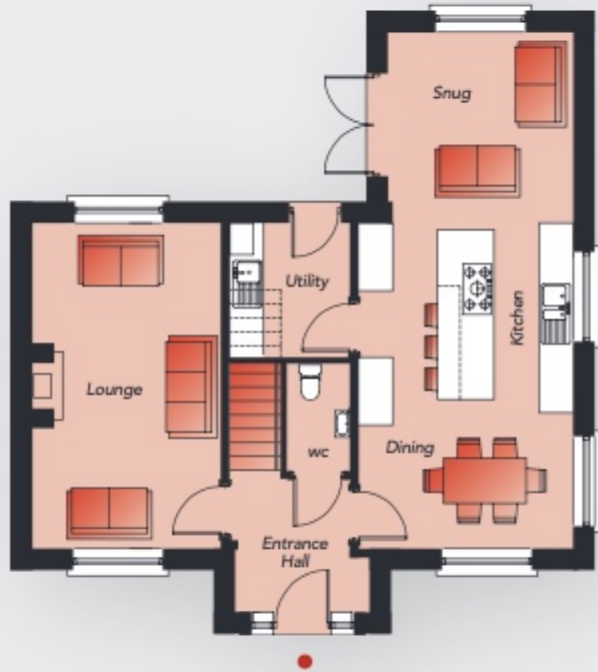
LISBURN ROAD  
ROYAL HILLSBOROUGH

## THE SEYMOUR

3 BEDROOM DETACHED HOME  
**SITE 37**  
TOTAL FLOOR AREA 1,356 FT<sup>2</sup> APPROX.

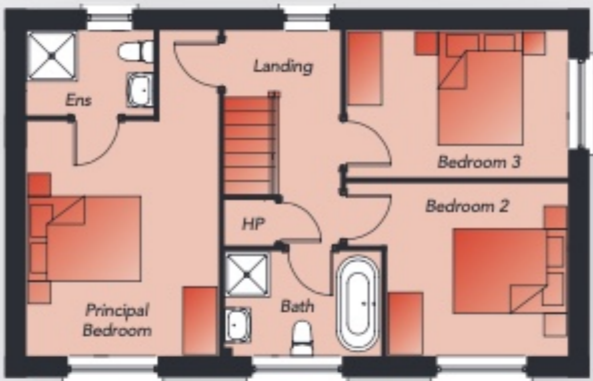
THE SEYMOUR  
3 BEDROOM DETACHED HOME

SITE 37  
TOTAL FLOOR AREA 1,356 FT<sup>2</sup> APPROX.



GROUND FLOOR

Entrance Hall		Snug	11'1" x 10'8"
Lounge	18'9" x 11'0"	Utility Room	7'8" x 7'0"
Kitchen / Dining	18'9" x 12'4"	WC	6'4" x 3'7"



FIRST FLOOR

Principal Bed (min)	13'6" x 11'2"	Bedroom 2 (min)	10'5" x 10'0"
Ensuite	7'4" x 4'9"	Bedroom 3	12'9" x 8'5"
		Bathroom	9'1" x 6'1"



Computer Visual



## SITE LAYOUT NOT TO SCALE

In compliance with Consumer Protection from Unfair Trading and Business Protection from Misleading Marketing Regulations, please note that any visual or pictorial representations as featured in this brochure such as 3D computer generated images are purely intended as a guide for illustrative, concept purposes only and often may be subject to change. Any floor plans and site layouts used are not to scale and all dimensions are approximate and subject to change. Also note the brochure does not feature exact location or presence of specific or detailed items such as street lighting, sub stations or full finishes etc. All specific details to your chosen plot or immediate boundaries etc. should be checked with the agent, developer, or your legal advisor prior to purchase.

Copyright notice: All rights reserved. The contents of this brochure may not be reproduced, copied, redistributed, or otherwise made available in whole or part without the prior written consent from the developer.

SALES REPRESENTATION BY



**South Belfast Office**  
525 Lisburn Road, Belfast BT9 7GQ  
Telephone 028 9066 8888  
[www.simonbrien.com](http://www.simonbrien.com)



15 Main Street, Royal Hillsborough BT26 6AE  
Telephone 028 9268 3762  
[www.downshireestateagents.co.uk](http://www.downshireestateagents.co.uk)

**Alskea**

[alskea.com](http://alskea.com)



# Cromlyn Wood

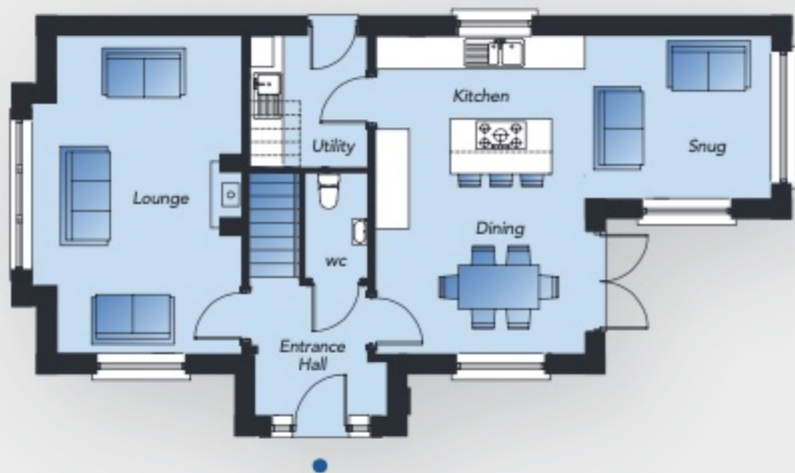
LISBURN ROAD  
ROYAL HILLSBOROUGH

## THE DEANE

3 BEDROOM DETACHED HOME  
SITE 20  
TOTAL FLOOR AREA 1,367 FT<sup>2</sup> APPROX.

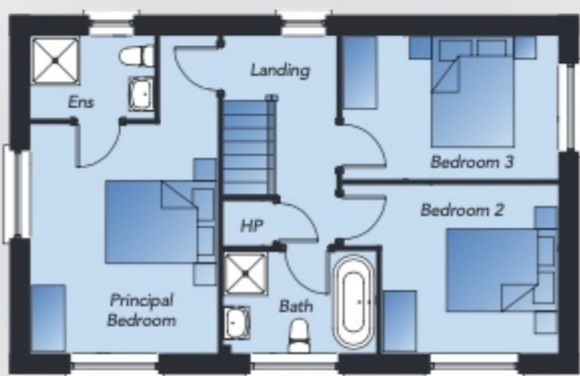
THE DEANE  
3 BEDROOM DETACHED HOME

SITE 20  
TOTAL FLOOR AREA 1,367 FT<sup>2</sup> APPROX.



GROUND FLOOR

Entrance Hall		Snug	11'1" x 9'7"
Lounge (max)	18'9" x 12'4"	Utility Room	7'0" x 7'8"
Kitchen / Dining	18'9" x 12'4"	WC	6'4" x 3'7"



FIRST FLOOR

Principal Bed (max)	13'6" x 11'2"	Bedroom 2 (min)	10'5" x 10'0"
Ensuite	7'4" x 4'9"	Bedroom 3	12'9" x 8'5"
		Bathroom	9'1" x 6'1"



Computer Visual



## SITE LAYOUT NOT TO SCALE

In compliance with Consumer Protection from Unfair Trading and Business Protection from Misleading Marketing Regulations, please note that any visual or pictorial representations as featured in this brochure such as 3D computer generated images are purely intended as a guide for illustrative, concept purposes only and often may be subject to change. Any floor plans and site layouts used are not to scale and all dimensions are approximate and subject to change. Also note the brochure does not feature exact location or presence of specific or detailed items such as street lighting, sub stations or full finishes etc. All specific details to your chosen plot or immediate boundaries etc. should be checked with the agent, developer, or your legal advisor prior to purchase.

Copyright notice: All rights reserved. The contents of this brochure may not be reproduced, copied, redistributed, or otherwise made available in whole or part without the prior written consent from the developer.

SALES REPRESENTATION BY



**South Belfast Office**  
525 Lisburn Road, Belfast BT9 7GQ  
Telephone 028 9066 8888  
[www.simonbrien.com](http://www.simonbrien.com)



15 Main Street, Royal Hillsborough BT26 6AE  
Telephone 028 9268 3762  
[www.downshireestateagents.co.uk](http://www.downshireestateagents.co.uk)

**Alskea**

[alskea.com](http://alskea.com)



# Cromlyn Wood

LISBURN ROAD  
ROYAL HILLSBOROUGH

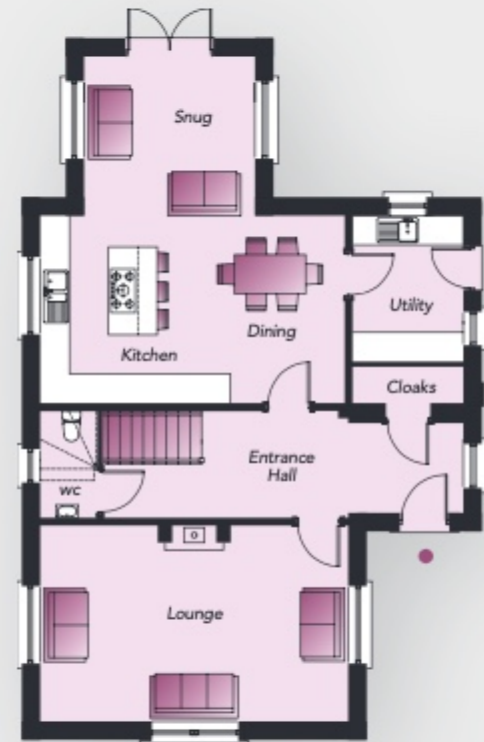
## THE BARBOUR

4 BEDROOM DETACHED HOME  
**SITE 22**  
TOTAL FLOOR AREA 1,760 FT<sup>2</sup> APPROX.

## THE BARBOUR

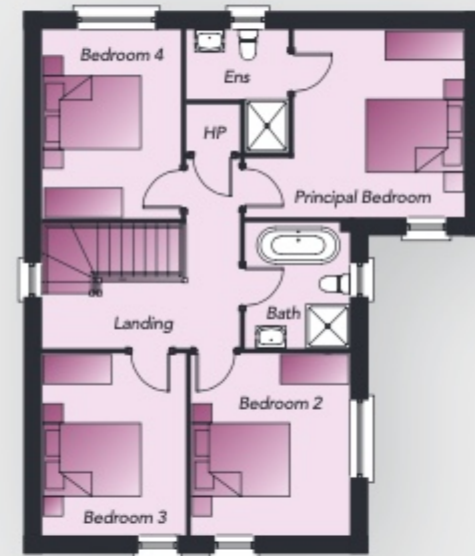
4 BEDROOM DETACHED HOME

SITE 22

TOTAL FLOOR AREA 1,760 FT<sup>2</sup> APPROX.

GROUND FLOOR

Entrance Hall		Snug	11'5" x 10'7"
Lounge	20'7" x 13'2"	Utility Room	9'8" x 7'5"
Kitchen / Dining	20'5" x 12'6"	WC	7'2" x 3'9"



FIRST FLOOR

Principal Bed (min)	12'6" x 11'5"	Bedroom 3	12'2" x 9'7"
Ensuite (max)	8'3" x 6'9"	Bedroom 4	12'7" x 9'4"
Bedroom 2	12'2" x 10'7"	Bathroom	8'5" x 7'1"



Computer Visual



## SITE LAYOUT NOT TO SCALE

In compliance with Consumer Protection from Unfair Trading and Business Protection from Misleading Marketing Regulations, please note that any visual or pictorial representations as featured in this brochure such as 3D computer generated images are purely intended as a guide for illustrative, concept purposes only and often may be subject to change. Any floor plans and site layouts used are not to scale and all dimensions are approximate and subject to change. Also note the brochure does not feature exact location or presence of specific or detailed items such as street lighting, sub stations or full finishes etc. All specific details to your chosen plot or immediate boundaries etc. should be checked with the agent, developer, or your legal advisor prior to purchase.

Copyright notice: All rights reserved. The contents of this brochure may not be reproduced, copied, redistributed, or otherwise made available in whole or part without the prior written consent from the developer.

SALES REPRESENTATION BY



**South Belfast Office**  
525 Lisburn Road, Belfast BT9 7GQ  
Telephone 028 9066 8888  
[www.simonbrien.com](http://www.simonbrien.com)



15 Main Street, Royal Hillsborough BT26 6AE  
Telephone 028 9268 3762  
[www.downshireestateagents.co.uk](http://www.downshireestateagents.co.uk)

  
**Alskea**

[alskea.com](http://alskea.com)



# Cromlyn Wood

LISBURN ROAD  
ROYAL HILLSBOROUGH

## THE BLARIS

3 BEDROOM DETACHED HOME  
**SITE 15**  
TOTAL FLOOR AREA 1,367 FT<sup>2</sup> APPROX.

# THE BLARIS

3 BEDROOM DETACHED HOME

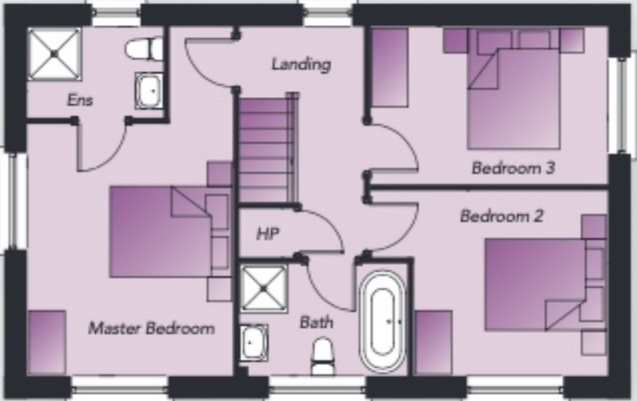
SITE 15

TOTAL FLOOR AREA 1,367 FT<sup>2</sup> APPROX.



GROUND FLOOR

Entrance Hall	Snug	11'1" x 9'7"
Lounge (max) 18'9" x 12'4"	Utility Room	7'8" x 7'0"
Kitchen/Dining (max) 18'9" x 12'4"	WC	6'4" x 3'7"



FIRST FLOOR

Principal Bed 13'6" x 11'2"	Bedroom 3 12'9" x 8'5"
Ensuite 7'4" x 4'9"	Bathroom 9'1" x 6'1"
Bedroom 2 10'5" x 10'0"	



Computer Visual



## SITE LAYOUT NOT TO SCALE

In compliance with Consumer Protection from Unfair Trading and Business Protection from Misleading Marketing Regulations, please note that any visual or pictorial representations as featured in this brochure such as 3D computer generated images are purely intended as a guide for illustrative, concept purposes only and often may be subject to change. Any floor plans and site layouts used are not to scale and all dimensions are approximate and subject to change. Also note the brochure does not feature exact location or presence of specific or detailed items such as street lighting, sub stations or full finishes etc. All specific details to your chosen plot or immediate boundaries etc. should be checked with the agent, developer, or your legal advisor prior to purchase.

Copyright notice: All rights reserved. The contents of this brochure may not be reproduced, copied, redistributed, or otherwise made available in whole or part without the prior written consent from the developer.

SALES REPRESENTATION BY



**South Belfast Office**  
525 Lisburn Road, Belfast BT9 7GQ  
Telephone 028 9066 8888  
[www.simonbrien.com](http://www.simonbrien.com)



15 Main Street, Royal Hillsborough BT26 6AE  
Telephone 028 9268 3762  
[www.downshireestateagents.co.uk](http://www.downshireestateagents.co.uk)

**Alskea**

[alskea.com](http://alskea.com)



# Cromlyn Wood

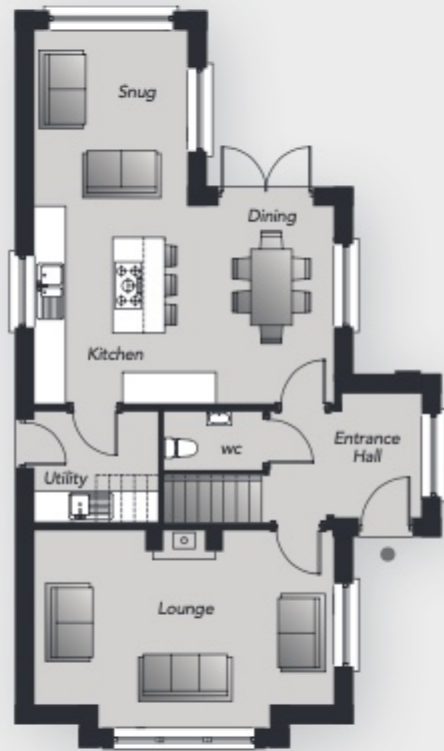
LISBURN ROAD  
ROYAL HILLSBOROUGH

## THE PANTRIDGE

3 BEDROOM DETACHED HOME  
**SITE 16**  
TOTAL FLOOR AREA 1,389 FT<sup>2</sup> APPROX.

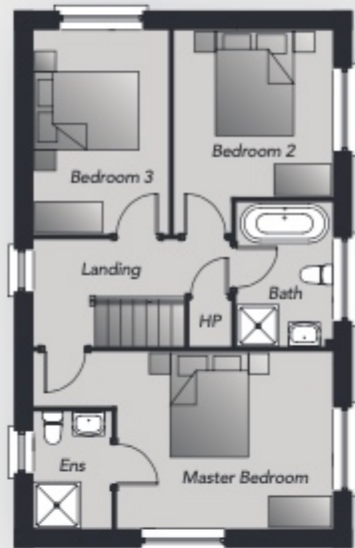
THE PANTRIDGE  
3 BEDROOM DETACHED HOME

SITE 16  
TOTAL FLOOR AREA 1,389 FT<sup>2</sup> APPROX.



GROUND FLOOR

Entrance Hall	Snug	11'1" x 9'7"
Lounge (max) 18'9" x 12'4"	Utility Room	7'8" x 7'0"
Kitchen/Dining (max) 18'9" x 12'4"	WC	6'4" x 3'7"



FIRST FLOOR

Principal Bed	13'6" x 11'2"	Bedroom 3	12'9" x 8'5"
Ensuite	7'4" x 4'9"	Bathroom	9'1" x 6'1"
Bedroom 2	10'5" x 10'0"		





## SITE LAYOUT NOT TO SCALE

In compliance with Consumer Protection from Unfair Trading and Business Protection from Misleading Marketing Regulations, please note that any visual or pictorial representations as featured in this brochure such as 3D computer generated images are purely intended as a guide for illustrative, concept purposes only and often may be subject to change. Any floor plans and site layouts used are not to scale and all dimensions are approximate and subject to change. Also note the brochure does not feature exact location or presence of specific or detailed items such as street lighting, sub stations or full finishes etc. All specific details to your chosen plot or immediate boundaries etc. should be checked with the agent, developer, or your legal advisor prior to purchase.

Copyright notice: All rights reserved. The contents of this brochure may not be reproduced, copied, redistributed, or otherwise made available in whole or part without the prior written consent from the developer.

SALES REPRESENTATION BY



**South Belfast Office**  
525 Lisburn Road, Belfast BT9 7GQ  
Telephone 028 9066 8888  
[www.simonbrien.com](http://www.simonbrien.com)



15 Main Street, Royal Hillsborough BT26 6AE  
Telephone 028 9268 3762  
[www.downshireestateagents.co.uk](http://www.downshireestateagents.co.uk)

**Alskea**

[alskea.com](http://alskea.com)

# Cromlyn Wood

LISBURN ROAD  
ROYAL HILLSBOROUGH

## THE KEATING

4 BEDROOM DETACHED HOME  
**SITE 41**  
TOTAL FLOOR AREA 2,392 FT<sup>2</sup> APPROX.

THE KEATING  
4 BEDROOM DETACHED HOME

SITE 41  
TOTAL FLOOR AREA 2,392 FT<sup>2</sup> APPROX.



LOWER GROUND FLOOR

Living Room (max)	21'8" x 13'4"
Home Office	12'2" x 8'3"
Outside Storage	19'8" x 11'2"
Storage	10'0" x 4'5"
Shower Room	10'0" x 4'6"

GROUND FLOOR

Entrance Hall	
Lounge (max)	15'9" x 14'2"
Kitchen	11'6" x 11'5"
Dining / Snug (max)	21'8" x 11'8"
Utility Room	8'5" x 5'8"
WC	6'1" x 3'7"
Garage	19'9" x 11'5"

FIRST FLOOR

Principal Bed (max)	14'5" x 13'1"
Ensuite	7'0" x 7'0"
Bedroom 2 (max)	12'1" x 12'1"
Bedroom 3	12'2" x 10'6"
Bedroom 4	12'2" x 8'5"
Bathroom	10'9" x 7'4"



Computer Visual



## SITE LAYOUT NOT TO SCALE

In compliance with Consumer Protection from Unfair Trading and Business Protection from Misleading Marketing Regulations, please note that any visual or pictorial representations as featured in this brochure such as 3D computer generated images are purely intended as a guide for illustrative, concept purposes only and often may be subject to change. Any floor plans and site layouts used are not to scale and all dimensions are approximate and subject to change. Also note the brochure does not feature exact location or presence of specific or detailed items such as street lighting, sub stations or full finishes etc. All specific details to your chosen plot or immediate boundaries etc. should be checked with the agent, developer, or your legal advisor prior to purchase.

Copyright notice: All rights reserved. The contents of this brochure may not be reproduced, copied, redistributed, or otherwise made available in whole or part without the prior written consent from the developer.

SALES REPRESENTATION BY



**South Belfast Office**  
525 Lisburn Road, Belfast BT9 7GQ  
Telephone 028 9066 8888  
[www.simonbrien.com](http://www.simonbrien.com)



15 Main Street, Royal Hillsborough BT26 6AE  
Telephone 028 9268 3762  
[www.downshireestateagents.co.uk](http://www.downshireestateagents.co.uk)

  
**Alskea**

[alskea.com](http://alskea.com)



# Cromlyn Wood

LISBURN ROAD  
ROYAL HILLSBOROUGH

## THE HAMILTON

4 BEDROOM DETACHED HOME  
**SITE 12**  
TOTAL FLOOR AREA 2,874 FT<sup>2</sup> APPROX.

## THE HAMILTON

4 BEDROOM DETACHED HOME

SITE 12

TOTAL FLOOR AREA 2,874 FT<sup>2</sup> APPROX.

## LOWER GROUND FLOOR

Living Room	17'0" x 14'9"
Bedroom 4	13'8" x 13'4"
Utility Room	13'4" x 8'3"
Storage (min)	9'9" x 7'3"
Shower Room	13'4" x 4'6"

## GROUND FLOOR

Entrance Hall	
Lounge (max)	17'0" x 14'9"
Kitchen	13'8" x 13'4"
Dining	11'1" x 9'6"
Snug	10'8" x 10'3"
WC	8'6" x 3'9"

## FIRST FLOOR

Principal Bed (min)	17'2" x 11'9"
Ensuite	10'5" x 3'9"
Bedroom 2	16'7" x 10'0"
Bedroom 3	12'4" x 9'9"
Study	9'9" x 8'4"
Bathroom	12'4" x 6'8"



Computer Visual



## SITE LAYOUT NOT TO SCALE

In compliance with Consumer Protection from Unfair Trading and Business Protection from Misleading Marketing Regulations, please note that any visual or pictorial representations as featured in this brochure such as 3D computer generated images are purely intended as a guide for illustrative, concept purposes only and often may be subject to change. Any floor plans and site layouts used are not to scale and all dimensions are approximate and subject to change. Also note the brochure does not feature exact location or presence of specific or detailed items such as street lighting, sub stations or full finishes etc. All specific details to your chosen plot or immediate boundaries etc. should be checked with the agent, developer, or your legal advisor prior to purchase.

Copyright notice: All rights reserved. The contents of this brochure may not be reproduced, copied, redistributed, or otherwise made available in whole or part without the prior written consent from the developer.

SALES REPRESENTATION BY



**South Belfast Office**  
525 Lisburn Road, Belfast BT9 7GQ  
Telephone 028 9066 8888  
[www.simonbrien.com](http://www.simonbrien.com)



15 Main Street, Royal Hillsborough BT26 6AE  
Telephone 028 9268 3762  
[www.downshireestateagents.co.uk](http://www.downshireestateagents.co.uk)

**Alskea**

[alskea.com](http://alskea.com)

# Cromlyn Wood

LISBURN ROAD  
ROYAL HILLSBOROUGH

## THE DOWNSHIRE

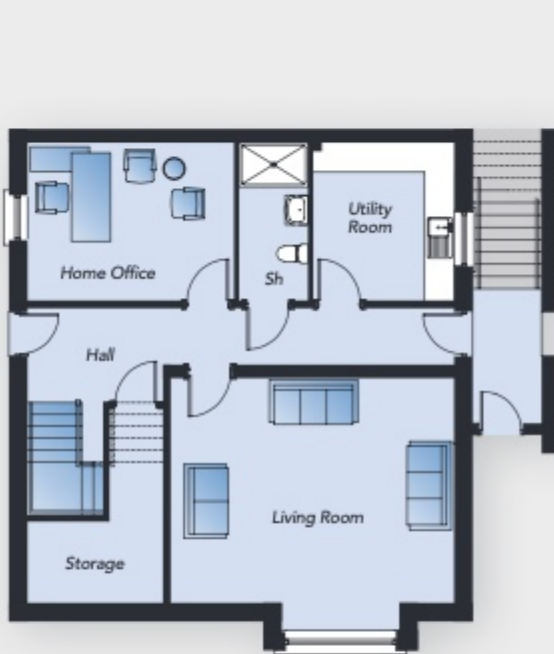
4 BEDROOM DETACHED HOME  
SITES 6 & 9  
TOTAL FLOOR AREA 2,734 FT<sup>2</sup> APPROX.

# THE DOWNSHIRE

4 BEDROOM DETACHED HOME

SITES 6 & 9  
TOTAL FLOOR AREA 2,734 FT<sup>2</sup> APPROX.

Note. Site 9 will be a handed version of these plans



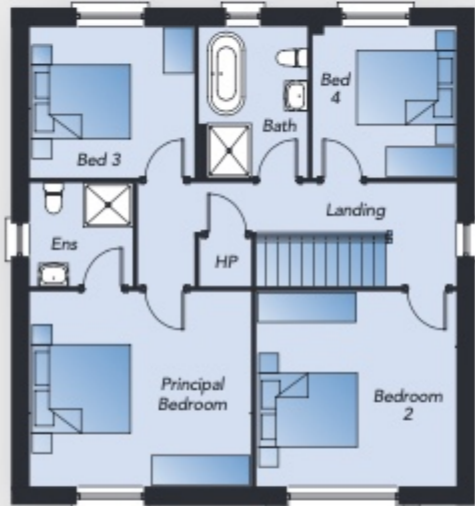
## LOWER GROUND FLOOR

Living Room (max)	18'9" x 16'8"
Home Office	13'7" x 10'5"
Utility Room	10'5" x 9'4"
Storage (max)	13'0" x 9'0"
Shower Room	10'5" x 4'5"



## GROUND FLOOR

Entrance Hall	
Lounge (max)	18'9" x 14'6"
Kitchen /Dining / Snug (max)	28'4" x 18'1"
Pantry	8'8" x 3'2"
WC	7'5" x 3'2"



## FIRST FLOOR

Principal Bed	14'7" x 13'0"
Ensuite	6'8" x 6'8"
Bedroom 2	13'3" x 13'0"
Bedroom 3	11'0" x 10'1"
Bedroom 4	10'1" x 9'5"
Bathroom	10'1" x 7'2"





## SITE LAYOUT NOT TO SCALE

In compliance with Consumer Protection from Unfair Trading and Business Protection from Misleading Marketing Regulations, please note that any visual or pictorial representations as featured in this brochure such as 3D computer generated images are purely intended as a guide for illustrative, concept purposes only and often may be subject to change. Any floor plans and site layouts used are not to scale and all dimensions are approximate and subject to change. Also note the brochure does not feature exact location or presence of specific or detailed items such as street lighting, sub stations or full finishes etc. All specific details to your chosen plot or immediate boundaries etc. should be checked with the agent, developer, or your legal advisor prior to purchase.

Copyright notice: All rights reserved. The contents of this brochure may not be reproduced, copied, redistributed, or otherwise made available in whole or part without the prior written consent from the developer.

SALES REPRESENTATION BY



**South Belfast Office**  
525 Lisburn Road, Belfast BT9 7GQ  
Telephone 028 9066 8888  
[www.simonbrien.com](http://www.simonbrien.com)



15 Main Street, Royal Hillsborough BT26 6AE  
Telephone 028 9268 3762  
[www.downshireestateagents.co.uk](http://www.downshireestateagents.co.uk)

**Alskea**

[alskea.com](http://alskea.com)



# Cromlyn Wood

LISBURN ROAD  
ROYAL HILLSBOROUGH

## THE CORNFORTH

4 BEDROOM DETACHED HOME  
**SITES 17, 21 & 45**  
TOTAL FLOOR AREA 1,767 FT<sup>2</sup> APPROX.

THE CORNFORTH  
4 BEDROOM DETACHED HOME

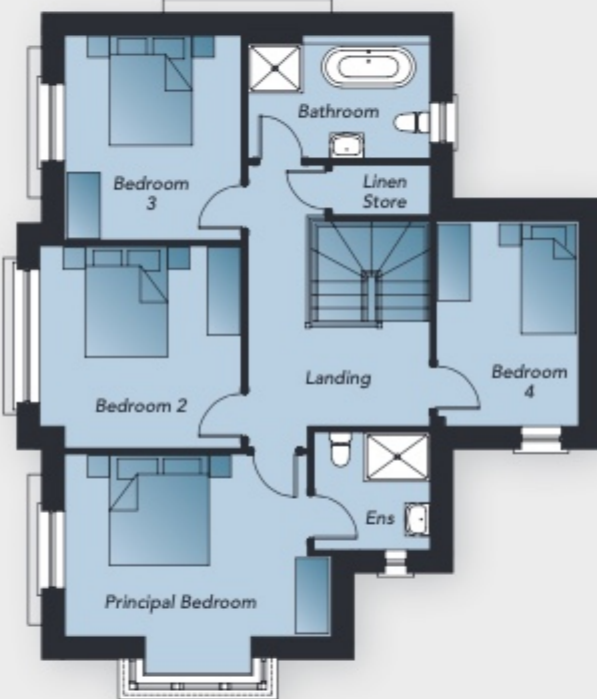
SITE 17, 21 & 45  
TOTAL FLOOR AREA 1,767 FT<sup>2</sup> APPROX.

*Note. Sites 17 and 21 are a handed version of these plans*



GROUND FLOOR

Entrance Hall	Kitchen	11'4" x 10'7"
Lounge (max)	Utility Room	12'2" x 5'8"
Living/Dining (min)	WC	6'0" x 3'6"



FIRST FLOOR

Principal Bed (max)	15'9" x 13'1"	Bedroom 4	12'2" x 8'5"
Ensuite	7'0" x 6'9"	Bathroom	10'9" x 6'8"
Bedroom 2 (max)	12'0" x 12'0"	Linen Store	5'9" x 3'0"
Bedroom 3	12'2" x 10'5"		





## SITE LAYOUT NOT TO SCALE

In compliance with Consumer Protection from Unfair Trading and Business Protection from Misleading Marketing Regulations, please note that any visual or pictorial representations as featured in this brochure such as 3D computer generated images are purely intended as a guide for illustrative, concept purposes only and often may be subject to change. Any floor plans and site layouts used are not to scale and all dimensions are approximate and subject to change. Also note the brochure does not feature exact location or presence of specific or detailed items such as street lighting, sub stations or full finishes etc. All specific details to your chosen plot or immediate boundaries etc. should be checked with the agent, developer, or your legal advisor prior to purchase.

Copyright notice: All rights reserved. The contents of this brochure may not be reproduced, copied, redistributed, or otherwise made available in whole or part without the prior written consent from the developer.

SALES REPRESENTATION BY



**South Belfast Office**  
525 Lisburn Road, Belfast BT9 7GQ  
Telephone 028 9066 8888  
[www.simonbrien.com](http://www.simonbrien.com)



15 Main Street, Royal Hillsborough BT26 6AE  
Telephone 028 9268 3762  
[www.downshireestateagents.co.uk](http://www.downshireestateagents.co.uk)

**Alskea**

[alskea.com](http://alskea.com)



# Cromlyn Wood

LISBURN ROAD  
ROYAL HILLSBOROUGH

## THE MAGENNIS

4 BEDROOM DETACHED HOME  
**SITES 42, 43 & 44**  
TOTAL FLOOR AREA 2,508 FT<sup>2</sup> APPROX.

THE MAGENNIS  
4 BEDROOM DETACHED HOME

SITES 42, 43 & 44  
TOTAL FLOOR AREA 2,508 FT<sup>2</sup> APPROX.

Note. Total Floor Area excludes Storage and Garage



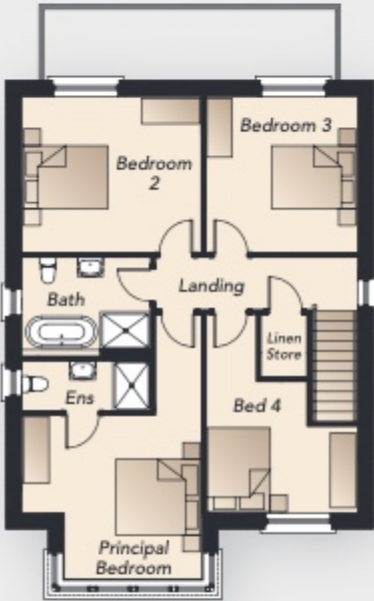
LOWER GROUND FLOOR

Living	19'3" x 13'7"
Utility Room	11'7" x 9'8"
Shower Room (max)	9'2" x 7'5"
Storage	19'5" x 11'2"



GROUND FLOOR

Entrance Hall	
Lounge (max)	17'9" x 15'9"
Kitchen /Dining / Snug (max)	26'3" x 21'3"
WC	5'4" x 3'7"
Garage	19'6" x 11'5"



FIRST FLOOR

Principal Bed	14'1" x 12'8"
Ensuite	10'1" x 3'9"
Bedroom 2	14'1" x 12'2"
Bedroom 3	12'2" x 12'0"
Bedroom 4 (max)	15'5" x 11'8"
Bathroom	10'1" x 7'7"
Linen Store	4'9" x 3'6"





## SITE LAYOUT NOT TO SCALE

SALES REPRESENTATION BY



**South Belfast Office**  
525 Lisburn Road, Belfast BT9 7GQ  
Telephone 028 9066 8888  
[www.simonbrien.com](http://www.simonbrien.com)



15 Main Street, Royal Hillsborough BT26 6AE  
Telephone 028 9268 3762  
[www.downshireestateagents.co.uk](http://www.downshireestateagents.co.uk)

**Alskea**

[alskea.com](http://alskea.com)

In compliance with Consumer Protection from Unfair Trading and Business Protection from Misleading Marketing Regulations, please note that any visual or pictorial representations as featured in this brochure such as 3D computer generated images are purely intended as a guide for illustrative, concept purposes only and often may be subject to change. Any floor plans and site layouts used are not to scale and all dimensions are approximate and subject to change. Also note the brochure does not feature exact location or presence of specific or detailed items such as street lighting, sub stations or full finishes etc. All specific details to your chosen plot or immediate boundaries etc. should be checked with the agent, developer, or your legal advisor prior to purchase.

Copyright notice: All rights reserved. The contents of this brochure may not be reproduced, copied, redistributed, or otherwise made available in whole or part without the prior written consent from the developer.



# Cromlyn Wood

LISBURN ROAD  
ROYAL HILLSBOROUGH

## THE KNIGHTLEY

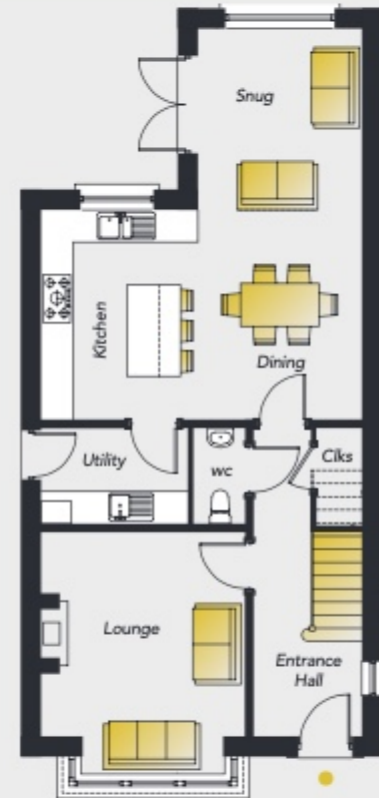
3 BEDROOM DETACHED HOME  
**SITE 36**  
TOTAL FLOOR AREA 1,421 FT<sup>2</sup> APPROX.

# THE KNIGHTLEY

3 BEDROOM DETACHED HOME

SITE 36

TOTAL FLOOR AREA 1,421 FT<sup>2</sup> APPROX.



GROUND FLOOR

Entrance Hall		Snug	11'1" x 10'0"
Lounge (max)	14'7" x 12'5"	Utility Room	9'1" x 5'8"
Kitchen / Dining	19'6" x 12'8"	WC	5'8" x 3'2"



FIRST FLOOR

Principal Bed (max)	15'0" x 11'8"	Bedroom 2	12'9" x 10'6"
Ensuite (max)	7'6" x 7'6"	Bedroom 3 (max)	9'3" x 8'7"
		Bathroom	10'7" x 7'4"



Computer Visual



## SITE LAYOUT NOT TO SCALE

In compliance with Consumer Protection from Unfair Trading and Business Protection from Misleading Marketing Regulations, please note that any visual or pictorial representations as featured in this brochure such as 3D computer generated images are purely intended as a guide for illustrative, concept purposes only and often may be subject to change. Any floor plans and site layouts used are not to scale and all dimensions are approximate and subject to change. Also note the brochure does not feature exact location or presence of specific or detailed items such as street lighting, sub stations or full finishes etc. All specific details to your chosen plot or immediate boundaries etc. should be checked with the agent, developer, or your legal advisor prior to purchase.

Copyright notice: All rights reserved. The contents of this brochure may not be reproduced, copied, redistributed, or otherwise made available in whole or part without the prior written consent from the developer.

SALES REPRESENTATION BY



**South Belfast Office**  
525 Lisburn Road, Belfast BT9 7GQ  
Telephone 028 9066 8888  
[www.simonbrien.com](http://www.simonbrien.com)



15 Main Street, Royal Hillsborough BT26 6AE  
Telephone 028 9268 3762  
[www.downshireestateagents.co.uk](http://www.downshireestateagents.co.uk)

**Alskea**

[alskea.com](http://alskea.com)