



Cromlyn Wood

LISBURN ROAD
ROYAL HILLSBOROUGH

THE PANTRIDGE

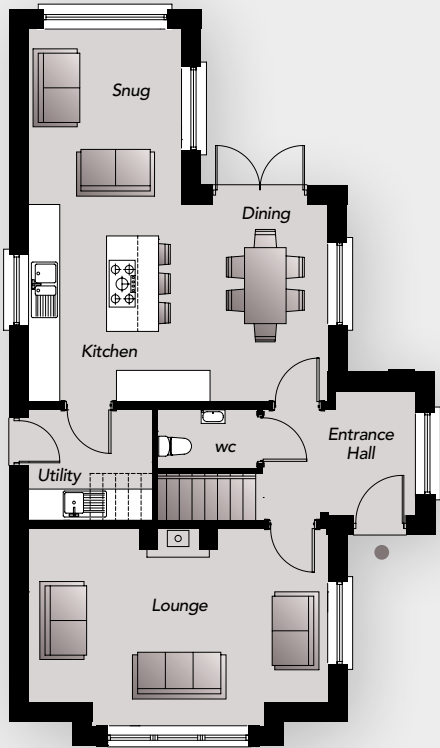
3 BEDROOM DETACHED HOME
SITE 16
TOTAL FLOOR AREA 1,389 FT² APPROX.

THE PANTRIDGE

3 BEDROOM DETACHED HOME

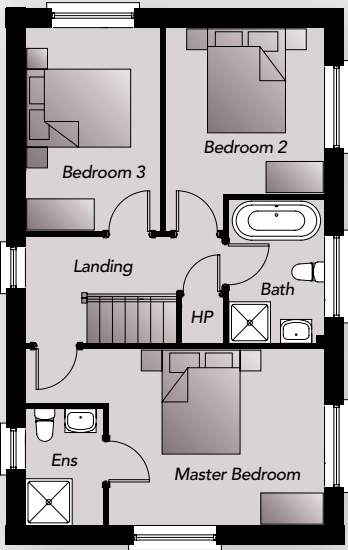
SITE 16

TOTAL FLOOR AREA 1,389 FT² APPROX.



GROUND FLOOR

Entrance Hall	Snug	11'1" x 9'7"
Lounge (max) 18'9" x 12'4"	Utility Room	7'8" x 7'0"
Kitchen/Dining (max) 18'9" x 12'4"	WC	6'4" x 3'7"



FIRST FLOOR

Principal Bed	13'6" x 11'2"	Bedroom 3	12'9" x 8'5"
Ensuite	7'4" x 4'9"	Bathroom	9'1" x 6'1"
Bedroom 2	10'5" x 10'0"		





Computer Visual



SITE LAYOUT NOT TO SCALE

SALES REPRESENTATION BY



South Belfast Office
525 Lisburn Road, Belfast BT9 7GQ
Telephone 028 9066 8888
www.simonbrien.com



15 Main Street, Royal Hillsborough BT26 6AE
Telephone 028 9268 3762
www.downshireestateagents.co.uk

Alskea

alskea.com

In compliance with Consumer Protection from Unfair Trading and Business Protection from Misleading Marketing Regulations, please note that any visual or pictorial representations as featured in this brochure such as 3D computer generated images are purely intended as a guide for illustrative, concept purposes only and often may be subject to change. Any floor plans and site layouts used are not to scale and all dimensions are approximate and subject to change. Also note the brochure does not feature exact location or presence of specific or detailed items such as street lighting, sub stations or full finishes etc. All specific details to your chosen plot or immediate boundaries etc. should be checked with the agent, developer, or your legal advisor prior to purchase.

Copyright notice: All rights reserved. The contents of this brochure may not be reproduced, copied, redistributed, or otherwise made available in whole or part without the prior written consent from the developer.