

THE GRANGE

A6.1b/A6c

Sites 251/252

Sites 392/393



SALES AND INFORMATION

028 9042 8661

ANTRIMCONSTRUCTION.NET

Ref: 20250221

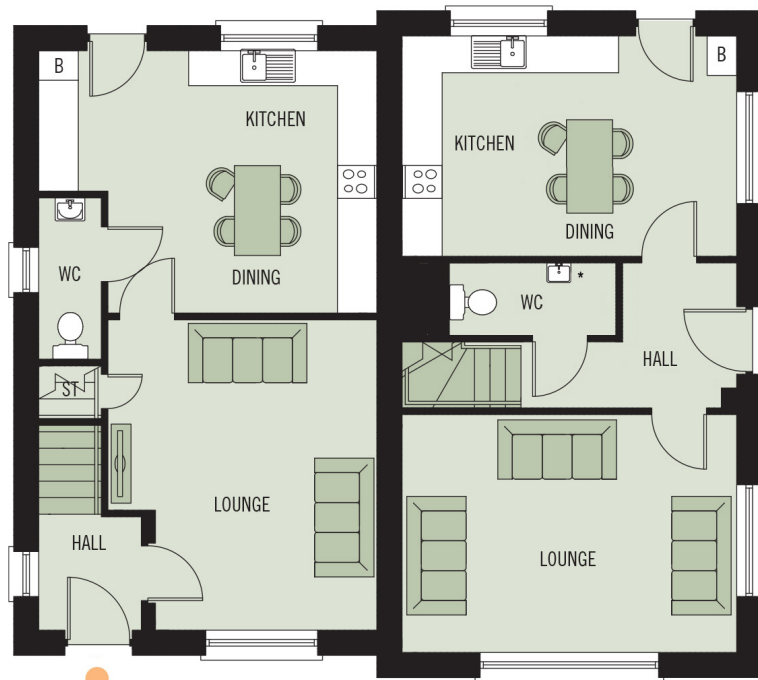


COMPUTER VISUAL

CHOOSE YOUR PERFECT
ANTRIM CONSTRUCTION HOME

BELMONT HALL
BELMONT ROAD, ANTRIM

GROUND FLOOR

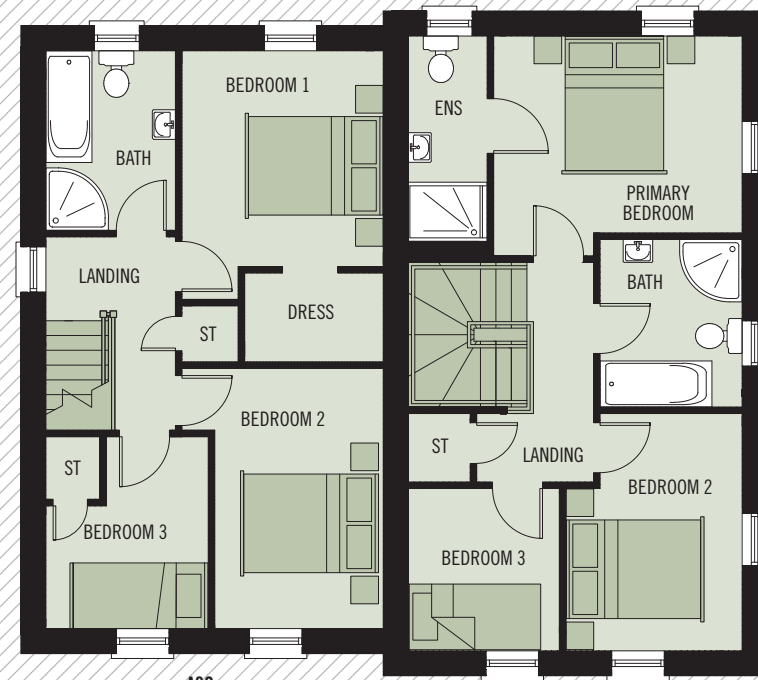


A6C

A6.1b

* Sink with storage unit

FIRST FLOOR



A6C

A6.1b

THE GRANGE

A6.1b/A6c

BELMONT HALL

BELMONT ROAD, ANTRIM



COMPUTER VISUAL

A6C

A6.1b

GROUND FLOOR - A6C

LOUNGE	4.71 x 4.08M	15'4" x 13'3" MAX
KITCHEN/DINING	5.13 x 3.98M	16'8" x 13'0" MAX
WC	2.45 x 0.95M	8'0" x 3'1"

FIRST FLOOR - A6C

BEDROOM 1	3.28 x 3.06M	10'7" x 10'0" MIN
DRESSING AREA	2.10 x 1.35M	6'9" x 4'4"
BEDROOM 2	3.96 x 3.06M	12'9" x 10'0" MAX
BEDROOM 3	2.92 x 2.47M	9'5" x 8'1" MAX
BATHROOM	2.73 x 1.97M	8'9" x 6'4"

GROUND FLOOR - A6.1b

LOUNGE	5.08 x 3.61M	16'6" x 11'8"
KITCHEN/DINING	5.08 x 3.34M	16'6" x 10'9"
WC	2.73 x 1.0M	8'11" x 3'3"

FIRST FLOOR - A6.1b

PRIMARY BEDROOM	3.78 x 3.34M	12'4" x 10'9" MAX
ENSUITE	3.34 x 1.20M	10'9" x 3'9"
BEDROOM 2	3.61 x 2.68M	11'8" x 8'7" MAX
BEDROOM 3	2.47 x 2.30M	8'1" x 7'5"
BATHROOM	2.55 x 2.16M	8'3" x 7'0"

TOTAL FLOOR AREA: A6C - 90m² OR 970 SQ FT APPROX.
A6.1b - 95m² OR 1,022 SQ FT APPROX.



WHILST EVERY CARE IS TAKEN IN PREPARING THIS INFORMATION, NO REPRESENTATION IS GIVEN, AND IT DOES NOT FORM ANY PART OF A CONTRACT. ANY INTENDING PURCHASER MUST SATISFY HIMSELF/HERSELF AS TO THE CORRECTNESS OF EACH OF THE STATEMENTS CONTAINED IN THESE PARTICULARS. WE RESERVE THE RIGHT TO ALTER SPECIFICATIONS WITHOUT DUE NOTICE.