

Dougan

RESIDENTIAL

Telephone 028 9030 8855
douganproperty.com



Apt 11 De Beere Court
Finaghy Road South, Belfast, BT10 0DF

Asking Price £109,950

KEY FEATURES

- Well Presented Ground Floor Apartment
- Excellent Location Within Walking Distance Of Finaghy Village
- Easy Access To Main Arterial Routes And Public Transport Services
- Bright And Spacious Living Room
- Modern Fitted Kitchen
- One Bedroom With Storage
- Well Appointed Shower Room
- Own Door Access
- Gas Heating
- Double Glazing
- One Allocated Parking Space
- Early Viewing Advised



SUMMARY

Excellent ground floor apartment located in a quiet, select development on Finaghy Road South. The development benefits from an superb location with the vibrant Finaghy Village within walking distance and therefore is ideally suited for first time buyers and folk wishing to downsize. Belfast City Centre is also easily accessible by bus, car or train.

Internally the apartment boasts spacious accommodation throughout comprising of a bright and spacious living room, modern fitted kitchen, one double bedroom with built in storage and a well-appointed shower room.

The apartment also benefits from double glazing, communal gardens and one allocated car parking space.

Early viewing is advised to appreciate this fine apartment.

ACCOMMODATION:

Ground Floor

ENTRANCE HALL:

Pvc front door, storage, cloakroom, linen closet

LIVING ROOM: 14' 5" x 12' 3" (4.39m x 3.73m)

KITCHEN: 7' 7" x 7' 1" (2.31m x 2.16m)

Range of high and low level units with chrome handles, wood effect work surfaces, stainless steel sink unit, space for oven and hob with extractor fan over, plumbed for washing machine, partly tiled walls

BEDROOM (1): 12' 2" x 10' 7" (3.71m x 3.23m) Built in storage

SHOWER ROOM:

Fully tiled shower cubicle, pedestal wash hand basin with chrome taps, low flush w.c, tiled floor

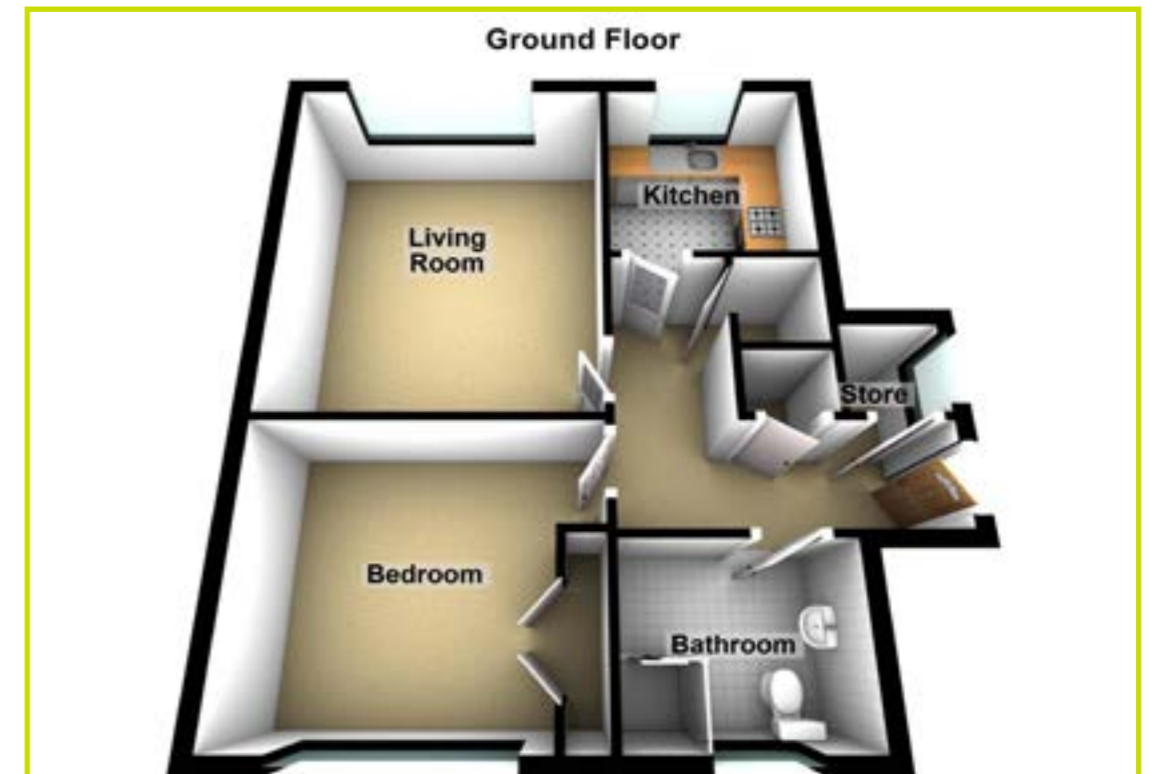
Outside

One allocated parking space. Communal gardens.

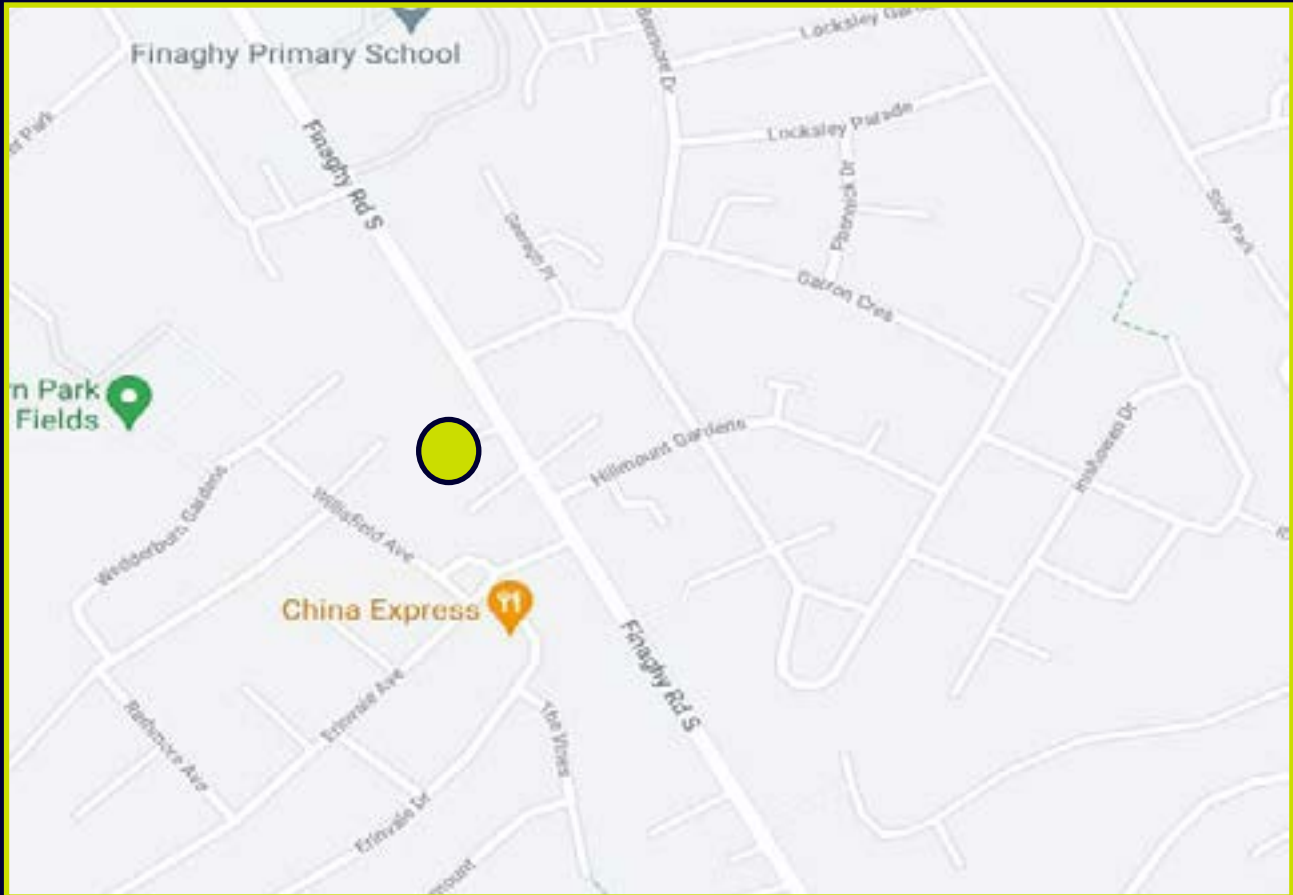




FLOOR PLAN (NOT TO SCALE)



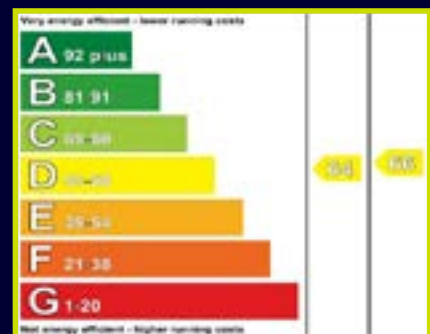
LOCATION MAP



DIRECTIONS Travelling down Finaghy Road South from Upper Malone, De Beere Court is located on the left hand side



EPC



Dougan
RESIDENTIAL

6 Orpen Shopping Centre Upper Lisburn Road
Belfast BT10 0BG
Telephone 028 9030 8855
Email info@douganproperty.com
Web www.douganproperty.com



Dougan Residential for themselves and for the Vendors or Lessors of the property whose agents they are give notice that; i) these particulars are given without responsibility of Dougan Residential or the Vendors or Lessors as a general outline only, for the guidance of prospective purchasers or tenants, and do not constitute the whole or any part of an offer or contract; ii) Dougan Residential cannot guarantee the accuracy of any description, dimensions, references to condition, necessary permissions for use and occupation and other details contained herein and any prospective purchasers or tenants should not rely on them as statements or representations of fact but must satisfy themselves by inspection or otherwise as to the accuracy of each of them; iii) no employee of Dougan Residential has any authority to make or give any representation or warranty or enter into any contract whatsoever in relation to the property; iv) VAT may be payable on the purchase price and/or rent, all figures are quoted exclusive of VAT, intending purchasers or lessees must satisfy themselves as to the applicable VAT position, if necessary by taking appropriate professional advice; v) Dougan Residential will not be liable, in negligence or otherwise, for any loss arising from the use of these particulars.