

To Let

Modern Office Suites
City Exchange, 11-13 Gloucester Street, Belfast BT1 4LS



CUSHMAN &
WAKEFIELD



McCOMBE
PIERCE



To Let City Exchange, 11-13 Gloucester Street, Belfast BT1 4LS



Property Highlights

- Excellent City Centre Location.
- 3 fully fitted suites available.
- Secure on-site parking available by agreement.
- Immediately available with minimal expense.

Location

Gloucester Street is located between Chichester Street and May Street in Belfast City Centre, a short walk from the city's retail core with Victoria Square Shopping Centre as well as the Laganside Law Courts close by.

Situated a few minutes' walk from the Europa Bus & Rail Station and Central Rail Station, Gloucester Street is also in close proximity to the main Metro Bus terminus at Donegall Square. There are a number of public and private car parks in the immediate vicinity.

Description

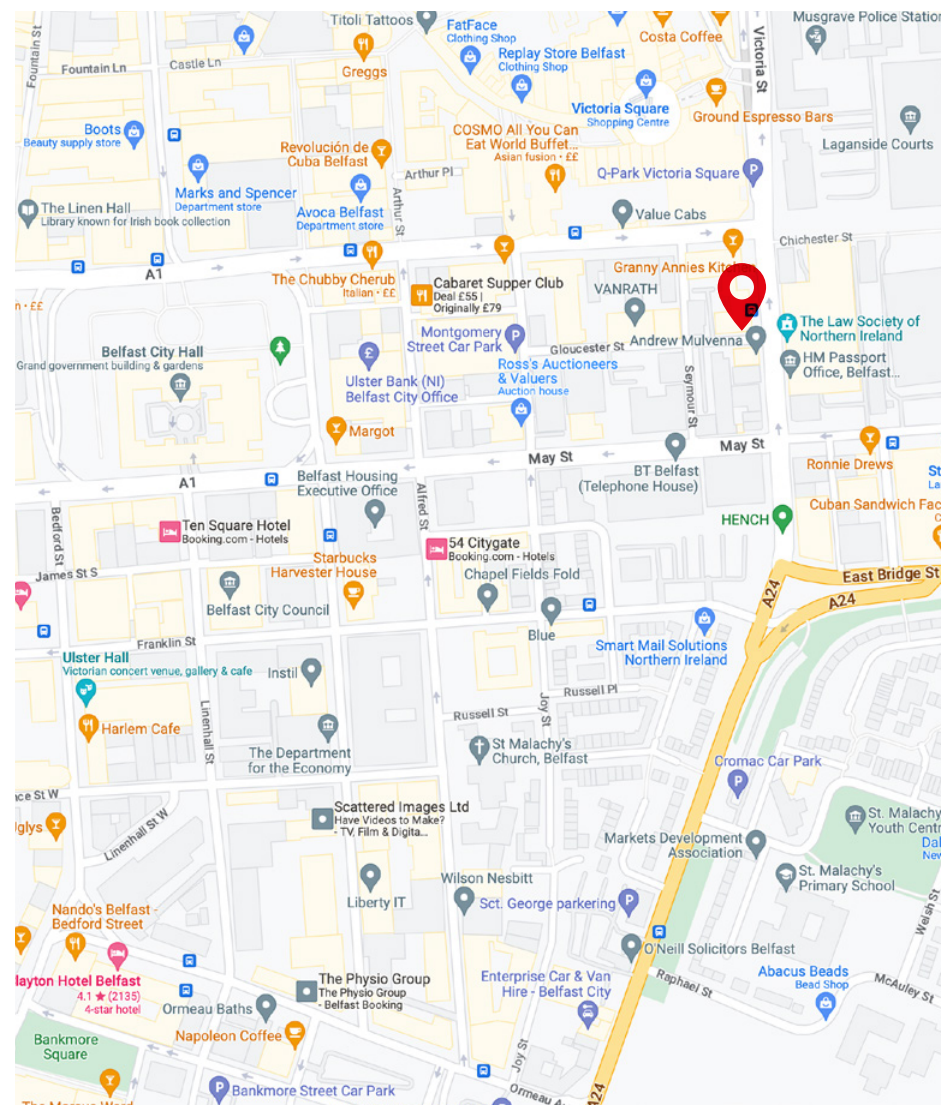
City Exchange is finished to a high standard to include impressive entrance foyer, two high speed passenger lifts, raised access floors, door entry system, fully fitted WCs on each floor, gas fired central heating, suspended ceilings with recessed LED lighting and excellent natural lighting throughout.

City Exchange has been designed for professional companies requiring prestigious accommodation in a building which will project a strong corporate identity.

The first-floor suite extends to approx 1,551 sq ft and benefits from 2 meeting rooms and a kitchen area.

The third-floor suite extends to approx 3,240 sq ft and benefits from a boardroom, 2 meeting rooms, comms room and kitchen/breakout area.

The sixth-floor suite extends to approx 1,630 sq ft and benefits from a boardroom, 2 meeting rooms, comms room and kitchen/breakout area.



To Let City Exchange, 11-13 Gloucester Street, Belfast BT1 4LS



Accommodation/Rent/Rates & Service Charge Schedule

The property provides the following approximate areas and calculations:

Floor	Sq Ft Approx	Sq M Approx.	Rent P.A.X.	Rates Payable 2024/25	Service Charge	Insurance	EPC Rating
Suite 1A	1,551	144	£27,850	£11,987*	c. £3,100	£584	B48
3rd Floor	3,240	301	£56,700	£29,489*	c. £6,500	£1,250	C53
Suite 6B	1,630	151	£29,250	£13,126*	c. £3,260	£650	C60

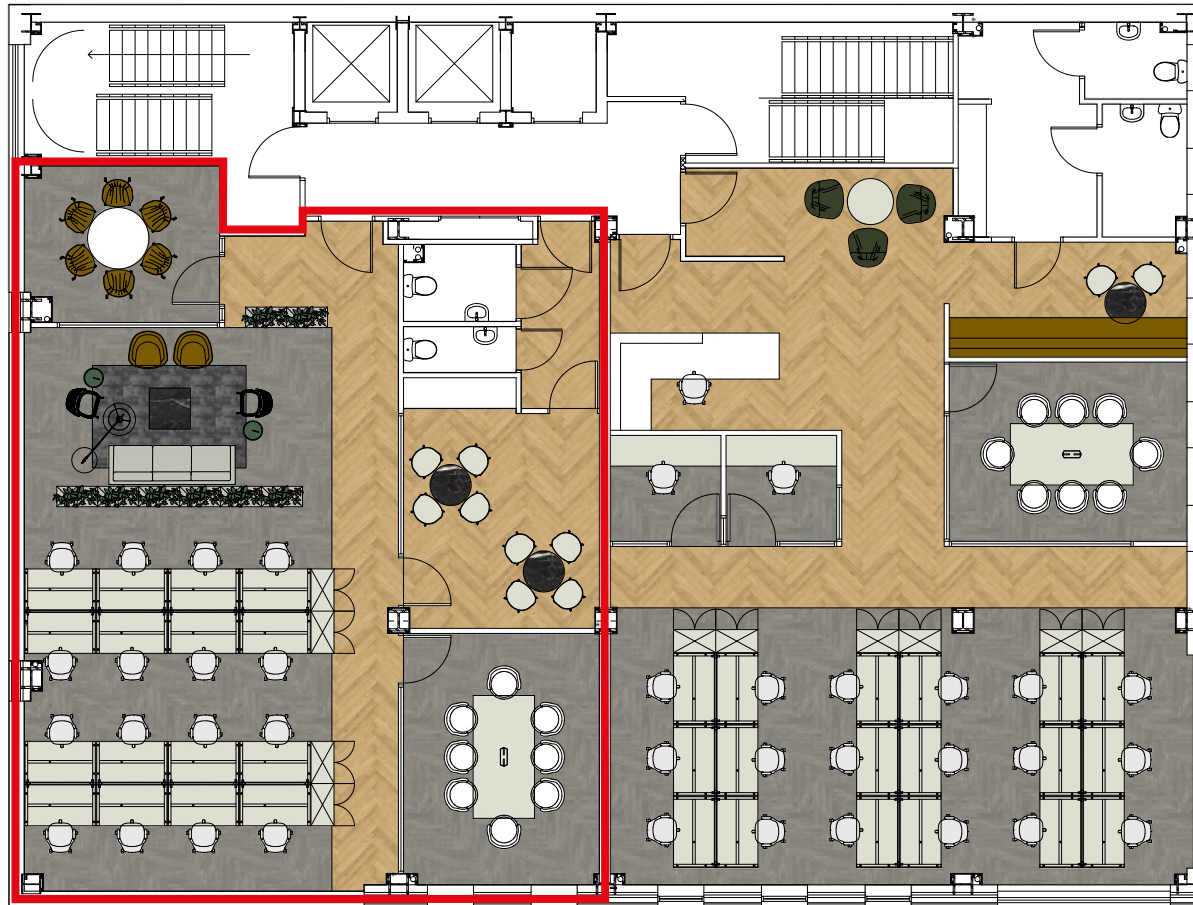
*Tenants should make their own enquires with Land & Property Services.

VAT

All prices and figures quoted are exclusive of VAT which may be chargeable at the prevailing rate.



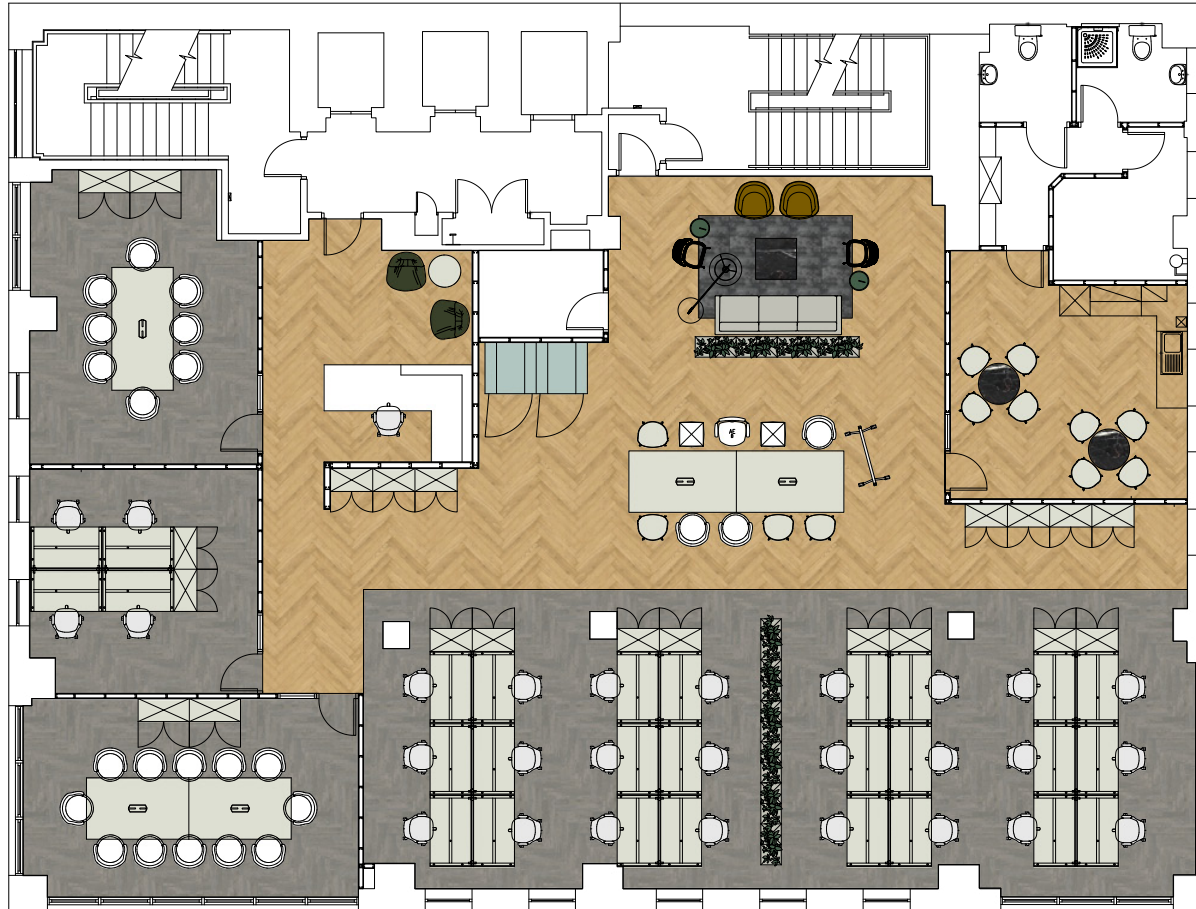
To Let City Exchange, 11-13 Gloucester Street, Belfast BT1 4LS



Suite 1A Floor Plan

Not To Scale. For indicative purposes only.

To Let City Exchange, 11-13 Gloucester Street, Belfast BT1 4LS



3rd Floor Plan

Not To Scale. For indicative purposes only.

To Let City Exchange, 11-13 Gloucester Street, Belfast BT1 4LS



Suite 6B Floor Plan

Not To Scale. For indicative purposes only.

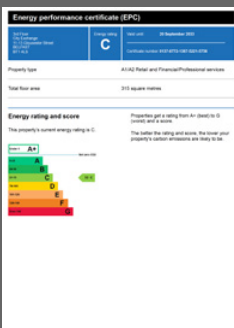
To Let City Exchange, 11-13 Gloucester Street, Belfast BT1 4LS



EPC



Suite 1A



3rd Floor



Suite 6B

McCombe Pierce LLP

Lombard House, 10-20 Lombard Street, Belfast BT1 1RD

+44 (0)28 9023 3455

www.cushmanwakefield-ni.com

For more information, please contact joint agents:

Robert Toland

07980 740270

robert.toland@cushwake-ni.com

James Russell

07815 742152

james.russell@cushwake-ni.com

Ryan McKenna

07984 154488

rmck@mckibbin.co.uk



Disclaimer

"McCombe Pierce LLP (and its subsidiaries and their joint Agents where applicable) for themselves and for the vendors or lessors of this property for whom they act, give notice that:

- (i) these particulars are a general outline only, for the guidance of prospective purchasers or tenants, and do not constitute the whole or any part of an offer or contract; McCombe Pierce LLP cannot guarantee the accuracy of any description, dimensions, references to condition, necessary permissions for use and occupation and other details contained herein and prospective purchasers or tenants must not rely on them as statements of fact or representations and must satisfy themselves as to their accuracy;
- (iii) no employee of McCombe Pierce LLP (and its subsidiaries and their joint Agents where applicable) has any authority to make or give any representation or warranty or enter into any contract whatever in relation to the property;
- (iv) rents quoted in these particulars may be subject to VAT in addition;
- (v) McCombe Pierce LLP (and its subsidiaries where applicable) will not be liable, in negligence or otherwise, for any loss arising from the use of these particulars; and the reference to any plant, machinery, equipment, services, fixtures or fittings at the property shall not constitute a representation (unless otherwise stated) as to its state or condition or that it is capable of fulfilling its intended function. Prospective purchasers/tenants should satisfy themselves as to the fitness of such items for their requirements."

Customer due diligence:

As a business carrying out estate agency work we are required to verify the identity of both the vendor and purchaser as outlined in The Money Laundering, Terrorist Financing and Transfer of Funds (Information on the Payer) Regulations 2017 - <http://www.legislation.gov.uk/uksi/2017/692/made>. Any information and documentation provided by you will be held for a period of five years from when you cease to have a contractual relationship with McCombe Pierce LLP. The information will be held in accordance with the General Data Protection Regulation (GDPR) on our client file and will not be passed to any other party, unless we are required to do so by law and regulation.