

To Let/May Sell

Excellent Commercial Property
29 Ballyclare Road, Glengormley, BT36 5EU



CUSHMAN &
WAKEFIELD



McCOMBE
PIERCE



To Let/May Sell

29 Ballyclare Road, Glengormley, BT36 5EU



Property Highlights

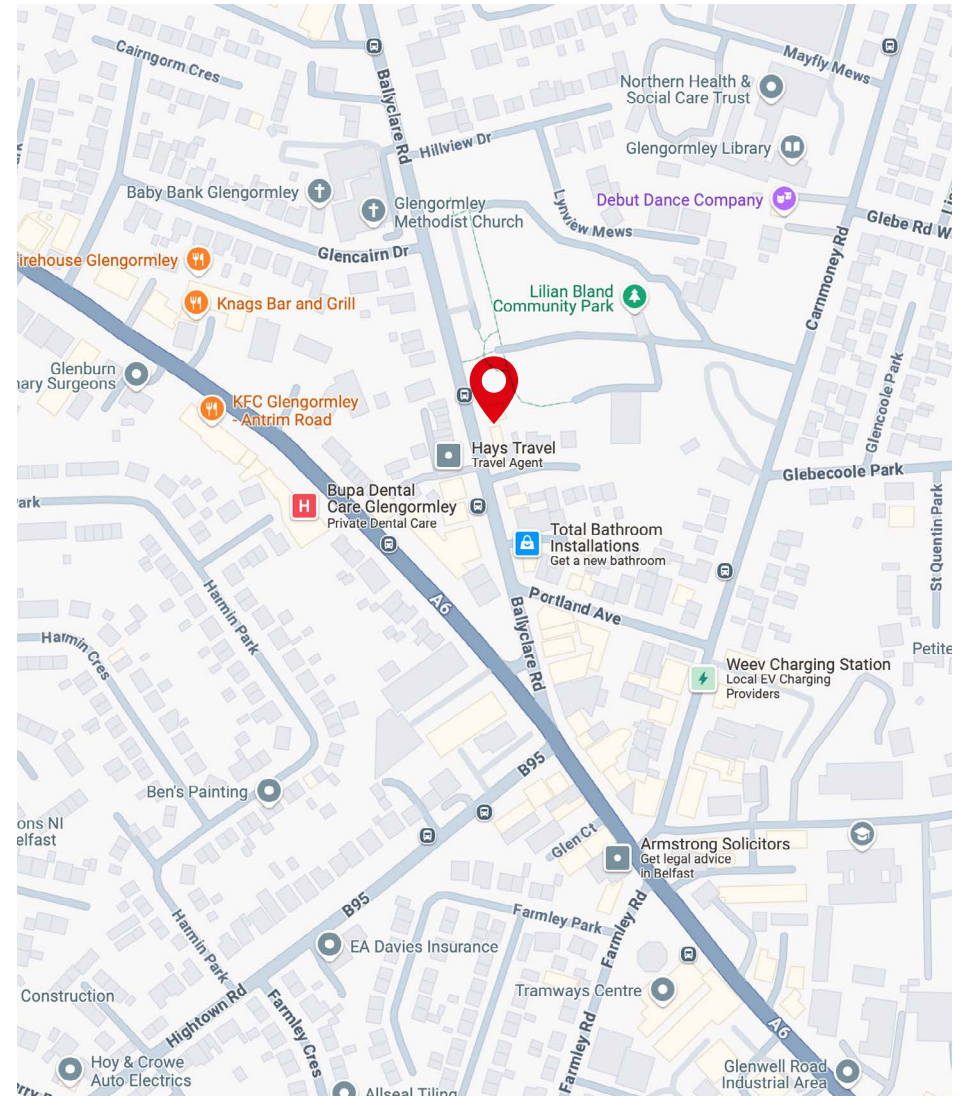
- Occupying a prominent and accessible location within Glengormley's commercial core.
- Standalone building with ample off street car parking.
- Extending to approx. 788 Sq Ft (73.20 Sq M) over ground and first floors.
- Modern fully fitted accommodation requiring minimal expenditure.
- Suitable for a variety of uses, subject to any necessary statutory consents.
- Immediately Available.

Location

Glengormley is a townland within Newtownabbey located approximately 6 miles north of Belfast City Centre and is easily accessible being bisected by the Antrim Road and positioned close to the Sandyknowes Junction of the M2 Motorway. It has a commercial core which is surrounded by high density housing.

The Ballyclare Road is a busy thoroughfare benefitting from high volumes of vehicular traffic and is well served by public transport with the subject property occupying a prominent and accessible position close to its junction with the Antrim Road and immediately adjacent Lilian Bland Park.

Neighbouring commercial occupiers include Eden Coffee Shop, Hays Travel, The Wee Bistro, Total Bathroom Installations, The Portland Practice Dental Surgery, Country Estates and MediCare Pharmacy with The Range and Tesco in close proximity.



To Let/May Sell

29 Ballyclare Road, Glengormley, BT36 5EU



Description

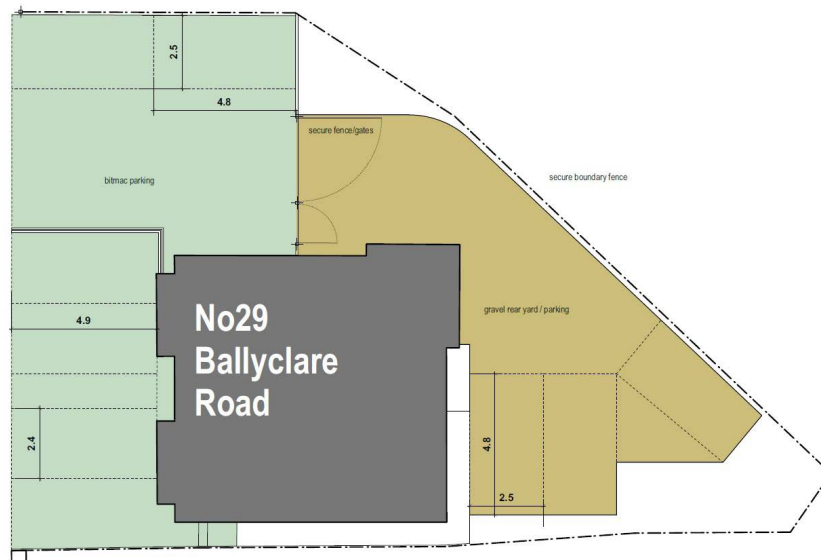
Two storey standalone building beneath pitched and flat roofs finished in a painted render with aluminium framed double glazed windows and accommodation arranged over ground and first floors.

The ground floor is currently configured to provide three offices with kitchen and WC facilities positioned to the rear.

The first floor comprises an office and WC.

The premises are fully fitted requiring minimal expenditure with finishes such as plastered/painted and papered walls, plastered/painted ceilings with recessed lighting, laminate, vinyl and tile floor coverings, gas heating, CAT 5 cabling and an intruder alarm.

The property also benefits from ample off street car parking to the front and rear.



Not To Scale. For indicative purposes only.



To Let/May Sell

29 Ballyclare Road, Glengormley, BT36 5EU



Accommodation

The property provides the following approximate net internal area:

Description	Sq Ft	Sq M
Ground Floor	534	49.60
First Floor	254	23.60
Total	788	73.20

Lease Details

Term:	By Negotiation.
Rent:	£17,500 per annum exclusive, subject to contract.
Repairs:	Full repairing terms. Tenant responsible for all repairs and maintenance to the property.
Buildings Insurance:	Tenant to reimburse the Landlord the premium. Estimated at £650 pax.

Non Domestic Rates

Rates payable for 2025/26 are approximately £3,614 (£2,891 after applying Small Business Rates Relief).

Tenure

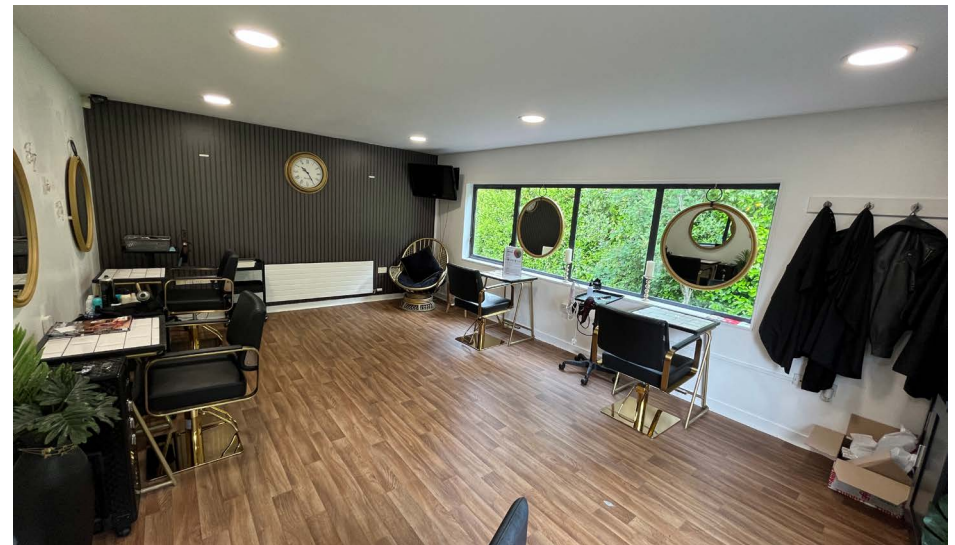
We are advised that the property is held Freehold.

Price

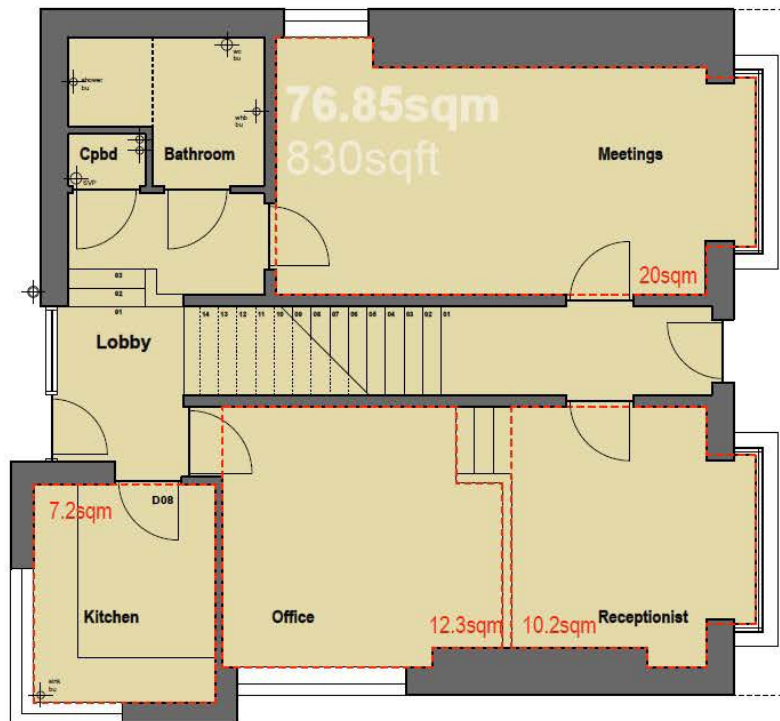
Offers invited in excess of £180,000 exclusive, subject to contract.

VAT

We are advised that the property is not currently VAT Registered.

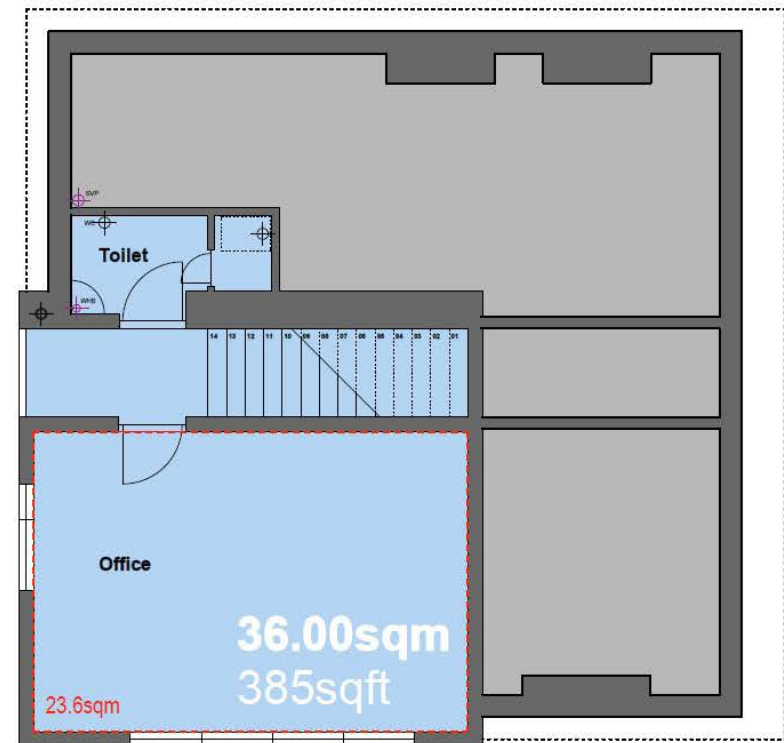


To Let/May Sell
29 Ballyclare Road, Glengormley, BT36 5EU



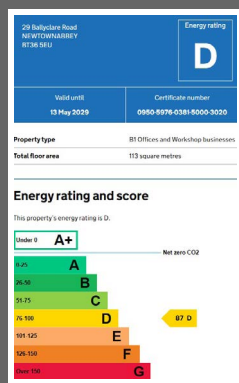
Ground Floor

nett
73.2sqm
788sqft



First Floor

EPC



McCombe Pierce LLP

Lombard House, 10-20 Lombard Street, Belfast BT1 1RD

+44 (0)28 9023 3455

www.cushmanwakefield-ni.com

For more information, please contact:

James Russell

028 9023 3455

james.russell@cushwake-ni.com

Mark Riddell

028 9023 3455

mark.riddell@cushwake-ni.com

Pierce Mulrone

028 9023 3455

pierce.mulrone@cushwake-ni.com



CUSHMAN &
WAKEFIELD



McCOMBE
PIERCE

Disclaimer

"McCombe Pierce LLP (and its subsidiaries and their joint Agents where applicable) for themselves and for the vendors or lessors of this property for whom they act, give notice that:

- (i) these particulars are a general outline only, for the guidance of prospective purchasers or tenants, and do not constitute the whole or any part of an offer or contract; McCombe Pierce LLP cannot guarantee the accuracy of any description, dimensions, references to condition, necessary permissions for use and occupation and other details contained herein and prospective purchasers or tenants must not rely on them as statements of fact or representations and must satisfy themselves as to their accuracy;
- (ii) no employee of McCombe Pierce LLP (and its subsidiaries and their joint Agents where applicable) has any authority to make or give any representation or warranty or enter into any contract whatever in relation to the property;
- (iii) rents quoted in these particulars may be subject to VAT in addition;
- (iv) McCombe Pierce LLP (and its subsidiaries where applicable) will not be liable, in negligence or otherwise, for any loss arising from the use of these particulars; and the reference to any plant, machinery, equipment, services, fixtures or fittings at the property shall not constitute a representation (unless otherwise stated) as to its state or condition or that it is capable of fulfilling its intended function. Prospective purchasers/tenants should satisfy themselves as to the fitness of such items for their requirements."

Customer due diligence:

As a business carrying out estate agency work we are required to verify the identity of both the vendor and purchaser as outlined in The Money Laundering, Terrorist Financing and Transfer of Funds (Information on the Payer) Regulations 2017 - <http://www.legislation.gov.uk/uksi/2017/692/made>. Any information and documentation provided by you will be held for a period of five years from when you cease to have a contractual relationship with McCombe Pierce LLP. The information will be held in accordance with the General Data Protection Regulation (GDPR) on our client file and will not be passed to any other party, unless we are required to do so by law and regulation.