

# To Let

High Profile Business Accommodation  
14 Falcon Road, Belfast, BT12 6RD



CUSHMAN &  
WAKEFIELD



McCOMBE  
PIERCE





## To Let

### 14 Falcon Road, Belfast, BT12 6RD



#### Property Highlights

- Situated in a well established and highly desirable location off the Boucher Road.
- Extending to approx. 6,628 Sq Ft (615.76 Sq M).
- Eaves height of approx. 6.8 metres.
- Fully fitted accommodation requiring minimal incoming expenditure.
- Ample on-site parking/servicing.
- Suitable for a variety of uses, subject to any necessary statutory consents.
- Rent - £42,000 pax, subject to contract.
- Immediately Available.

#### Location

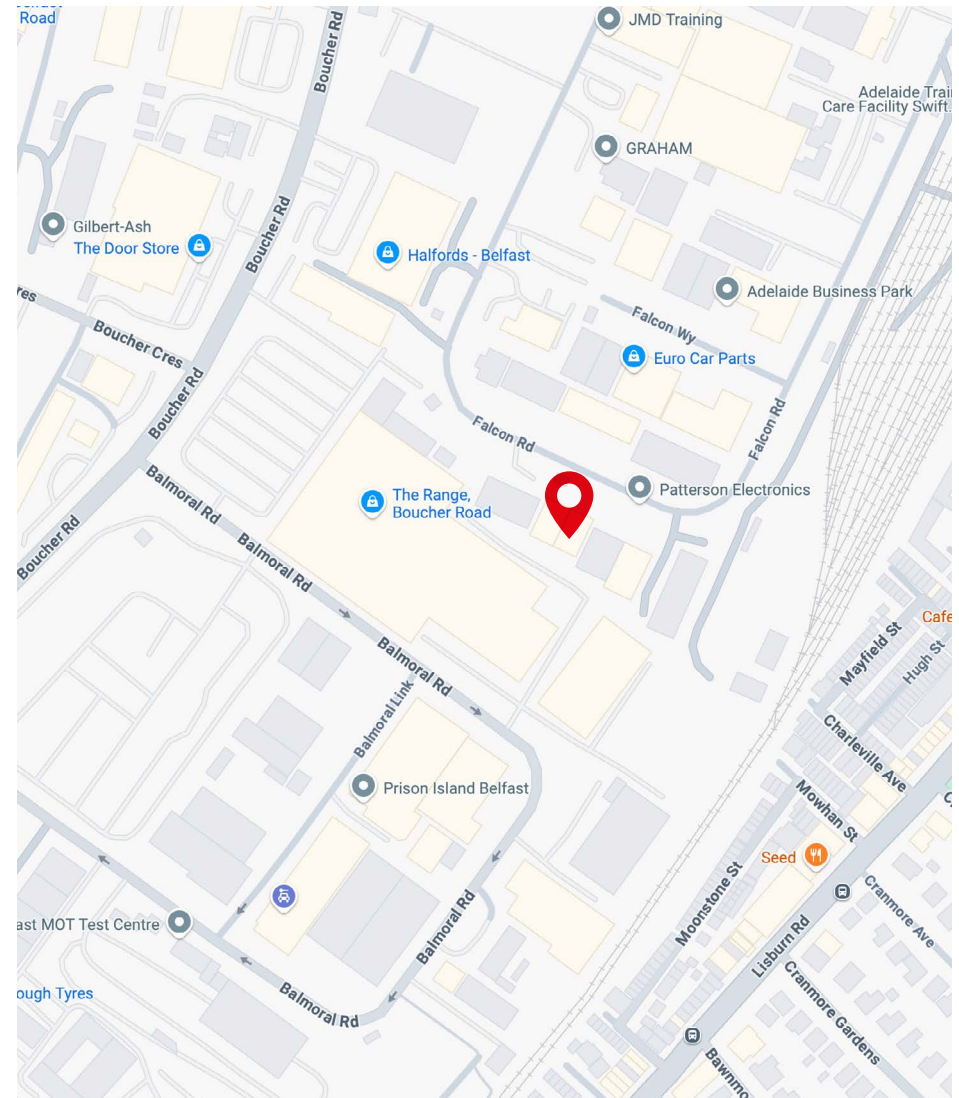
The subject property is located off the Boucher Road on a prominent site on Falcon Road in South Belfast.

The location benefits from a high degree of accessibility given its immediate proximity to the M1 Motorway (c.0.5 miles) and Belfast City Centre (c.1.5 miles).

Occupiers in the locality include; Soaks Bathrooms, Dessian PVCu Fabricators, The Wooden Floor Company, Euro Car Parts, Macnaughton Blair, Kitchen Design Centre and Teamwear Ireland.



Not To Scale. For indicative purposes only.



## To Let

### 14 Falcon Road, Belfast, BT12 6RD

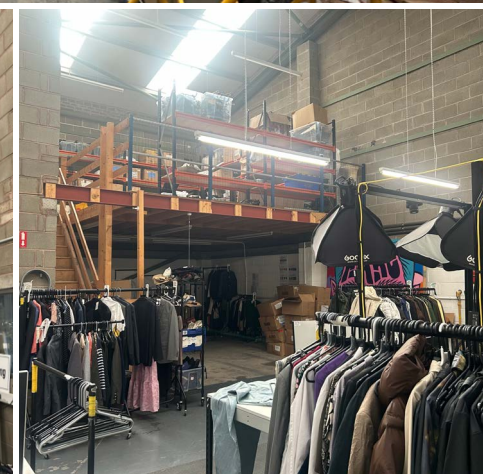
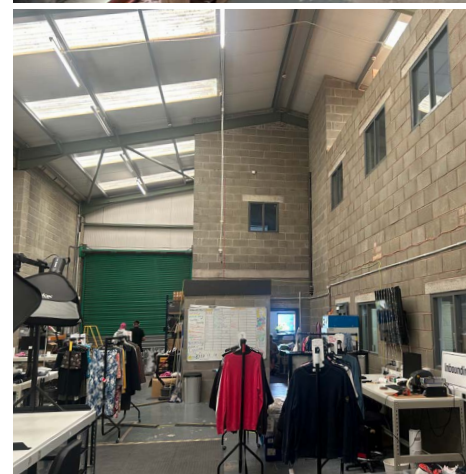


#### Description

The subject forms part of a modern showroom/warehouse development which comprises two units. The property is of a steel portal frame construction enclosed with a combination of brick/block work and profile metal cladding. The unit benefits from an electrically operated roller shutter door and trade counter shop frontage on the front elevation.

Internally the premises currently provide warehouse and office accommodation together with kitchen and WC facilities, all of which are finished/maintained to an excellent standard. The warehouse benefits from an eaves height of c.6.8 metres and a ridge height of c.7.8 metres with the roof containing translucent rooflights.

Externally the unit benefits from ample marshalling and on-site car parking.





To Let

14 Falcon Road, Belfast, BT12 6RD



Accommodation

The property provides the following approximate internal area:

Description	Sq Ft	Sq M
Ground Floor Warehouse	2,064	191.75
Mezzanine Warehouse	430	39.95
Ground Floor Office Block	2,067	192.03
First Floor Office Block	2,067	192.03
Total	6,628	615.76

\* The Gross Internal Area of the ground floor extends to c.4,131 Sq Ft (383.78 Sq M).

Lease Details

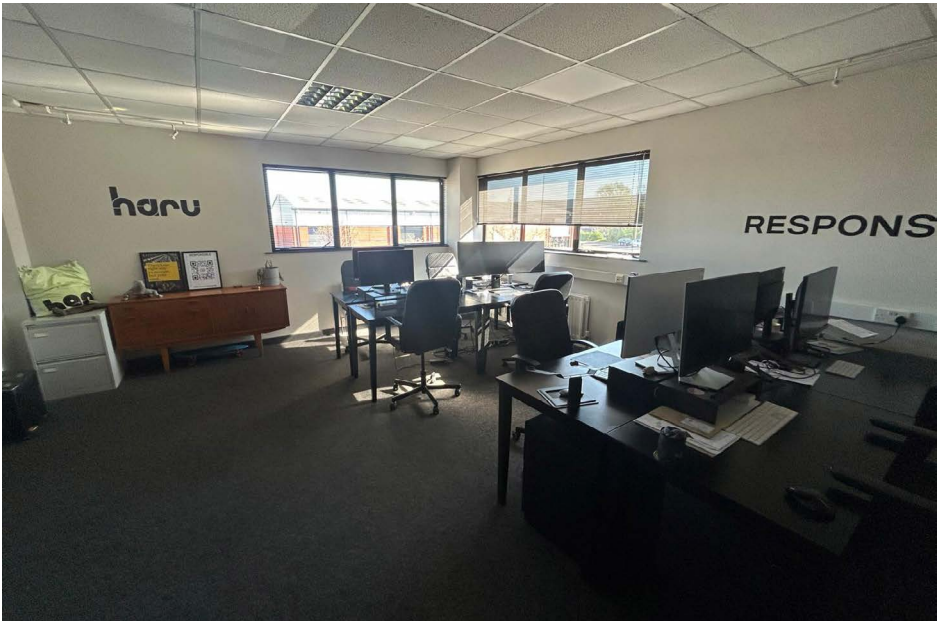
- Term: By negotiation.
- Rent: £42,000 per annum exclusive, subject to contract.
- Repairs: Full repairing terms. Tenant responsible for all repairs and maintenance to the property.
- Buildings Insurance: Tenant to reimburse the Landlord. Estimated at £2,000 pax.

Non Domestic Rates

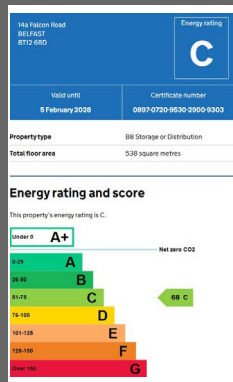
Rates payable for 2025/26 are approximately £17,681, excluding any reliefs that may be applicable.

VAT

We are advised that the property is currently VAT Registered.



## EPC



### McCombe Pierce LLP

Lombard House, 10-20 Lombard Street, Belfast BT1 1RD

+44 (0)28 9023 3455

[www.cushmanwakefield-ni.com](http://www.cushmanwakefield-ni.com)

For more information, please contact:

#### Mark Riddell

028 9023 3455

[mark.riddell@cushwake-ni.com](mailto:mark.riddell@cushwake-ni.com)

#### James Russell

028 9023 3455

[james.russell@cushwake-ni.com](mailto:james.russell@cushwake-ni.com)



**CUSHMAN &  
WAKEFIELD**



**McCOMBE  
PIERCE**

### Disclaimer

"McCombe Pierce LLP (and its subsidiaries and their joint Agents where applicable) for themselves and for the vendors or lessors of this property for whom they act, give notice that:

- (i) these particulars are a general outline only, for the guidance of prospective purchasers or tenants, and do not constitute the whole or any part of an offer or contract; McCombe Pierce LLP cannot guarantee the accuracy of any description, dimensions, references to condition, necessary permissions for use and occupation and other details contained herein and prospective purchasers or tenants must not rely on them as statements of fact or representations and must satisfy themselves as to their accuracy;
- (ii) no employee of McCombe Pierce LLP (and its subsidiaries and their joint Agents where applicable) has any authority to make or give any representation or warranty or enter into any contract whatever in relation to the property;
- (iv) rents quoted in these particulars may be subject to VAT in addition;
- (v) McCombe Pierce LLP (and its subsidiaries where applicable) will not be liable, in negligence or otherwise, for any loss arising from the use of these particulars; and the reference to any plant, machinery, equipment, services, fixtures or fittings at the property shall not constitute a representation (unless otherwise stated) as to its state or condition or that it is capable of fulfilling its intended function. Prospective purchasers/tenants should satisfy themselves as to the fitness of such items for their requirements."

### Customer due diligence:

As a business carrying out estate agency work we are required to verify the identity of both the vendor and purchaser as outlined in The Money Laundering, Terrorist Financing and Transfer of Funds (Information on the Payer) Regulations 2017 - <http://www.legislation.gov.uk/ukSI/2017/692/made>. Any information and documentation provided by you will be held for a period of five years from when you cease to have a contractual relationship with McCombe Pierce LLP. The information will be held in accordance with the General Data Protection Regulation (GDPR) on our client file and will not be passed to any other party, unless we are required to do so by law and regulation.