

Estate Agents &  
Mortgage Specialists

# Cowley

## 5 Thornhill Crescent

Stormont, BT5 7AS

**Price: OA £325,000**



## 5 Thornhill Crescent, Stormont

Detached villa on an extensive corner site to rear.

- Attractive panelled entrance hall with leaded light window
- Downstairs cloakroom with low flush w.c.
- Lounge with bay window
- Spacious living and dining room with feature fireplace and wooden flooring
- Conservatory off
- Luxury fitted kitchen and breakfast area with range of integrated appliances
- 3 Good sized bedrooms
- Spacious deluxe bathroom incorporating free standing bath and recessed shower cubicle
- PVC double glazed windows
- Oil fired central heating
- Extensive decked area to rear set on two levels

This stunning detached villa is located on an extensive corner site to the rear, offering plenty of space and privacy. Walking through the beautiful panelled entrance hall, you are greeted with an elegant leaded light window and convenient downstairs cloaks with a low flush w.c.

The attractive lounge boasts a large bay window, providing plenty of natural light, while the separate living room and dining area are perfect for entertaining guests. A conservatory off the dining room offers a peaceful oasis where you can relax and unwind after a long day.

The luxury fitted kitchen and breakfast area feature a range of integrated appliances, making meal preparation a breeze. Upstairs, there are three good-sized bedrooms, and a spacious deluxe bathroom that includes a shower cubicle and fabulous free-standing bath.

Outside, the property benefits from an extensive decked area on two levels, perfect for enjoying al fresco dining or simply soaking up the sun. This detached villa is the perfect family home, offering a beautiful living space both indoors and out.

---



GLAZED ENTRANCE PORCH:

ENTRANCE HALL:

Wooden floor, feature leaded light window, panelled walls.



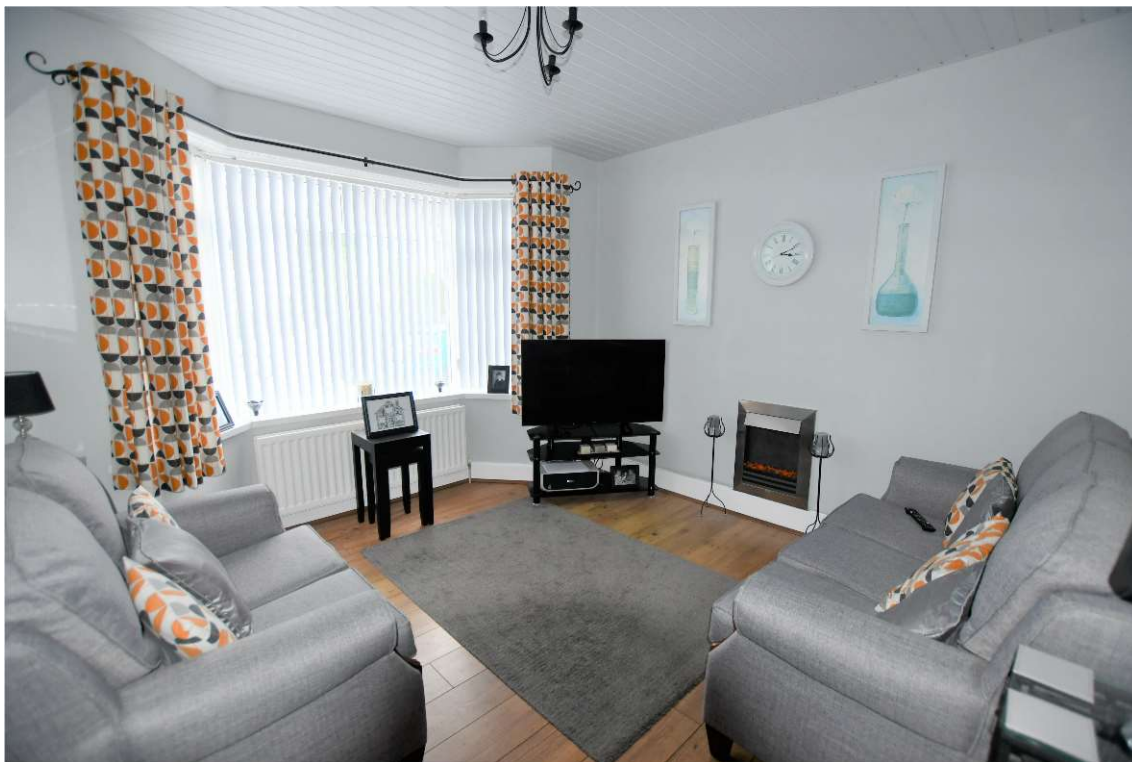
CLOAKROOM:

Low flush w.c., part tiled walls.



LOUNGE:

12'5" x 11'10" wooden floor, bay window, PVC ceiling.



LIVING ROOM:

20'4" x 11'2" wooden floor, feature mahogany fireplace, PVC French doors.





are you ready for a change

CONSERVATORY:

10'0" x 9'9" laminate floor.



KITCHEN:

19'9" x 7'0" single drainer stainless steel sink unit, mixer taps, superb range of fitted high and low level units, built in oven and hob, extractor hood, integrated fridge freezer, integrated washing machine, integrated dish washer, fully tiled walls, tiled floor, PVC ceiling, PVC back door.



FIRST FLOOR:

Leaded light window.

BEDROOM 1:

11'10" x 11'9" bay window, laminate floor, low voltage lighting, PVC ceiling.



BEDROOM 2:

12'4" x 11'4" built in cupboard and hot press copper cylinder, immersion heater, low voltage lighting, pine ceiling.



BEDROOM 3:

12'2" x 7'3" laminate floor, low voltage lighting, PVC ceiling.



**DELUXE BATHROOM:**

Free standing bath, vanity unit, low flush w.c., Fully tiled walls, tiled floor, recessed shower cubicle, low voltage lighting, pine ceiling.



OUTSIDE:

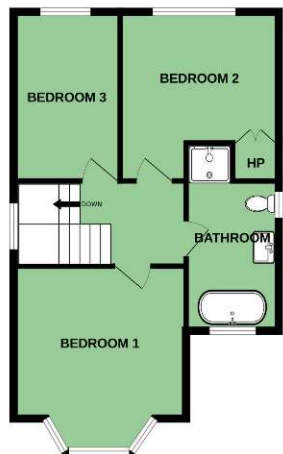
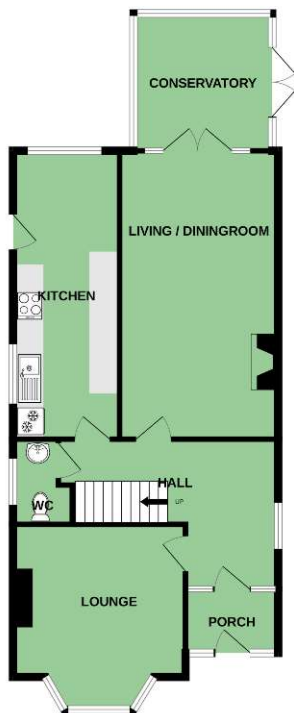
Feature decked area to rear on two levels with part artificial grass. Fencing, garden shed, outside light and water tap, boiler house, oil fired boiler, oil tank. Feature brick driveway.



GROUND FLOOR



1ST FLOOR



**East Belfast Office**  
36 Cregagh Road, Belfast, BT6 9EQ  
T: 028 9045 1248 F: 028 9073 9096

E: [info@cowleyproperty.com](mailto:info@cowleyproperty.com)  
W: [www.cowleyproperty.com](http://www.cowleyproperty.com)

Score	Energy rating	Current	Potential
92+	A		
81-91	B		
69-80	C		
55-68	D		64 D
39-54	E		
21-38	F	32 F	
1-20	G		



Keith Boyce DipPFS, Cert CII (MP)  
Financial Adviser  
36 Cregagh Road, Belfast, BT6 9EQ  
T: 028 9073 2225 F: 028 9073 9096

E: [keithboyce@mab.org.uk](mailto:keithboyce@mab.org.uk)  
W: [mortgageadvicebureau.com/keithboyce](http://mortgageadvicebureau.com/keithboyce)