

DEVELOPMENT SITE – FOR SALE

205-211 Crumlin Road

Belfast
BT14 7DX



www.cbre.co.uk/ni



@CBRE_NI

CBRE

DEVELOPMENT SITE – FOR SALE

205-211 Crumlin Road

Belfast
BT14 7DX



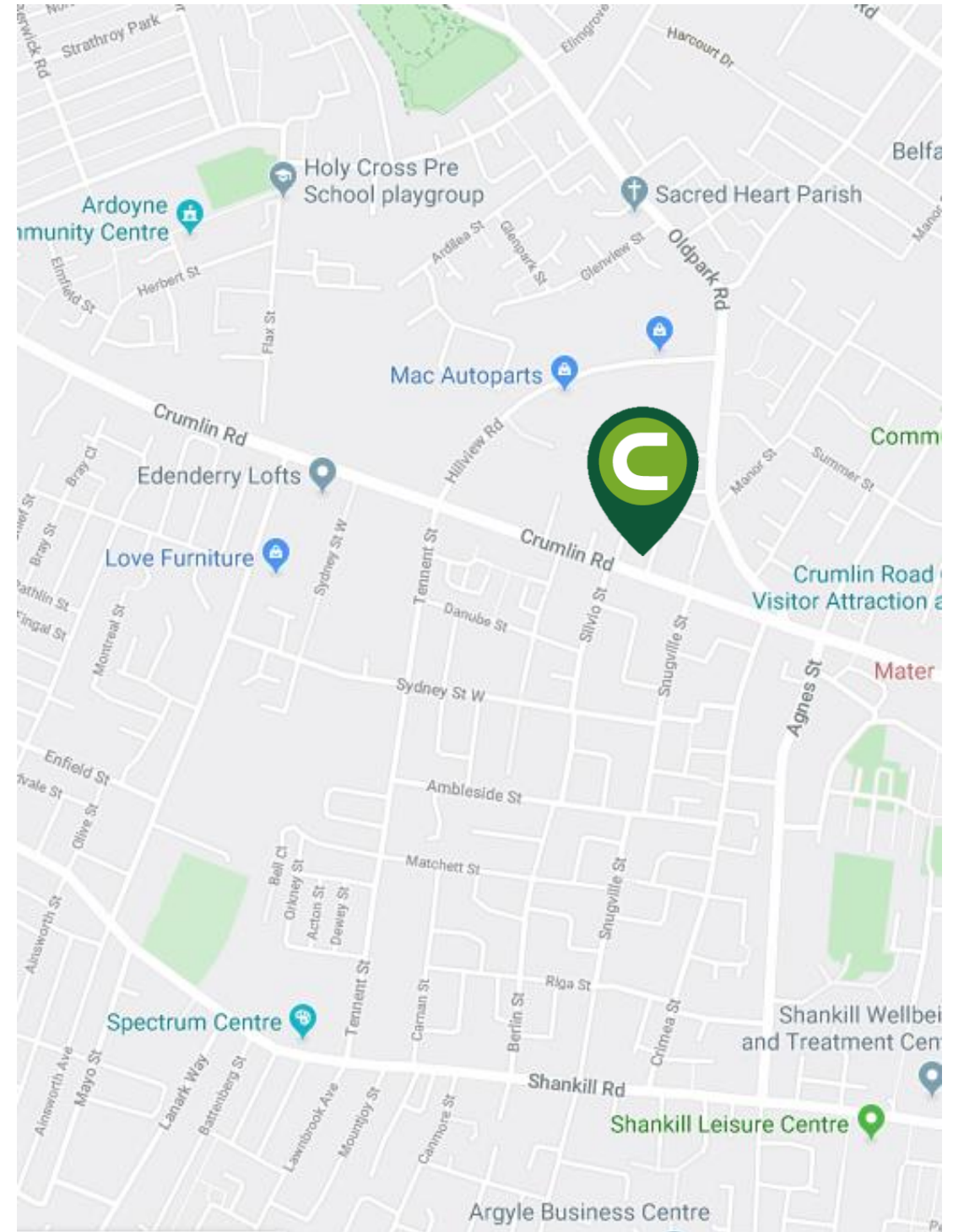
205-211 Crumlin Road

KEY BENEFITS

- Cleared Site c. 0.16 acres
- Full Planning Permission for development of 14 no. apartments
- Prominent location located on the Crumlin Road

LOCATION

The subject site is located on the Crumlin Road at the corner of Yarrow Street in North Belfast, approximately 1.5 miles from the city centre. Land use in the area comprises primarily of commercial properties fronting the Crumlin Road with residential properties in the surrounding streets and avenues. The site is situated close to the Mater Hospital and a range of local shops and services.



DEVELOPMENT SITE – FOR SALE

205-211 Crumlin Road

Belfast
BT14 7DX



Park Avenue, Belfast

DESCRIPTION

The subject site c. 0.16 acres with approx. 79 ft frontage to the Crumlin Road and approx. 67 ft frontage to Yarrow Street. The site has been cleared and benefits from Full Planning Permission for the development of a 4 storey building with 4 and a half storeys on front elevation to Crumlin Road (14 no. apartments: 10 no. 2 bed & 4no. 1 bed apartments). LA04/2017/0733/F. Plans are available on request.

TITLE

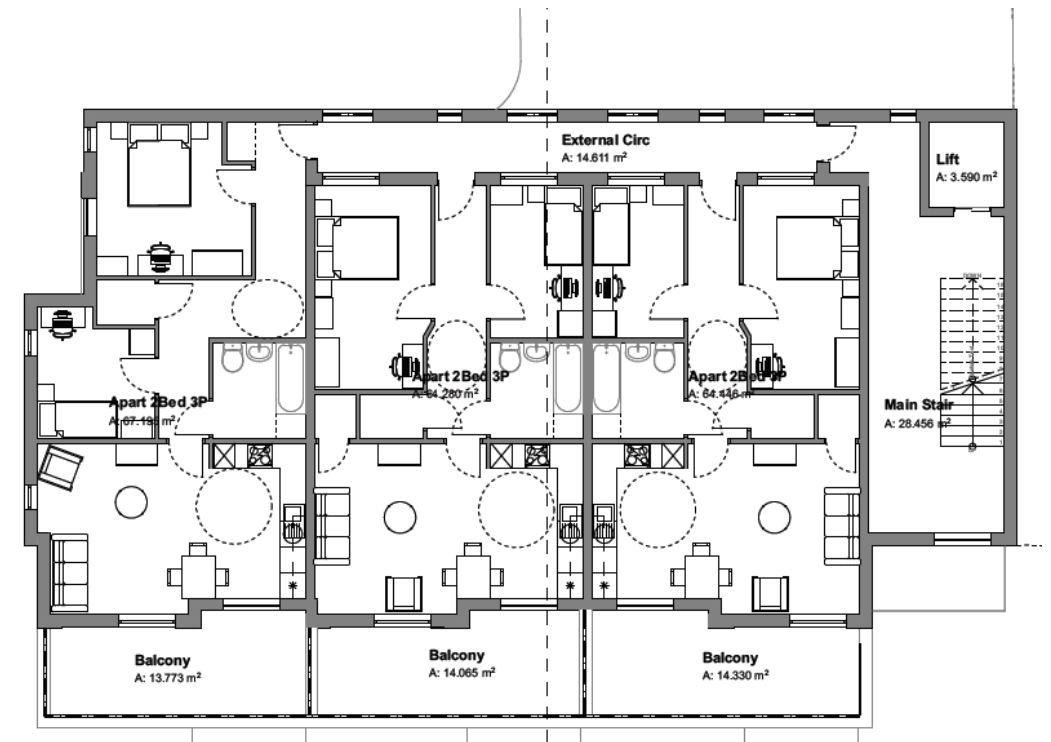
Assumed freehold or long leasehold subject to a nominal ground rent.

ASKING PRICE

We are inviting offers in the region of £150,000 exclusive.

VAT

All prices quoted are exclusive of VAT, which may be payable.



First floor plan



CONTACT US

David Wright

Director
t: 028 9043 6745
e: david.wright@cbre.com

© 2019 CBRE, Inc. All rights reserved. This information has been obtained from sources believed reliable, but has not been verified for accuracy or completeness. You should conduct a careful, independent investigation of the property and verify all information. Any reliance on this information is solely at your own risk.

Photos herein are the property of their respective owners and use of these images without the express written consent of the owner is prohibited.

November 2019
3153

www.cbre.co.uk/ni



@CBRE_NI

CBRE