

THE GRANGE

A6b / A6.1b

Handed Version



SALES AND INFORMATION

028 9042 8661

ANTRIMCONSTRUCTION.NET

Ref: 20250320



COMPUTER VISUAL

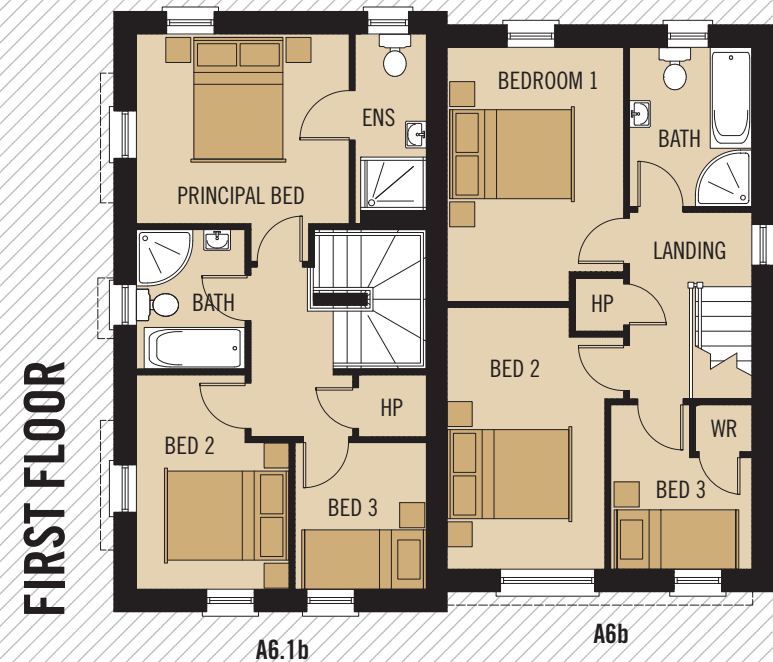
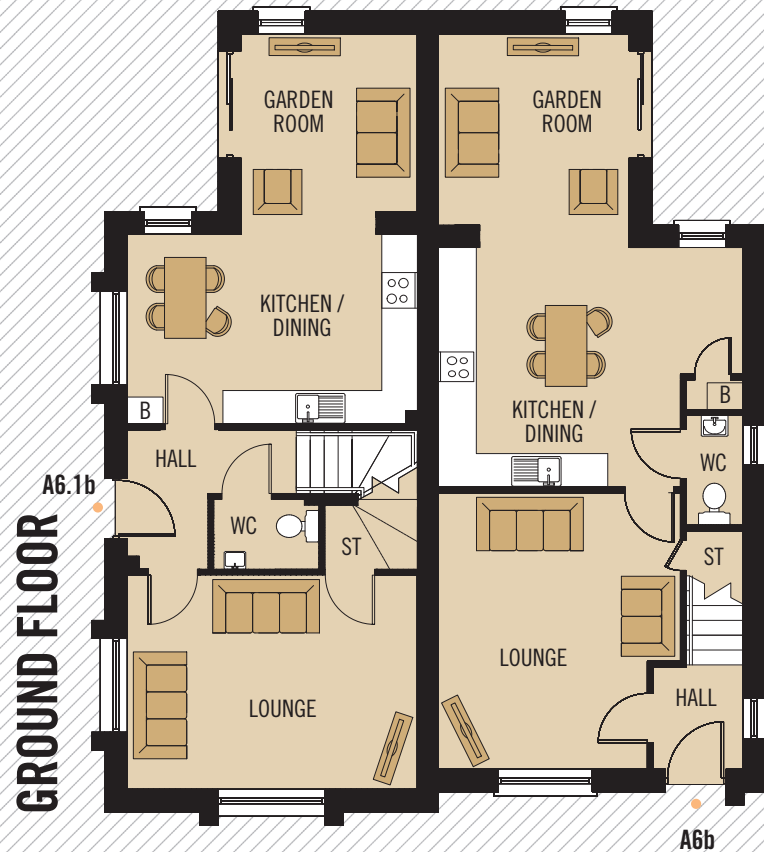
CHOOSE YOUR PERFECT
ANTRIM CONSTRUCTION HOME

ENLERBANK
OFF NEWTOWNARDS ROAD, COMBER BT23

THE GRANGE

A6b / A6.1b

ENLERBANK
OFF NEWTOWNARDS ROAD, COMBER BT23



GROUND FLOOR A6.1b

| | | |
|------------------|--------------|---------------|
| LOUNGE | 4.88 x 3.61M | 16'0" x 11'8" |
| KITCHEN / DINING | 4.88 x 3.91M | 16'0" x 10'4" |
| GARDEN ROOM | 3.37 x 3.05M | 11'0" x 10'0" |
| WC | 1.77 x 1.17M | 5'8" x 3'8" |

GROUND FLOOR A6b

| | | |
|------------------|--------------|-------------------|
| LOUNGE | 4.66 x 4.06M | 15'2" x 13'3" MAX |
| KITCHEN / DINING | 5.13 x 4.03M | 16'8" x 13'2" MAX |
| GARDEN ROOM | 3.60 x 3.25M | 11'8" x 10'7" |
| WC | 2.25 x 0.95M | 7'3" x 3'11" |

FIRST FLOOR A6.1b

| | | |
|-------------------|--------------|------------------|
| PRINCIPAL BEDROOM | 3.71 x 3.22M | 12'1" x 10'5" |
| ENSUITE | 3.22 x 1.20M | 10'5" x 3'9" |
| BEDROOM 2 | 3.61 x 2.57M | 11'8" x 8'4" MAX |
| BEDROOM 3 | 2.47 x 2.21M | 8'1" x 7'2" |
| BATHROOM | 2.35 x 1.80M | 7'7" x 5'9" |

FIRST FLOOR A6b

| | | |
|-----------|--------------|------------------|
| BEDROOM 1 | 4.28 x 2.97M | 14'0" x 9'7" MAX |
| BEDROOM 2 | 4.41 x 2.65M | 14'4" x 8'7" MAX |
| BEDROOM 3 | 2.37 x 1.88M | 7'7" x 6'1" MIN |
| BATHROOM | 2.68 x 2.06M | 8'7" x 6'7" |

TOTAL FLOOR AREA - A6b: 103m² OR 1,105 SQ FT APPROX.

TOTAL FLOOR AREA - A6.1b: 104m² OR 1,110 SQ FT APPROX.



WHILST EVERY CARE IS TAKEN IN PREPARING THIS INFORMATION, NO REPRESENTATION IS GIVEN, AND IT DOES NOT FORM ANY PART OF A CONTRACT. ANY INTENDING PURCHASER MUST SATISFY HIMSELF/HERSELF AS TO THE CORRECTNESS OF EACH OF THE STATEMENTS CONTAINED IN THESE PARTICULARS. WE RESERVE THE RIGHT TO ALTER SPECIFICATIONS WITHOUT DUE NOTICE.