



29 The Bay Seacliff Road, Bangor,
County Down, BT20 5HD

Asking Price: £250,000

 **Reeds Rains**

[reedsrains.co.uk](https://www.reedsrains.co.uk)

29 The Bay Seacliff Road, Bangor, County Down, BT20 5HD
Asking Price: £250,000 To be advised

EPC Rating: C

Description

Positioned on the prestigious Seacliff Road, 29 The Bay is a beautifully appointed second-floor duplex apartment offering contemporary coastal living with a front-row seat to one of Northern Ireland's most captivating sea views. This stylish three-bedroom home boasts a thoughtfully designed layout, with a spacious open plan kitchen, dining and living area that opens out to a private balcony — the perfect vantage point to take in panoramic vistas over Ballyholme Bay, across Belfast Lough and onward to the distant Scottish coast.

The accommodation is arranged over two floors and includes three well-proportioned bedrooms, two modern shower rooms, and a sleek kitchen with integrated appliances. Every detail is tailored for modern comfort, with gas-fired central heating and full double glazing throughout. An allocated parking space provides additional convenience in this sought-after location.

The true highlight of this property is undoubtedly the spectacular outlook. From sunrise to sunset, the ever-changing seascape offers a daily display of natural beauty, sailing activity and tranquil horizon lines. Ideal for professionals, downsizers, or those seeking a coastal retreat, this apartment is a rare opportunity to enjoy an exceptional lifestyle on Bangor's shoreline.

Communal Entrance

Staircase and lift to second floor.

Second Floor Entrance Hall

Double glazed door, stairs to upper floor. Under stairs storage area. Intercom system.

Bedroom Two

9'6" x 8'11" (2.9m x 2.72m)
Built-in storage cupboard.

Shower Room

Three piece contemporary white suite comprising fully tiled enclosed shower cubicle with thermostatically controlled shower unit, dual flush WC, rice bowl basin with mixer taps. Ceramic tiled floor and part tiled walls, recessed spotlights, extractor fan, stainless steel heated towel rail.

Bedroom Three

8'11" x 7'5" (2.72m x 2.26m)

Kitchen / Dining/ Lounge

20'6" x 19'11" (6.25m x 6.07m)
Single drainer 1.5 composite sink unit with mixer taps, excellent range of high and low level units with laminated work surfaces, built in oven and 4 ring ceramic hob, stainless steel chimney extractor fan, integrated dishwasher, integrated fridge, integrated freezer, integrated washing machine, breakfast bar, ceramic tiled floor. Open plan to living / dining area with stunning sea views across Belfast Lough towards Scotland. Double glazed door to Balcony.

Balcony

Private area with stunning views.

Upper Floor Landing

Access to eave storage with light and gas boiler.

Bedroom One

13'2" x 8'11" (4.01m x 2.72m)
Velux window, wall to wall fitted wardrobes with mirrored sliding doors.

Shower Room

Three piece contemporary white suite comprising fully tiled enclosed shower cubicle with thermostatically controlled shower and

Rain shower , dual flush WC, semi pedestal wash hand basin with mixer tap. Tiled floor and part tiled walls, heated towel rail, Velux window.

Outside

Allocated parking, and space for visitors parking.

NB

CUSTOMER DUE DILIGENCE As a business carrying out estate agency work, we are required to verify the identity of both the vendor and the purchaser as outlined in the following: The Money Laundering, Terrorist Financing and Transfer of Funds (Information on the Payer) Regulations 2017 - <https://www.legislation.gov.uk/ukxi/2017/692/contents>

To be able to purchase a property in the

For full EPC please contact the branch.

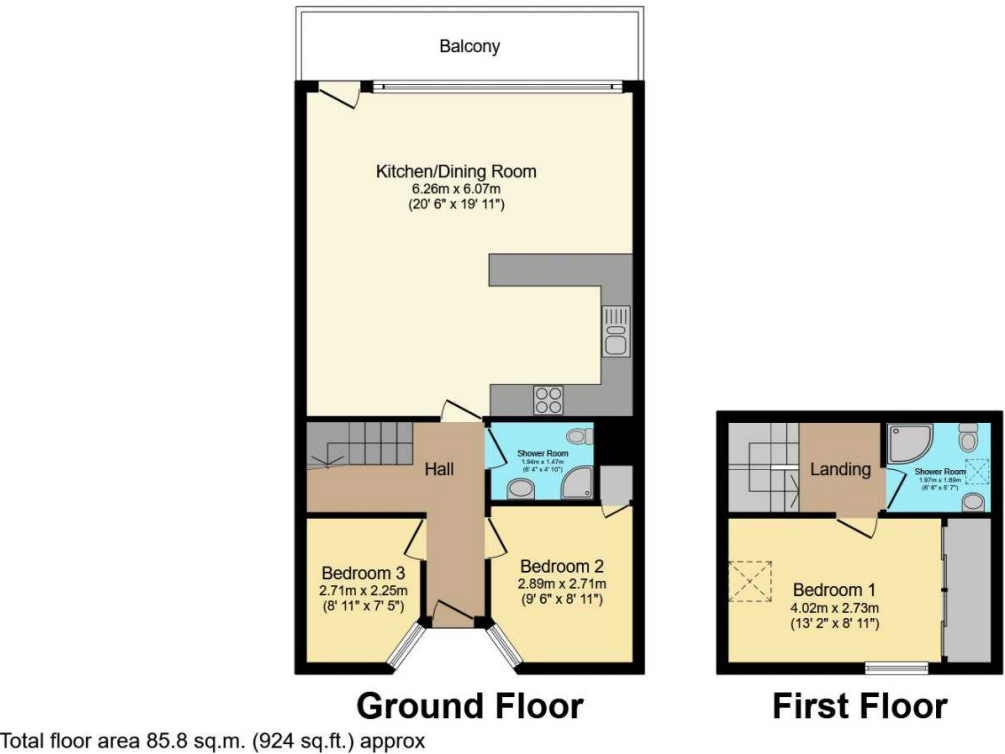
United Kingdom all agents have a legal requirement to conduct Identity checks on all customers involved in the transaction to fulfil their obligations under Anti Money Laundering regulations. We outsource this check to a third party and a charge will apply of £20 + Vat for each person.

The Reeds Rains branches at 350 Upper Newtownards Road, Ballyhackamore, Belfast, N Ireland BT4 3EX, 18 Main Street, Bangor, Co Down, N Ireland BT20 5AG, Somerset House, 240-242 Ormeau Road, Belfast, Co Antrim, N Ireland BT7 2FZ, 10 High Street, Carrickfergus, Co Antrim, N Ireland BT38 7AF, 8/8A Carnmoney Road, Glengormley, County Antrim, N Ireland BT36 6HN, 14/16 Market Street, Lisburn, County Antrim , N Ireland BT28 1AB and 2 Frances Street, Newtownards, County Down, N Ireland BT23 4JA are operated by Favsko NI Limited which is independently owned and operated under a Licence from Reeds Rains Limited.

All Measurements
All Measurements are Approximate.

Laser Tape Clause
All measurements have been taken using a laser tape measure and therefore, may be subject to a small margin of error.

Floorplan Clause
Measurements are approximate. Not to Scale. For illustrative purposes only.



This floor plan is for illustrative purposes only. It is not drawn to scale. Any measurements, floor areas (including any total floor area), openings and orientation are approximate. No details are guaranteed, they cannot be relied upon for any purpose and they do not form part of any agreement. No liability is taken for any error, omission or misstatement. A party must rely upon its own inspection(s).
Powered by www.focalagent.com