

DRUMNAGREAGH ROAD OFFERS OVER £279,950

BUNGALOW WITH OUTSTANDING SEA VIEWS !!! if that is what is on your wish list then you have got to view this property, Situated in Cairncastle, minutes walk to Matties Meeting House and easy access to all that Ballygally has to offer.

Detached Bungalow
Outstanding panoramic views over Ballygally and along the Causeway Coast
Open Plan Lounge / Dining / Kitchen
Three Bedrooms
Modern bathroom
Integral Garage
Generous outdoor space to front, at the back and to the side
May have potential to extend to either side or up (subject to necessary approvals)
Located on the Drumnagreah Road with easy transport links to Belfast and beyond
Three minutes drive to Ballygally Beach, Four minutes to Cairndhu Golf Club
Early viewing highly recommended

Electricity supply: Mains
Heating: Oil

Entrance hall

Entrance Porch with PVC door and tiled flooring

Bright fresh hallway with wood flooring

Lounge

Open plan Lounge and Dining space with outstanding sea views from dual windows. Laminate wood flooring.
Open layout to:

Kitchen

Modern white gloss kitchen. Excellent range of high and low level units with contrasting wood effect work surfaces. Four ring gas hob, stainless steel extractor fan and built in under oven. Feature lighting. Tiled flooring. Door to integral garage.

Bedroom 1

w: 3.86m x l: 3.79m (w: 12' 8" x l: 12' 5")

Generous room with Beautiful front rural and coastal views

Bedroom 2

w: 4.03m x l: 3.52m (w: 13' 3" x l: 11' 7")

Large Double room

Bedroom 3

w: 3.05m x l: 2.86m (w: 10' x l: 9' 5")

Another good size room

Shower

Modern fitted wet room. Electric shower with glass panel, vanity sink unit and low flush WC. Walls with feature effect tiling. Chrome Towel rail

Garage

Great size integral garage with roller shutter door to front, side window and PVC door to rear

Outside

Excellent site.

A great width of site, elevated just enough to give unforgettable panoramic views across the Irish Sea and along the Coastal line.

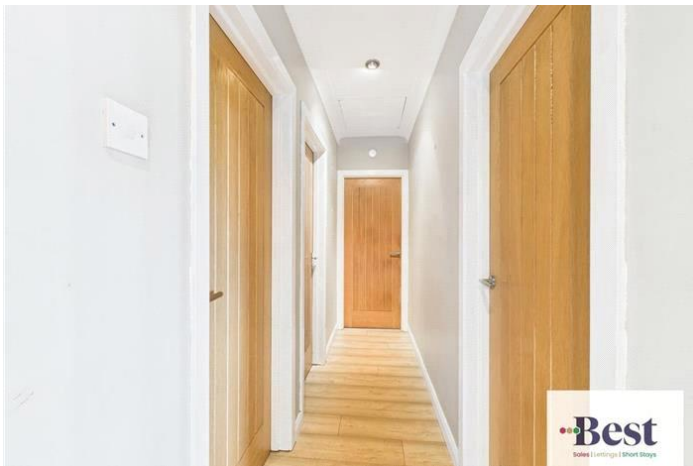
Front garden is extensive, laid in lawn, with a sweeping driveway providing ample parking

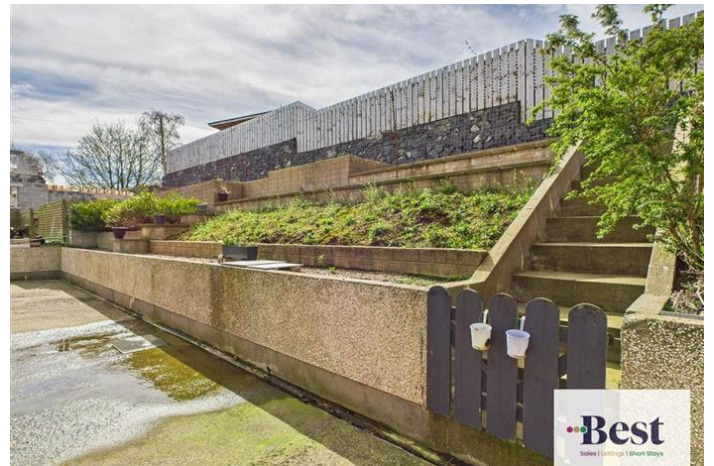
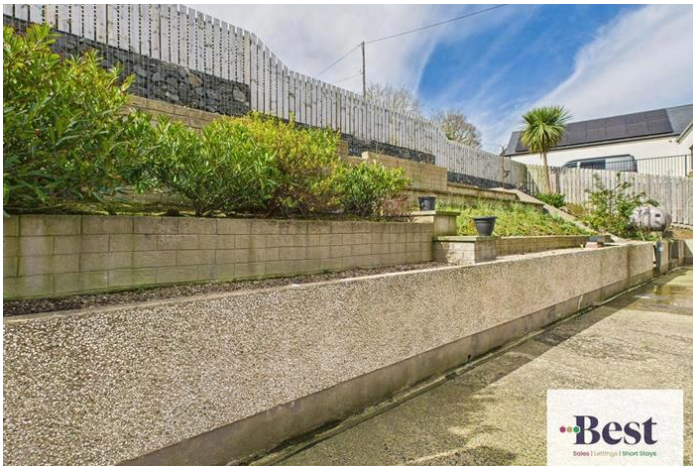
Rear garden is tiered providing the opportunity to create various levels and uses.

There is a large space to the side currently laid in patio and concrete areas. This benefits from all day sun and exceptional views.

The side area may be suitable for those who wish to extend (subject to necessary statutory approvals)

30-35 Minutes to Belfast or Ballymena, location within Cairncastle and Ballygally area and 8 minutes to Larne Town Centre this property will appeal to a wide variety of buyers and early viewing is highly recommended.









Approximate total area*
1240.98 ft²
115.29 m²

(*) Excluding balconies and terraces

While every attempt has been made to ensure accuracy, all measurements are approximate, not to scale. This floor plan is for illustrative purposes only.

Calculations are based on RICS IPMS 3C standard.

CIRAFE 360

