



To arrange a private
consultation appointment,
please contact
Armstrong Gordon on
028 7083 2000

FREE INDEPENDENT FINANCIAL ADVICE

Mortgage Services:

First Time Buys
Home Movers
Remortgaging
Holiday/ Second
Homes
Holiday Lets
Buy To Let
Co-Ownership

Other Financial Services:

Mortgage Protection
Life Insurance
Critical Illness Cover
Income Protection
Buildings & Content
Insurance
Landlord Insurance



**ARMSTRONG
GORDON**



64 The Promenade Portstewart BT55 7AF
T. 028 7083 2000

F. 028 7083 2950 E. info@armstronggordon.com W. www.armstronggordon.com

Score	Energy rating	Current	Potential
92+	A		
81-91	B		
69-80	C		
55-68	D	57 D	67 D
39-54	E		
21-38	F		
1-20	G		

COLERAINE

84 Gateside Road

BT52 2PD

Offers Over £235,000

Armstrong Gordon & Co. Ltd Estate Agents for themselves and for the vendors and for the lessors of this property whose agents they are given notice that: (1) the particulars are set out as a general outline only for the guidance of intending purchasers or lessees, and do not constitute, nor constitute part of an offer or contract; (2) all descriptions, dimensions, references to condition and necessary permissions for use and occupation and other details are given without responsibility and any intending purchaser or tenants should not rely on them as statements or representations of fact but must satisfy themselves by inspection or otherwise as to the correctness of each of them; (3) no person in the employment of Armstrong Gordon has any authority to give any representation or warranty whatever in relation to this property

028 7083 2000
www.armstronggordon.com

Nestled in the heart of the picturesque countryside, this charming semi detached residence at 84 Gateside Road, Coleraine offers an exceptional opportunity for those seeking space, privacy and convenience. Set on a very generous site, this well maintained home boasts breathtaking open countryside views, perfect for anyone who values peace and rural charm while remaining within easy reach of local amenities. The property benefits from a very large garage, offering ample room for storage, workshops or potential conversion for a variety of uses including hobby spaces, storage or business use.

Located just a short drive from Coleraine town centre and only a convenient distance to the stunning North Coast attractions of Portrush and Portstewart, this home offers the perfect balance between rural tranquillity and coastal accessibility.

Travelling out of Portrush towards Coleraine on the Ballywillan Road go past the former catering college site and at the top of the hill after the graveyard you will see the Orange Hall on the right hand side, continue on this road through Islandmore and the property will be located on your right hand side.

ACCOMMODATION COMPRISES:

Entrance Porch:

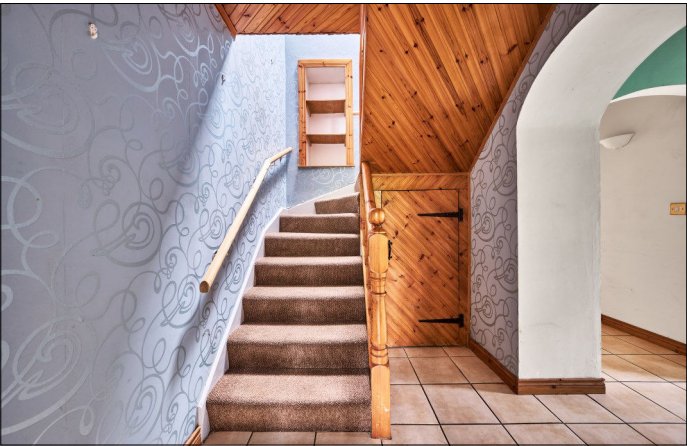
4'1 wide with tiled floor.

Entrance Hall:

3'6 wide with under stairs storage, tiled floor and pine sheeted ceiling with eyeball spotlights.

Bedroom 1:

With eyeball recessed spot lights, solid wood floor and pedestrian doors leading to rear decked area in garden. 22'10 x 13'8



Separate W.C.:

With w.c., floating wash hand basin with storage below, fully tiled walk in shower area with mains shower and low profile tray, heated towel rail, fully tiled walls, floating storage, shaver point, extractor fan, tiled floor and PVC sheeted ceiling.



Lounge:

With built in wardrobes, recessed lighting, 'Velux' window, solid wood floor and sliding patio door leading to rear garden. 20'2 x 12'8



Kitchen:

With bowl and half single drainer stainless steel sink unit, high and low level built in units with tiling between, integrated ceramic hob, eye level oven with brick surround, extractor fan above, space for fridge freezer, glass display cabinets, island with shelving and seating below, wine rack, feature beam ceiling and tiled floor.



Utility Room:

With single drainer stainless steel sink unit, plumbed for automatic washing machine, built in larder cupboard, PVC sheeted ceiling, extractor fan and tiled floor. 7'11 x 4'7

Dining Room:

With laminate wood floor. 9'8 x 9'6



FIRST FLOOR:

Landing:

With recessed shelving in stairwell, 'Velux' window and pine sheeted ceiling with access to roof space.

Bedroom 2:

With 'Victorian' style cast iron fireplace, laminate wood floor and pine sheeted ceiling with recessed eyeball spot lights. 16'0 x 10'11

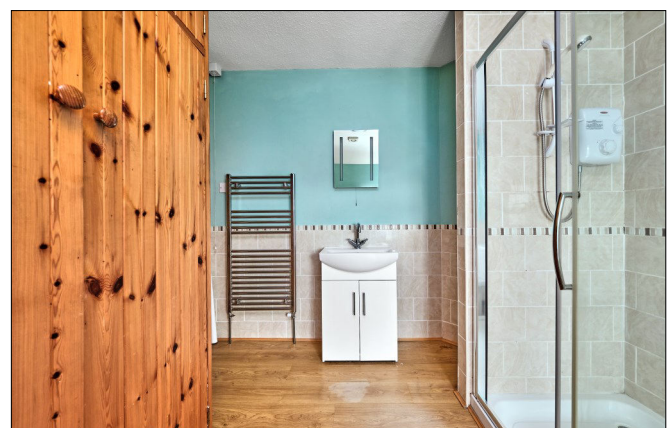
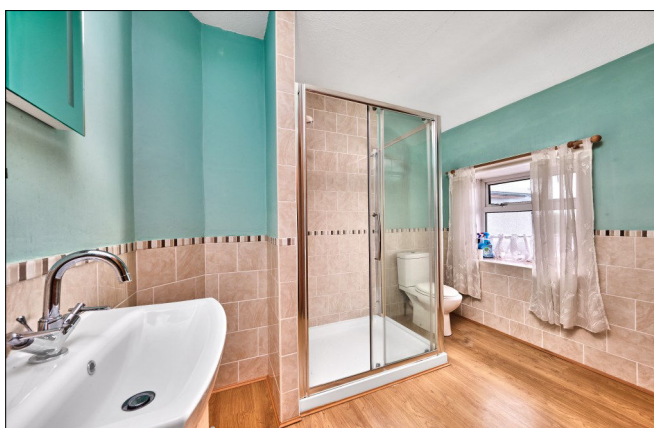


Bedroom 3:

With laminate wood floor. 10'3 x 9'11

Shower Room:

With white suite comprising w.c., wash hand basin with storage below and illuminated mirror above, fully tiled large walk in shower cubicle with electric shower, built in storage housing hot press, half tiled walls, heated towel rail, extractor fan and laminate wood floor.



EXTERIOR FEATURES:

Tarmac driveway leading to large garage/workshop with light, power and electric points. Extensive garden to rear with decked and paved patio areas. Outhouses to rear. Boiler and tap to rear. Light to front and rear. Garden to front is laid in lawn with two access driveways, surrounded by mature well established trees, plants and shrubbery.

SPECIAL FEATURES:

- ** Oil Fired Central Heating
- ** PVC Double Glazed Windows
- ** Extensive Workshop/Garage
- ** Approx. 1.5 Acres

TENURE:

Leasehold

CAPITAL VALUE:

£145,000 (Rates: £1483.35 p/a approx.)

