



To arrange a private  
consultation appointment,  
please contact  
Armstrong Gordon on  
028 7083 2000

FREE INDEPENDENT FINANCIAL ADVICE

Mortgage Services:

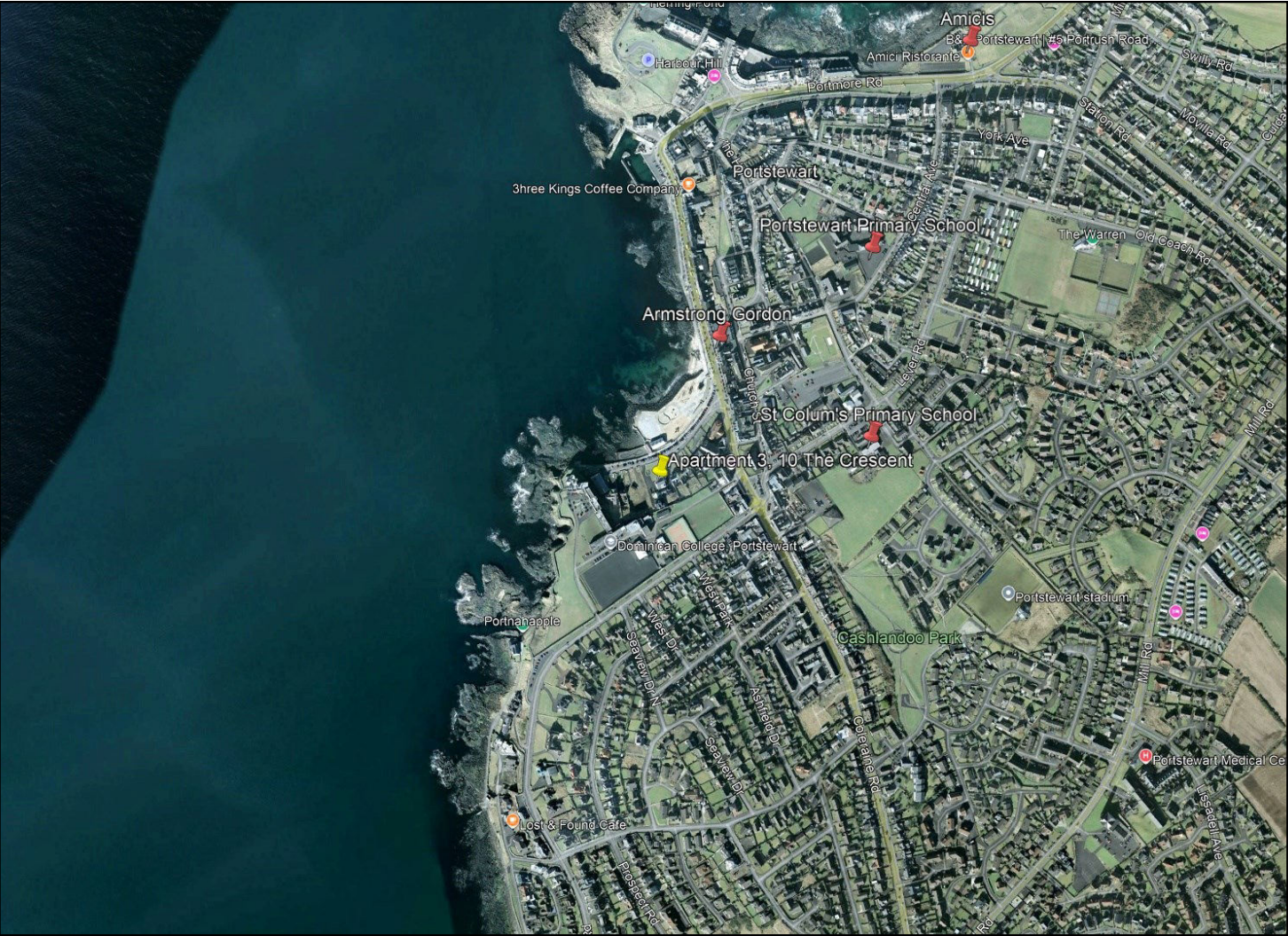
- First Time Buys
- Home Movers
- Remortgaging
- Holiday/ Second Homes
- Holiday Lets
- Buy To Let
- Co-Ownership

Other Financial Services:

- Mortgage Protection
- Life Insurance
- Critical Illness Cover
- Income Protection
- Buildings & Content Insurance
- Landlord Insurance



ARMSTRONG  
GORDON



64 The Promenade Portstewart BT55 7AF  
T. 028 7083 2000

F. 028 7083 2950 E. info@armstronggordon.com W. www.armstronggordon.com

Armstrong Gordon & Co. Ltd Estate Agents for themselves and for the vendors and for the lessors of this property whose agents they are given notice that: (1) the particulars are set out as a general outline only for the guidance of intending purchasers or lessees, and do not constitute, nor constitute part of an offer or contract; (2) all descriptions, dimensions, references to condition and necessary permissions for use and occupation and other details are given without responsibility and any intending purchaser or tenants should not rely on them as statements or representations of fact but must satisfy themselves by inspection or otherwise as to the correctness of each of them; (3) no person in the employment of Armstrong Gordon has any authority to give any representation or warranty whatever in relation to this property



Score	Energy rating	Current	Potential
92+	A		
81-91	B		
69-80	C	72 C	74 C
55-68	D		
39-54	E		
21-38	F		
1-20	G		

PORTSTEWART

Crescent House

Flat 3, The Crescent

BT55 7AB

Offers Over £550,000

028 7083 2000  
www.armstronggordon.com



A fantastic opportunity to acquire a fabulous ground floor three bedroom apartment extending to approximately 1340 sq. ft of living space which has been finished to a great specification throughout. Situated within a building of only five residences, the property also offers panoramic views across the Atlantic Ocean, Promenade, Donegal Headlands and over towards the harbour. Constructed circa 1995, the interior offers a very relaxing and spacious atmosphere right through. Location wise, you are situated practically in the heart of Portstewart. On your doorstep you have The Promenade with an array of local amenities including shops, bars, restaurants and coffee houses. This really is a property which ticks all the right boxes in terms of size, design, location and comfort, so would therefore encourage those seeking this type of living environment to contact ourselves for early internal appraisal.

Approaching Portstewart from either Coleraine or Portrush, proceed onto the town’s Promenade. Take a right into the Crescent at the Town Hall and 10 The Crescent will be the sixth building on your left hand side after Portstewart Town Hall.

ACCOMMODATION COMPRISES:

GROUND FLOOR:

Communal Entrance Hall:

With stair access to all floors.

Entrance Hall:

7’10 wide with cornicing, centrepieces and tiled floor.

Separate W.C:

With wash hand basin with tiled surround, storage cupboard housing gas boiler, extractor fan and tiled floor.

Open Plan Lounge/Kitchen/Dining Area:

25’1 max x 20’4 into bay

Lounge/Dining Area:

With marble surround fireplace with marble inset and heart, cornicing, centrepieces, recessed lighting in bay, tiled floor and PVC pedestrian door leading to paved patio with panoramic views across Atlantic Ocean, Donegal Headlands, The Crescent and Portstewart Promenade.



Kitchen/Dining Area : 16’2 x 13’1 (L-Shaped)

With pane panel glass door and panels to side from hallway, bowl and half single drainer stainless steel sink unit, high and low level built in units, integrated ceramic hob, double oven, integrated fridge freezer and dishwasher, plumbed for automatic washing machine, shelving, tiled floor, cornicing and PVC pedestrian door to rear paved area.



Bedroom 1:

With built in furniture consisting of three double wardrobes with part mirrored and cornicing. 15’7 x 9’8



Shared Main Bathroom/Ensuite:

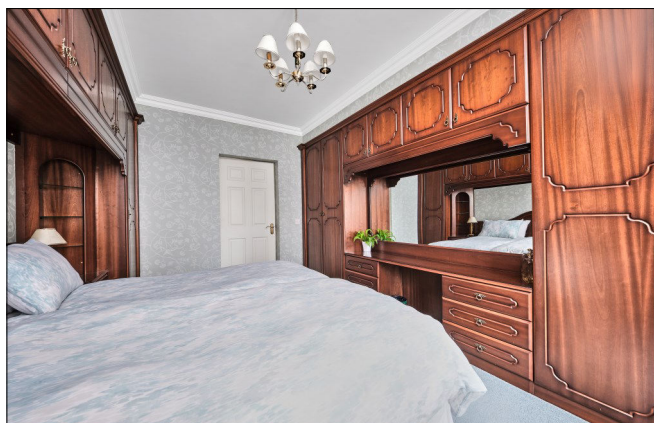
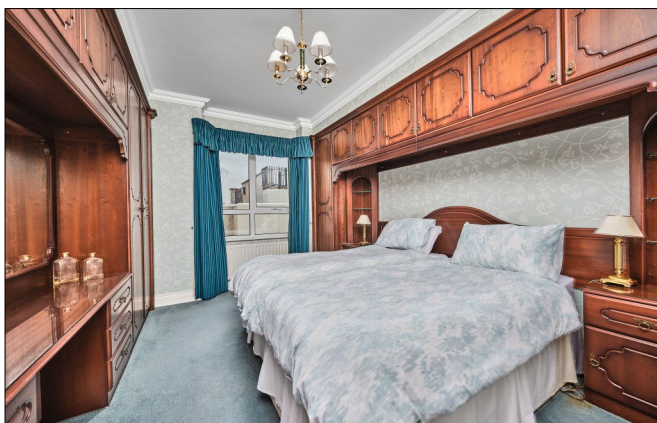
With white suite comprising w.c., wash hand basin set in vanity unit with storage below, fully tiled large walk in shower area with electric shower, half tiled walls, heated towel rail, extractor fan and tiled floor.





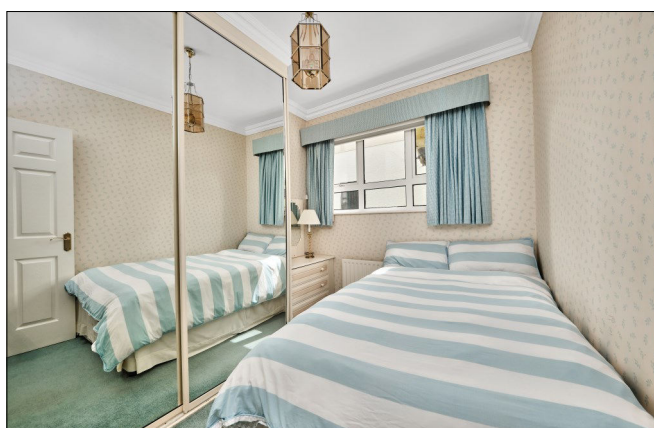
### **Bedroom 2:**

With built in furniture consisting of two double wardrobes, one single wardrobe, dressing area with mirror above, chest of drawers below and overhead storage and cornicing. 14'1 x 10'5



### **Bedroom 3:**

With built in mirrored slide robes, chest of drawers with mirror above and cornicing. 9'4 x 8'1



### **EXTERIOR FEATURES:**

Parking to front of property. Two allocated spaces. Large grassed garden to front. Outhouse to side of property with lights and shelving. Tap to rear.

### **SPECIAL FEATURES:**

- \*\* Gas Fired Central Heating
- \*\* PVC Double Glazed Windows To Front
- \*\* Panoramic Views Across Atlantic Ocean, Donegal Headlands, The Crescent & Portstewart Promenade
- \*\* Excellent Decorative Order Throughout

### **TENURE:**

Leasehold

### **CAPITAL VALUE:**

Not Assessed

### **MANAGEMENT COMPANY:**

Please note that all purchasers will become Shareholders in a Management Company formed to provide buildings insurance and maintain communal areas etc. Details of the annual Service Charge and full management services are available on request.

**Current service charge is £950.00 per annum approx. (16.06.25)**



