



To arrange a private
consultation appointment,
please contact
Armstrong Gordon on
028 7083 2000

FREE INDEPENDENT FINANCIAL ADVICE

Mortgage Services:

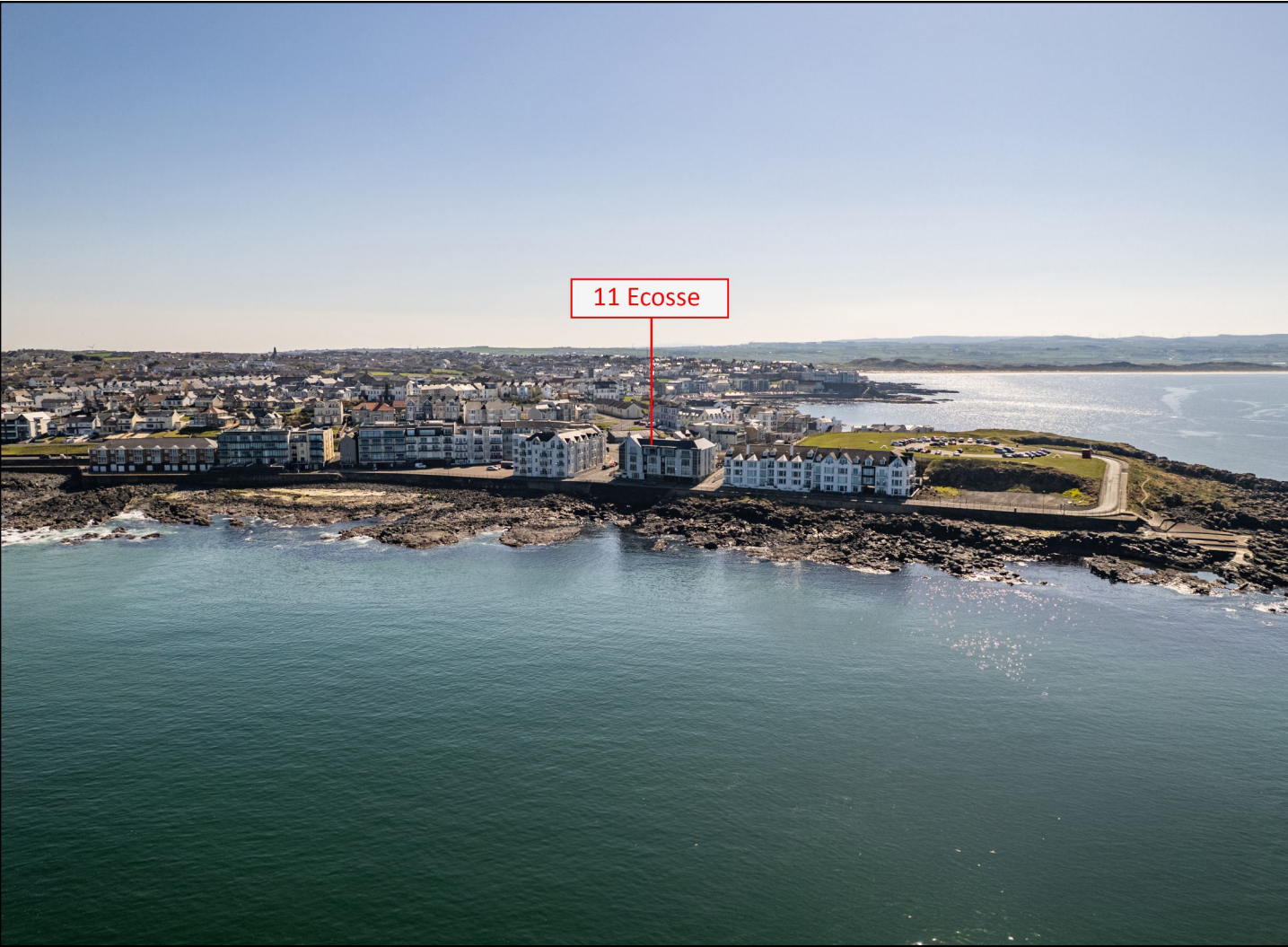
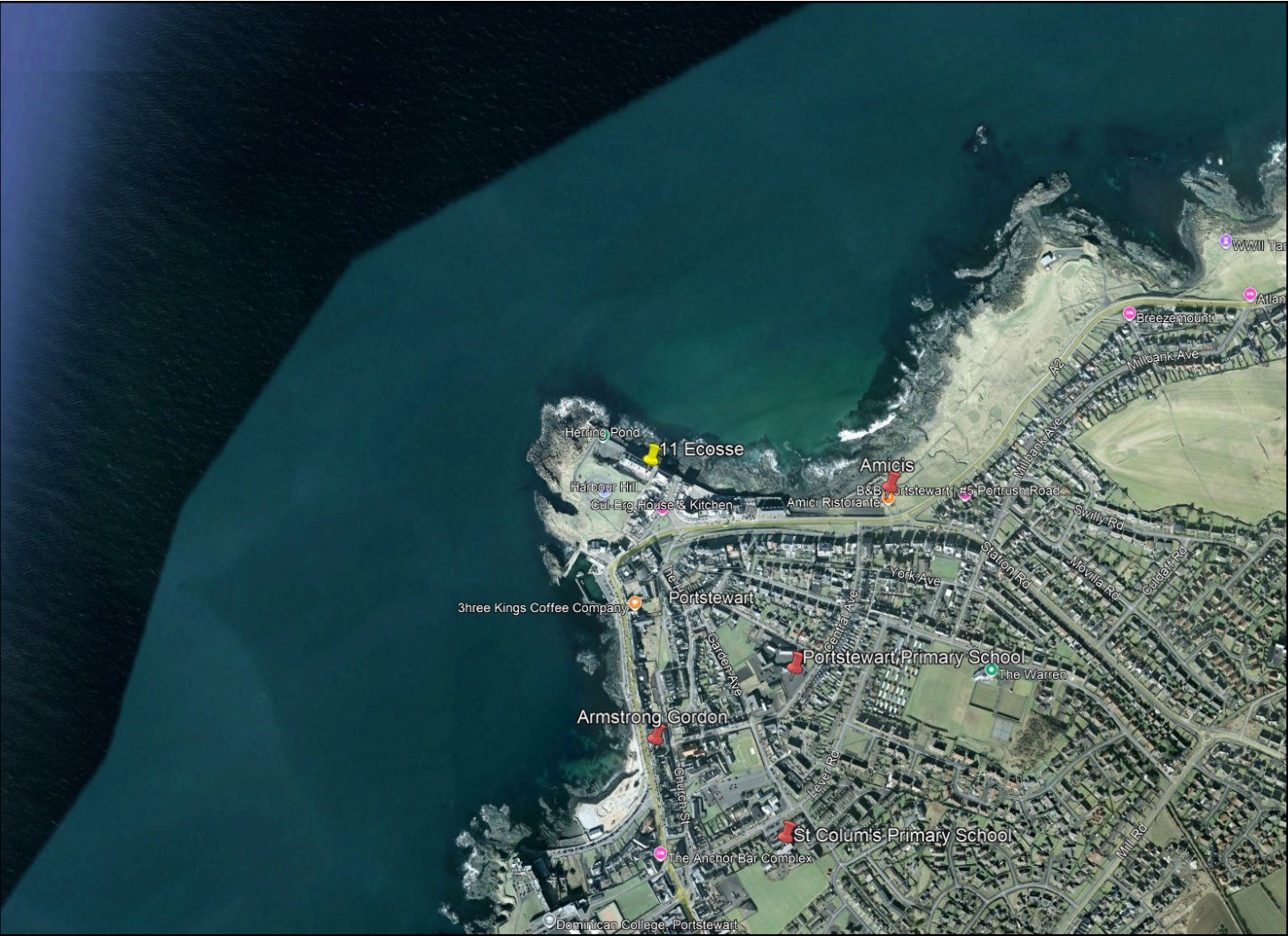
First Time Buys
Home Movers
Remortgaging
Holiday/ Second
Homes
Holiday Lets
Buy To Let
Co-Ownership

Other Financial Services:

Mortgage Protection
Life Insurance
Critical Illness Cover
Income Protection
Buildings & Content
Insurance
Landlord Insurance



ARMSTRONG
GORDON



64 The Promenade Portstewart BT55 7AF
T. 028 7083 2000

F. 028 7083 2950 E. info@armstronggordon.com W. www.armstronggordon.com

| Score | Energy rating | Current | Potential |
|-------|---------------|---------|-----------|
| 92+ | A | | |
| 81-91 | B | | |
| 69-80 | C | | |
| 55-68 | D | 59 D | 62 D |
| 39-54 | E | | |
| 21-38 | F | | |
| 1-20 | G | | |

PORTSTEWART

11 Ecosse
Kinora Terrace
BT56 8FH
Offers Over £375,000

Armstrong Gordon & Co. Ltd Estate Agents for themselves and for the vendors and for the lessors of this property whose agents they are given notice that: (1) the particulars are set out as a general outline only for the guidance of intending purchasers or lessees, and do not constitute, nor constitute part of an offer or contract; (2) all descriptions, dimensions, references to condition and necessary permissions for use and occupation and other details are given without responsibility and any intending purchaser or tenants should not rely on them as statements or representations of fact but must satisfy themselves by inspection or otherwise as to the correctness of each of them; (3) no person in the employment of Armstrong Gordon has any authority to give any representation or warranty whatever in relation to this property

028 7083 2000
www.armstronggordon.com

A delightful and stunning 2 bedroom third floor penthouse apartment with panoramic views of Atlantic Ocean, Portstewart Old Town Golf Course, Portrush and even the Scottish Headlands on a clear day. This modern apartment offers tasteful styling with contemporary fittings and fixtures throughout, beautiful design and neutral interior decor. Constructed circa 2003, the property benefits from secure and private low level parking with an electrically operated sliding door. Within proximity to the Promenade and most local amenities the selling agents strongly recommend early internal inspection.

Approaching Portstewart from Coleraine on the Station Road, turn left at the bottom onto Portmore Road which follows on to the Portrush Road. Heading into Portstewart, take your first right after Amici Restaurant into Atlantic Circle and stay right heading towards the ocean. The Ecosse building will be on the corner on your left hand side.

ACCOMMODATION COMPRISES:

GROUND FLOOR:

Communal Entrance Hall:

With tiled floor, lift and stair access to all floors.

THIRD FLOOR:

Entrance Hall:

3'2 wide with solid wood floor and glass blocks through to:



Open Plan Lounge/Kitchen/Dining Area: 22'2 x 18'6

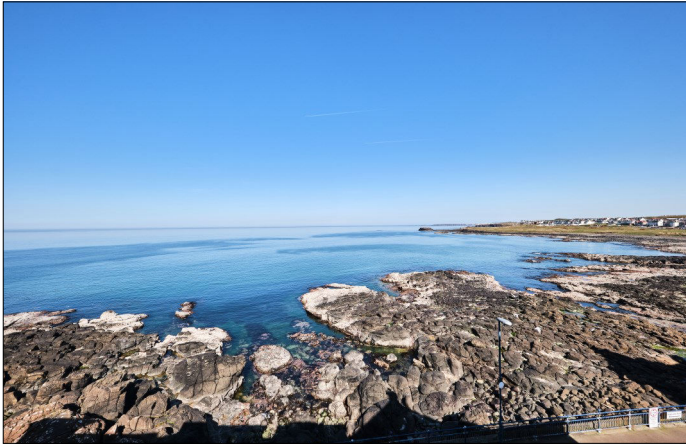
Kitchen/Dining Area:

With circular bowl and half circular stainless steel sink unit set in granite worktop, high and low level built in units with tiling between, granite breakfast bar with seating for multiple people, space for gas 'Smeg' range, stainless steel splashback and extractor fan above, space for American style fridge freezer, integrated dishwasher and washing machine, drawer bank, over head storage, over unit lighting and recessed lighting.



Lounge:

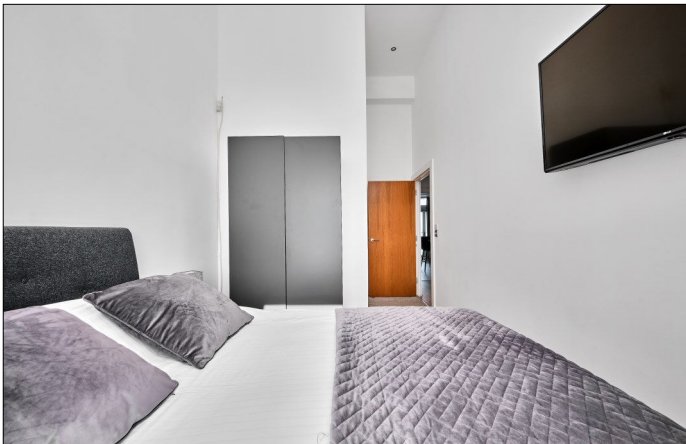
With laminate wood floor, wired for wall lighting, dimmer control panel, storage housing gas boiler and full wall sun fold doors opening onto decked area with panoramic views across Atlantic Ocean, Coast Road and Portrush.



Bedroom 1:

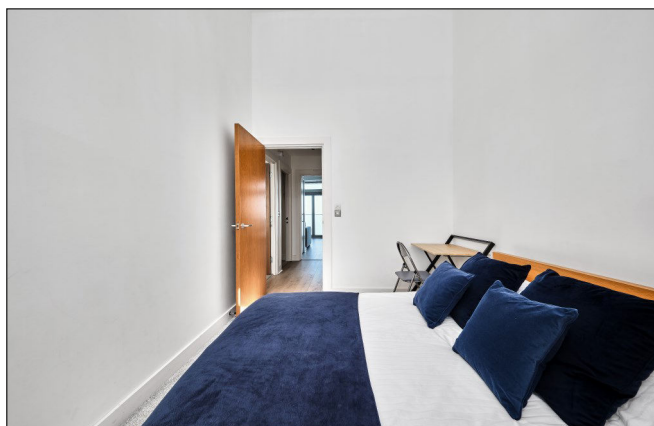
With recessed lighting and 'Velux' window. 17'6 x 8'9

Ensuite off with w.c., wash hand basin with tiled splashback, illuminated mirror above, fully tiled walk in shower cubicle with mains shower, shaver point, recessed lighting and tiled floor



Bedroom 2:

With recessed lighting and 'Velux' window. 13'0 x 8'8



Bathroom:

With white suite comprising w.c., wash hand basin with tiled splashback and storage below, telephone hand shower over 'Jacuzzi' style bath, part tiled walls, shaver point and light, extractor fan, recessed lighting and tiled floor.



EXTERIOR FEATURES:

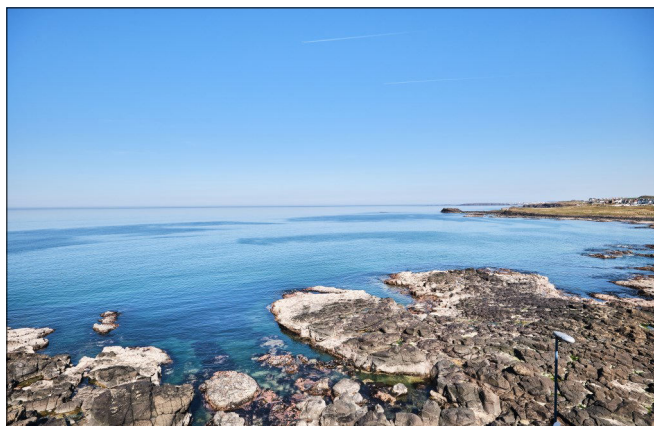
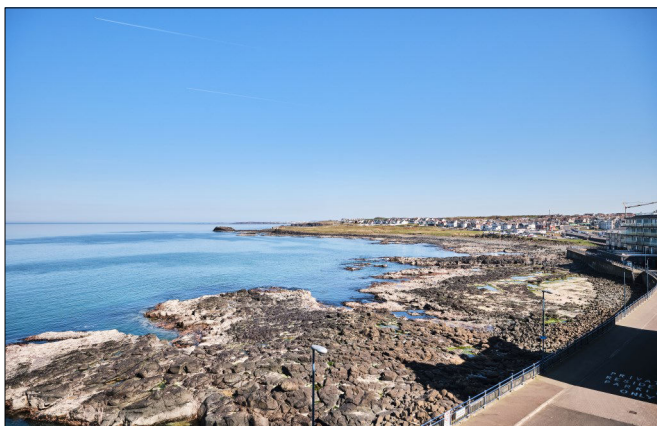
Allocated car parking space.

SPECIAL FEATURES:

- ** Gas Fired Central Heating
- ** PVC Double Glazed Windows
- ** Panoramic Views Across Atlantic Ocean, Coast Road & Portrush
- ** Private Parking Accessed By Electric Operated Gates

TENURE:

Leasehold



CAPITAL VALUE:

£200,000 (Rates: £1960.80 p/a approx.)

MANAGEMENT COMPANY:

Please note that all purchasers will become Shareholders in a Management Company formed to provide buildings insurance and maintain communal areas. Details of the annual Service Charge and full management services are available on request. **Current Service Charge is £3,000.00 (14.04.25)**

We advise all purchasers to make themselves aware of any rental and domestic pet restrictions within communal lease before proceeding.

