

028 9756 8300

Estate Agent of the Year
Northern Ireland 2016

Tim Martin
.co.uk

CELEBRATING 30 YEARS IN BUSINESS



'Quoile Quay Farm' 114 Strangford Road
Downpatrick BT30 7JD

OFFERS
AROUND

£700,000

A quality 34¾ acre agricultural holding with a fine detached single storey residence and extensive range of modern and more traditional out-housing, cattle houses and silos.

The residence is tastefully presented and offers spacious, well appointed accommodation including 3 reception rooms with open plan farmhouse integrated kitchen and dining room, laundry room, four bedrooms, bathroom and shower room. Oil fired central heating and double glazing have been fitted. The property sits in mature grounds with excellent privacy.

An extensive farmyard approached from a separate entrance includes a fine range of cattle housing, stores, silos, lofts and cattle handling facilities situated around concrete yards.

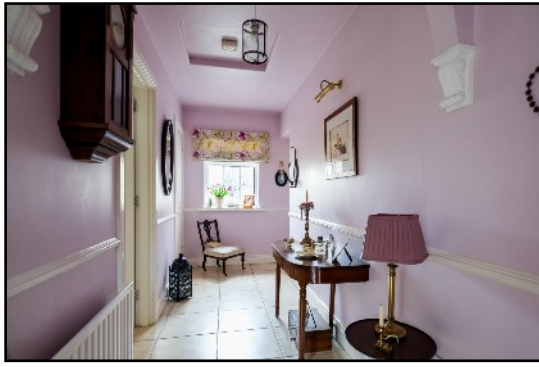
The lands are top quality and are well known to produce fine cereal and grass crops.

The property is convenient to Downpatrick and an easy commute to the city. The Lecale area is well known for low rainfall and micro climate coming off Strangford Lough.

1B Main Street, Saintfield, BT24 7AA

Email: info@timmartin.co.uk

Follow us:   



ACCOMMODATION

RECEPTION HALL

Ceramic tiled floor; built in cloak cupboard; dado rail; boiler housing with Unidare Jetmatic oil fired boiler; picture light.

FAMILY ROOM

4.65m (15'3) x 3.56m (11'8) including bay window
Embossed cast iron fireplace with matching canopy, botanical tiled panels and grey marble hearth, carved hardwood chimney piece; tv aerial and telephone connection points; door to:-



DRAWING ROOM 4.67m (15'4) x 4.37m (14'4)

Cast iron enclosed stove on raised stone tiled hearth, timber surround; stone tiled floor; French door to rear garden; pierced radiator covers; vaulted ceiling furnished with pine tongue and groove panelling.



KITCHEN 4.45m (14'7) x 3.58m (11'9)

1½ tub single drainer stainless steel sink unit with chrome swan neck mixer taps; good range of painted finish high and low level cupboards and drawers, matching glazed display cupboards, open display shelves, spice rack and high level plate rack; formica worktops; integrated Hoover electric under oven and Belling 4 ring ceramic hob in tiled recessed with extractor unit and light over; plumbed for dishwasher; part tiled walls; ceramic tiled floor; under cupboard concealed lighting.



DINING ROOM 4.72m (15'6) x 3.61m (11'10)

Engineered wood floor; French door to rear garden.



LAUNDRY ROOM 3.66m (12'0) x 2.06m (6'9)

Single drainer stainless steel sink unit with chrome mono mixer tap; range of painted finish eye and floor level cupboards; formica worktops; part tiled walls; ceramic tiled floor.



BATHROOM 3.15m (10'4) x 2.95m (9'8)

White suite comprising painted tongue and groove panelled bath with chrome pillar mixer taps and telephone shower attachment; close coupled wc; tiled shower cubicle with Triton electric shower and glass shower door; vanity unit fitted with wash hand basin with chrome mono mixer tap; nest of two drawers under, vanity light over; wainscot wall panelling to dado rail; hotpress with lagged copper cylinder and Willis type immersion heater; extractor fan.



REAR HALL

Ceramic tiled and wood laminate flooring; built in storage cupboard.

BEDROOM 1 3.94m (12'11) x 3.28m (10'9)

Dado rail; arched display recess.



BEDROOM 2 5.46m (17'11) x 2.97m (9'9)

Wood laminate floor; pierced radiator cover; display recess.



BEDROOM 3 3.28m (10'9) x 2.97m (9'9)

Wood laminate floor; shelved display recess.



BEDROOM 4 4.37m (14'4) x 3.07m (10'1)

2 double and single built in wardrobes with matching shelved cupboard; wood laminate floor.

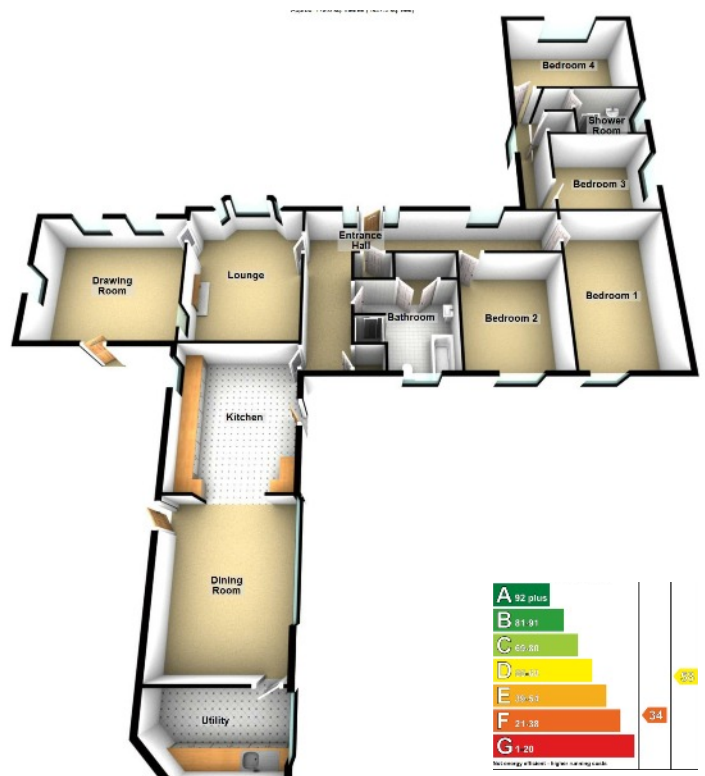


SHOWER ROOM 2.26m (7'5) x 1.88m (6'2)

White suite comprising tiled shower cubicle with Essentials electric shower, etched shower door and side panel; pedestal wash hand basin with brass taps; close coupled wc; ceramic tiled floor.

OUTSIDE

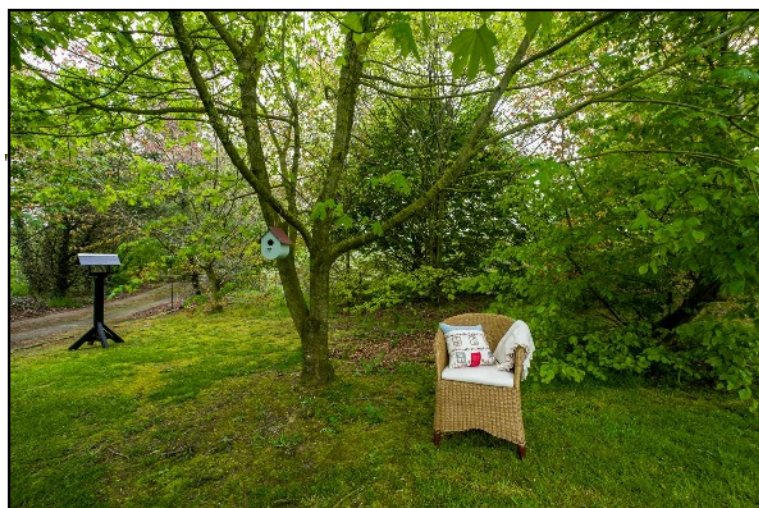
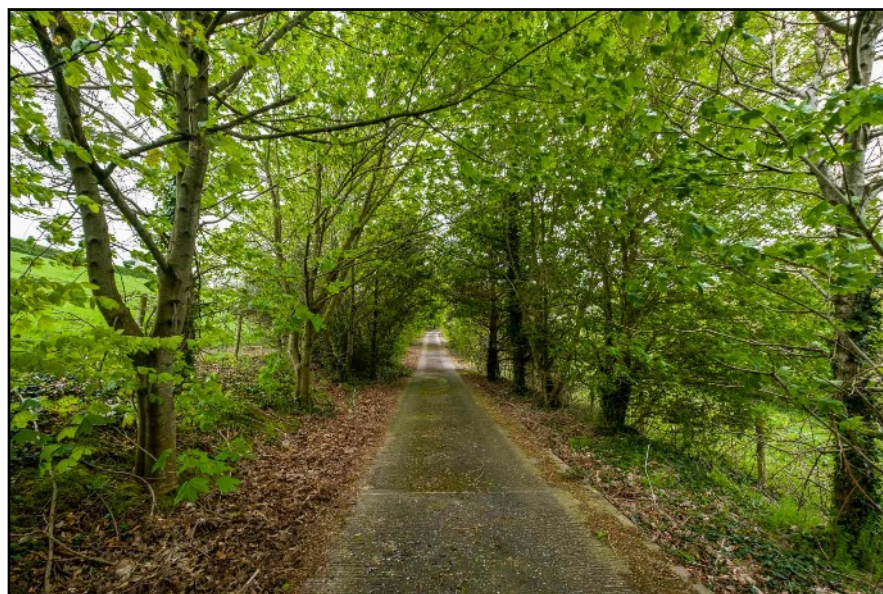
Private tree lined concrete drive and concrete parking to front of residence including Field Maple, Chestnut, Larch, Beech and Scots Pine.



GARDENS

Mature gardens to front laid out in lawns and planted with a fine selection of shrubs including Roses, Magnolia, Clematis, Virginia Creeper, Ivies, Cotoneaster etc and hard landscaped with York Stone flagged patio leading to front door; stone and brick steps to lawns and random stone edging to lawns.

Wooden gate to yard.



Separate shared concrete and bitmac lane to:-

CONCRETE FARMYARD

Partially enclosed with a range of outbuildings including:-

STORE Steel steps to loft.

GARAGE

RANGE OF THREE LOOSEBOXES

Fitted automatic drinking troughs.

WORKSHOP

OPEN FRONTED CATTLE HOUSE 8.69m (28'6) x 5.03m (16'6)

Divided into two pens.

OPEN FRONTED CATTLE HOUSE 23.16m (76'0) x 4.88m (16'0)

Divided into 4 pens; automatic drinking troughs.

SLATTED HOUSE 18.29m (60'0) x 10.67m (35'0)

Divided into 4 pens with built in meal troughs, water drinker and silage passage to front; vented roof; concrete enclosed yard to side.

HAYSHED 10.67m (35'0) x 7.09m (23'3)

Door to front; light points; loft 1 over.

SILO 17.98m (59'0) x 5.08m (16'8)

Concrete ramp to rear; vented roof; light point.

CATTLE HOUSE 17.68m (58'0) x 7.85m (25'9)

Built in meal trough; light and power points.

CATTLE HOUSE

Divided into 4 pens; water drinkers; loft 2 over.

CATTLE SHUTE AND CRUSH GATE

Concrete holding pane to side.

UPPER YARD

LYIN SHED 24.38m (80'0) x 10.41m (34'2)

Vented roof; water drinker.

LYIN SHED 18.29m (60'0) x 7.98m (26'2)

Vented roof and sides; water trough; enclosed yard at front and rear.

DOWN TO:-

LOFT 1 10.67m (35'0) x 7.01m (23'0) approx

Slatted floor and sides; water trough; enclosed yard to front and rear.

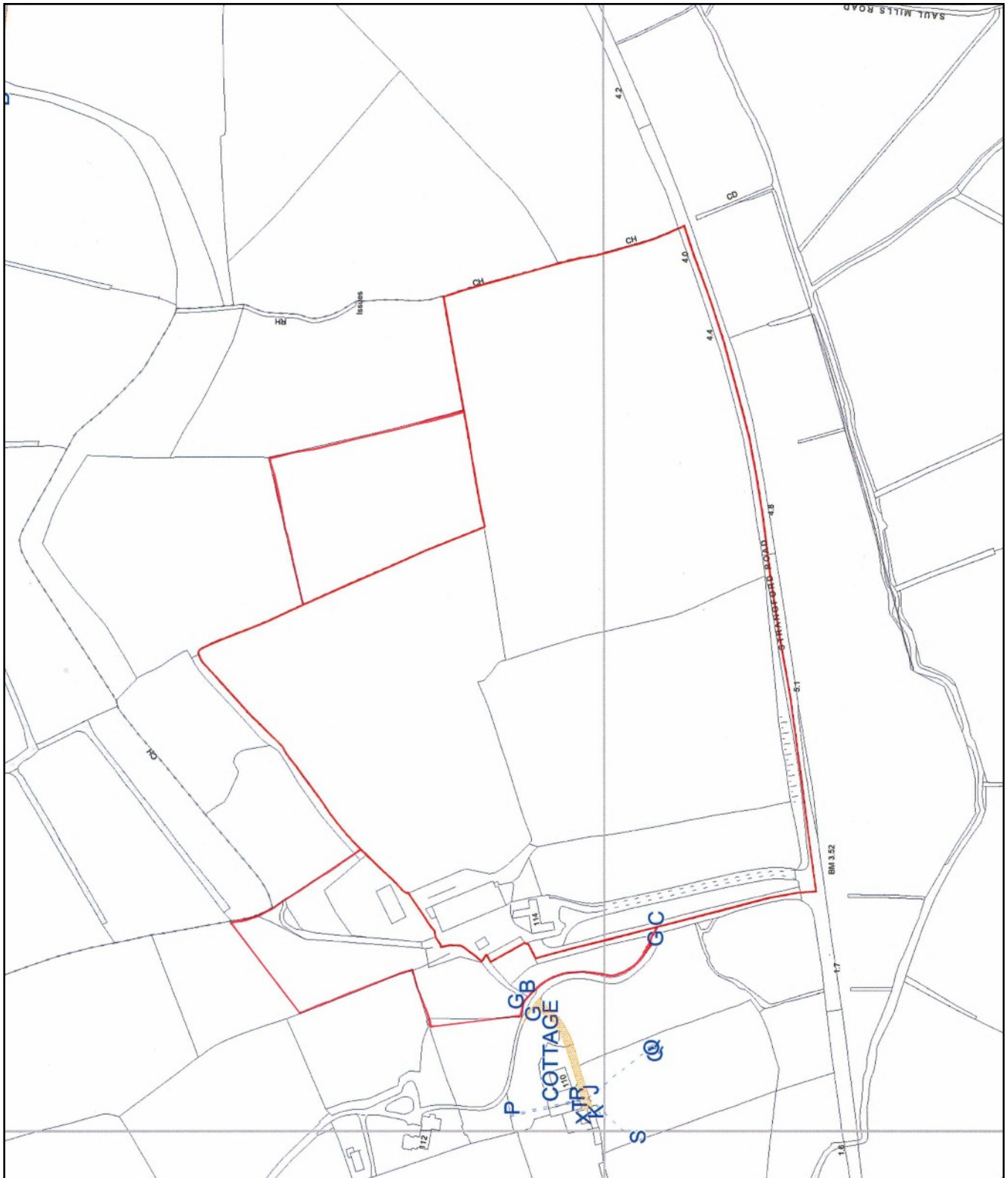


LOFT 2 Double doors from yard.

LANDS

Divided into convenient sized fields, the good quality lands are partially in grass and sown down in cereal crops. Mains water is laid on to troughs. The lands are thought suitable for cutting, grazing and / or cereal crops and enjoy good frontage to the county road.





VIEWING

By Appointment with Agent



HOW MUCH IS YOUR HOUSE WORTH?

Contact us now to arrange a free, no obligation valuation



MAILING LIST

Join Our Mailing List to receive free texts or emails on newly added properties



Tim Martin & Company for themselves and for the vendors of this property have endeavoured to prepare these sales details as accurate and reliable as possible for the guidance of intending purchasers or lessees. These particulars are given for general guidance only and do not constitute any part of an offer or contract. The seller and us as agents, do not make any representation or give any warranty in relation to the property. We would recommend that all information contained in this brochure about the property be verified by yourself or professional advisors. Services, fittings and equipment referred to in the sales details have not been tested (unless otherwise stated) and no warranty will be given as to their condition. Please contact us prior to viewing the property. If there is any point of particular importance to you we would be pleased to provide additional information or make further enquiries. We will also confirm that the property remains available. This is particularly important if you are contemplating travelling some distance to view the property.

