



Rushfield

TEMPLEPATRICK ROAD
BALLYCLARE

P H A S E 2 B



Contents

STREET VIEW	6-7
TOWN LIVING	8-9
AREA MAP & TRAVEL TIMES	10-11
ENERGY EFFICIENT HOMES	12-13
SPECIFICATION	14-15
UPGRADE YOUR HOME	16-17
HOUSE TYPES OVERVIEW	18-19
SITE MAP	20-21
HOUSE TYPE PLANS	22-41
GARAGE OPTIONS	42-43
GARDEN ROOM OPTIONS	44



A photograph of three children standing at the edge of a pond, looking at a large group of ducks swimming in the water. The children are seen from behind. The girl on the left has a ponytail and wears a white tank top and pink pants. The boy in the middle wears a light blue cap and a red and white striped shirt. The boy on the right wears a blue shirt with a rainbow-striped collar. The pond is filled with green lily pads and many ducks. The scene is brightly lit, suggesting a sunny day.

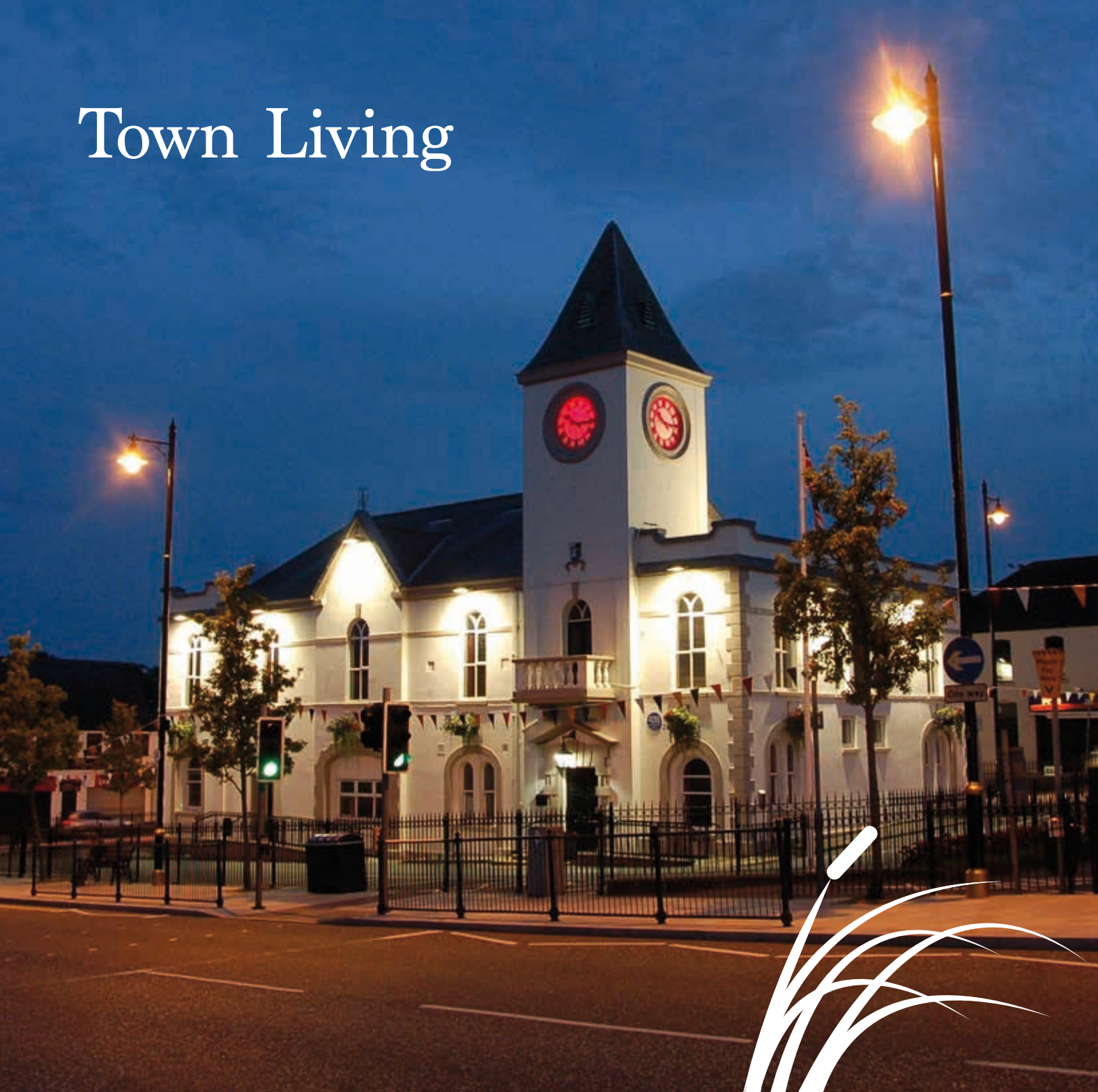
*Ballyclare...
a real sense of community*

A real sense of home.



Image for illustration purposes only

Town Living



Ballyclare is a busy market town in County Antrim with a great sense of community, making it ideal for commuters and perfectly suited for couples and families.

TRAVEL

The town is just minutes from the M2 motorway being adjacent to the A57 and is an ideal location for commuting to Belfast, Antrim and further afield.

LIVING

Ballyclare offers a vibrant mixture of specialist independent shops, popular coffee shops and a wide selection of cafes and restaurants. The day-to-day essentials are also within easy reach from butchers to greengrocers, hairdressers to beauticians and fashion to homeware shops.



LEISURE

The town centre has a leisure centre, with swimming pool, slides, lazy river and gym.

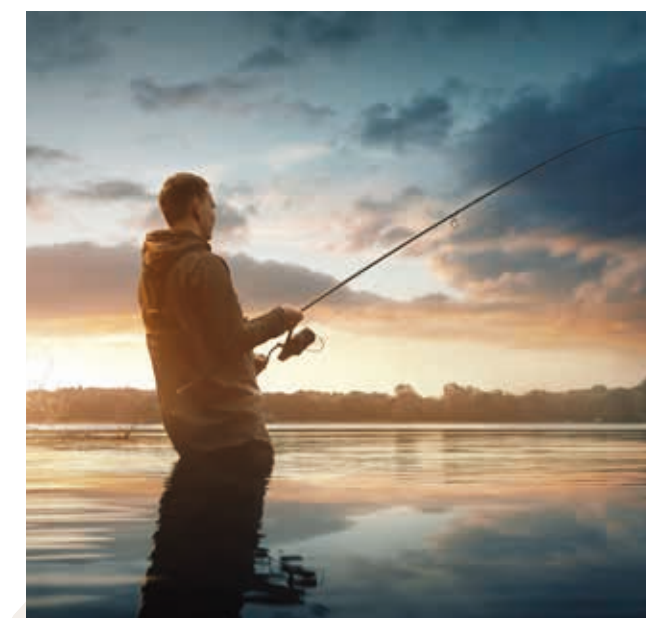
The attractive local park offers entertainment for all the family, with a play park, tennis courts and numerous walkways there's something for everyone. All this set in the backdrop of the Sixmile River which runs through the park.

For those seeking quality recreational activities there is an abundance of choice right on the town's doorstep. Golfers have a choice of two local courses and for anglers there are a number of well stocked fisheries in the area. Other activities available locally include horse riding, archery, walking and indoor football.

Organised sports also feature heavily in the local area with popular football, rugby, hockey, cricket, running, cycling and athletic clubs nearby. Ballyclare offers a welcoming rural location with easy access to the city making it a great location to set up home.

HISTORY

Ballyclare lies on the Six Mile Water Valley and owes its origins to being a crossing point on the river. The broad main street dates from the 17th century and in the towns picturesque centre is the market square and Town Hall. Developed from the old Market House it is now the focal point for both locals and visitors.



Ballyclare has been a settlement area for over six thousand years, with historic flint arrow heads dated to that era being discovered during a construction project North of the river in 1968.

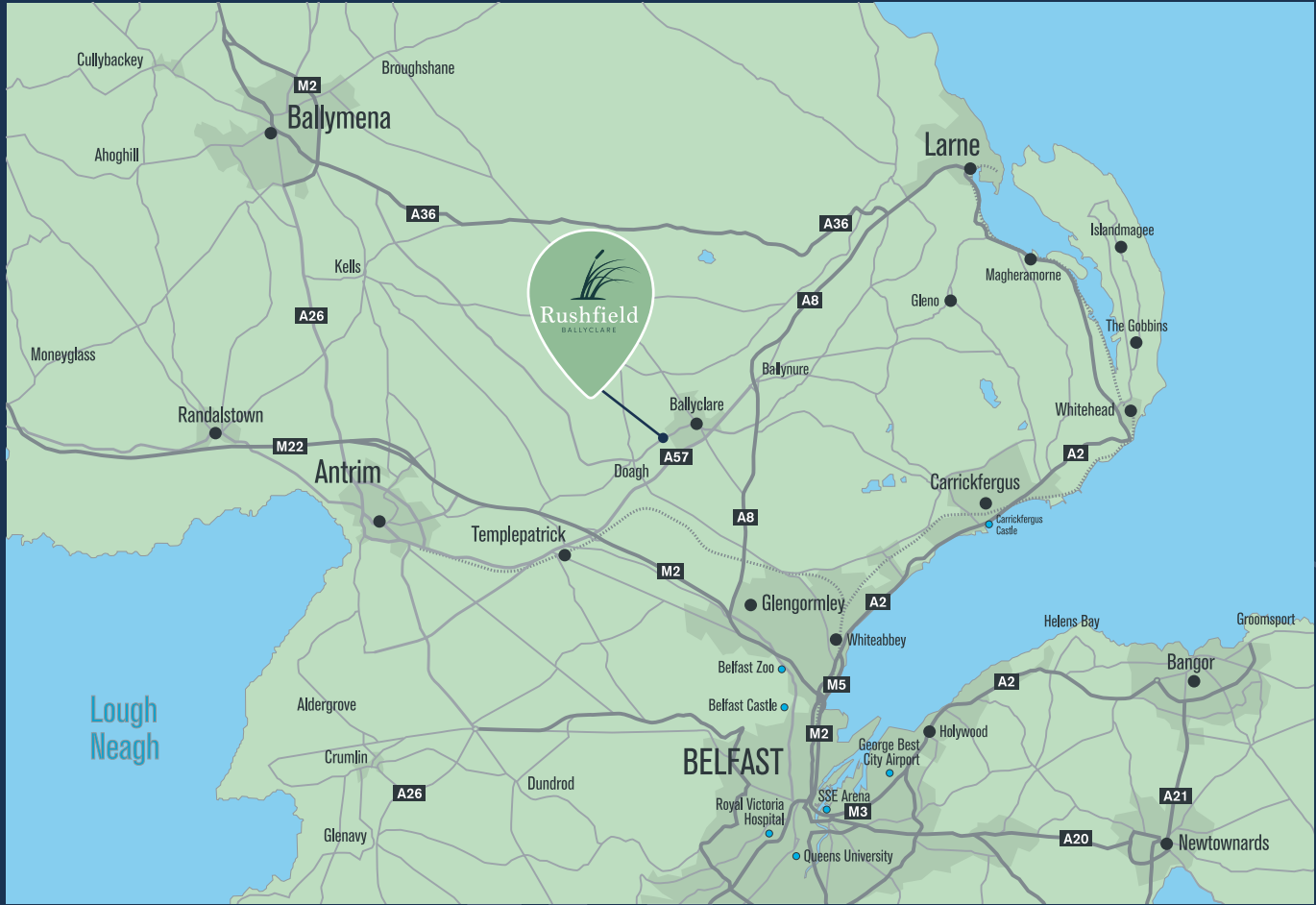
When the Normans built the castle at Carrickfergus they placed a line of outposts along the river which was then called the "Ollar" – River of the Rushes. In time the soldiers making the journey from Carrickfergus to Antrim reached the river at this spot when they had travelled six miles so began to call the Ollar the Six Mile Water.

Location Map



Travel Times

3 MIN	Ballyclare RFC & Templepatrick CC 0.5 miles / 3 mins	7 MIN	Templepatrick Town Centre 4.5 miles / 7 mins
3 MIN	Ballyclare Nursery School 0.8 miles / 3 mins	15 MIN	Antrim Town Centre 11 miles / 15 mins
4 MIN	Main Street (local shops & restaurants) 1 mile / 4 mins	16 MIN	Belfast International Airport 10 miles / 16 mins
4 MIN	Ballyclare Primary School 1 mile / 4 mins	17 MIN	Larne Ferry Port 13 miles / 17 mins
4 MIN	Ballyclare Comrades Football Club 1 mile / 4 mins	19 MIN	Belfast City Airport 14 miles / 19 mins
4 MIN	Ballyclare High School 1.2 miles / 4 mins	21 MIN	Belfast City Centre 13 miles / 21 mins
4 MIN	Greenacres Golf Centre 2 miles / 4 mins	23 MIN	Ballymena Town Centre 15 miles / 23 mins

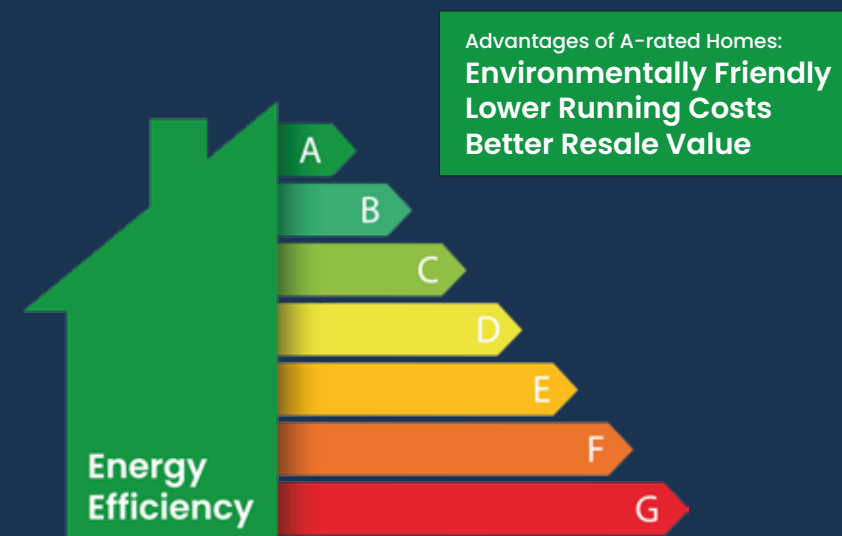


Discover A-rated energy efficient homes at Rushfield

Substantial savings through reduced maintenance and lower running costs!

At Rushfield (Phase 2B), we offer A-rated energy-efficient homes designed to significantly cut your utility bills. With state-of-the-art insulation, energy-efficient appliances, and sustainable features like solar panels, living here will lead to significant annual savings on your utility costs.

Our commitment to sustainability and environmental responsibility is evident in every home we build. From our energy-saving windows and doors, each detail is meticulously crafted to minimise energy waste and reduce expenses for our homeowners. At Rushfield (Phase 2B) we take pride in the quality of our turnkey homes ensuring each one meets the highest standards. For your peace of mind, all our homes come with a 10-year structural warranty.



Floor & Wall Insulation



Solar Panels



Car Charging Upgrade



Energy Efficient Appliances



SOLAR PV PANELS

Every home at Rushfield (Phase 2B) comes equipped with Solar PV panels as a standard feature. The placement and quantity of panels are tailored to each home's orientation, ensuring maximum energy output while also reducing your carbon footprint. (Savings will be dependent on energy provider, tariff, house type and orientation).



ENERGY EFFICIENCY

At Rushfield (Phase 2B) each property has been constructed to achieve a minimum A-rating on the BER scale, incorporating the highest standards of insulation. Our dedication to building sustainable homes extends beyond minimising environmental impact - Lotus Homes are designed with energy efficiency in mind offering substantial cost savings for you as the homeowner.

GREEN MORTGAGES

Equipped with features like standard solar panels - all our homes at Rushfield (Phase 2B) qualify for green mortgages making these properties even more appealing. On top of your monthly energy savings, green mortgages offer attractive benefits like cashback and better interest rates. Consult your financial advisor to check your eligibility and see how you can benefit.

* Solar panels positioned according to orientation of house. Number of panels on images are indicative only.

** Further details available upon request.



Specification

Each home in Rushfield comes with a premium turnkey package, allowing you to move into your dream home immediately after purchase. A dedicated New Homes Coordinator will also guide you through the homebuying journey and assist with personalising your home.



EXTERNAL FEATURES:

- > NHBC 10 Year structural warranty cover
- > Double glazed high performance lockable UPVC windows
- > GRP Composite front doors with a 5-point locking system.
- > Front and rear gardens top soiled and seeded
- > Tarmac driveway
- > Timber fencing to rear garden boundaries
- > Traditional masonry construction with render or brick to selected house types
- > Feature lighting to front and rear doors
- > Decorative garden paving
- > Outside tap

INTERNAL FEATURES:

- > High speed broadband available
- > Main's gas central heating system with a high energy efficiency boiler
- > High Thermal Insulation & Energy Efficiency Rating
- > Stove in 4 bed detached homes / Electric focal feature fire in semi-detached homes
- > Comprehensive range of electrical sockets throughout, including TV and telephone points
- > Wired for satellite point
- > Painted internal doors with chrome ironmongery
- > Painted moulded skirting, architraves, stair handrails & balustrades
- > All internal walls and ceilings painted throughout
- > Smoke, heat and CO2 detectors as standard



KITCHEN & UTILITY ROOMS

- > A choice of fully fitted kitchens and utility rooms (which includes door style and colour, handles, worktop and matching upstands)
- > Integrated appliances where applicable including built in electric oven and hob, extractor hood, dishwasher and fridge freezer
- > Washer dryer (washing machine in homes with a utility room)

BATHROOMS, ENSUITES & WC'S

- > Contemporary white sanitary ware and chrome fittings
- > Shower bath with full shower and shower screen (except where separate shower is provided in main bathroom)
- > Thermostatic showers in all en-suites
- > Feature vanity unit in main bathroom
- > Heated chrome towel rail in main bathroom
- > Thermostatic rain shower to main bathroom

FLOOR COVERINGS & TILES

- > Ceramic floor tiling to kitchen/dining, utility room, hall, bathroom, en-suite and W.C.
- > Ceramic wall tiling between units to kitchen and utility
- > Tiling around bath and to shower enclosures where applicable
- > Splash back tiling to all wash hand basins
- > Carpet and underlay to lounge, bedrooms, stairs and landings



Elevate your living Experience

Customise Your Home

At Lotus Homes we understand our customers and take pride in delivering a high-quality turnkey experience. However, for those desiring extra luxury we offer a selection of bespoke upgrades allowing you to tailor your home to your individual style and preferences. From elegant finishes to cutting-edge features, why not indulge in the opportunity to make your Lotus Home truly your own.

KITCHEN UPGRADES

Quartz Worktops: Available in various colour designs including quartz upstands, splashback surfaces and a bespoke sink selection.

High-Spec Appliances: Designed to blend functionality and style, our top-of-the-line appliances offer advanced features and a minimalistic aesthetic.

Door Selection: Explore our extensive range of solid and painted doors in various colours, with a variety of door handles available.

Optimise Your Space: Fully customise your kitchen layout and add extra units such as a larder or an elegant island. (where applicable)

FLOOR UPGRADES

Choose from a wide range of flooring options including ceramic tiles, carpets, laminate, and LVT flooring, offering durability and easy maintenance to personalise and upgrade your space.

CARPET UPGRADES

Elevate the quality and comfort of your home with our luxurious carpet range. Choose from a wide selection of colours and styles to suit your personal taste and ensure every room feels welcoming.

TILING UPGRADES

Choose from our superior floor and wall tiling options to add elegance to any room. Our collection features uniquely crafted designs and high-quality materials to enhance your kitchen, bathroom, or living areas.

ELECTRICAL UPGRADES*

Why not personalise your home with a range of customisable electrical features including additional sockets and TV / HDMI points, extra lights including spotlights to create the perfect ambiance, and external outlets for outdoor convenience.

ALARM SYSTEM

Build upon your pre-wired setup by installing an enhanced alarm system for added protection and greater peace of mind.

BATHROOM UPGRADES

Customise your bathroom with our high-spec sanitary ware, adding value, functionality, and sophistication to your home.

SUNROOM

Expand your living space with a beautiful garden room to create a more spacious open plan kitchen, living, or dining area (See Page 40).

GARAGE*

Our garages are designed to seamlessly integrate and blend into your home. Whether you're seeking extra storage space, safeguarding of vehicles, or simply expanding your home (See Page 38-39).

CAR CHARGING PORT

Start each day with a full charge using our EV charging port options providing cost-effective and convenient charging at home. Speak to your New Home Co-ordinator to discuss.

SOLAR PANEL BATTERY*

Unlock the potential of solar energy for extended use day and night. With a battery pack upgrade you can maximise your solar investment and provide uninterrupted power regardless of the weather.

GARDEN PAVING

Make the most of your outdoor space with extra garden paving - designed to bring beauty, functionality, and versatility to your surroundings.

* where applicable



Rushfield

BALLYCLARE

House Types



Optional Extras

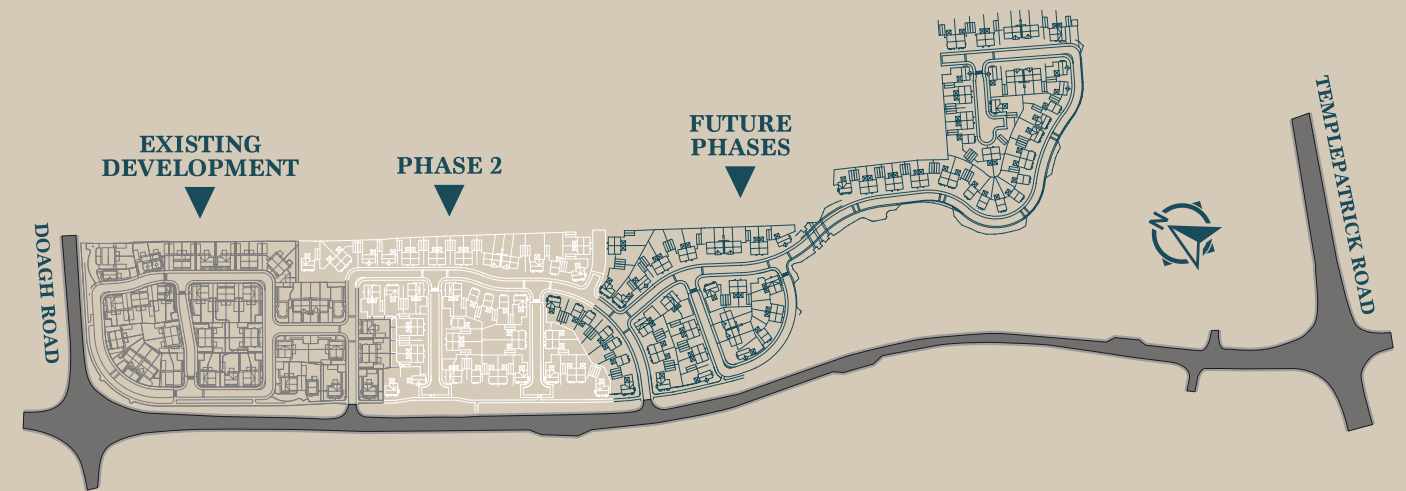
Garages - see pages 40 - 41

Garden Rooms - see page 42

Or please ask for more details

Site Map

PHASE 2B



Site Map Key

HOUSE TYPES:

Meadow

4 BED - DETACHED, 1395 sq.ft.

Heath

4 BED - DETACHED, 1375 sq.ft.

Calluna

4 BED - DETACHED, 1260 sq.ft.

Woodrush

3 BED - DETACHED, 1100 sq.ft.

Melic

4 BED - SEMI-DETACHED, 1260 sq.ft.

Marram

3 BED - SEMI-DETACHED, 1085 sq.ft.

Brome

3 BED - SEMI-DETACHED, 1050 sq.ft.

Cotton

3 BED - SEMI-DETACHED, 1020 sq.ft.

Dollaghan

3 BED - SEMI-DETACHED, 1015 sq.ft.

Ollar

3 BED - SEMI-DETACHED, 940 sq.ft.



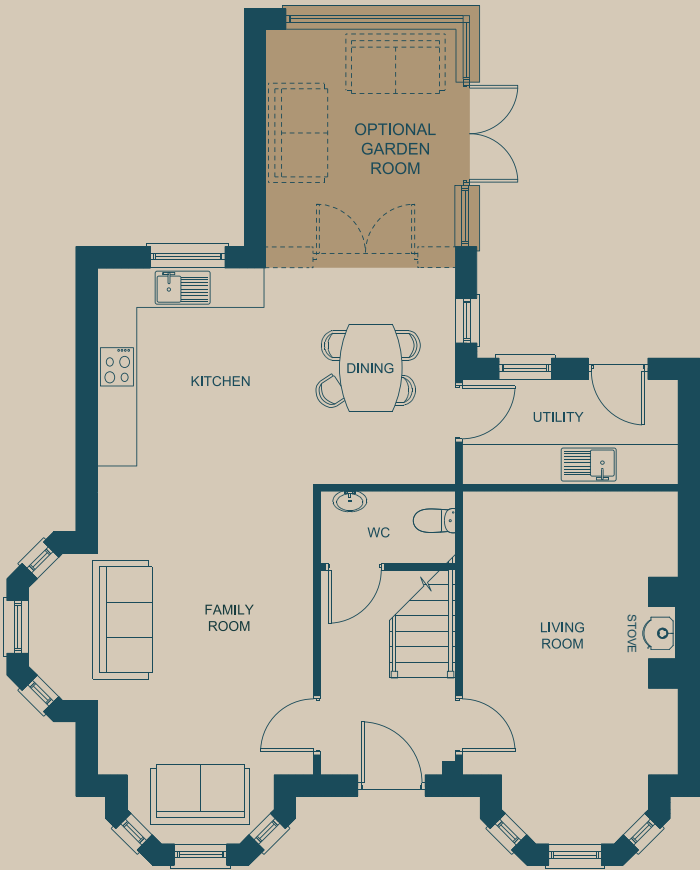
Meadow

4 BED
DETACHED
1395 SQ.FT

GARDEN ROOM
ADDITIONAL
110 SQ.FT



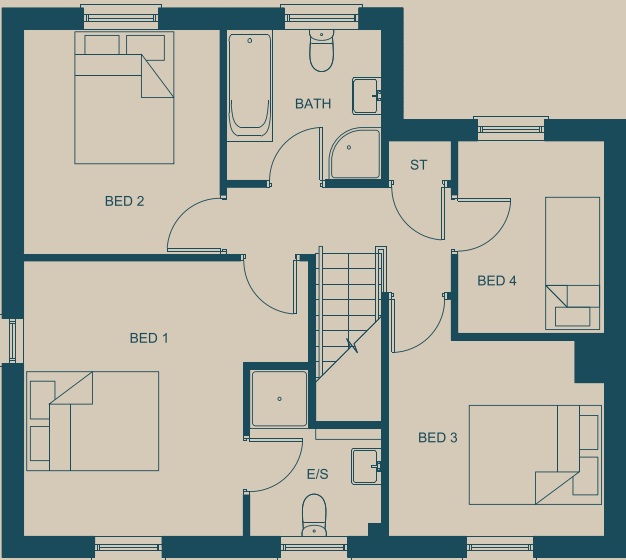
Ground Floor



GROUND FLOOR DIMENSIONS

KITCHEN / DINING / FAMILY	8.7m x 5.4m	28" 7 x 17" 9
UTILITY	3.2m x 1.5m	10" 6 x 4" 11
LIVING ROOM	5.3m x 3.2m	17" 5 x 10" 6
WC	2.0m x 1.1m	6" 7 x 3" 7
OPTIONAL EXTRA GARDEN ROOM	3.3m x 2.8m	10"10 x 9" 2
GARAGE	Available on selected plots.	

First Floor



FIRST FLOOR DIMENSIONS

BED 1	4.3m x 4.1m	14" 1 x 13" 5
ENSUITE	2.0m x 1.6m	6" 7 x 5" 3
BED 2	3.4m x 2.9m	11" 2 x 9" 6
BED 3	3.5m x 3.2m	11" 6 x 10" 6
BED 4	2.9m x 2.2m	9" 6 x 7" 3
BATH	2.3m x 2.2m	7" 7 x 7" 3

EXTERNAL FINISH



44, 124, 143,
146 & 154



157



Image for illustration purposes only

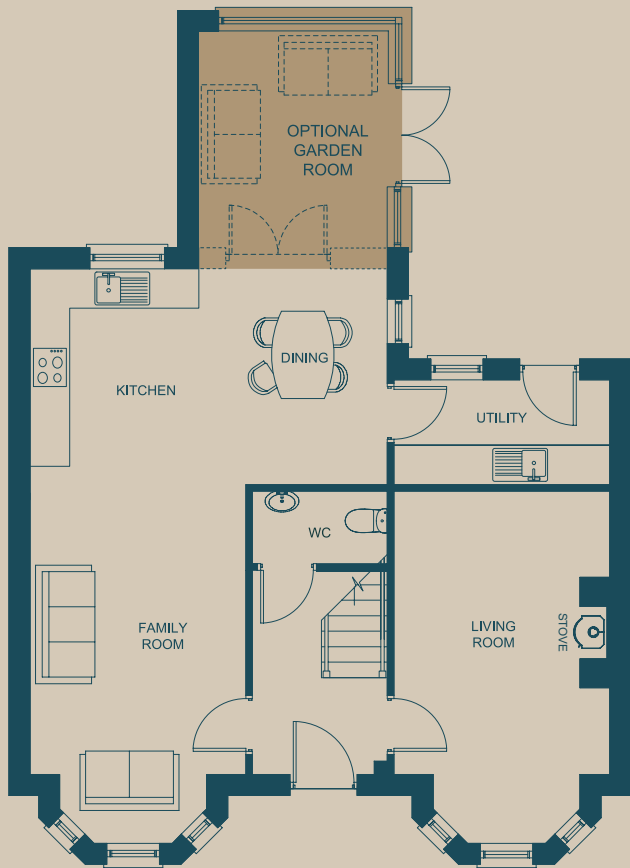
Plans are not to scale, dimensions are approximate.
Imagery in this brochure is for illustrative purposes only.
All measurements are maximum measurements.

Meadow

4 BED DETACHED
1395 SQ.FT



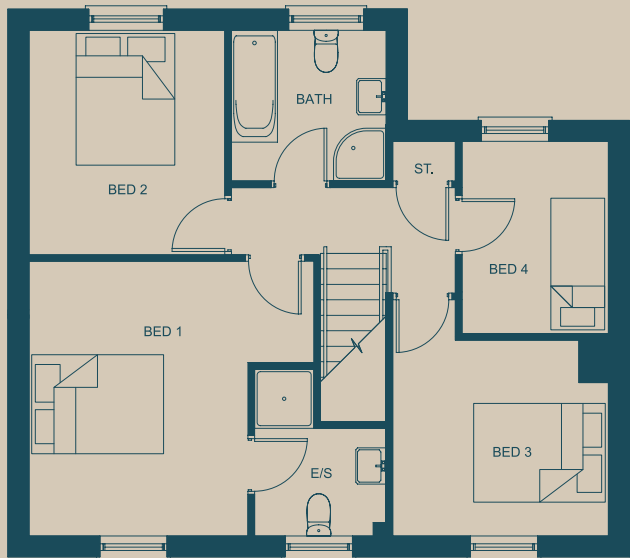
Ground Floor



GROUND FLOOR DIMENSIONS

KITCHEN / DINING / FAMILY	8.7m x 5.4m	28" 7 x 17" 9
UTILITY	3.2m x 1.5m	10" 6 x 4" 11
LIVING ROOM	5.3m x 3.2m	17" 5 x 10" 6
WC	2.0m x 1.1m	6" 7 x 3" 7
OPTIONAL EXTRA GARDEN ROOM	3.3m x 2.8m	10"10 x 9" 2
GARAGE	Available on selected plots.	

First Floor



FIRST FLOOR DIMENSIONS

BED 1	4.3m x 4.1m	14" 1 x 13" 5
ENSUITE	2.0m x 1.6m	6" 7 x 5" 3
BED 2	3.4m x 2.9m	11" 2 x 9" 6
BED 3	3.5m x 3.2m	11" 6 x 10" 6
BED 4	2.9m x 2.2m	9" 6 x 7" 3
BATH	2.3m x 2.2m	7" 7 x 7" 3

EXTERNAL FINISH



46, 61 & 132



Image for illustration purposes only

Plans are not to scale, dimensions are approximate.
Imagery in this brochure is for illustrative purposes only.
All measurements are maximum measurements.

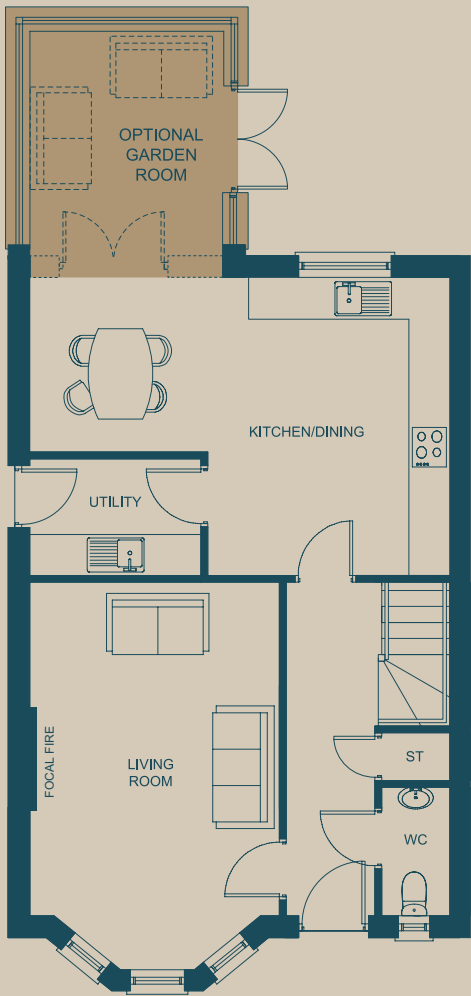
Calluna

4 BED
DETACHED
1260 SQ.FT

GARDEN ROOM
ADDITIONAL
110 SQ.FT



Ground Floor



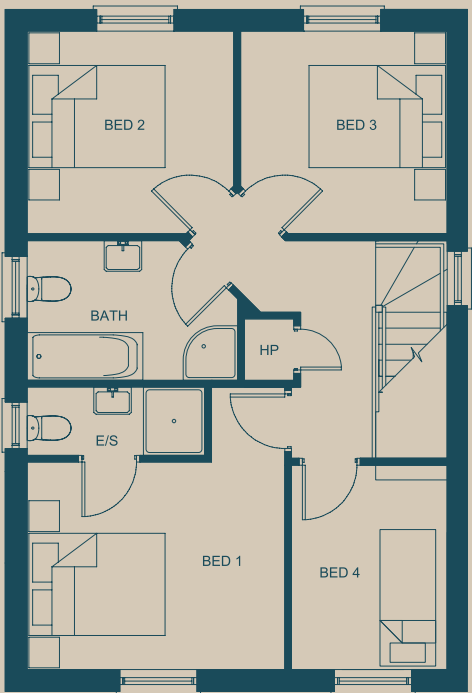
GROUND FLOOR DIMENSIONS

KITCHEN / DINING	6.1m x 4.3m	20' 0 x 14' 1
UTILITY	2.5m x 1.7m	8' 2 x 5' 7
LIVING ROOM	5.6m x 3.6m	18' 4 x 11' 10
WC	1.8m x 1.0m	5' 11 x 3' 3

OPTIONAL EXTRA GARDEN ROOM
3.3m x 2.8m 10'10 x 9' 2

GARAGE
Available on selected plots.

First Floor



FIRST FLOOR DIMENSIONS

BED 1	4.1m x 3.7m	13' 5 x 12' 2
ENSUITE	2.6m x 1.0m	8' 6 x 3' 3
BED 2	3.0m x 2.9m	9' 10 x 9' 6
BED 3	3.0m x 2.9m	9' 10 x 9' 6
BED 4	2.9m x 2.2m	9' 6 x 7' 3
BATH	3.0m x 2.0m	9' 10 x 6' 7

EXTERNAL FINISH

RENDER

45

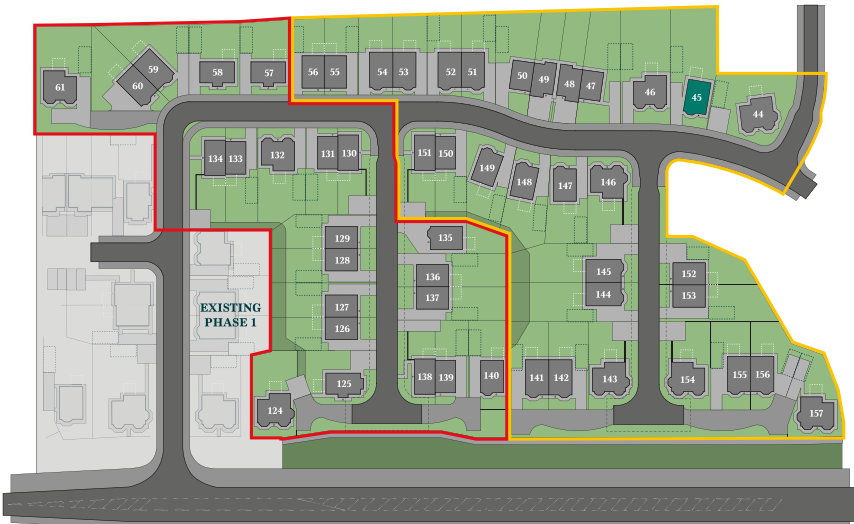


Image for illustration purposes only

Plans are not to scale, dimensions are approximate.
Imagery in this brochure is for illustrative purposes only.
All measurements are maximum measurements.

Calluna

4 BED DETACHED
1260 SQ.FT

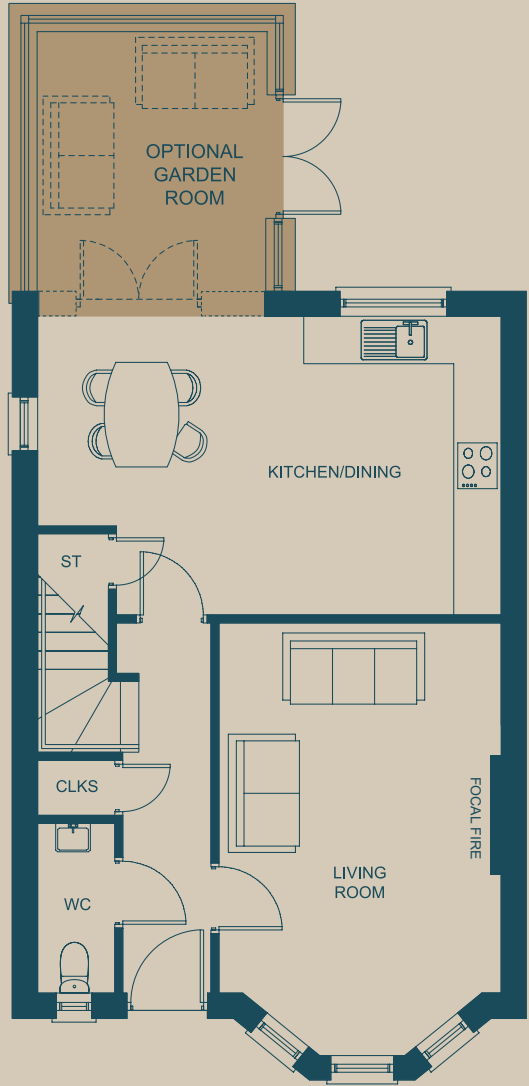
Woodrush

3 BED
DETACHED
1100 SQ.FT

GARDEN ROOM
ADDITIONAL
110 SQ.FT



Ground Floor



GROUND FLOOR
DIMENSIONS

KITCHEN / DINING
5.8m x 3.7m 19' 0" x 12' 2"

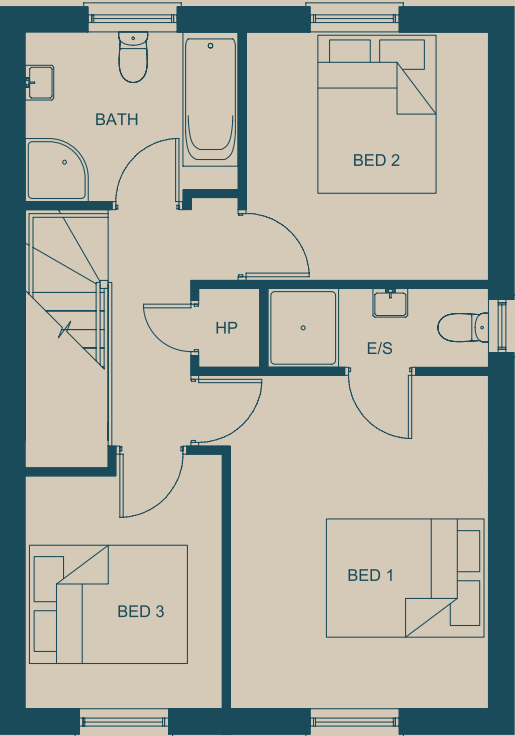
LIVING ROOM
5.4m x 3.5m 17' 9" x 11' 6"

WC
2.1m x 0.9m 6' 11" x 2' 11"

OPTIONAL EXTRA
GARDEN ROOM
3.3m x 2.8m 10' 10" x 9' 2"

GARAGE
Available on selected plots.

First Floor



FIRST FLOOR
DIMENSIONS

BED 1
4.2m x 3.2m 13' 9" x 10' 6"

ENSUITE
2.8m x 1.0m 9' 2" x 3' 3"

BED 2
3.1m x 3.0m 10' 2" x 9' 10"

BED 3
3.2m x 2.5m 10' 6" x 8' 2"

BATH
2.7m x 1.9m 8' 10" x 6' 3"

EXTERNAL
FINISH

RENDER

135, 140, 147,
148 & 149



Image for illustration purposes only

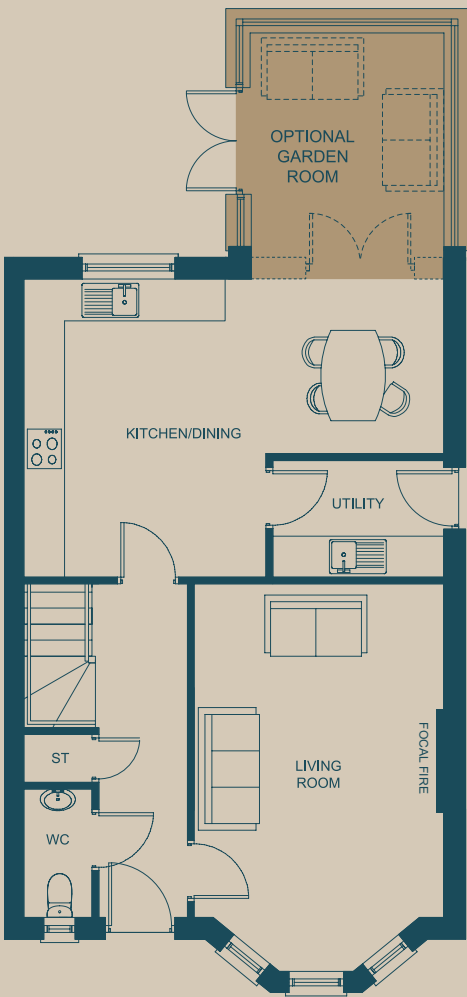
Plans are not to scale, dimensions are approximate.
Imagery in this brochure is for illustrative purposes only.
All measurements are maximum measurements.

Woodrush

3 BED DETACHED
1100 SQ.FT



Ground Floor



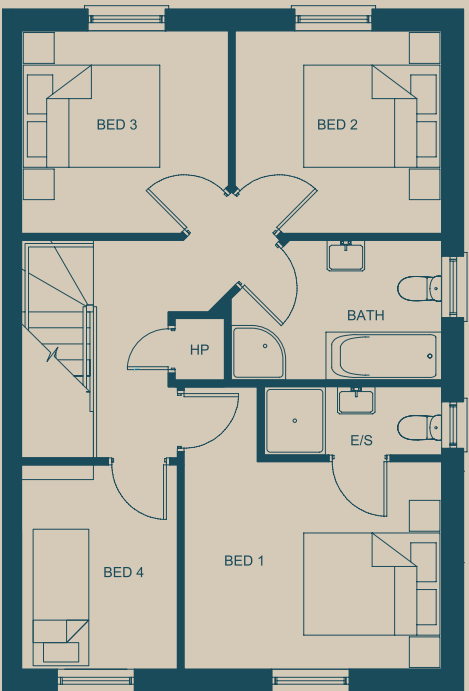
GROUND FLOOR
DIMENSIONS

KITCHEN / DINING	
6.1m x 4.3m	20' 0 x 14' 1
UTILITY	
2.5m x 1.7m	8' 2 x 5' 7
LIVING ROOM	
5.6m x 3.6m	18' 4 x 11' 10
WC	
1.8m x 1.0m	5' 11 x 3' 3

OPTIONAL EXTRA
GARDEN ROOM
3.3m x 2.8m 10'10 x 9' 2

GARAGE
Available on selected plots.

First Floor



FIRST FLOOR
DIMENSIONS

BED 1	
4.1m x 3.7m	13' 5 x 12' 2
ENSUITE	
2.6m x 1.0m	8' 6 x 3' 3
BED 2	
3.0m x 2.9m	9' 10 x 9' 6
BED 3	
3.0m x 2.9m	9' 10 x 9' 6
BED 4	
2.9m x 2.2m	9' 6 x 7' 3
BATH	
3.0m x 2.0m	9' 10 x 6' 7

EXTERNAL
FINISH

RENDER

51, 52, 53, 54, 59,
60, 141, 142, 144,
145, 155 & 156



Image for illustration purposes only

Plans are not to scale, dimensions are approximate.
Imagery in this brochure is for illustrative purposes only.
All measurements are maximum measurements.

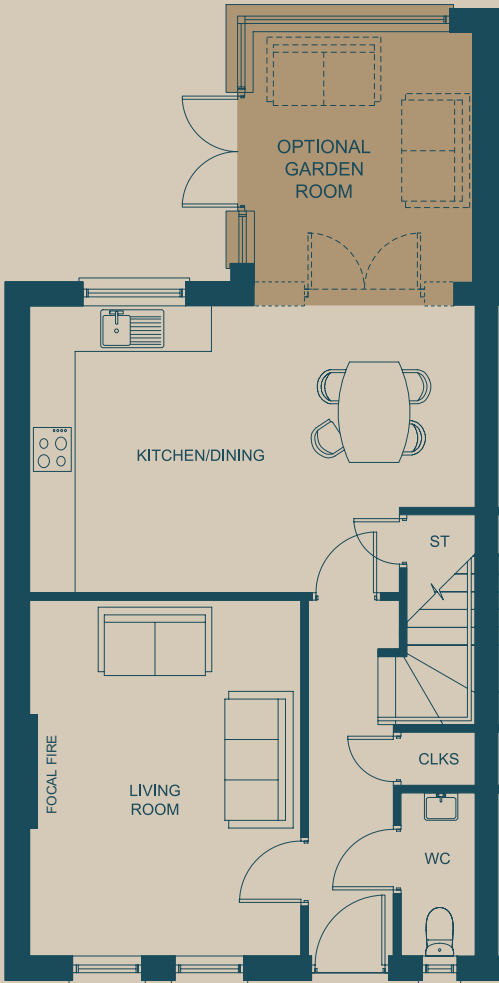
Marram

3 BED
SEMI-DETACHED
1085 SQ.FT

GARDEN ROOM
ADDITIONAL
110 SQ.FT



Ground Floor



GROUND FLOOR
DIMENSIONS

KITCHEN / DINING
5.8m x 3.7m 19' 0" x 12' 2"

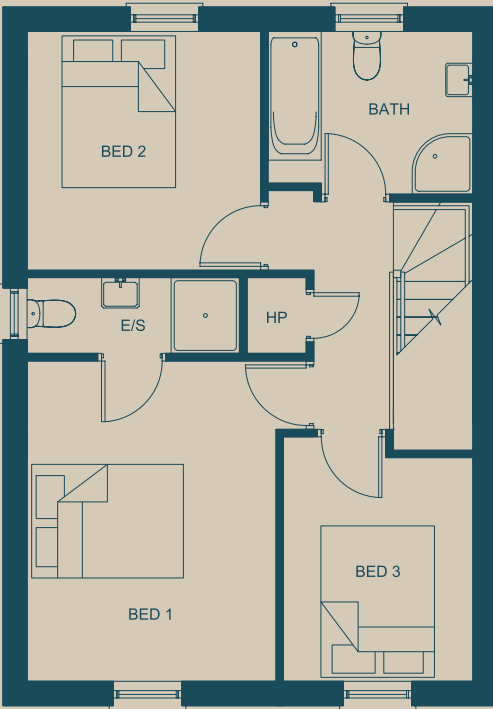
LIVING ROOM
4.6m x 3.5m 15' 1" x 11' 6"

WC
2.1m x 0.9m 6' 11" x 2' 11"

OPTIONAL EXTRA
GARDEN ROOM
3.3m x 2.8m 10'10" x 9' 2"

GARAGE
Available on selected plots.

First Floor



FIRST FLOOR
DIMENSIONS

BED 1
4.2m x 3.2m 13' 9" x 10' 6"

ENSUITE
2.8m x 1.0m 9' 2" x 3' 3"

BED 2
3.1m x 3.0m 10' 2" x 9' 10"

BED 3
3.2m x 2.5m 10' 6" x 8' 2"

BATH
2.7m x 2.0m 8' 10" x 6' 7"

EXTERNAL
FINISH



55, 56, 126, 127,
128, 129, 136, 137,
152 & 153



Image for illustration purposes only

Plans are not to scale, dimensions are approximate.
Imagery in this brochure is for illustrative purposes only.
All measurements are maximum measurements.

Marram

3 BED SEMI-DETACHED
1085 SQ.FT

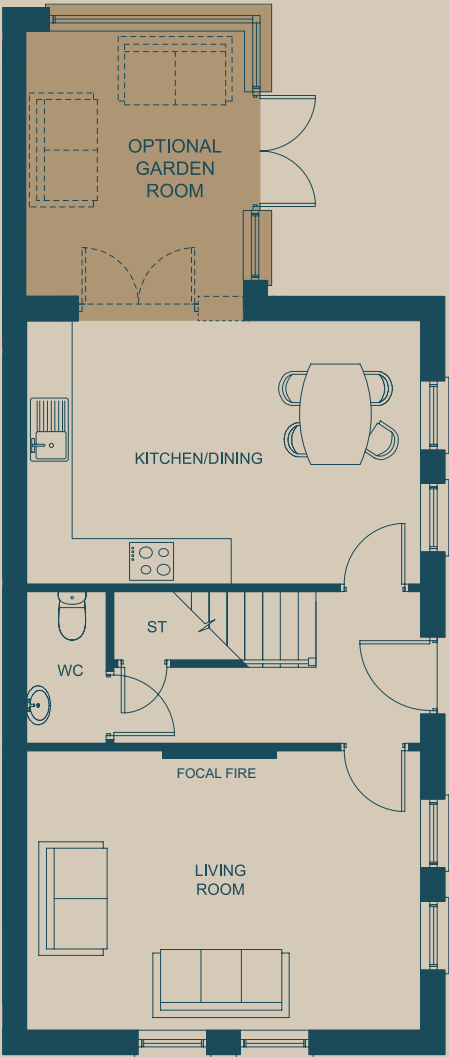
Brome

3 BED
SEMI-DETACHED
1050 SQ.FT

GARDEN ROOM
ADDITIONAL
110 SQ.FT



Ground Floor



GROUND FLOOR
DIMENSIONS

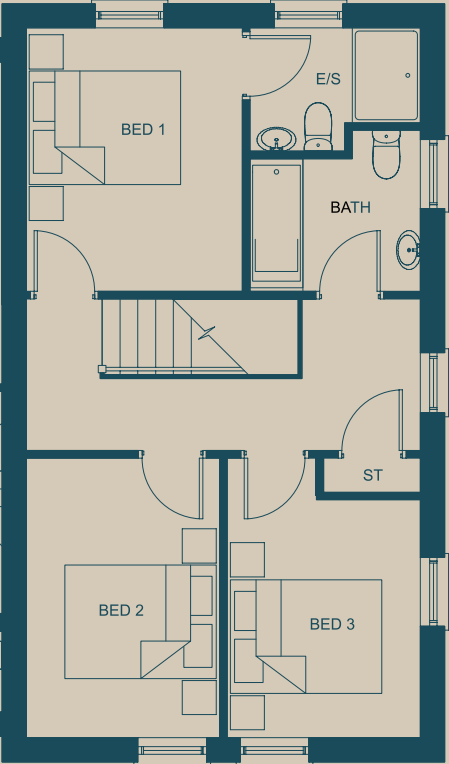
KITCHEN / DINING
5.2m x 3.4m 17' 1 x 11' 2

LIVING ROOM
5.2m x 3.6m 17' 1 x 11' 10

WC
2.0m x 1.0m 6' 7 x 3' 3

OPTIONAL EXTRA
GARDEN ROOM
3.3m x 2.8m 10' 10 x 9' 2

First Floor



FIRST FLOOR
DIMENSIONS

BED 1
3.4m x 2.8m 11' 2 x 9' 2

ENSUITE
2.2m x 1.6m 7' 3 x 5' 3

BED 2
3.6m x 2.5m 11' 10 x 8' 2

BED 3
3.6m x 2.5m 11' 10 x 8' 2

BATH
2.2m x 2.1m 7' 3 x 6' 11

EXTERNAL
FINISH



138 & 151



130 & 134



Image for illustration purposes only

Plans are not to scale, dimensions are approximate.
Imagery in this brochure is for illustrative purposes only.
All measurements are maximum measurements.

Brome

3 BED SEMI-DETACHED
1050 SQ.FT

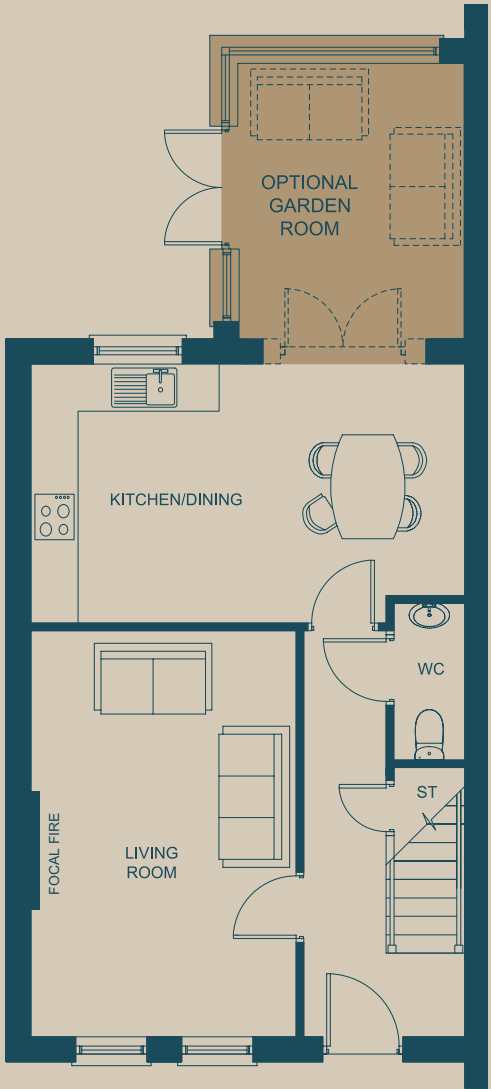
Cotton

3 BED
SEMI-DETACHED
1020 SQ.FT

GARDEN ROOM
ADDITIONAL
110 SQ.FT



Ground Floor



GROUND FLOOR
DIMENSIONS

KITCHEN / DINING
5.5m x 3.3m 18" 1 x 10" 10

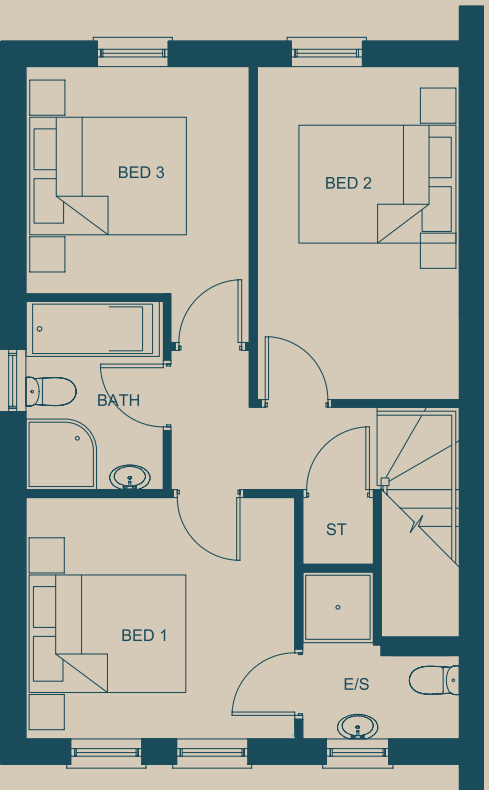
LIVING ROOM
5.1m x 3.3m 16" 9 x 10" 10

WC
2.0m x 0.9m 6" 7 x 2" 11

OPTIONAL EXTRA
GARDEN ROOM
3.3m x 2.8m 10"10 x 9" 2

GARAGE
Available on selected plots.

First Floor



FIRST FLOOR
DIMENSIONS

BED 1
3.4m x 3.0m 11" 2 x 9" 10

ENSUITE
2.0m x 1.2m 6" 7 x 3" 11

BED 2
4.2m x 2.5m 13" 9 x 8" 2

BED 3
2.8m x 2.8m 9" 2 x 9" 2

BATH
2.4m x 1.7m 7" 10 x 5" 7

EXTERNAL
FINISH



139 & 150



131 & 133



Image for illustration purposes only

Plans are not to scale, dimensions are approximate.
Imagery in this brochure is for illustrative purposes only.
All measurements are maximum measurements.

Cotton

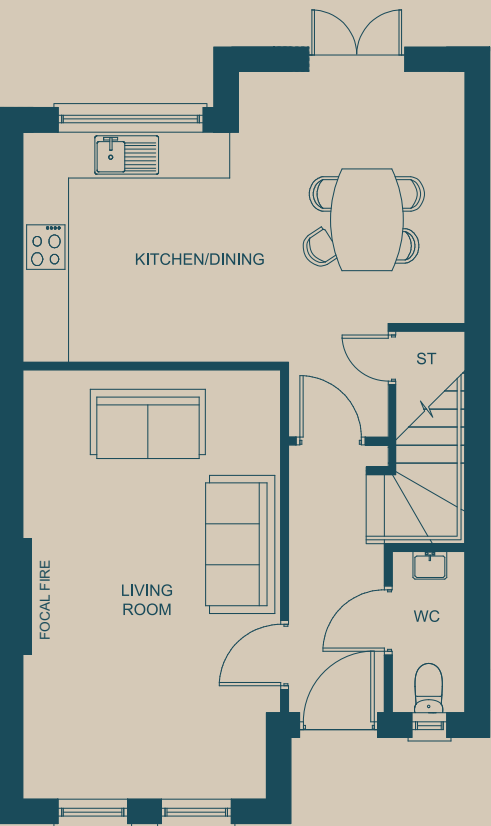
3 BED SEMI-DETACHED
1020 SQ.FT

Dollaghan

3 BED
SEMI-DETACHED
1015 SQ.FT



Ground Floor



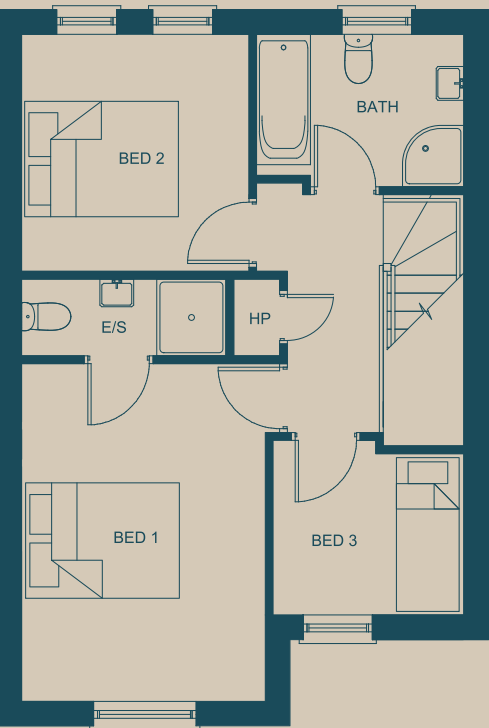
GROUND FLOOR
DIMENSIONS

KITCHEN / DINING
5.7m x 3.2m 18" 8 x 10" 6

LIVING ROOM
5.5m x 3.3m 18" 1 x 10" 10

WC
2.1m x 0.9m 6" 11 x 2" 11

First Floor



FIRST FLOOR
DIMENSIONS

BED 1
4.4m x 3.1m 14" 5 x 10" 2

ENSUITE
2.6m x 1.0m 8" 6 x 3" 3

BED 2
3.0m x 2.9m 9" 10 x 9" 6

BED 3
2.4m x 2.1m 7" 10 x 6" 11

BATH
2.7m x 1.8m 8" 10 x 5" 11

EXTERNAL
FINISH



48 & 49

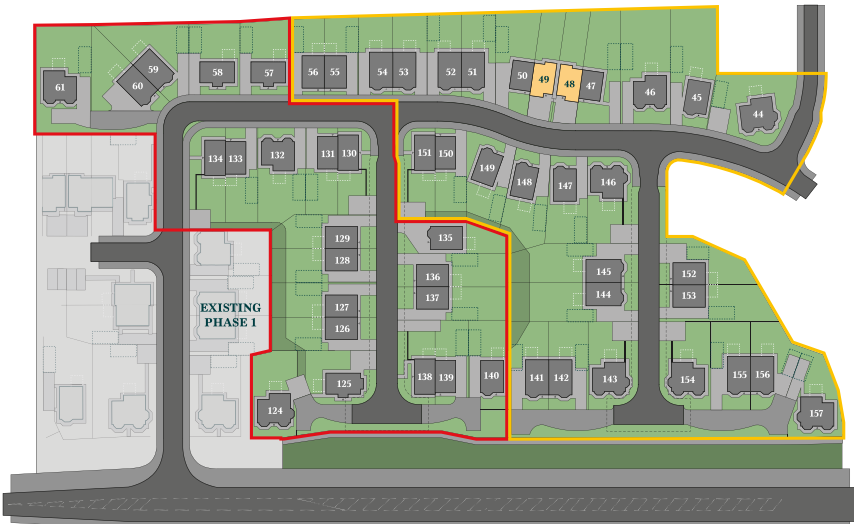


Image for illustration purposes only

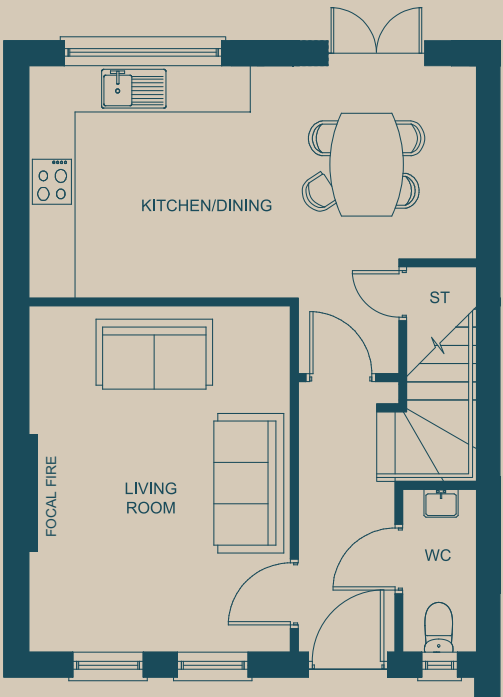
Plans are not to scale, dimensions are approximate.
Imagery in this brochure is for illustrative purposes only.
All measurements are maximum measurements.

Dollaghan

3 BED SEMI-DETACHED
1015 SQ.FT



Ground Floor

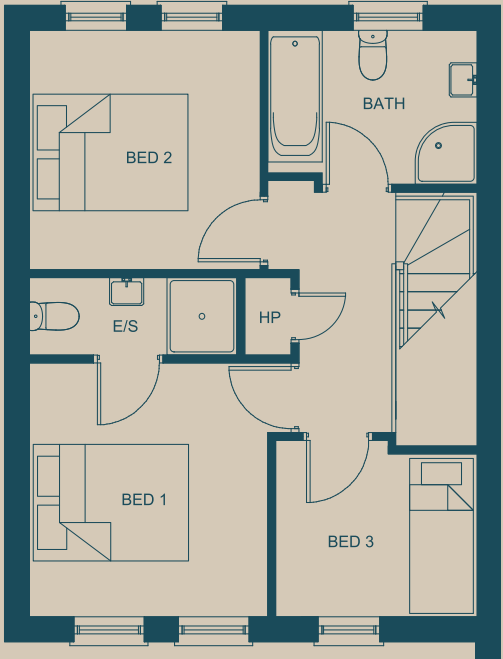


GROUND FLOOR
DIMENSIONS

KITCHEN / DINING	5.7m x 2.9m	18" 8 x 9" 6
LIVING ROOM	4.4m x 3.3m	14" 5 x 10" 10
WC	2.1m x 0.9m	6" 11 x 2" 11

OPTIONAL EXTRA
GARAGE
Available on selected plots.

1st Floor



FIRST FLOOR
DIMENSIONS

BED 1	3.2m x 3.0m	10" 6 x 9" 10
ENSUITE	2.6m x 1.0m	8" 6 x 3" 3
BED 2	3.0m x 2.9m	9" 10 x 9" 6
BED 3	2.6m x 2.1m	8" 6 x 6" 11
BATH	2.7m x 1.8m	8" 10 x 5" 11

EXTERNAL
FINISH



47 & 50



Image for illustration purposes only

Plans are not to scale, dimensions are approximate.
Imagery in this brochure is for illustrative purposes only.
All measurements are maximum measurements.

Single Garages

SINGLE GARAGE

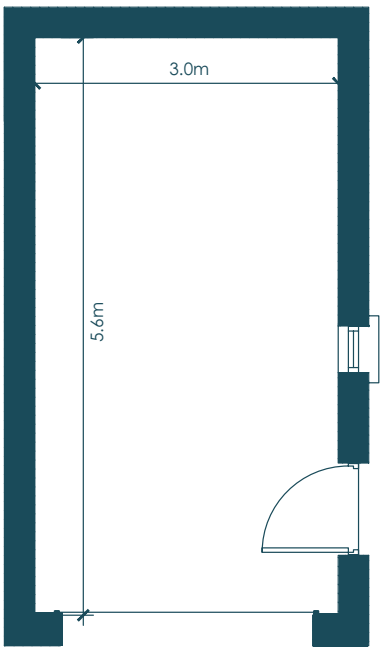


Image for illustration purposes only

SINGLE GARAGE WITH STORE

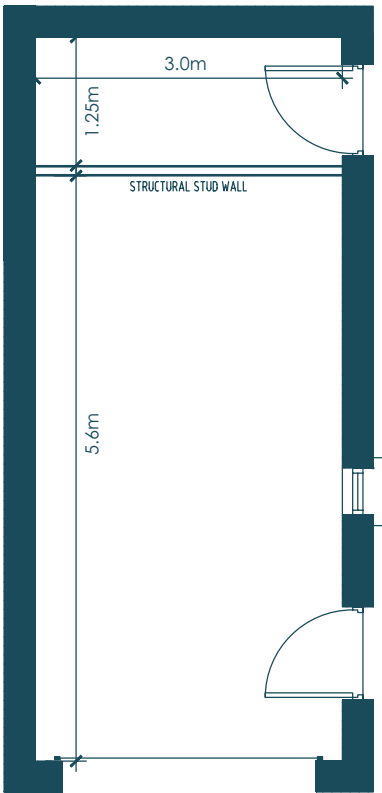
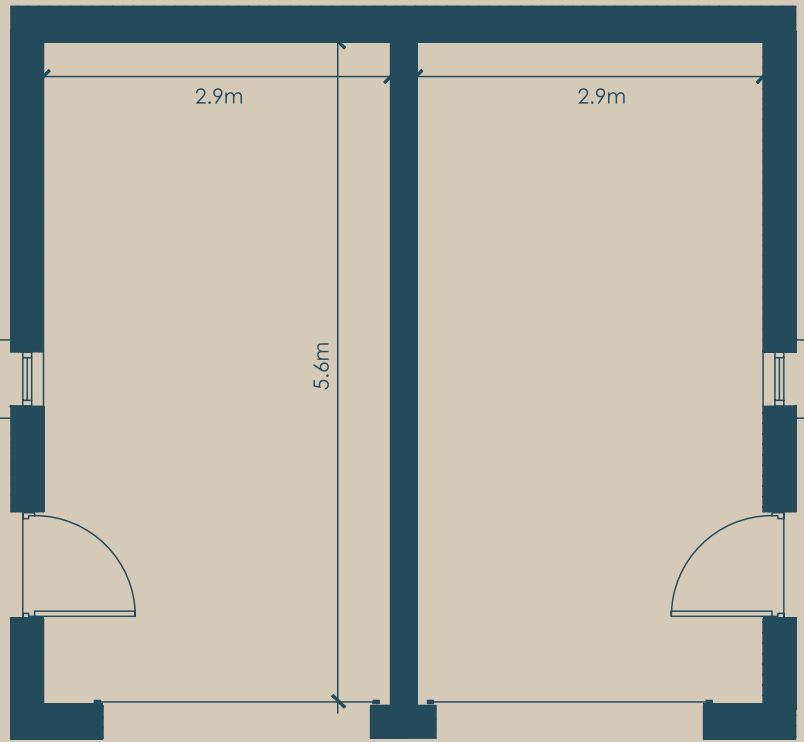


Image for illustration purposes only

Double Party Garage



Image for illustration purposes only



Garages and Garden Rooms will be built in the same finish as the house.

Garden Rooms

2 SIDED GLASS

Available with
Heath, Meadow, Marram,
Brome & Cotton

Garden Room 110 sq.ft

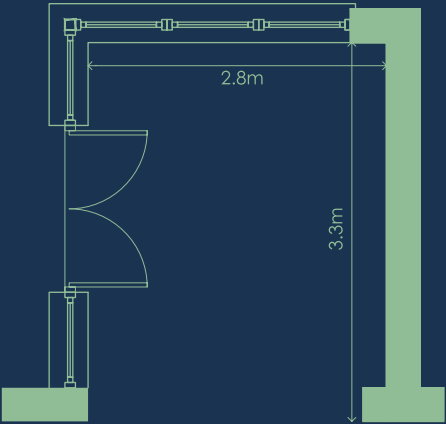


Image for illustration purposes only

3 SIDED GLASS

Available with
Melic & Woodrush

Garden Room 110 sq.ft

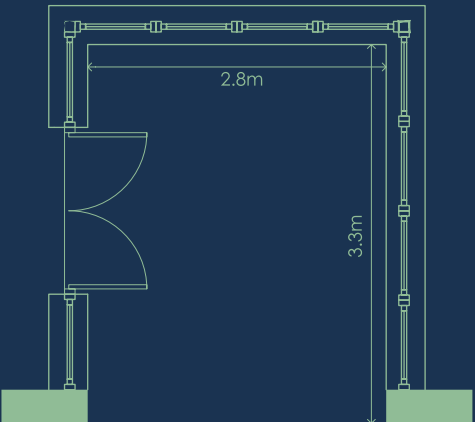



Image for illustration purposes only

Garages and Garden Rooms will be built in the same finish as the house.



Another quality development
by award winning developer
lotushomes.com

Follow us on:

-  LotusHomesUK
-  LotusHomesUK
-  Lotus Homes

Selling Agent



525 LISBURN RD,
BELFAST
BT9 7GQ

028 9066 8888
SIMONBRIEN.COM

This Brochure is provided by the Developer by way of information and for illustrative purposes only. The contents of this Brochure do not form part of any contract for the sale of a dwelling house at Killinchy Park Hall. House type and site layout plans (including roads and open spaces) are not drawn to scale and are for information purposes only. Computer generated images, photographs or other illustrations are for illustrative purposes only. The Developer reserves the right to make alterations to the design and specification of house types, roads, open spaces and the layout of individual sites within the Development in accordance with obligations to the local planning and building control authority or otherwise in the general interests of the Development. Details of the appropriate specifications or choices of finishes for individual dwellings can be obtained from the Selling Agent and intending purchasers should satisfy themselves as regards the options in respect of those items at the time of booking a site.

The Development sale contracts to be released by the Developer's solicitor shall constitute the only contract between the Developer and purchaser. No employee of the Selling Agent or the Developer or contractor of the Developer has any authority to give any representation or warranty whatsoever concerning the design, dimensions or specification of any dwelling within the Development.



www.lotushomes.com