

ONE BEDROOM LUXURY RESIDENCES
MONTGOMERY STREET BELFAST BT1



ACT 1

FX DESIGN DIFFERENCE
London-style living. In Belfast.

RESIDENCES
Intelligent. Timeless Design.

LOCATION
Centre Stage in Belfast.

THIS IS SPECIAL. FX

At the turn of the 19th Century, Belfast's theatres were booming. One of the most popular spots was the old Empire Theatre, situated then at Victoria Square. Crowds would enjoy the show, then spill out onto Montgomery Street. This was where people revelled in what they'd seen, what they'd heard. This was where the stories of the evening were replayed by the audience in their own words.

Named in honour of Belfast's dramatic past and its burgeoning industry in film and TV, FX is a new kind of residence with performance at its core. Everywhere you look, touch, walk, whatever angle you take, it all adds up to something new, exciting and different. This is a sophisticated production that makes every audience sit up and take notice.
This is special. FX

ACT 1

ACT 1

LEADING

01
DESIGN DIFFERENCE
Made in Chelsea.
Living in Belfast.
pg06

02
RESIDENCES
Step inside Belfast's newest
London style luxury single
bed residences.
pg14

*The interior styling
sidesteps the traps of
fashion in favour of
intelligent, layered,
timeless design.*

Interior finishes



*Luxury living in the
heart of Belfast.*

03
LOCATION
Be centre stage in the heart
of Belfast.
pg38

04
SPECIFICATION
pg54

05
FLOOR PLANS
Three apartment
types.
pg58



FX luxury residences



MADE IN CHELSEA LIVING IN BELFAST

The FX Design Difference

The interior spaces have been directed, created and refined by London based designers Day True. Every element has been carefully orchestrated to place the pleasure of living firmly centre stage.



During the industrial revolution, Belfast grew. It became a place of work, of refuge - a home of fashion and wealth. Three hundred years later, and this little city isn't just the place to be, it's the place to be seen. Just ask the hundreds of movie stars who can be seen wandering around in between takes, or the thousands of tourists desperate to see the landscape that inspired so many stories and is the setting for so much on screen. Just look at the shops, the restaurants, the bars. Look at the art, fashion and the cars. Look at the places to live - like FX, the latest luxury residential development from Alan Fraser.

FX is a new suite of residences for those who appreciate the finest things in life. Complete with residents' lounge with an in-house coffee bar, rooftop garden, private gym, concierge, this isn't so much a place to rest your head as a place to head your own empire. Every residence, has been space planned and designed by the award-winning team of Day True interior architects who ordinarily can be seen working with well-heeled clients in and around Chelsea and

Maida Vale. So, what are they doing in Belfast? Day True owners Tony Robson and Hayley Tarrington explained, "It all started with a mutual connection through Marks Design and a chance meeting at our showroom in London. At Day True, we spend most of our time trying to give people a sense of space in a city where real estate is reaching ever more astronomical fees. Alan Fraser, the man behind FX saw our work and thought we would be able to use our expertise to add something very unique and different to this project."

**BELFAST HAS BEEN RATED
AS THE BEST REGION IN THE
WORLD TO VISIT IN 2018 BY
LONELY PLANET.**



Tony Robson
Hayley Tarrington-
Robson
Founders of Day True



Hayley continues, “There is a natural link between interior styling and the long term profitability of a project. We have spent a few years honing an approach we call, ‘progressive design’, which is driven by behaviour but layered with contemporary detailing. We use these two elements to give our work a timeless quality. We are essentially using our design ability to protect the investment made by home owners; if we design it properly, owning or renting a property in FX will always be an attractive proposition, so the value is maintained.”

DayTrue have designed some incredible interiors for period and contemporary properties in London. Drawing influence from their eclectic surroundings, like the brutalist

Trellick Towers in Notting Hill and the art deco tube station in Maida Vale, they combine the best of what has gone before, and bring it up to date with detailing from some of the UK and Europe’s most exciting designers and manufacturers. Like the kitchen handles from Buster + Punch – each is delicately detailed but unbelievably sturdy. Everything is made to last.

The interpretation of how someone will use a space is a key skill of the Day True team. The target purchaser of the FX residences is broad, but it could be narrowed down to someone who travels to Belfast regularly and more than likely works long hours.



DETAILING FROM SOME OF THE UK AND EUROPE’S MOST EXCITING DESIGNERS AND MANUFACTURERS HELPS TO MAKE FX SPECIAL.

“We use design to protect the investment made by home owners - owning a well designed property will always be an attractive proposition, so the value is maintained.”

The convenience of the residences in terms of location (they are a stone’s throw from the City Hall and Courts) and facilities (rooftop garden, a lounge you can hire for meetings) makes them the ideal bolt hole for a busy person. The interior styling of the FX building makes it look like a high end hotel. A grand entrance way with oversized mirrors, doors and lights sets the scene perfectly for the opulence within.

The lounge is equipped with stylish armchairs, a fire, a coffee machine and an overhead projector. It can be hired out by residents for business meetings or for pleasure, so you can easily invite round a number of people without having to worry about tidying up before or after.

Open the door to one of the residences and you can sense the difference. Every detail has been considered, your eye is drawn to the light and airiness of the living spaces, perfectly framed with a matt grey Rotpunkt kitchen, and a herringbone engineered floor. The bedroom is simple, but luxurious, with a rich velvet rug set into the herringbone floor and framed with a brass trim.

The bathrooms have an understated cool with a five star hotel inspired ensuite featuring high end materials like Corian and exclusive brands like Hansgrohe’s Axor range and Rexa, an Italian range that is designed and manufactured from sustainable materials deep in the Italian mountains.

*“Something exciting
and different is
happening in Belfast.”*

Every last detail from the taps to the light switches has been carefully considered by the Day True team. It's a difficult but important task. Tony Robson added, "We want people to feel good when they enter an FX residence. We want their home to work for their lifestyle. We want everything they touch to remind them they are living somewhere special."

It's clear that something exciting and different is happening in the property market in central Belfast. There's no doubt that clever design is desirable, but often neglected in city centre living. With this project, Alan Fraser is leading the charge by placing good design at the heart of the value proposition. This is why it's special. FX.

DAY TRUE



A modern, multi-story apartment building with a light-colored facade and large windows. The building is illuminated from within, showing warm interior lights. The windows are arranged in a grid-like pattern, with some units featuring balconies. The building is set against a clear blue sky. A rooftop garden with greenery is visible on top of the building. The text "LUXURY LIVING IN THE HEART OF BELFAST" is overlaid in white, sans-serif capital letters across the middle of the image.

LUXURY LIVING IN THE HEART OF BELFAST

FLEXIBLE

FX is a building with many faces. It is situated right in the heart and bustle of the city. It is exclusive, but also inclusive. Like the Resident's Lounge. Used casually, or booked out for your own private cinema screening, or business meeting, with an inbuilt coffee machine, wine fridge, open gas fire and wifi enabled projector connected to Netflix and Amazon Prime Video, it brings extra comfort, extra opportunity and extra flexibility for every resident.



The Residents' Lounge is equipped with a coffee machine, wine fridge, fire and multi-media facilities, which can be booked for private cinema screenings, or business meetings.



RESIDENTS' LOUNGE



TIMELESS LUXURY

FX may be built for today, but it's much more than simply modern. The interior styling sidesteps the traps of fashion in favour of intelligent, layered, timeless design. Day True's signature 'Progressive Design' styling promotes the layout and materials to a leading role. An oversized herringbone floor unites the entire floor space, spreading character from wall to wall. An inlaid area of luxurious carpet sits under the bed and is framed by a brass trim. Colour and contrast filter throughout, making the space warm and cool at the same time.

EXCITING IDEAS

Every residence is flooded with natural light. We've achieved this by keeping the kitchen, living and dining spaces open. Pocket doors open into wall cavities rather than into living spaces. The living area is planned around the practical and everyday, because what you look at when you're cooking really matters. An inbuilt hot water tap keeps the kitchen appliance free. A top-of-the-range Siemens oven that also steam cooks and microwaves, maximises cupboard space. An induction hob boils water in half the time of a normal hob. This is not technology for the sake of it, it's modern appliances that will make a real difference to how you live.





FEELING RELAXED

Clever design and modern technology make these one bed residences work in every sense. The bedroom comes with a bespoke, fully fitted Jesse walnut bedroom wardrobe.

Handles, doors, light switches, there's a touch of luxury in every detail. Made by Buster + Punch, the smoked bronze ironmongery throughout looks industrial, but with its diamond cut knurled finish, it feels luxurious.



BATHROOM

RAISED EXPECTATIONS

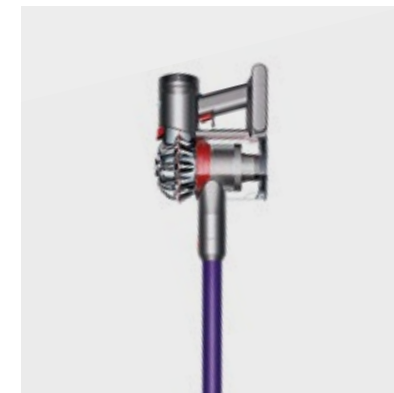
Each bedroom is purposefully united with a high end bathroom, a double act that steals the show. A bespoke Corian sink is underpinned by a floating shelf that runs the whole length of the bathroom. This connects with a shower that stretches right across the adjoining wall, creating a united, luxurious space. In Series 1 and 2, the opulence of the bedroom and ensuite bathroom is made more practical with a separate guest cloakroom accessed off the hall. It's relaxation made real.

FURNISHED WITH

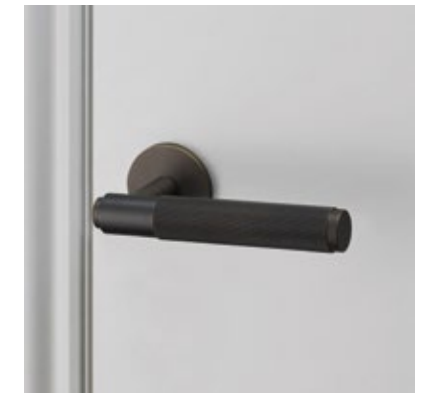
*Character comes from a careful layering of detail.
For us, only the finest brands make it into the finest
residences. These are our top performers.*



SIEMENS



dyson



BUSTER + PUNCH



REXA



AXOR



JESSE



CATALANO



**ROT
PUNKT
KÜCHEN**



hansgrohe

EXTRAS



CONCIERGE

The double height, grand entrance way to FX features custom made art, bespoke lighting and a concierge, a reassuring presence who's here to help and welcome.



RESIDENTS' ROOF-TOP GARDEN

The rooftop garden is landscaped with herbs, flowers and seating areas, it is a place to enjoy all year round.



GYM AND FITNESS

Fitted with the latest fitness equipment, this carefully designed, onsite gym is a practical addition to a busy lifestyle.



LOBBY





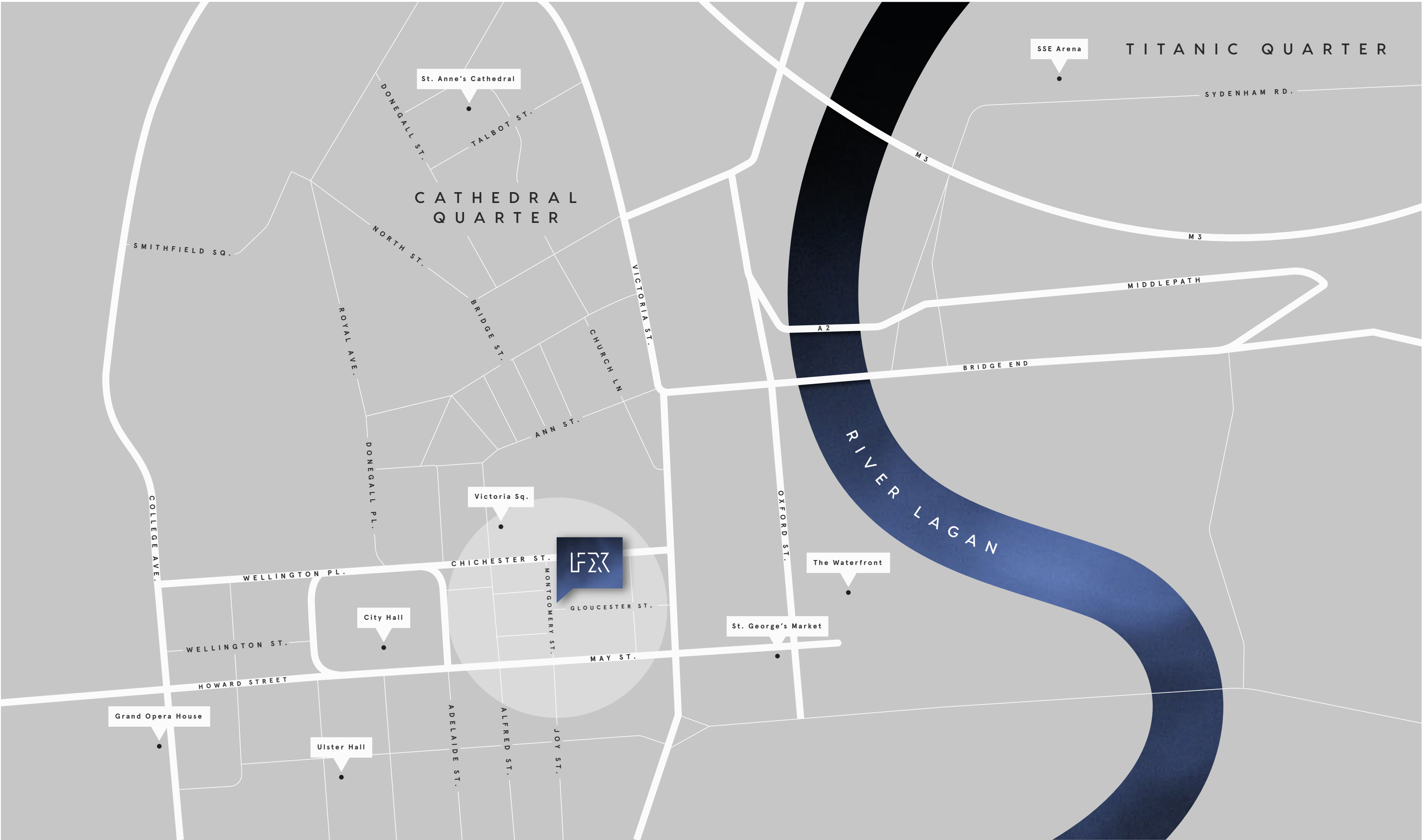
FIT EXTRAS

Busy lives need extra convenience. The FX residents' gym is equipped with everything you need to stay healthy. It's the perfect space to clear your mind and exercise your body.

CENTRE
STAGE



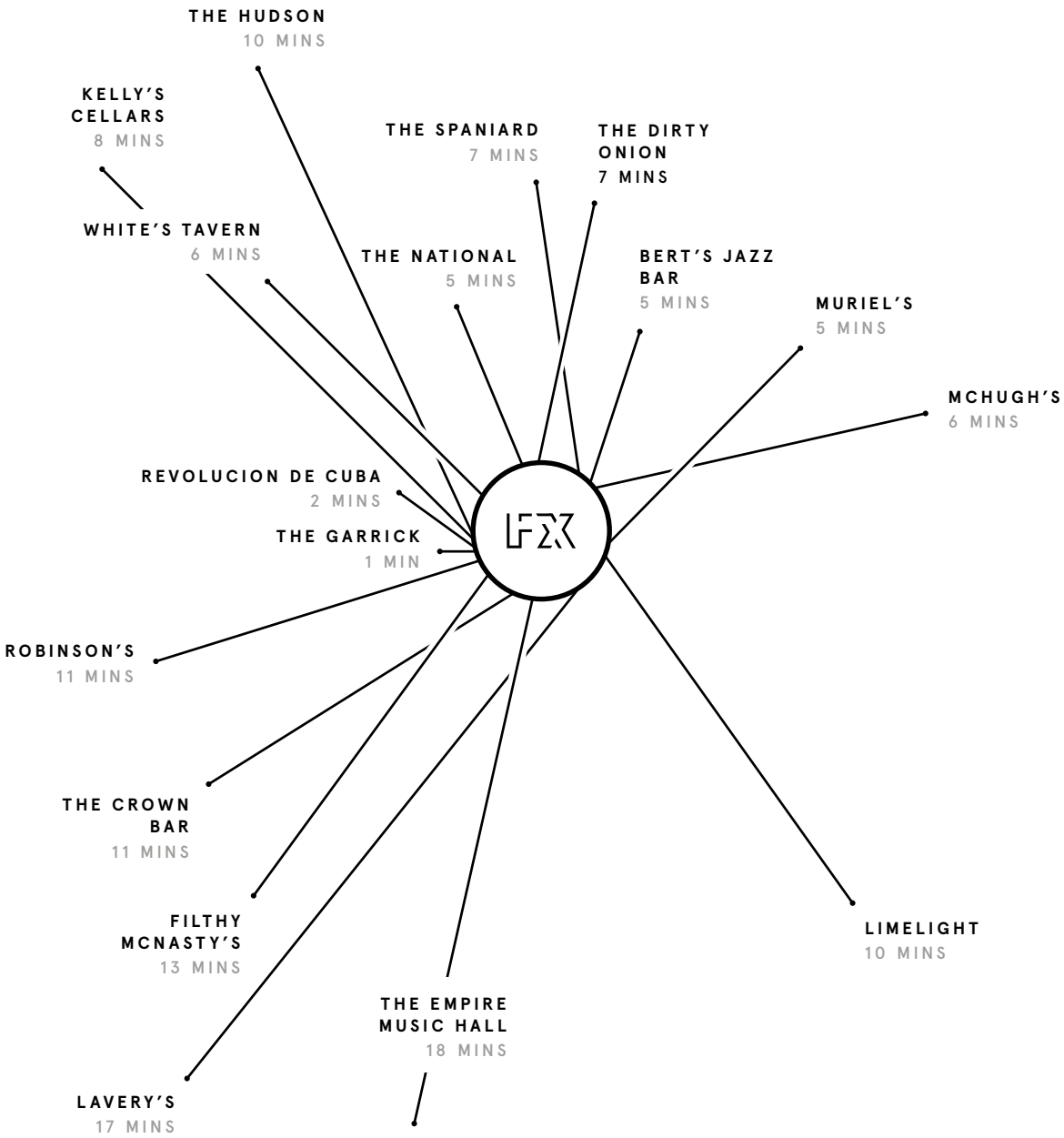






BARS & CLUBS

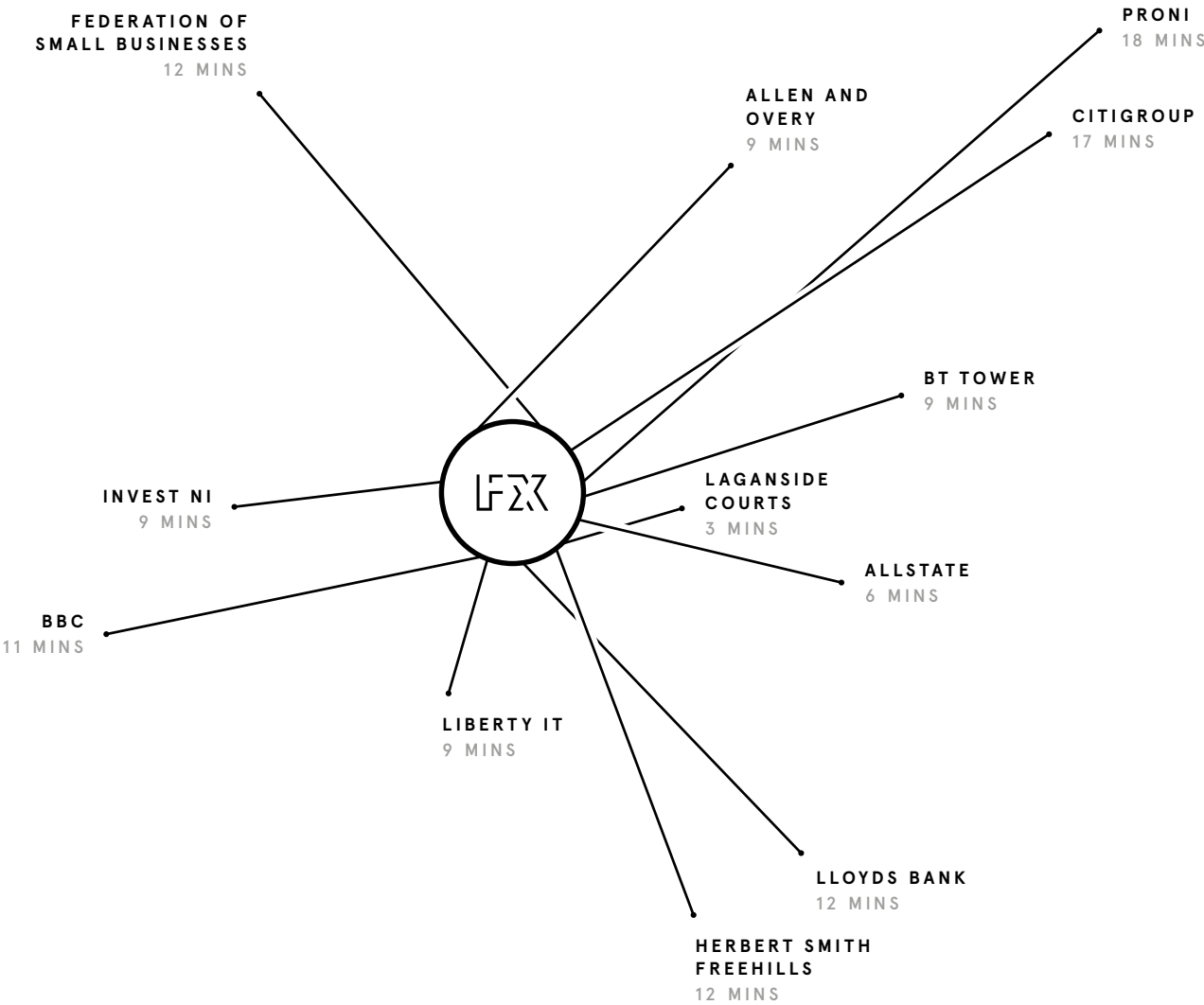
From roaring fires and pints of the black stuff, to chic cocktails on a contemporary rooftop, it's easy to match an atmosphere with your mood in this historic and modern city.





BUSINESS

Every year more international businesses hear the word about Belfast's perfect combination of people, location and experience.

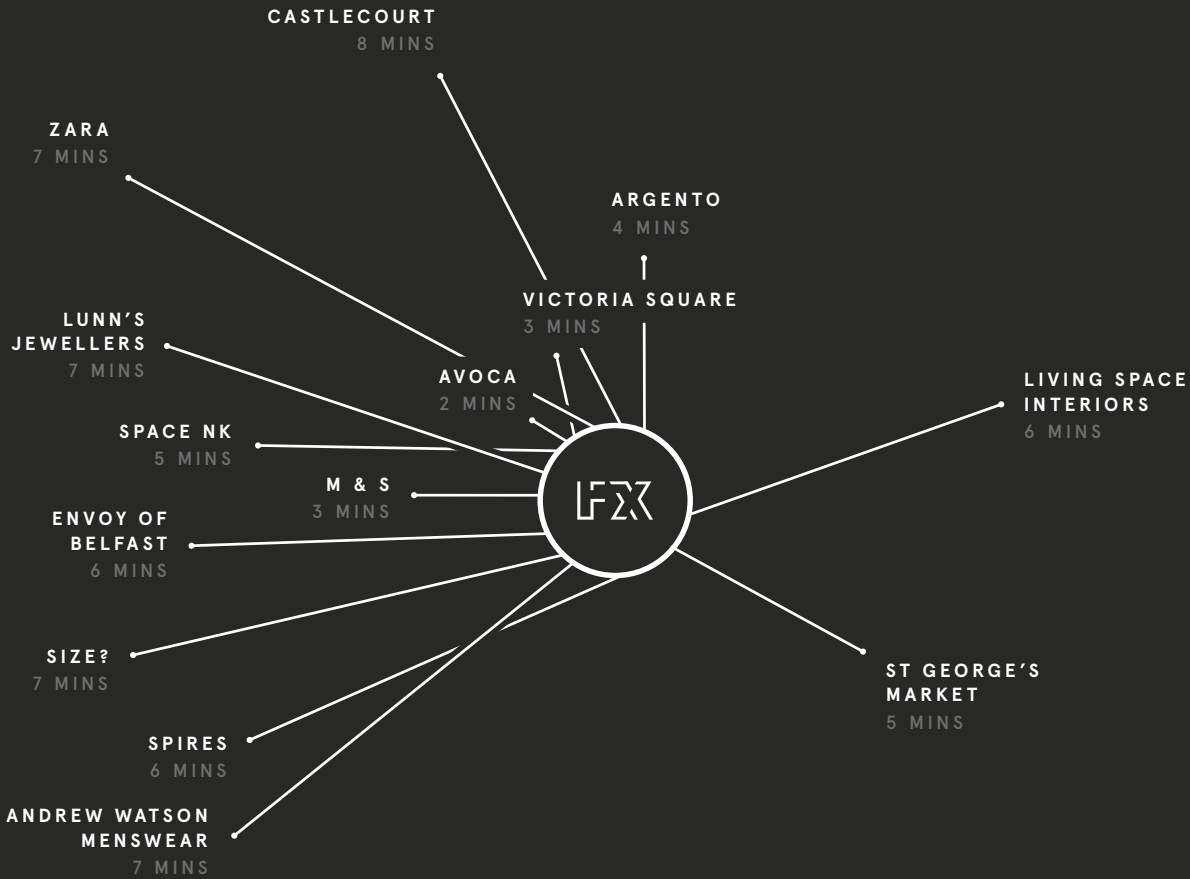


SHOPPING



SHOPPING

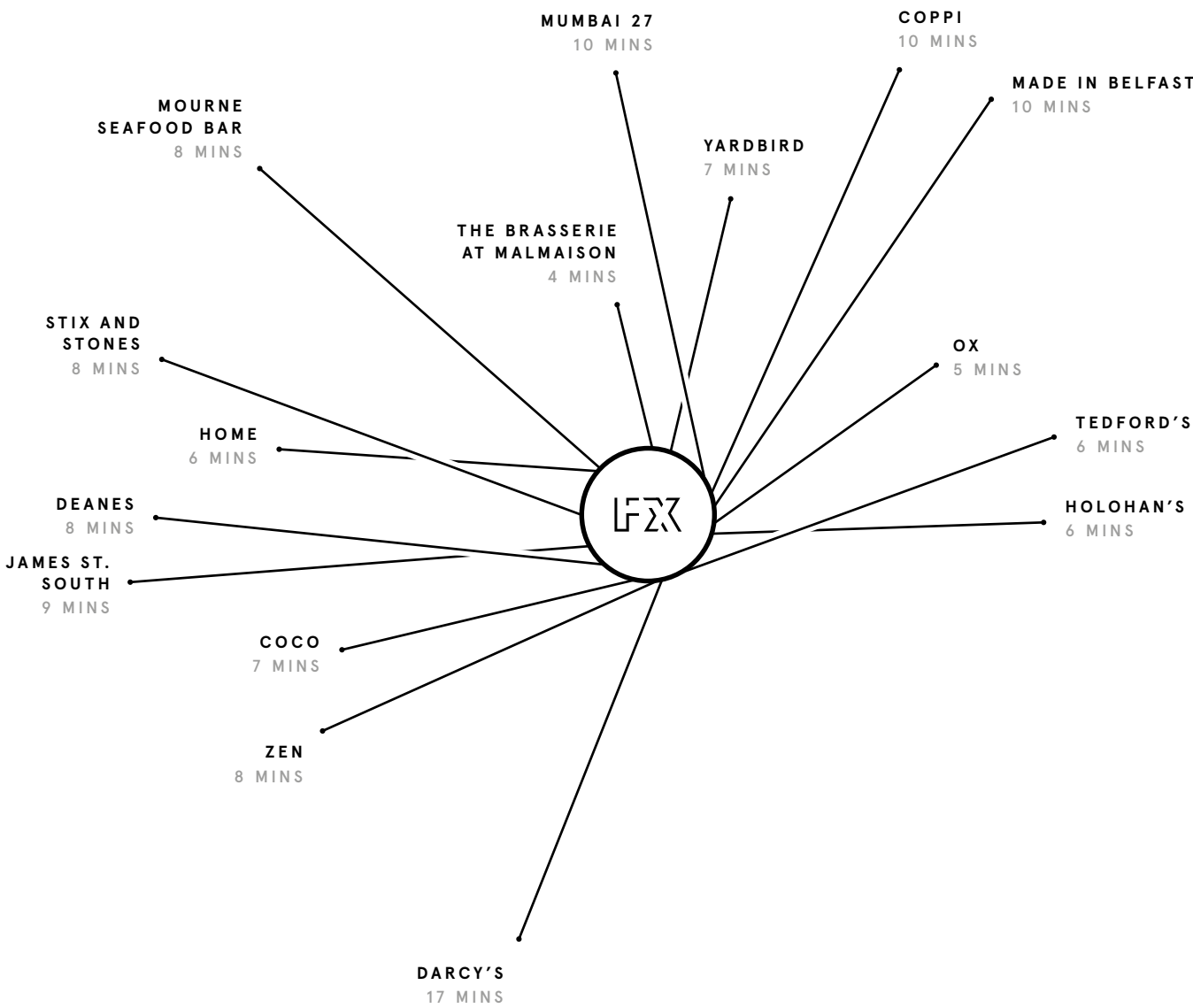
From local crafts and art to designer goods, there are hundreds of shops you recognise and a few you won't, all located within easy walking distance of your front door.





RESTAURANTS

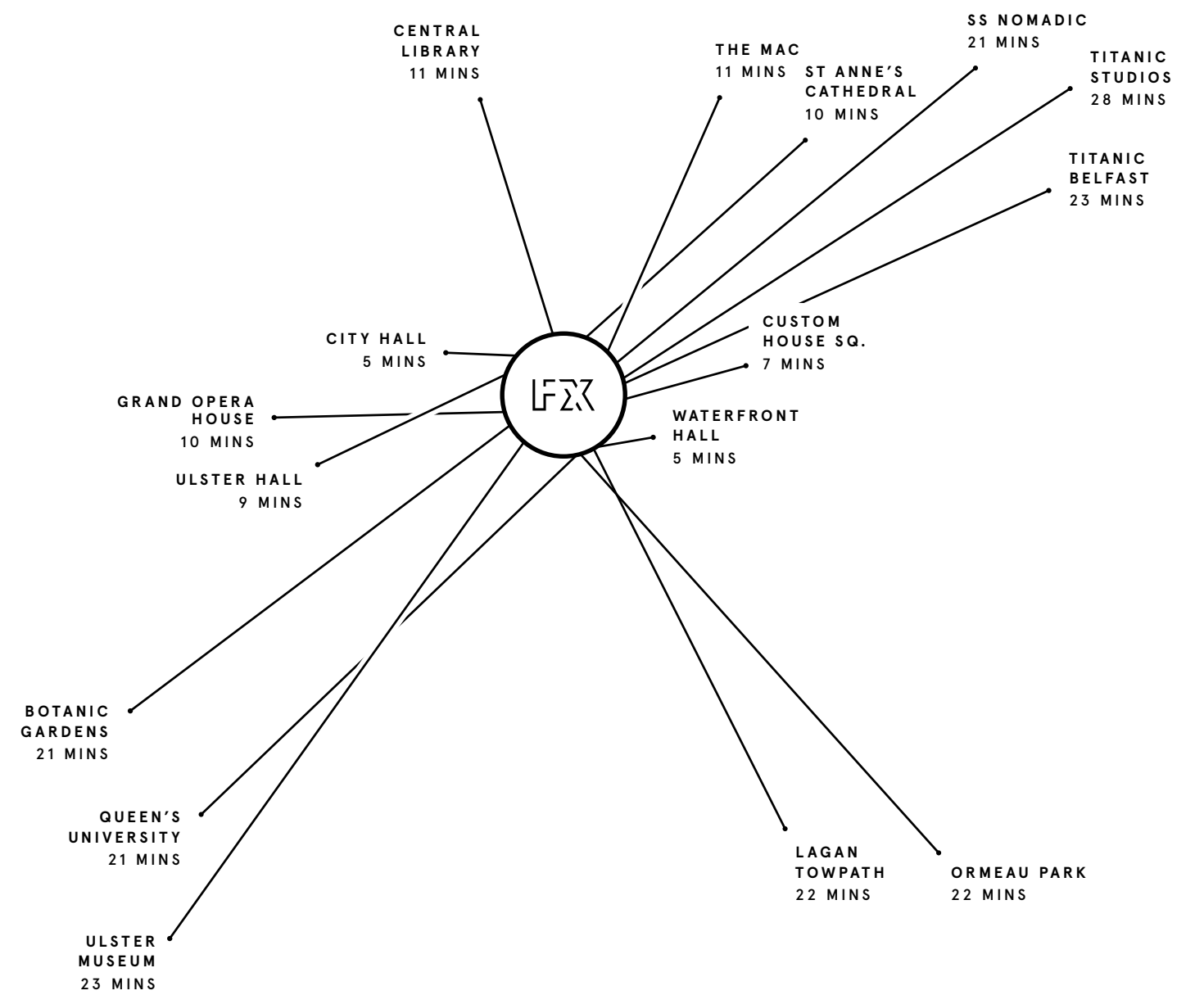
An impeccable approach to casual and fine dining has put this city on the map. Michelin stars, awards, and critical acclaim, whatever level of dining you aspire to, there's a seat for you here.





CULTURE

Theatre, art, comedy, street performance, music, history. With cultural events organised throughout the year and thousands of impromptu performances in pubs across the city centre, culture is always convenient in Belfast.



S P E C I F I C A T I O N S



KITCHEN

Rotpunkt contemporary German designer kitchen with soft close doors and drawers.

Stainless steel sink with Gessi 3 way hot tap including boiling function.

Siemens branded appliances including oven with combined microwave, dishwasher, washer dryer and hob.

Marble effect composite worktop.

Under unit LED strip lighting on wall cabinets.

CLOAKROOM

Hansgrohe Axor chrome tapware.

Unique Rexa Corian basin.

Wall hung w/c with soft close seat.

***Series 1 and Series 2 apartments.**

BATHROOM

Hansgrohe Axor Starck chrome tapware.

Unique Rexa Corian basin.

Wall hung w/c with soft close seat.

Unique Rexa Corian storage solution and mirror.

Black framed shower screen.

Bespoke tiled floating vanity shelf.

Tubes black heated towel radiators.

Marble-effect tiles for shower walls.

BEDROOM

Jesse fitted wardrobes.

DECORATION

Painted internal walls and ceilings.

Painted doors, architraves and skirtings.

Contemporary Buster + Punch ironmongery.

FLOORING

Engineered timber herringbone flooring throughout.

Luxurious insert carpet in bedroom.

Porcelain tile flooring in bathroom.

Timber herringbone flooring in cloakroom.

GLAZING

Aluminium framed double glazed windows.

FACILITIES

Private Residents' lounge equipped with a coffee machine, wine fridge, fire and wifi enabled projector for private cinema screenings or business meetings.

On-site concierge.

Residents' lobby with feature lighting and seating area.

Residents' gymnasium with range of equipment.

Architecturally designed communal rooftop garden

Secure covered cycle store.

Passenger lifts to service apartments.

Full building sprinkler system.

Parking available by arrangement with NCP multi storey car park opposite FX.

ELECTRICAL INSTALLATION

Multi-room wiring to living area and bedroom.

Energy efficient white downlighters throughout.

Secure video intercom system with direct link to concierge.

Comprehensive range of Buster + Punch electrical sockets and switches in a smoked bronze finish.

Buster + Punch 5 amp sockets in a smoked bronze finish to living area and bedroom.

Mains supply smoke and carbon monoxide detectors with battery back up.

HEATING

Phoenix Natural Gas heating.

Option to control heating remotely with smart phone application.

ENERGY EFFICIENCY

The apartments have been designed to be very efficient with their use of energy, with features including:

Energy efficient downlighters throughout.

Energy efficient appliances.

High levels of thermal insulation.

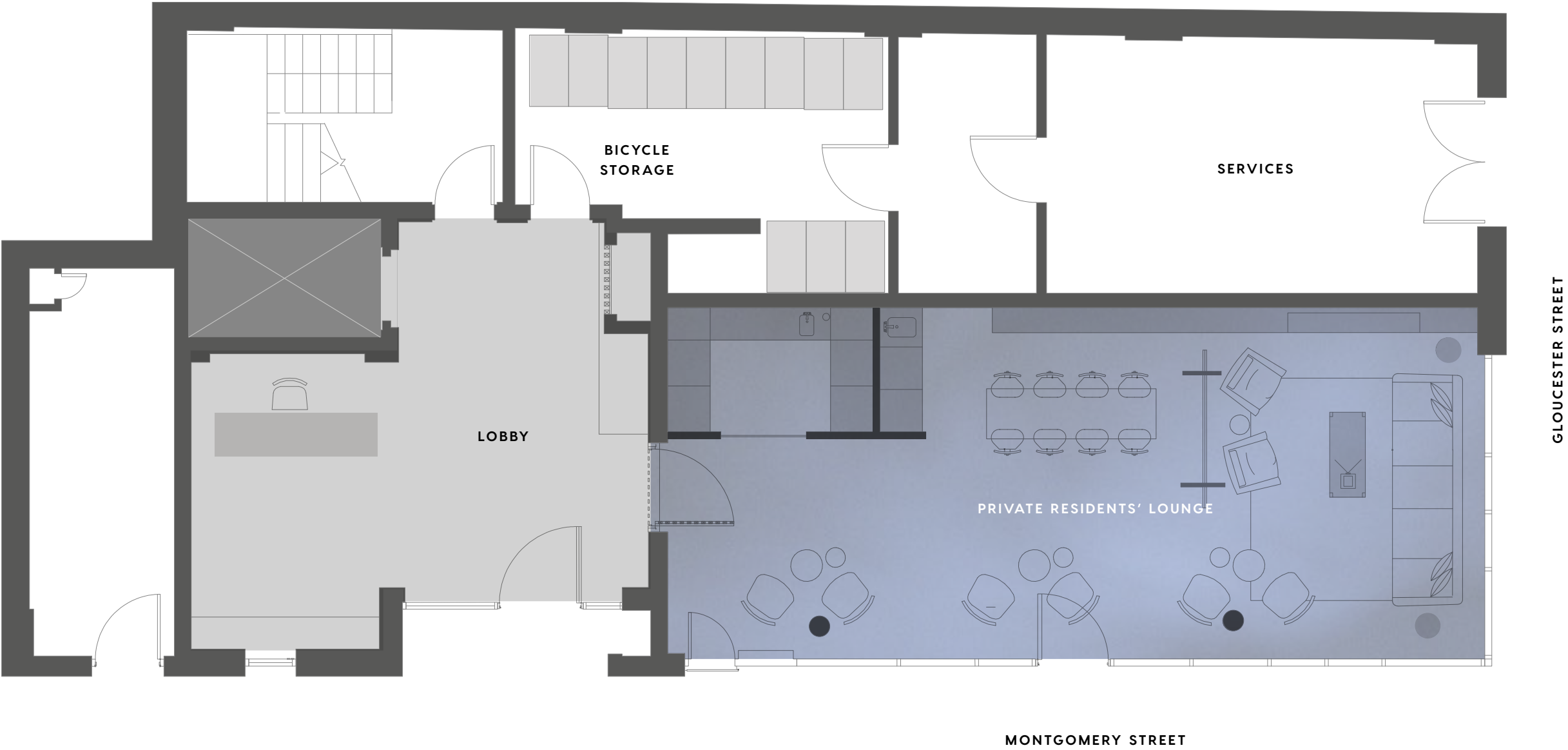
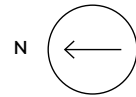
WARRANTY

10 year warranty provided.



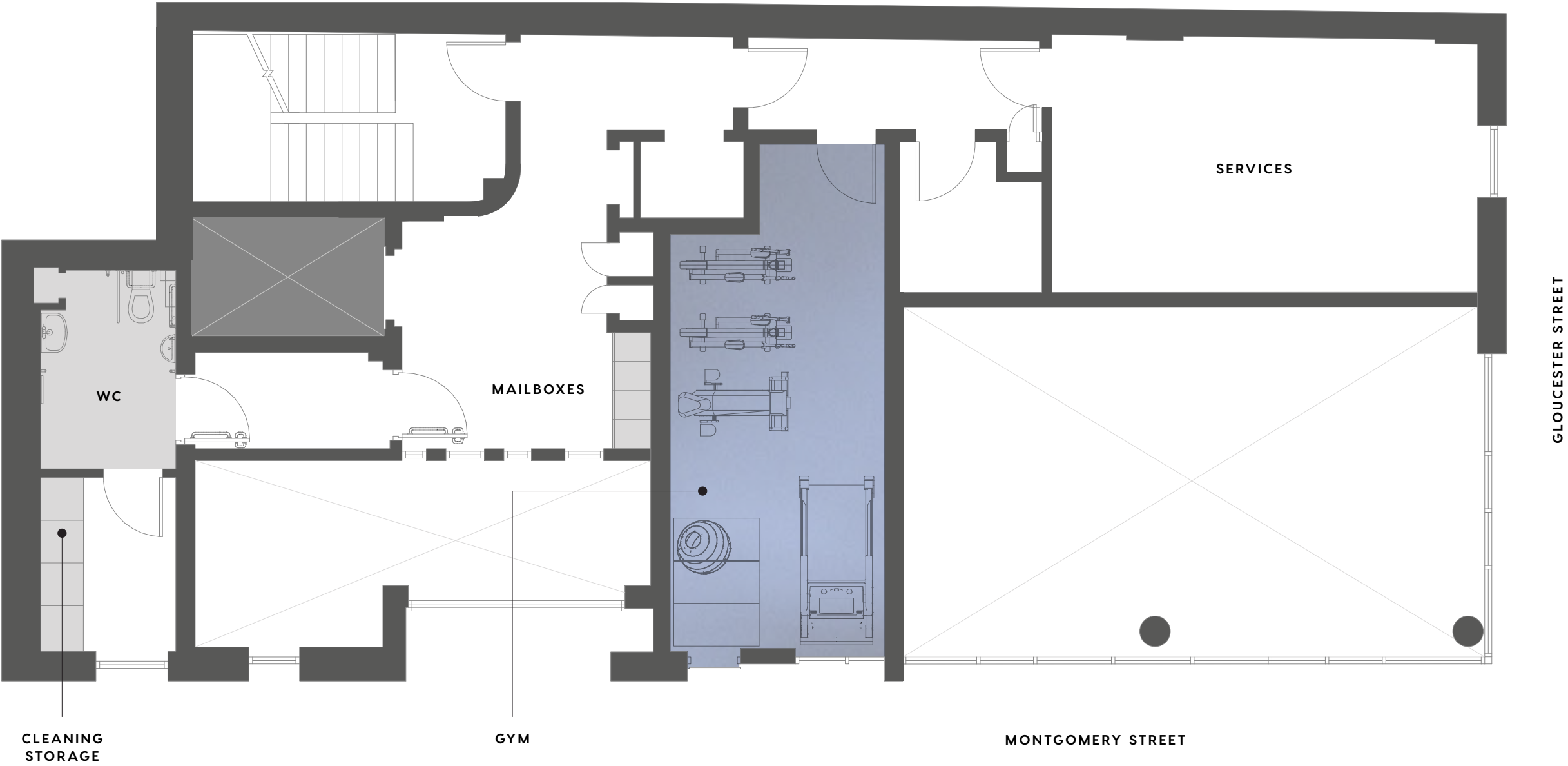
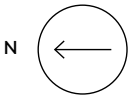
FLOOR
PLANS

GROUND FLOOR



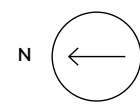
Maximum measurements shown.
Plans are not to scale and
dimensions are approximate.

FIRST FLOOR



Maximum measurements shown.
Plans are not to scale and
dimensions are approximate.

ROOF GARDEN

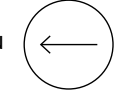


Maximum measurements shown.
Plans are not to scale and
dimensions are approximate.

2ND – 13TH FLOORS

FX SERIES 2

FX SERIES 3



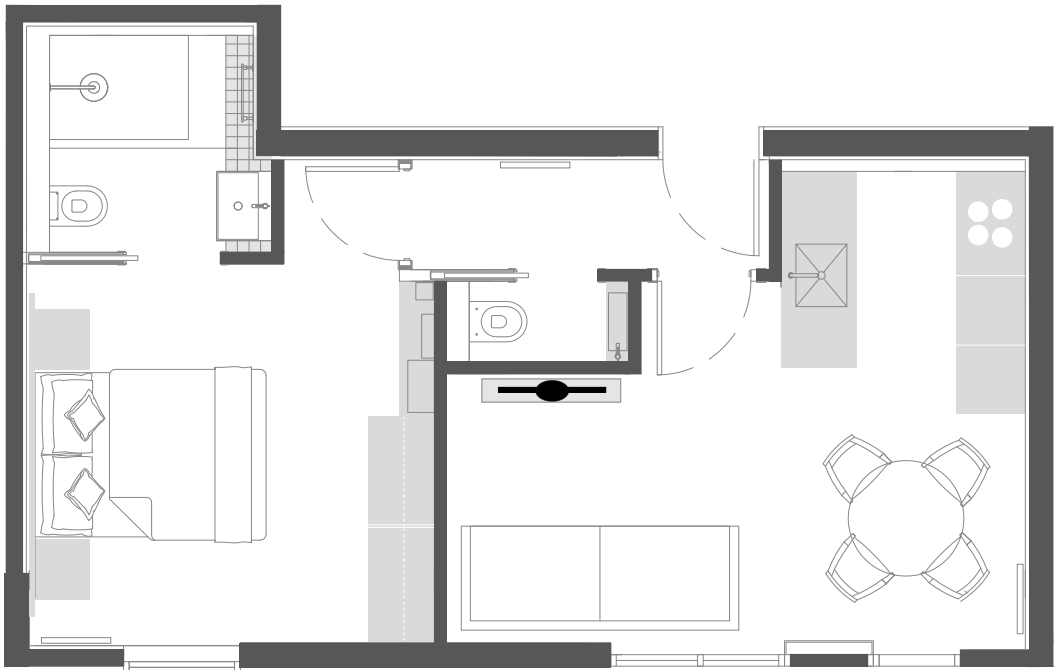
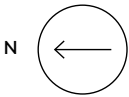
GLOUCESTER STREET

MONTGOMERY STREET

FX SERIES 1

Maximum measurements shown.
Plans are not to scale and
dimensions are approximate.

FX SERIES 1



MONTGOMERY STREET

FX SERIES 1
1 Bed

**Kitchen, Dining
and Living**
5m x 4.1m
16'5" x 13'6"

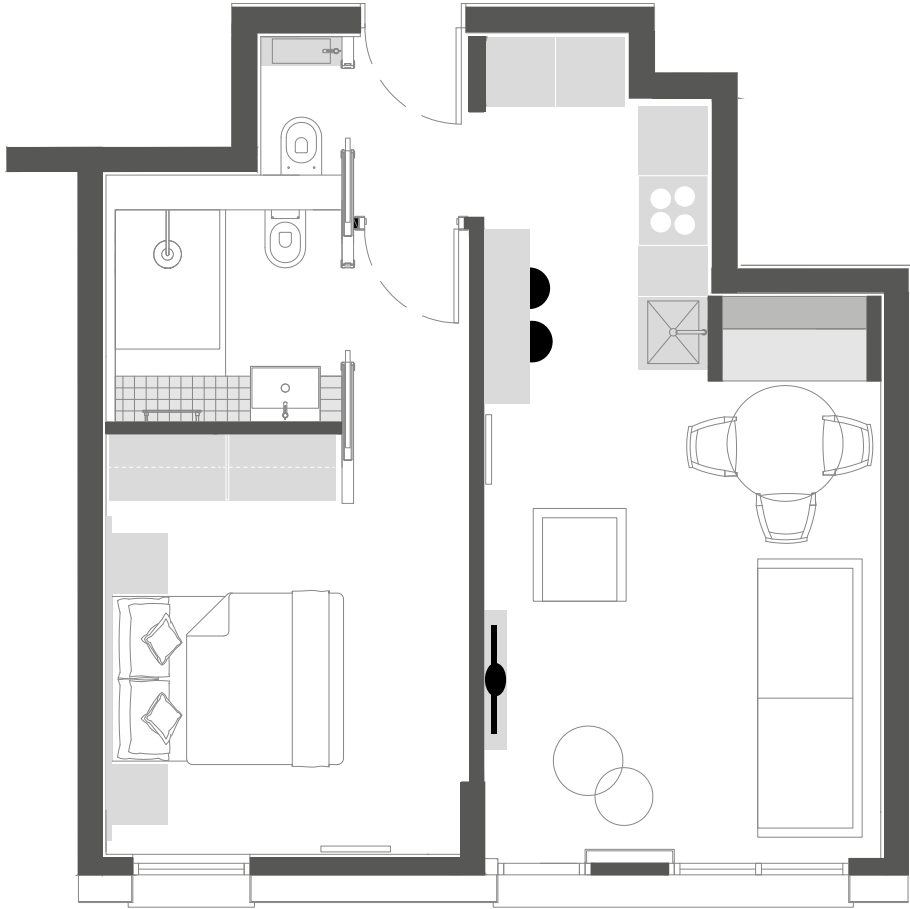
Bedroom
3.5m x 3.3m
11'6" x 10'11"

Bathroom
1.9m x 1.8m
6'2" x 5'10"

Maximum measurements shown.
Plans are not to scale and
dimensions are approximate.



FX SERIES 2



MONTGOMERY STREET

FX SERIES 2
1 Bed

**Kitchen, Dining
and Living**
7.1m x 3.4m
23'4" x 11'3"

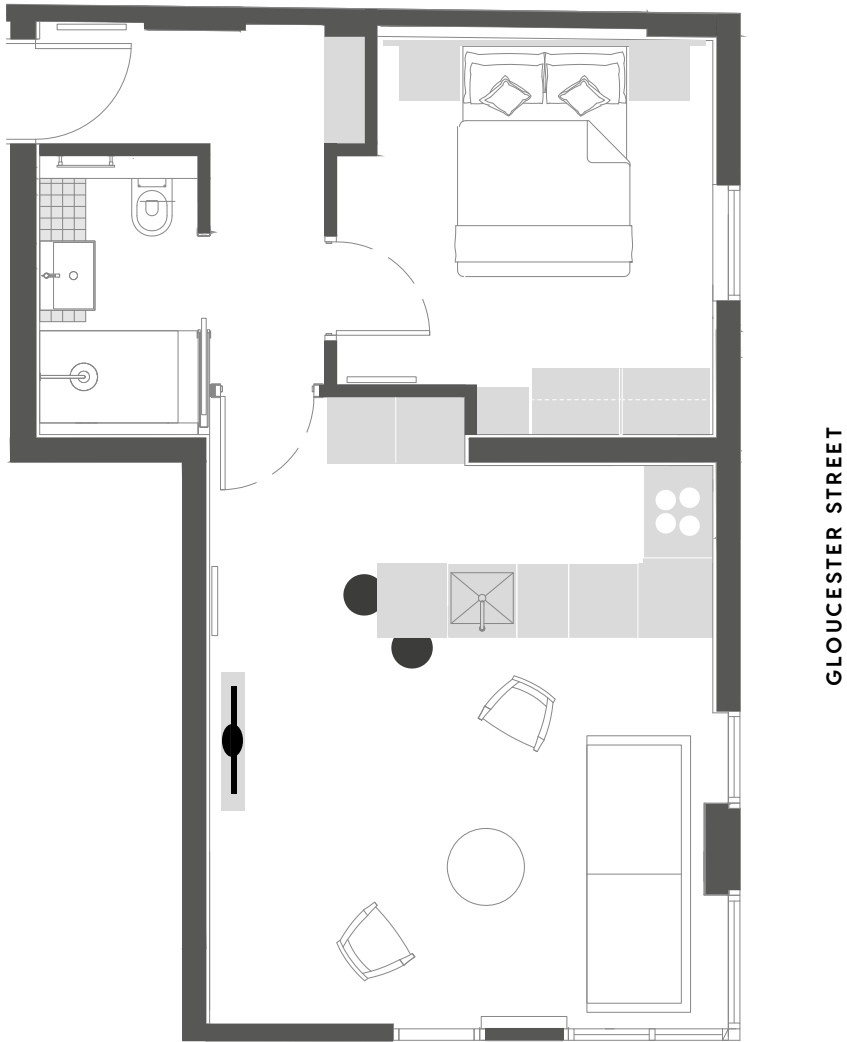
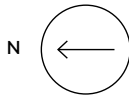
Bedroom
3.6m x 3.1m
11'10" x 10'2"

Bathroom
1.9m x 1.8m
6'3" x 5'11"

Maximum measurements shown.
Plans are not to scale and
dimensions are approximate.



FX SERIES 3



FX SERIES 3
1 Bed

**Kitchen, Dining
and Living**
4.9m x 4.3m
16'1" x 14'1"

Bedroom
3.4m x 3.3m
11'2" x 10'9"

Bathroom
2.3m x 1.4m
7'6" x 4'7"

Maximum measurements shown.
Plans are not to scale and
dimensions are approximate.



FX

Montgomery Street
Belfast BT1

fxbelfast.com



SELLING AGENTS

Simon Brien Residential

525 Lisburn Road
Belfast BT9 7GQ

(028) 9066 8888
southbelfast@simonbrien.com

simonbrien.com



DEVELOPMENT BY

**ALAN FRASER
HOMES OF DISTINCTION**
alanfraser.com

INTERIORS BY

DAY TRUE

ARCHITECTURE BY



LEGAL ADVISOR

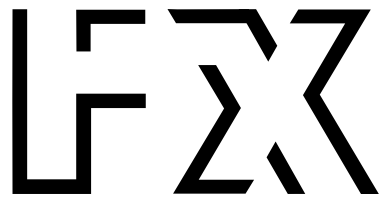
**CMG
CUNNINGHAM
DICKEY
SOLICITORS**

CONSTRUCTION

Mascott
Mascott Construction
Europe Ltd.

The Vendors and their Agents give notice that these particulars do not constitute any part of an offer or contract. None of the statements contained in these particulars are to be relied on as statements or representations of fact and intending purchasers must satisfy themselves by inspection or otherwise correctness of each of the statements contained in these particulars. Configurations of kitchens, bathrooms and exteriors etc., may be subject to alteration from those illustrated without prior notification. Purchasers must satisfy themselves as to current specification at time of booking. The Vendor does not make or give, and neither the Selling Agent, nor any person in their employment, has the authority to make or give any representation or warranty whatever in relation to this property. Artist's impression and photographs are for illustration purposes only. Plans are not to scale and all dimensions shown are approximate.





ONE BEDROOM LUXURY RESIDENCES
MONTGOMERY STREET BELFAST BT1



ACT 2

THEATRE OF VARIETIES
The story behind FX

AWAKE & HUNGRY
5 top Belfast brunch spots.

PALMARIA PALMATA
Belfast's snack from the sea.

ACT 2

ACT 2

SUPPORTING

01

EMPIRE THEATRE OF VARIETIES

Take a bow Belfast.

pg08

02

SWITCHBOARD ILLUSIONIST

Seeing Belfast in a new light.

pg12

03

SNAKE CHARMER

Her performance was totally off the scales.

pg14

04

AWAKE & HUNGRY

Brunch spots in Belfast worth waking up for.

pg16

05

A PINT AND SOME PALMARIA PALMATA PLEASE

Salty snacks Belfast style.

pg20

06

REST EASY

Sleeping in, in the city.

pg24



When we reminisce about the history of Belfast, the tall tales of the theatre always steal the show.

‘Empire Theatre of Varieties’ article pg08

Live the London lifestyle in Belfast.





LIVE THE LONDON LIFESTYLE.
In Belfast.



01

EMPIRE THEATRE OF VARIETIES

Take a bow Belfast



Inspired by the rich theatre history of Belfast, FX is taking centre stage in a new chapter of the story. Set on the very street where the bustling audiences spilled out of the Empire Theatre, FX is truly special.

When we reminisce about the history of Belfast, the tall tales of the theatre always steal the show. From the very first performance in 1736, right through to the early 1800's the theatre culture was at the heart and soul of the city. After this came a period of political unrest, leading to a decline in ticket sales which forced many theatres to close.



“FX is taking centre stage in a new chapter of Belfast’s story.”

In December 1894, things started to look up when The Empire Theatre of Varieties opened its doors in the old Victoria Square. The opening year was so successful that the theatre had to expand their grand hall to keep up with ticket demands. Over the next seventy years The Empire saw stars such as Charlie Chaplin, Harry Lauder, Kenn Dodd, Gertie Gitama and Belfast’s own Willie Ashcroft.

Surviving on tradition alone, the Empire Theatre stayed open until the 1960’s - just a few years after the television was invented and found its way into most people’s living rooms.

The passion of the performers and the owners was so strong, they managed to keep it open longer than any other theatre of a similar age.

“It’s hard to visualise what Victoria Square will look like without the Empire. When the little theatre is demolished serious faced businessmen and efficient shop girls will take the place of comedians and glamoirettes. In the modern 20th century store that is to replace it, we will be able to buy many things - but not the happiness the Empire sold to so many” (*Belfast Telegraph* 20 January 1961)



Before it found its current home, The Belfast Empire was located in the heart of the city. Every night audiences spilled out onto Montgomery Street, creating excitement and activity. It was special. FX

02

SWITCHBOARD ILLUSIONIST

Seeing Belfast in a new light

ILLUSIONIST

Large theatres hired switchboard controllers to light up the stage during each performance. The Empire Theatre hired a young man called Herbert who, in later years became known as the Switchboard Illusionist. Working his lighting magic backstage, he had the ability to both attract and distract the eye at the same time. In some instances, the lighting made the performers look so attractive on stage, the audience were often keen to meet them after the show - most were left disappointed.



03

SNAKE CHARMER

SNAKE CHARMER



*Her performance was totally
off the scales*

One of the main attractions to the Empire Theatre of Varieties was the annual performance of Hunter's Circus. The old ringmaster would carefully select performers from all over Europe, making sure each year was more weird and wonderful than the last. On his travels, he came across the mysterious Snake Charmer and invited her to join the show. He soon realised that her love for snakes went far beyond the stage as she was rarely seen without her favourite accessory - a three metre boa constrictor!

04

AWAKE & HUNGRY

*Brunch spots in Belfast
worth waking up for*





Breakfast might be the most important meal of the day, but is there anything more enjoyable than a weekend brunch? We think not. With pancake stacks, Mimosas, avocado on toast, Bloody Marys and eggs benedict on offer - here are five brunch spots in Belfast worth waking up for...

ESTABLISHED COFFEE

The perfect place for the coffee conscious, the healthy eaters and the indulgent elite to relax over a leisurely brunch.

ST GEORGE'S MARKET

Get a real taste of Belfast this Saturday with a trip to St George's Market. Enjoy a Belfast bap, a chocolate crepe or a full Irish as you soak up the magic of the market.

HARLEM CAFE

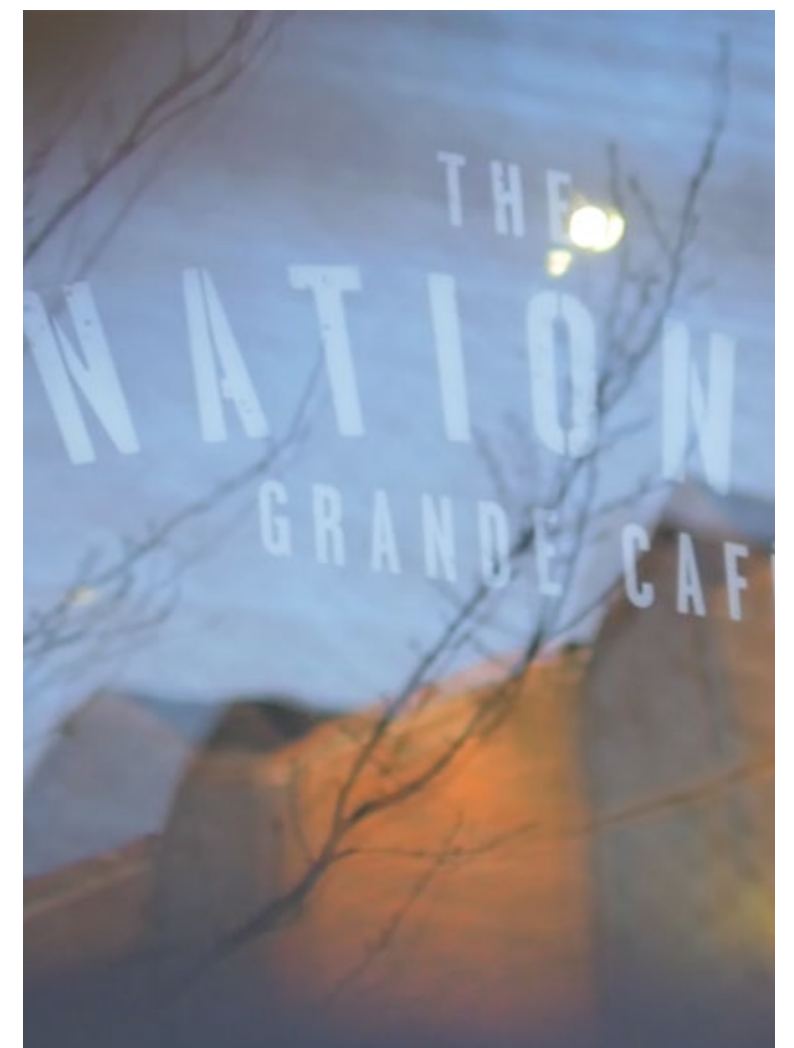
This art-filled space is cosy, eclectic and full of foodies. With delicious local food and an unrivalled atmosphere, it's the perfect place for a brunch time treat.

BERT'S JAZZ BAR

Jazz up your weekend with a brunch date at Bert's. It doesn't matter how you like your eggs in the morning because they serve them all - the price includes a glass of Bloody Mary or Buck's Fizz.

NATIONAL CAFE

Forget the roast dinner this Sunday and go for a boozy brunch instead. With everything from French toast to Eggs Benedict, it's a great experience for first time brunchers.



05

A PINT AND SOME PALMARIA PALMATA PLEASE

Salty snacks Belfast style





Take a deep dive into the world of dulse.

The tide goes out. Then the dulse gatherers row or wade to the area where high and low tides meet, their eyes searching for the purple leaves dancing underneath. The best bits come away easily in their hands - it gives itself readily to those who make the effort to appreciate it. Little fish dart between the brown leaves of seaweed, avoiding the hands of the gatherer, trying not to get caught as the fine leathery strands are pulled from the water.

Summer sunlight is the only ingredient needed to transform it into the end product. The dulse is laid out on clean cotton sheets in the sunshine. It has to be turned, so this

delicate plant doesn't get burned to a crisp. You know it's done when the salt crystallises on the still soft, purple leaves. Then it's put in a bag and sold as a snack in fruit and veg shops, garages and pubs. This is the harvest of the coastline - from Larne right up to the Giant's Causeway. Rich in vitamins, minerals, iodine, it is Ulster's super food. And boy does it go brilliantly with a pint of the good stuff.

You can order dulse as a bar snack in Belfast's Duke of York or The Harp Bar. Or you can buy some, fry it up and give it to your vegan friends as an alternative to bacon...

06

REST EASY

Sleeping in, in the city

REST EASY



Resting easy at the heart of a busy city is surprisingly simple. It comes from knowing you're at the centre of everything, without the worry or stress of having to travel there in the morning and leave again after work. It comes from knowing that you're never in a rush because you're always close by.

Back when Belfast was just beginning to take shape, resting was not as straightforward as it is today. Our ancestors didn't sleep for eight hours straight; instead they would sleep in two shorter spells over a twelve-hour period. The first - sleep one - was three to four hours long. Then people got up, read, played or prayed and some would even visit their neighbours. The second - sleep two - lasted until it was time to get up.

This once normal routine started to disappear in the late 17th Century as the fashion of sleeping through the night started to spread among the urban upper classes. This tale of two sleeps remained hidden for close to a century, until Roger Ekirch uncovered it in 2001 and supported it with evidence found in literature, court documents and personal diaries.

"He knew this, even in the horror with which he started from his first sleep, and threw up the window to dispel it by the presence of some object, beyond the room, which had not been, as it were, the witness of his dream." *Barnaby Rudge* by Charles Dickens

So, next time you find yourself tossing and turning at 3AM, take a minute to think about those who did this every night. Then turn over and take comfort from the fact that like *The Godfather Part II*, sleep two might be even better.

BELFAST COOKERY SCHOOL

Try your hand and test your tastebuds at the Belfast Cookery School.

WEEKLY CLASSES.
REQUIRES BOOKING.

belfastcookeryschool.com

EMPIRE COMEDY CLUB

Midweek laughs from top acts on the UK and international comedy circuit.

WEEKLY EVENT.

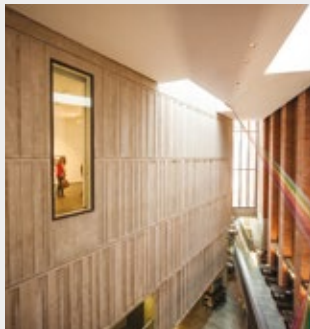
thebelfastempire.com

OH YEAH CENTRE

A former whiskey warehouse, the 'OY Centre' is an eclectic music and performance venue.

CHECK WEBSITE FOR
EVENT LISTINGS.

ohyeahbelfast.com



THE MAC

Belfast's coolest art gallery and theatre which hosts regular events and workshops.

OPEN DAILY.

themaclive.com



THE DIRTY ONION

Bodhrán lessons, Irish language and live music. There's something happening every night of the week at The Dirty Onion.

OPEN DAILY.

CHECK WEBSITE FOR
EVENT LISTINGS.

thedirtyonion.com

QFT

Established in 1968, QFT, an independent, intimate cinema, shows mainstream and indie movies and hosts workshops and event nights.

CHECK WEBSITE FOR
EVENT LISTINGS.

queensfilmtheatre.com

THE BLACK BOX

An alternative smörgåsbord of music, theatre, comedy, film, visual arts, cabaret, science and literature.

CHECK WEBSITE FOR
EVENT LISTINGS.

blackboxbelfast.com



ST. GEORGE'S MARKET

Built in the 19th Century, St. George's Market holds the best variety of food, drink, crafts and other goods that Belfast has to offer.

WEEKEND MARKET.

belfastcity.gov.uk

REVOLUCION DE CUBA

For latin-inspired cuisine, fresh tapas, signature cocktails and Cuban nightlife - Revolución de Cuba is the place to be.

[revoluciondecuba.com/
bar/belfast](http://revoluciondecuba.com/bar/belfast)



BELSONIC

A week long outdoor music festival. Belsonic brings to Belfast some of the biggest international music acts. Previous highlights have included Florence and the Machine, Emeli Sande and Queens of the Stoneage.

LATE SUMMER.

belsonic.com

BELFAST MELA

International music, dance, food and visual arts - a banquet of culture for the whole family.

SUMMER.

artsetka.org.uk

BELFAST FILM FESTIVAL

Experience the best new, short and classic films in various cultural locations around the city.

SPRING/SUMMER.

belfastfilmfestival.org

ULSTER BANK INTERNATIONAL ARTS FESTIVAL

Artists and audiences meet in a diverse and action packed programme spread over 3 weeks.

AUTUMN.

belfastinternationalartsfestival.com



culturenightbelfast.com

BELFAST FASHIONWEEK

Ireland's leading fashion event featuring cutting edge styles from the biggest names.

SPRING/AUTUMN.

belfastfashionweek.com

CATHEDRAL QUARTER ARTS FESTIVAL

Brush off those winter blues with music, laughter and performances in the Cathedral Quarter.

WINTER.

cqaf.com



FESTIVAL OF COLOURS

The largest contemporary cultural celebration of the Indian Holi festival in Ireland.

SPRING.

artsetka.org.uk

CULTURE NIGHT

Soak up and celebrate Belfast's best cultural celebration. All events are free and with over 50,000 people visiting the Cathedral Quarter, this night is not to be missed.

SEPTEMBER.

culturenightbelfast.com

CHRISTMAS CONTINENTAL MARKET

Gifts, music, food and atmosphere fill the City Hall gardens with some extra Christmas spirit.

NOVEMBER/DECEMBER.

